



Royal College of General Practitioners

External Survey of Windows, Roof Leadwork & Rain Water Goods

REPORT OF FINDINGS

Prepared by:

Avalon Abseiling Limited

Avalon House

45 Tallon Road

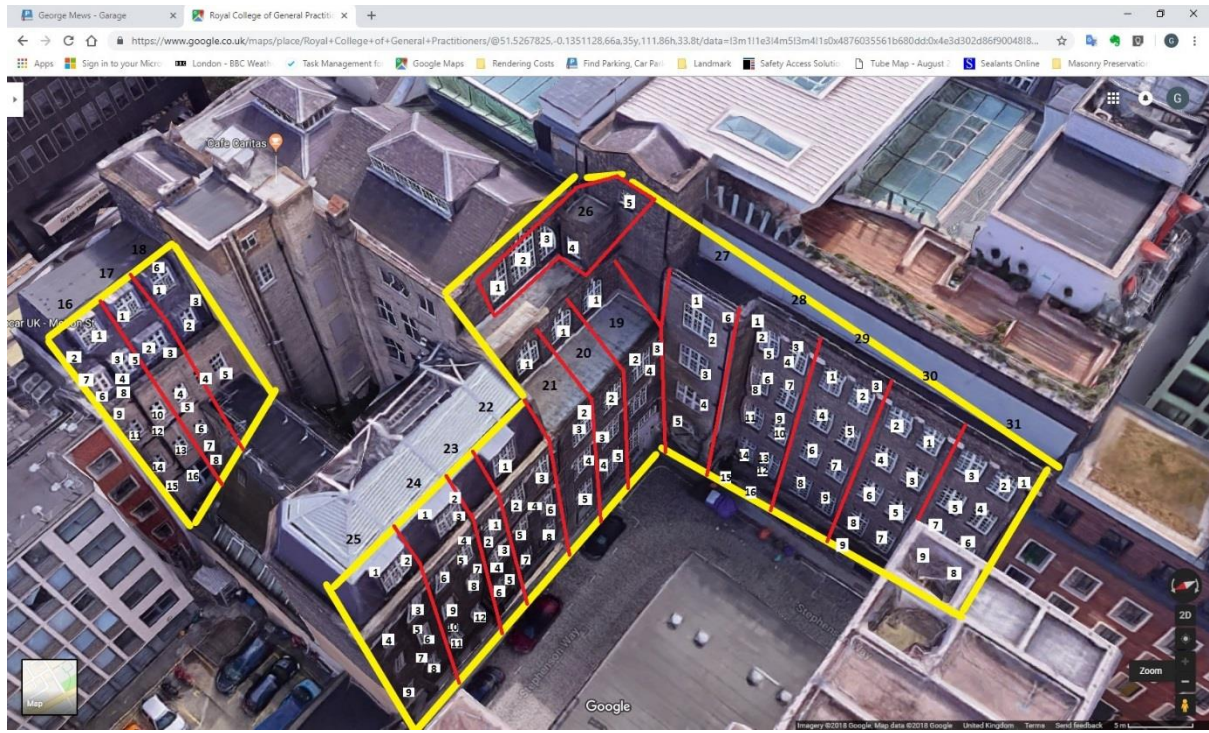
Hutton, Brentwood

Essex, CM13 1TG

SPLIT REPORT 2 of 4

PAGES 79 - 103

REAR ELEVATION 28TH OF FEBRUARY



DROP 19

PICTURE	DAMAGE DESCRIPTION
1	Flaking paint, weathered/rotten timber, missing putty
2	Missing pointing, movement of bricks
3	Weathered paint, metal window overall condition
4	Weathered/flaking paint, cracks in putty



Drop 19 Picture 1



Drop 19 Picture 2



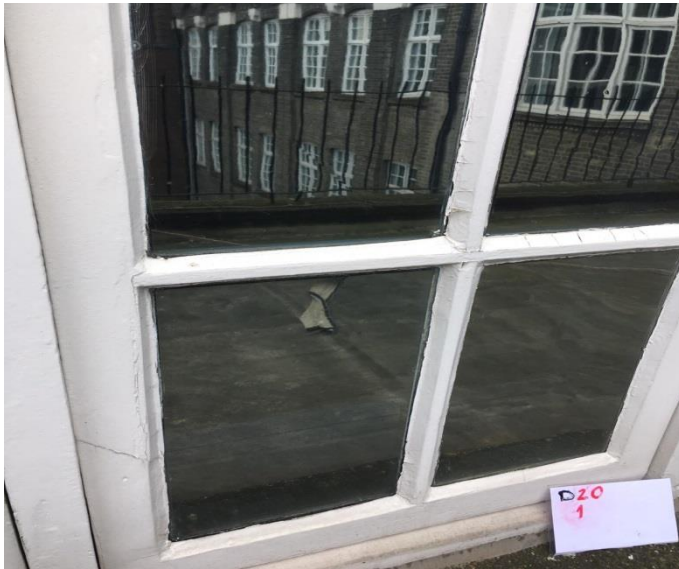
Drop 19 Picture 3



Drop 19 Picture 4

DROP 20

PICTURE	DAMAGE DESCRIPTION
1	Weathered paint, cracked putty
2	Weathered/flaking paint, cracked putty
3	Weathered/flaking paint, cracked putty
4	Damaged/weathered paint
5	Damaged timber



Drop 20 Picture 1



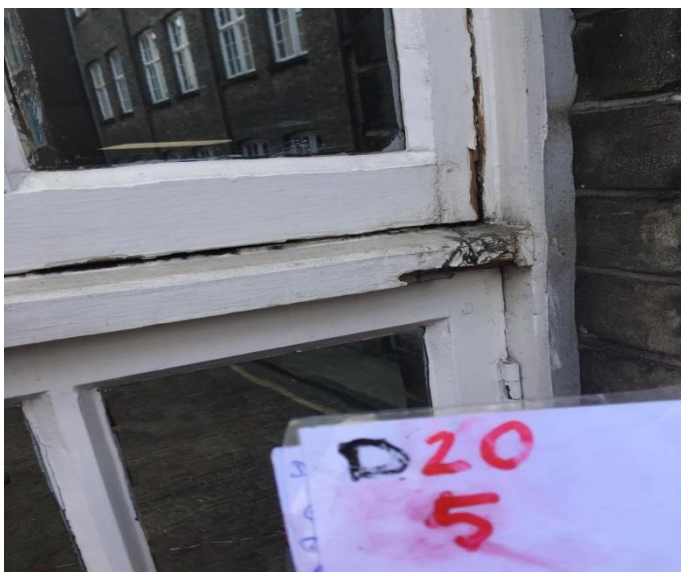
Drop 20 Picture 2



Drop 20 Picture 3



Drop 20 Picture 4



Drop 20 Picture 5

DROP 21

PICTURE	DAMAGE DESCRIPTION
1	Flaking/weathered paint, cracked putty
2	Loose brickwork above window
3	Weathered/flaking paint
4	Weathered/flaking paint, cracked putty
5	Weathered/flaking paint, cracked putty



Drop 21 Picture 1



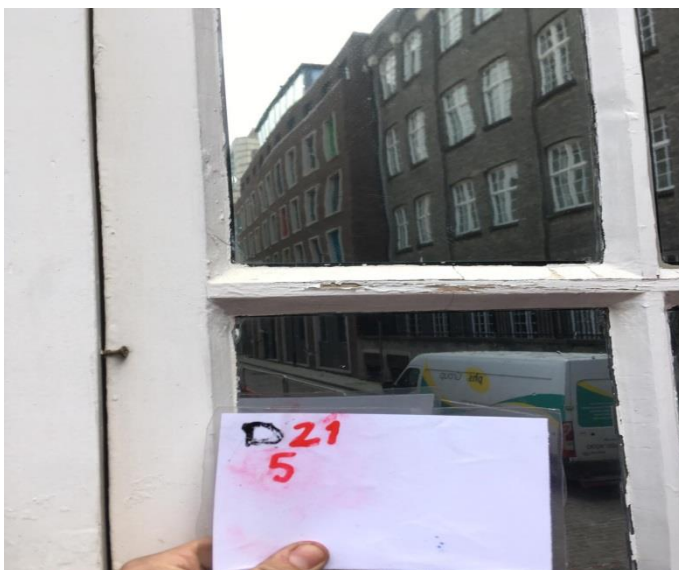
Drop 21 Picture 2



Drop 21 Picture 3



Drop 21 Picture 4



Drop 21 Picture 5

DROP 22

PICTURE	DAMAGE DESCRIPTION
1	Flaking paint, missing putty, damaged sill
2	Weathered/flaking paint
3	Weathered/flaking paint, minor damage
4	Flaking paint on pipe
5	Flaking paint, minor damage
6	Weathered paint
7	Minor damage, missing putty, flaking paint
8	Weathered/flaking paint



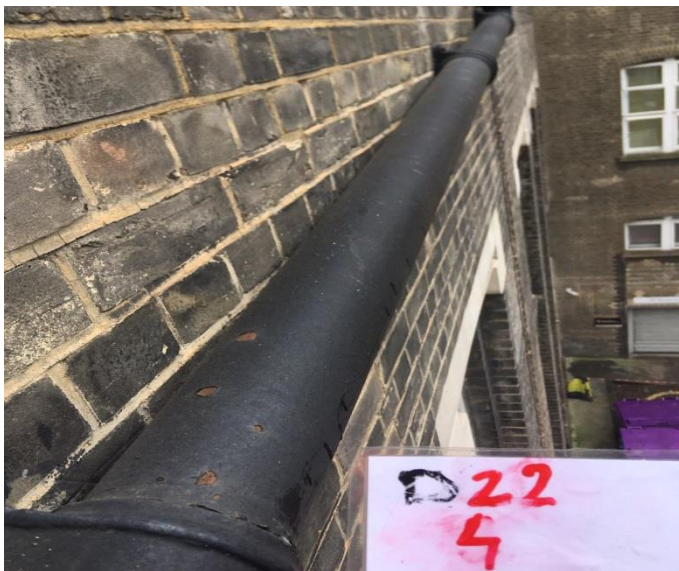
Drop 22 Picture 1



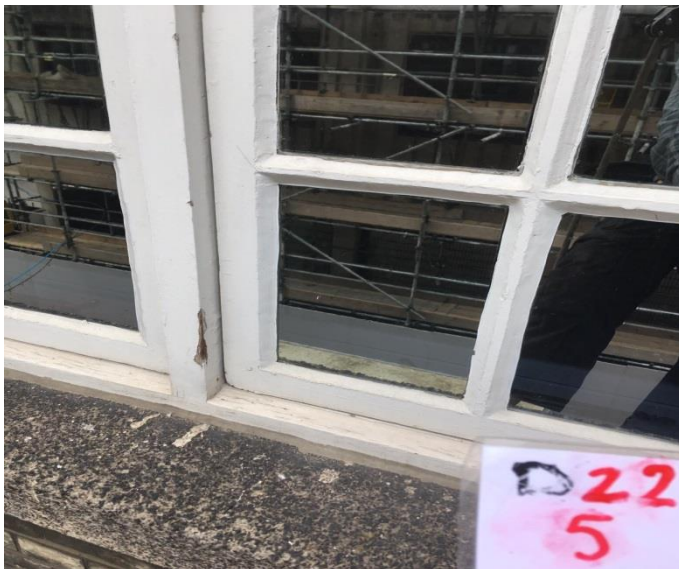
Drop 22 Picture 2



Drop 22 Picture 3



Drop 22 Picture 4



Drop 22 Picture 5



Drop 22 Picture 6



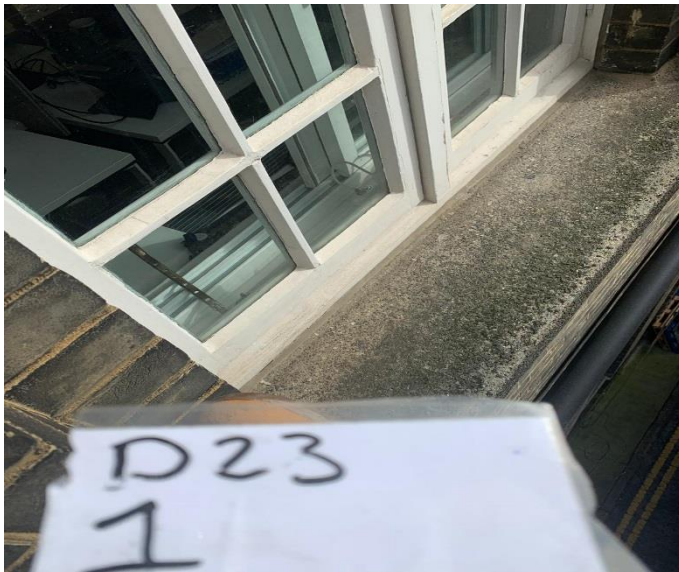
Drop 22 Picture 7



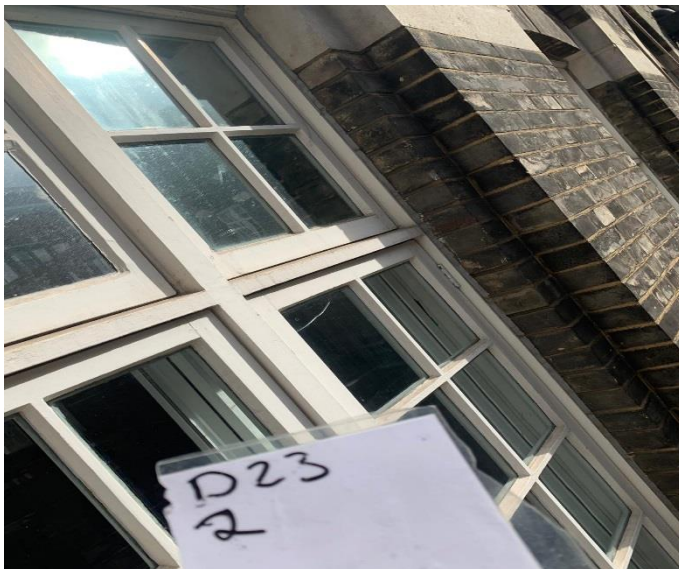
Drop 22 Picture 8

DROP 23

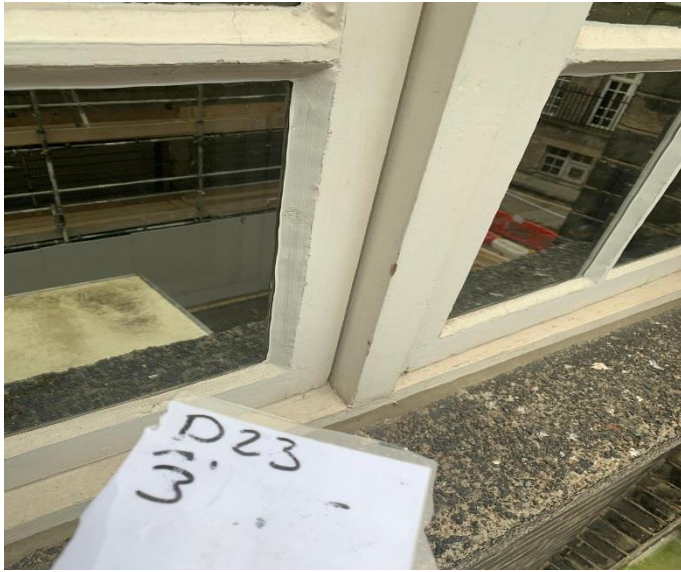
PICTURE	DAMAGE DESCRIPTION
1	Flaking paint
2	Cracked glass
3	Flaking paint
4	Flaking paint
5	Flaking paint
6	Cracked putty, flaking paint
	Hopper missing wire balloon



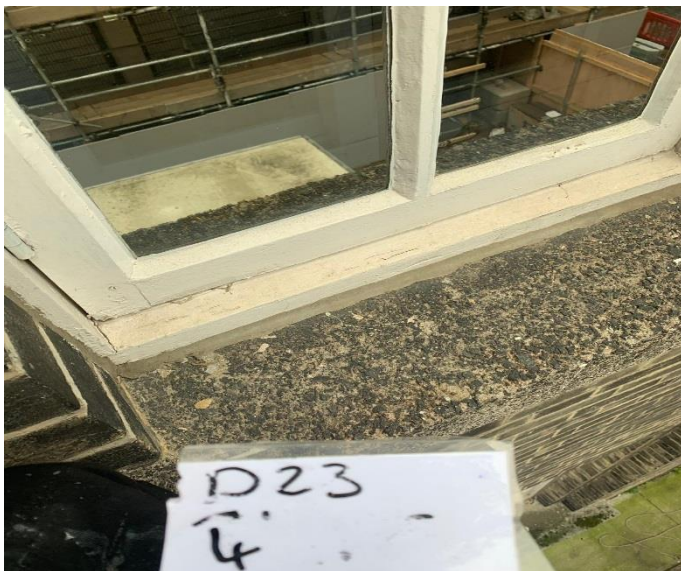
Drop 23 Picture 1



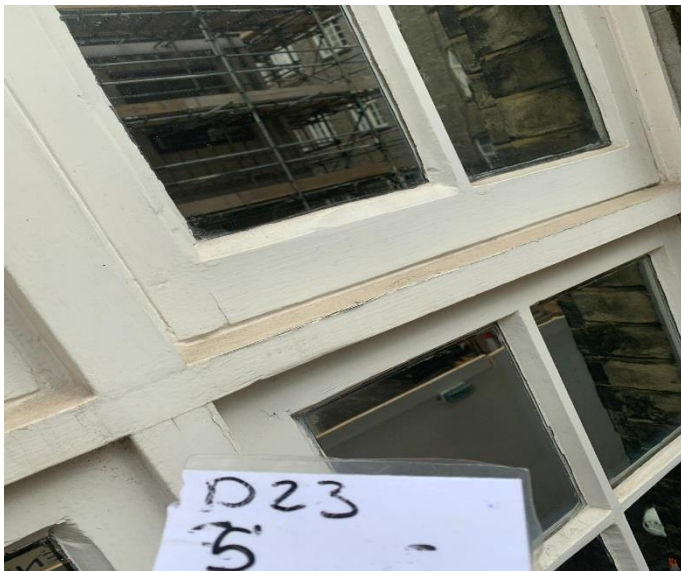
Drop 23 Picture 2



Drop 23 Picture 3



Drop 23 Picture 4



Drop 23 Picture 5



Drop 23 Picture 6



Drop 23 Hopper

DROP 24

PICTURE	DAMAGE DESCRIPTION
1	Flaking paint, damaged frame/sill, rotten timber, cracked putty
2	Overall condition
3	Cracked sill, flaking paint, cracked putty
4	Flaking paint
5	Cracked putty
6	Flaking paint, cracked putty
7	Badly damaged brick
8	Flaking paint
9	Flaking paint, cracked mastic
10	Cracked mastic
11	Flaking paint, cracked putty
12	Flaking paint, cracked putty



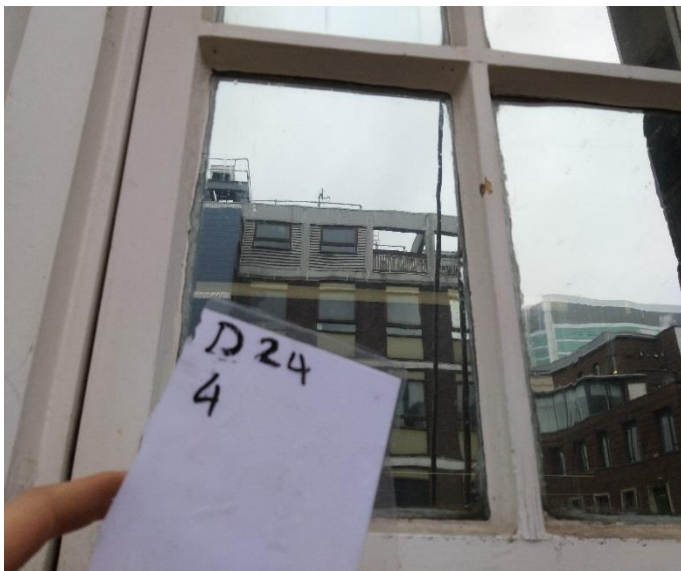
Drop 24 Picture 1



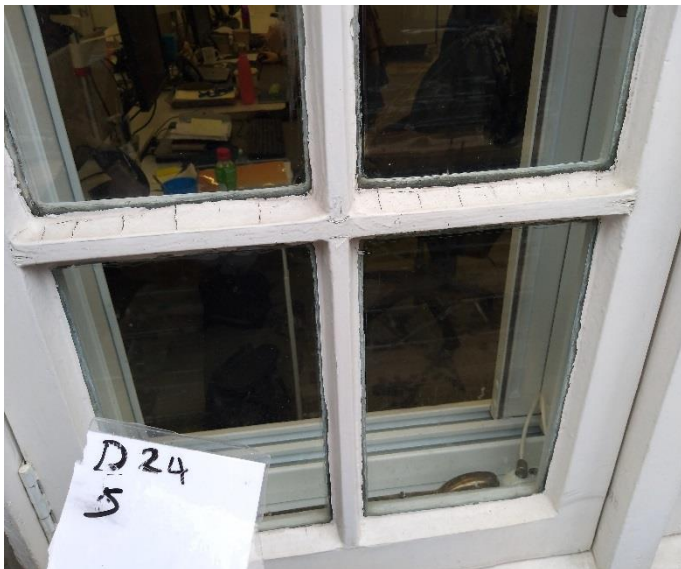
Drop 24 Picture 2



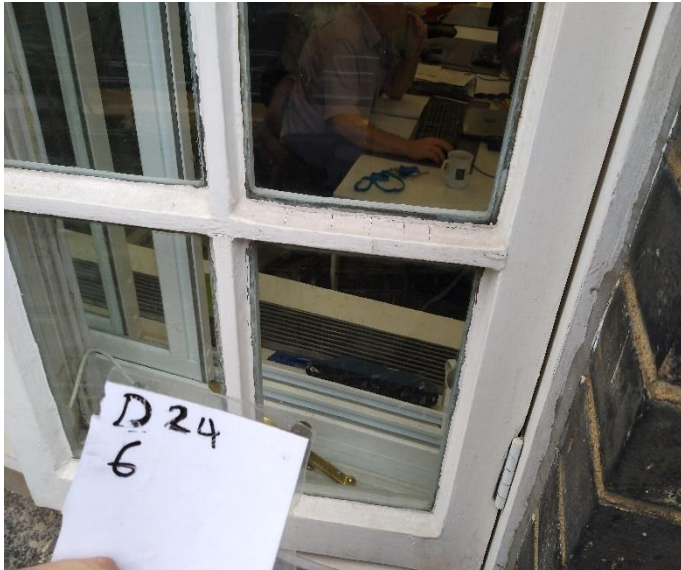
Drop 24 Picture 3



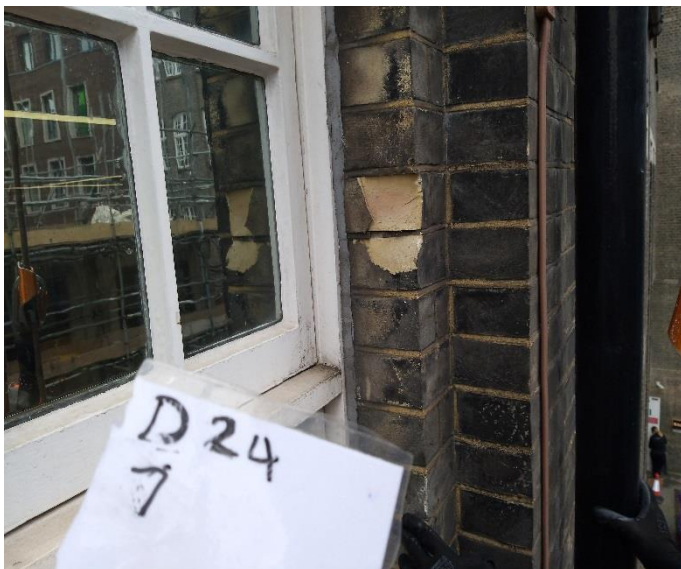
Drop 24 Picture 4



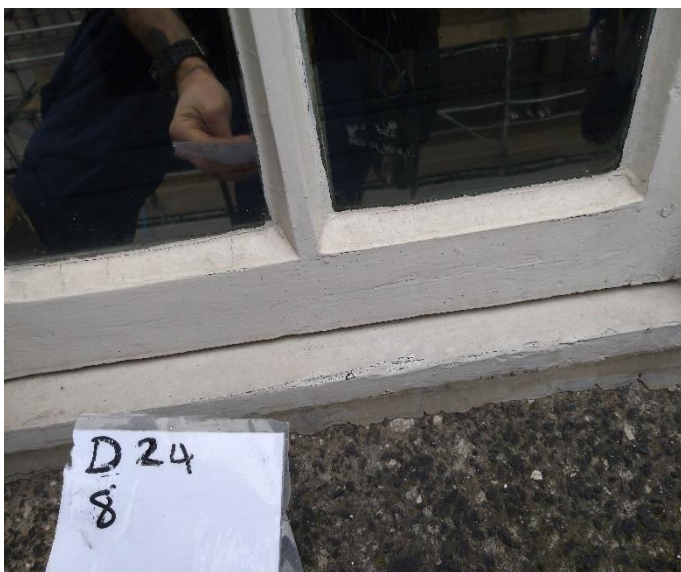
Drop 24 Picture 5



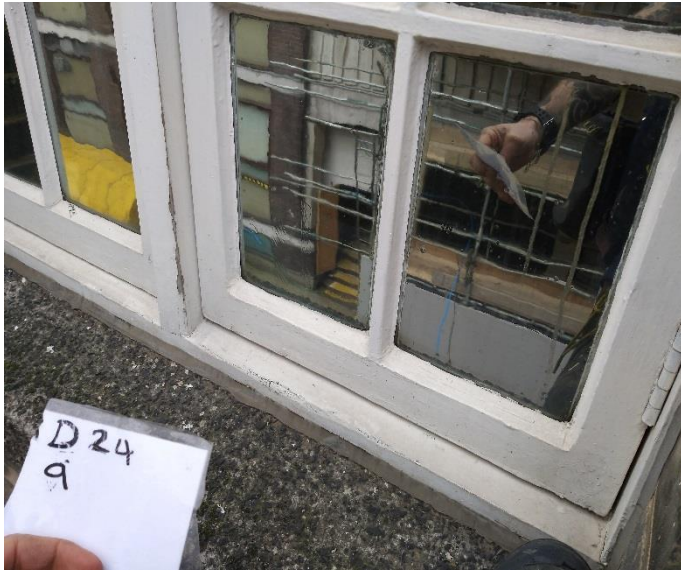
Drop 24 Picture 6



Drop 24 Picture 7



Drop 24 Picture 8



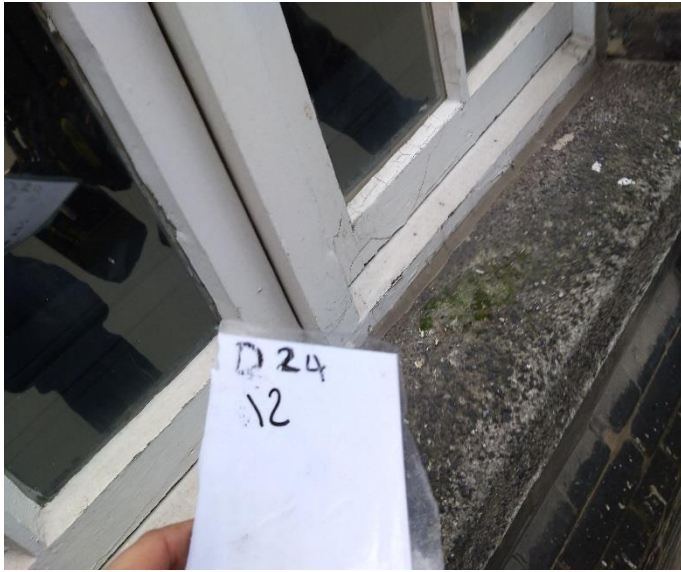
Drop 24 Picture 9



Drop 24 Picture 10



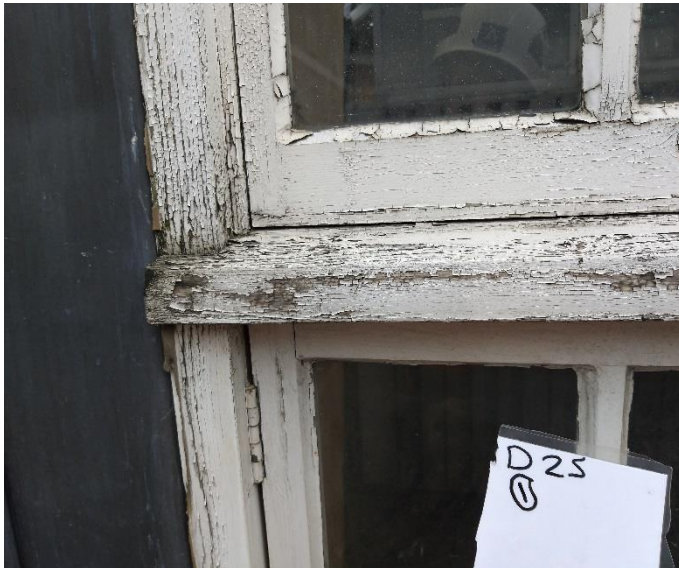
Drop 24 Picture 11



Drop 24 Picture 12

DROP 25

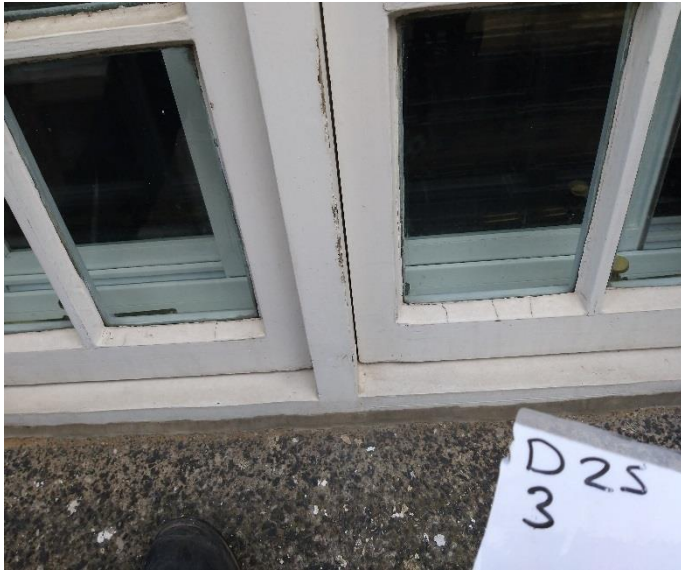
PICTURE	DAMAGE DESCRIPTION
1	Flaking paint, weathered timber, missing mastic, cracked putty, rotten timber
2	Overall condition
3	Putty cracked, flaking paint
4	Putty cracked
5	Flaking paint
6	Cracked putty, flaking paint
7	Cracked mastic, flaking paint
8	Cracked mastic, flaking paint
9	Cracked putty, flaking paint



Drop 25 Picture 1



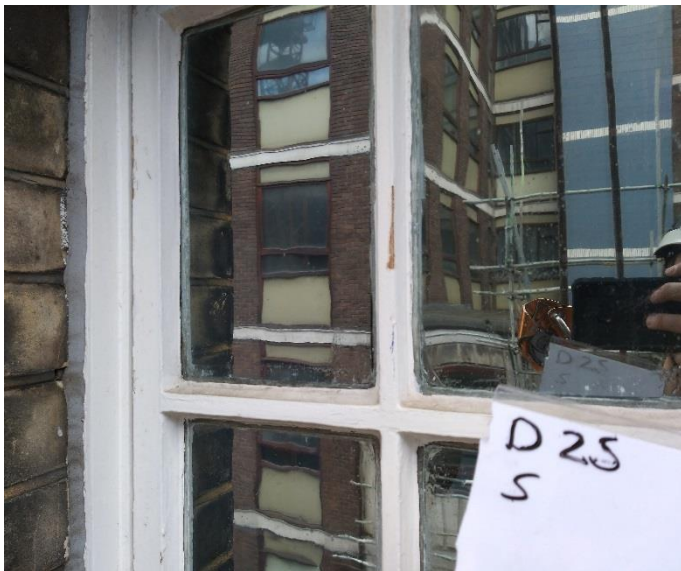
Drop 25 Picture 2



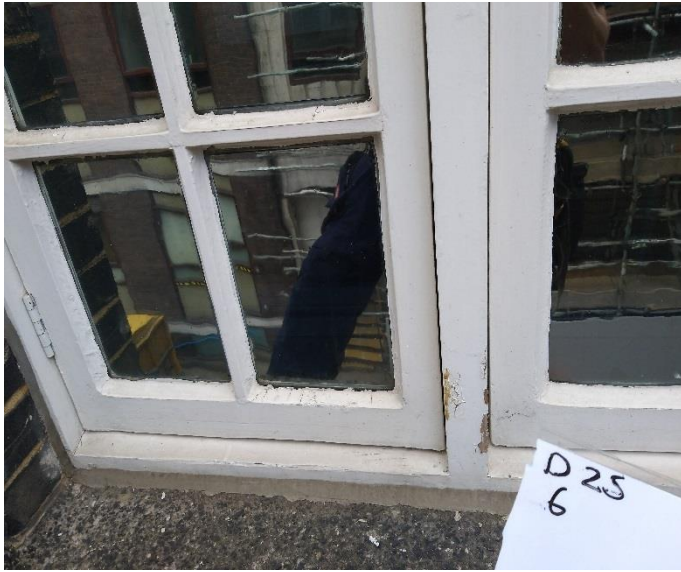
Drop 25 Picture 3



Drop 25 Picture 4



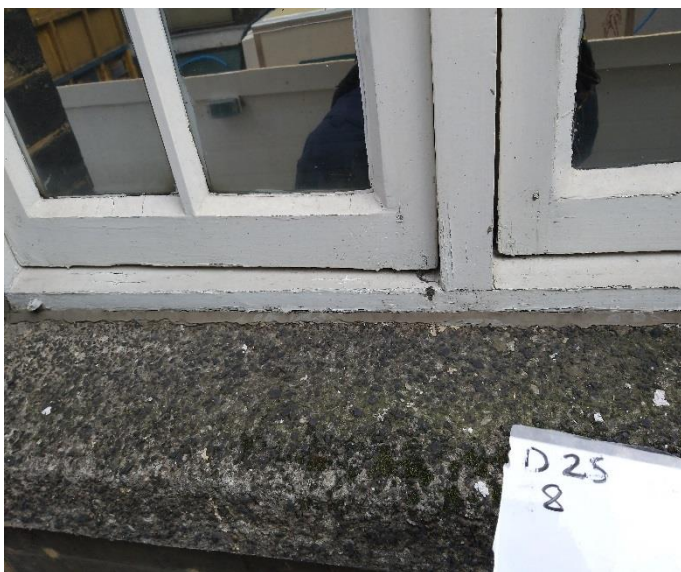
Drop 25 Picture 5



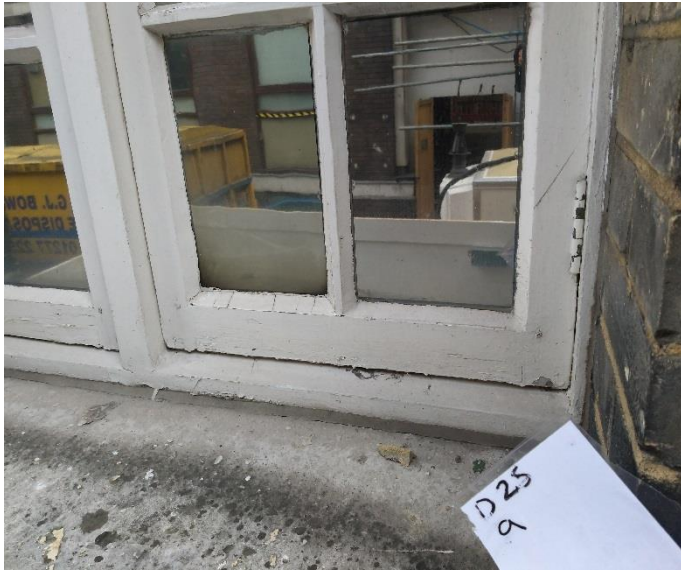
Drop 25 Picture 6



Drop 25 Picture 7



Drop 25 Picture 8



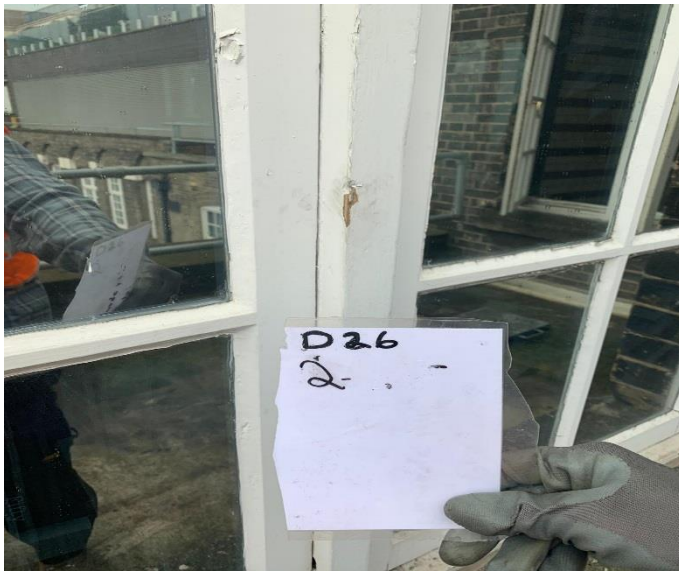
Drop 25 Picture 9

DROP 26

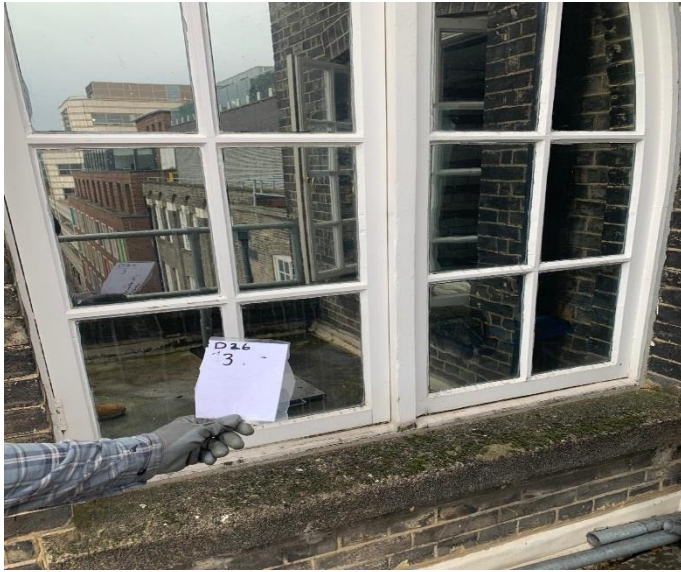
PICTURE	DAMAGE DESCRIPTION
1	Flaking paint, cracked putty
2	Flaking paint, cracked putty, minor damage
3	Flaking paint, cracked putty
4	Flaking paint, cracked putty
5	Minor damage, cracked putty, flaking paint, weathered sill



Drop 26 Picture 1



Drop 26 Picture 2



Drop 26 Picture 3



Drop 26 Picture 4



Drop 26 Picture 5