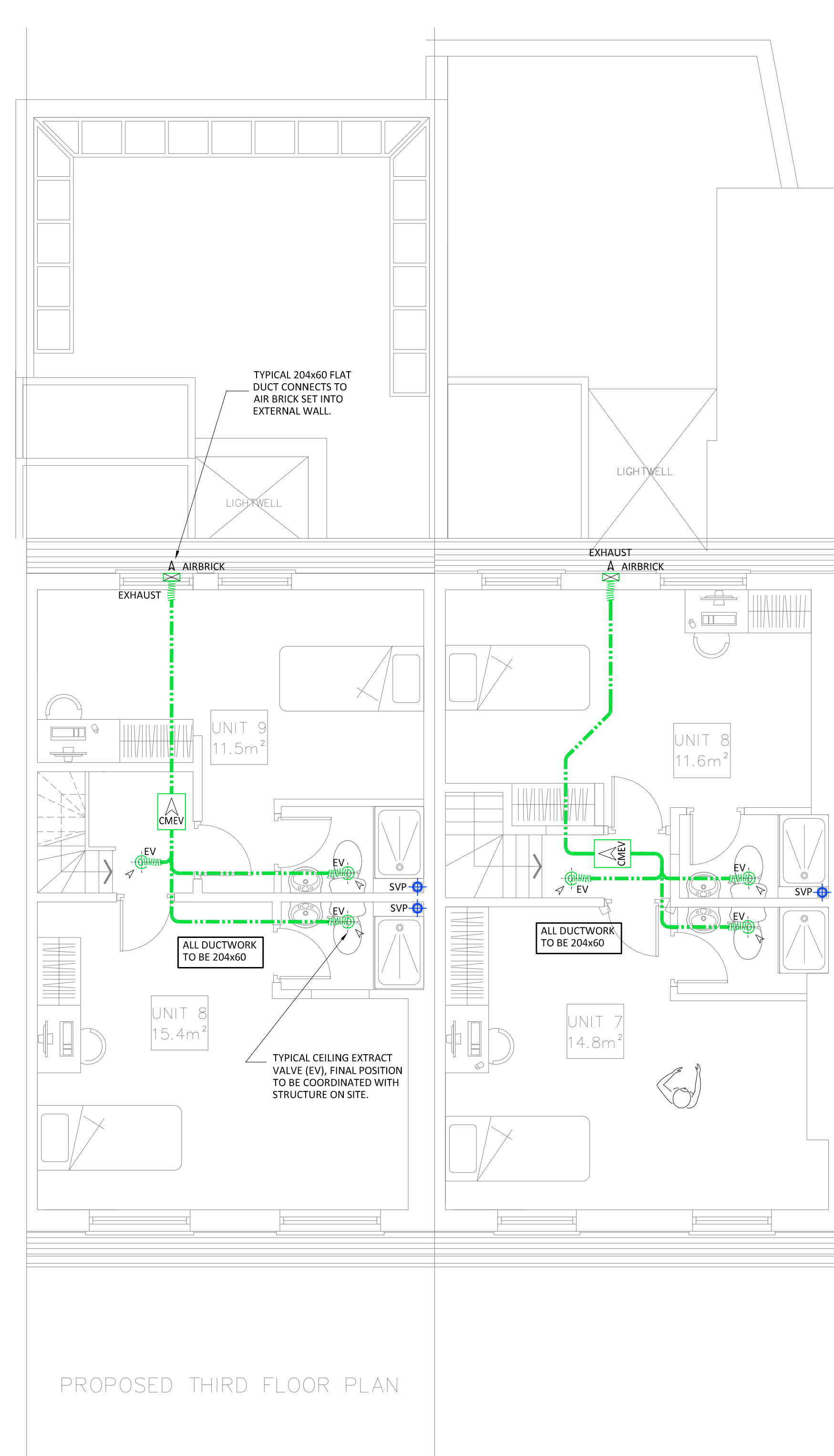
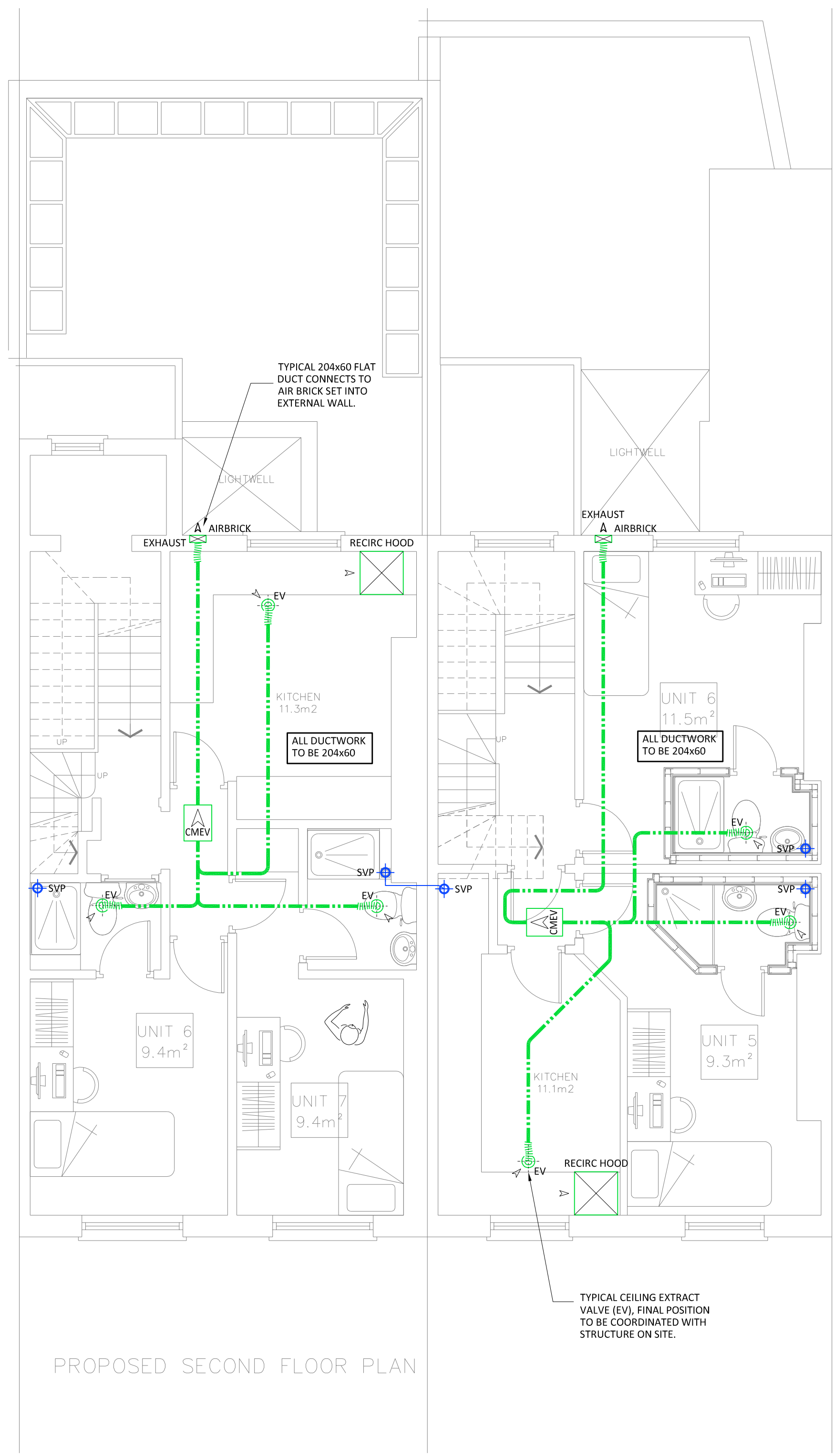
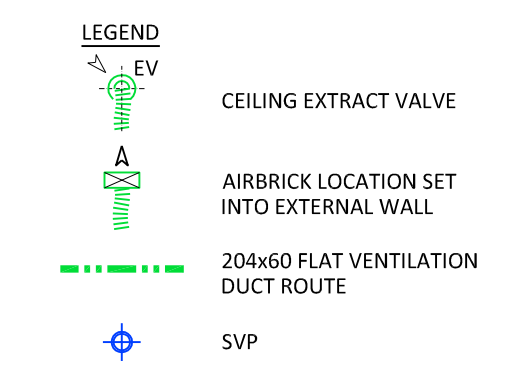


Rev	Date	By	Description
P1	11.08.18	JSO	Preliminary Issue
P2	29.08.18	JSO	Preliminary Issue
P3	13.03.19	JSO	Preliminary Issue



- DO NOT SCALE FROM THIS DRAWING. ALL DIMENSIONS ARE NOMINAL AND MUST BE CHECKED ON SITE.
- TO BE READ IN CONJUNCTION WITH ARCHITECTS AND ENGINEERING DRAWINGS, SPECIFICATIONS & SCHEDULES.
- THESE DRAWINGS ARE FOR INITIAL INFORMATION ONLY AND ARE SUBJECT TO CHANGE DURING FINAL DESIGN STAGE.
- THESE DRAWINGS ARE COPYRIGHT OF OAKLEY M&E. PLEASE OBTAIN PERMISSION BEFORE COPYING. THESE DRAWINGS MUST NOT BE MODIFIED OTHER THAN BY OAKLEY M&E.

99 Wey Hill, Haslemere, Surrey, GU27 1HT
 Email Us - info@oakleymed.co.uk
 Visit Us - www.oakleymed.co.uk
 Call Us - 01403 785426

Client:
Oceanic Jewellers

Project:
**109 & 110 Guilford Street
 London**

Title:
**Mechanical Services
 Extract Ventilation & SVP Layout
 Second & Third Floor**

Date:	Drawn:	Checked:	Scale @ A1:
10.08.2018	HH	JSO	1:50
Xref: Xref-GuilfordSt-10-08-2018			
Drawing Status: Preliminary			
Drawing Number: P1110-M-101			Rev: P3