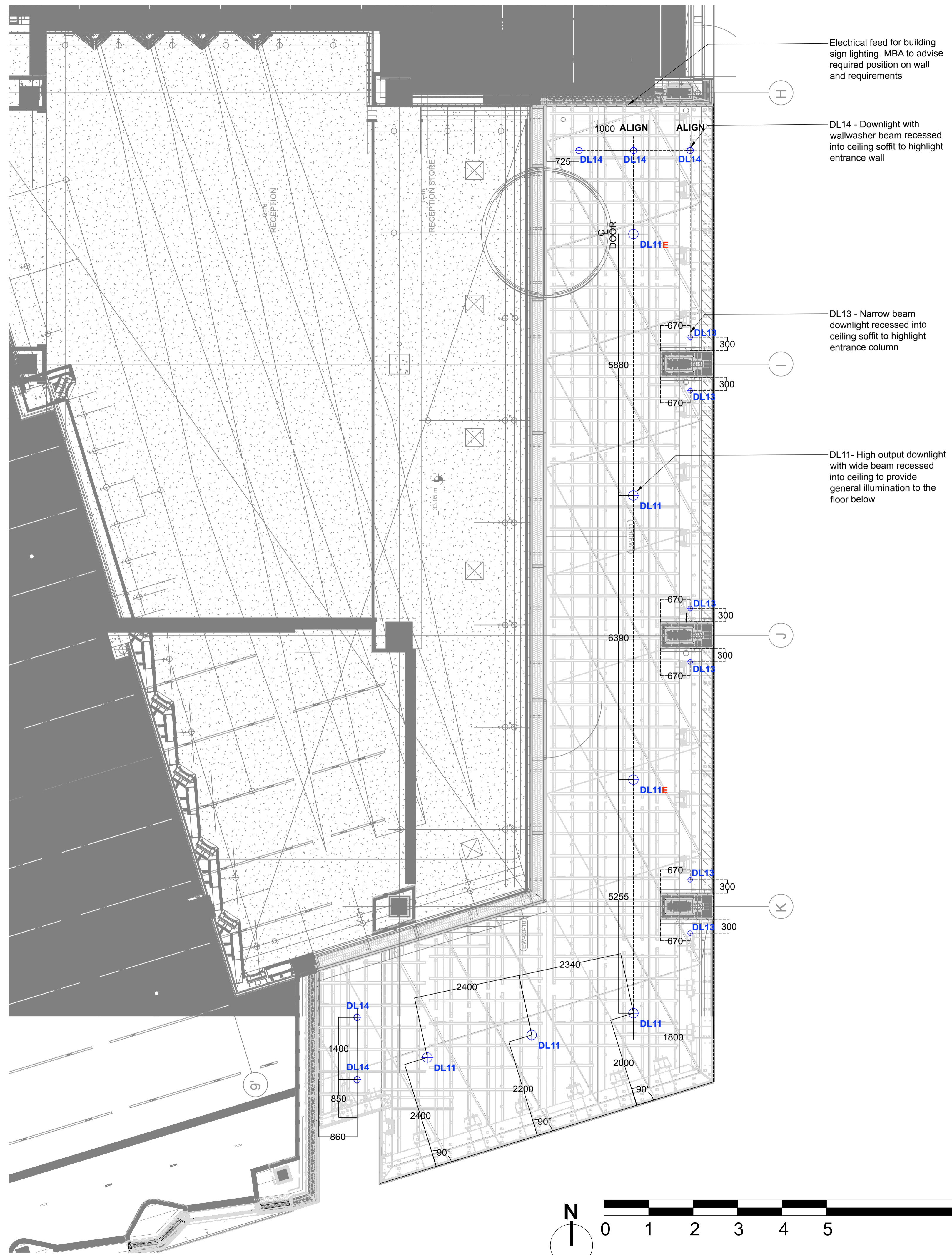


LEGEND	
TYPE	DESCRIPTION
DL11	Recessed downlight with wide beam, high output, warm white
DL11 E	Recessed maintained emergency downlight with wide beam, high output, warm white, supplied with 3hr emergency pack
DL13	Recessed downlight with narrow beam, warm white
DL14	Recessed downlight with wallwash beam, high output, warm white



Date	Rev	Description
10/06/21	C2	Co-ordination for construction
22/04/21	F	Revised location of downlights to columns
23/03/21	E	Draft for Co-ordination
04/09/20	D	North arrow and scale bar added for planning
17/07/20	C1	Notes updated
03/07/20	C	L5 removed; setting out added; legend and annotation updated
29/05/20	B	Downlights added
09/11/18	A	Generally updated following comment from MBA
12/07/18	DFT	First Issue DRAFT

Notes

All emergency lighting in this area is DALI reporting and forms part of the Lutron system for monitoring

The drawing has been updated following the workshop meeting 20.04.21. As per the discussions the edge ceiling structure adjacent to the columns would need to be addressed to accommodate the downlights to the columns. Co-ordination to be completed by Permasteelisa and 8Build

DALI drivers and emergency packs for luminaires are remote and are to be housed in the ceiling void behind the fitting. Maximum driver distances and dimensions can be found in the luminaire specification.

Remote emergency LED indicators are to be located adjacent to the relevant luminaires.

Important Note

Where Dimensions are not given, drawings must not be scaled.

For complete luminaire breakdown refer to schedules

In the event of conflict between this drawing and lead consultants drawing the matter must be referred prior to proceeding

CLIENT	Lazari Investments Ltd	
PROJECT	Stephenson House, 75 Hampstead Road, London, NW1 2PL	PROJECT NO. 0164
STATUS	For Construction	
SCALE	1:50 @ A1 1:100 @ A3	DATE 12/07/2018
TITLE	Colonnade First Floor RCP	
DRAWING NO.	0164 - 201	REVISION C2