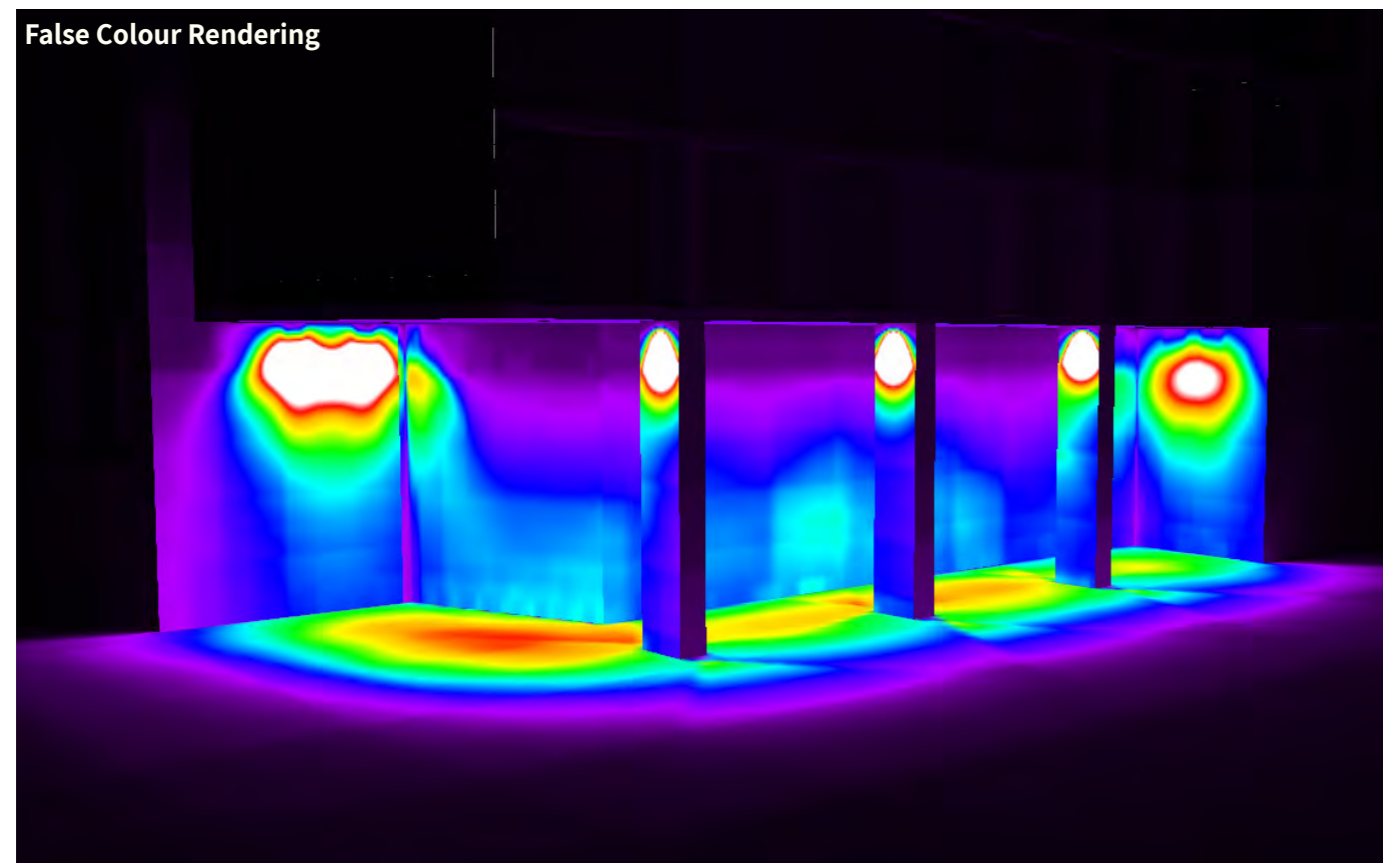


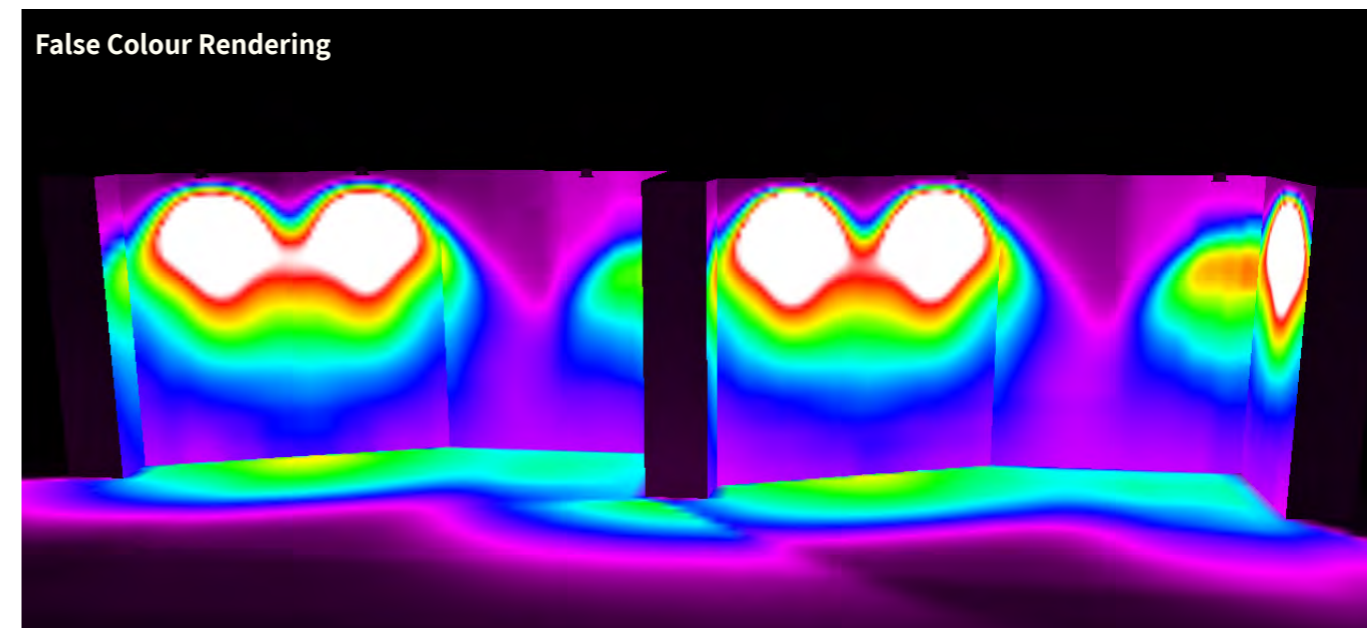
STEPHENSON HOUSE - EXTERIOR LIGHTING PLANNING INFORMATION

Exterior Entrances

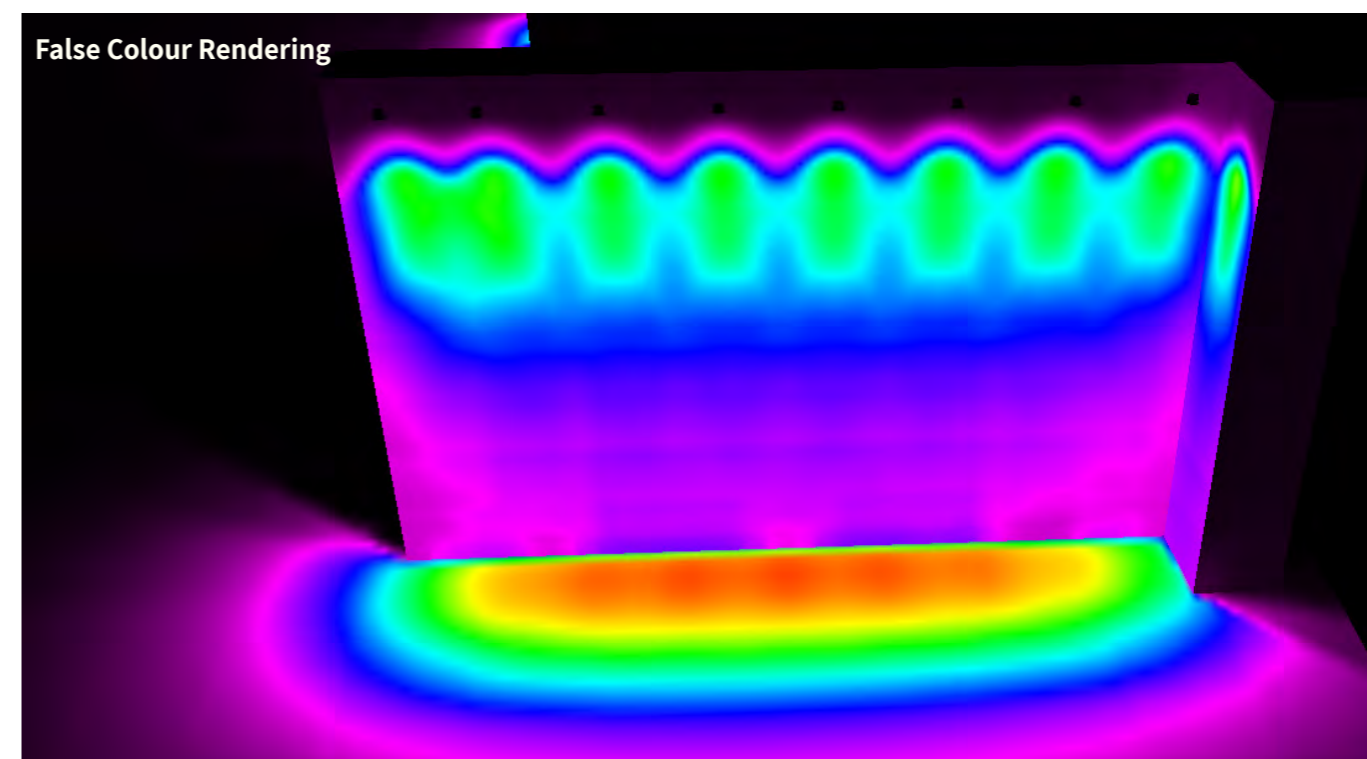
Main Entrance - Corner of Drummond Street and Hampstead Road



Residential Entrance - Drummond Street



SME Entrance - Corner of William Road and Drummond Street



Main Office Entrance

The main entrance creates a bright and welcoming entrance illuminating vertical surfaces as well as the floor below. The light level under the canopy ranges from 125 to 175 lux from the canopy lighting alone. The reception lighting will also provide additional light to the entrance. Both the interior reception and exterior canopy lighting will be commissioned to provide a welcoming and safe light level.

The lighting to the SME entrance is 150 lux when on at 100% output it is expected that these lights will be commissioned to balance with the surrounding environment.

The residential entrance ranges from 75 lux to 100 lux. Lighting to the residential entrances is directed at the surrounding surfaces to highlight their finishes and create a welcoming and residential feel. All lights in here are fully dimmable.

False Colours

	200.00	lx
	175.00	lx
	150.00	lx
	125.00	lx
	100.00	lx
	75.00	lx
	50.00	lx
	25.00	lx
	0.00	lx