

42. If you will be using non-road mobile machinery (NRMM) on site with net power between 37kW and 560kW it will be required to meet the standards set out below. The standards are applicable to both variable and constant speed engines and apply for both PM and NOx emissions.

From 1st September 2015

(i) Major Development Sites – NRMM used on the site of any major development will be required to meet Stage IIIA of EU Directive 97/68/EC

(ii) Any development site within the Central Activity Zone - NRMM used on any site within the Central Activity Zone will be required to meet Stage IIIB of EU Directive 97/68/EC

From 1st September 2020

(iii) Any development site - NRMM used on any site within Greater London will be required to meet Stage IIIB of EU Directive 97/68/EC

(iv) Any development site within the Central Activity Zone - NRMM used on any site within the Central Activity Zone will be required to meet Stage IV of EU Directive 97/68/EC

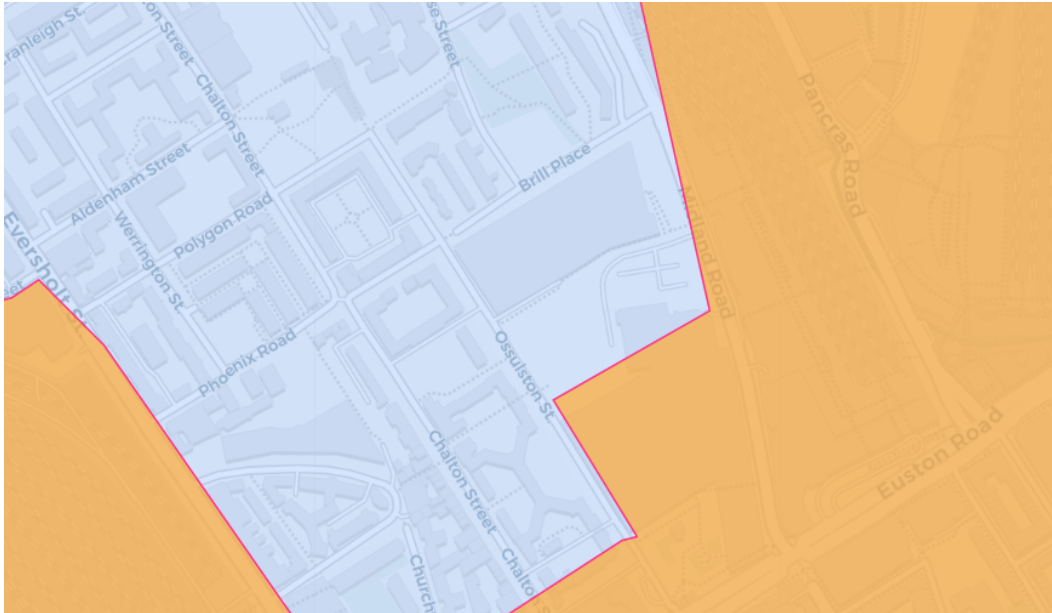
Please provide evidence demonstrating the above requirements will be met by answering the following questions:

Please see responses on following pages.

a) Construction time period: September 2024 – November 2029 Refer to Appendix A for further details.

b) Is the development within the CAZ? (Y/N):

Yes. The development is located outside the Central Activities Zone (shown shaded in orange), but the development is located within the Greater London Zone (shown shaded in blue) and therefore NRMM (Non Road Mobile Machinery) will be required to meet Stage IIIB of EU Directive 97/68/EC.



c) Will the NRMM with net power between 37kW and 560kW meet the standards outlined above? (Y/N): Yes. Confirmed.

d) Please confirm that all relevant machinery will be registered on the NRMM Register, including the site name under which it has been registered:

We can confirm that the Contractor will ensure that all relevant machinery will be registered on the online NRMM register.

e) Please confirm that an inventory of all NRMM will be kept on site and that all machinery will be regularly serviced, and service logs kept on site for inspection:

We confirm that the Contractor will ensure that all NRMM will be kept on site and that all machinery will be regularly serviced, and service logs kept on site for inspection.

f) Please confirm that records will be kept on site which details proof of emission limits, including legible photographs of individual engine plates for all equipment, and that this documentation will be made available to local authority officers as required:

In accordance with requirements of NRMM we confirm that the Contractor will keep the records required.

43. Vehicle engine idling (leaving engines running whilst parked or not in traffic) produces avoidable air pollution and can damage the health of drivers and local communities. Camden Council and City of London Corporation lead the London **Idling Action Project** to educate drivers about the health impacts of air pollution and the importance of switching off engines as a simple action to help protect the health of all Londoners.

Idling Action calls for businesses and fleet operators to take the **Engines Off pledge** to reduce emissions and improve air quality by asking fleet drivers, employees and subcontractors to avoid idling their engines wherever possible. Free driver training materials are available from the website: <https://idlingaction.london/business/>

Please provide details about how you will reduce avoidable air pollution from engine idling, including whether your organisation has committed to the Engines Off pledge and the number of staff or subcontractors who have been provided with free training materials.

The appointed Contractor will commit to the #enginesoff campaign detailed as part of the Idling Action Project is supported by the project, which will involve;

- Driver education workshop for fleet and business drivers so they do not understand why they should not contribute to unnecessary air pollution by idling.
- Ask your drivers to take the #EnginesOff pledge.
- Implement supporting policies by using our template engine idling and template green vehicle procurement and management policies.
- Promote the campaign by using our car stickers in your vehicles; using our logo on the corporate social responsibility section of your website; display our posters; share our @idlingaction tweets and tell your customers that you support the campaign.
- Take part in an Idling Action event – we can help you arrange a day of direct action utilising volunteers to head out and speak directly to idling vehicles around your site.

Details of the numbers of contractors actively engaged in the campaign will be provided once the Principal Contractor has been appointed.

In addition to these initiatives;

- It will be a requirement that any vehicles either waiting to enter the site or within the site are directed to switch off their engines when not in operation.
- 60% of construction vehicles will be at least Euro compliant and where applicable (local exhaust ventilation) LEV will be implemented.

The construction traffic routes have, as far as possible been developed to avoid high density residential and commercial areas.

Agreement

The agreed contents of this Construction Management Plan must be complied with unless otherwise agreed in writing by the Council. This may require the CMP to be revised by the Developer and reapproved by the Council. The project manager shall work with the Council to review this Construction Management Plan if problems arise in relation to the construction of the development. Any future revised plan must be approved by the Council in writing and complied with thereafter.

It should be noted that any agreed Construction Management Plan does not prejudice further agreements that may be required such as road closures or hoarding licences.

Signed:

Date:

Print Name:

Position:

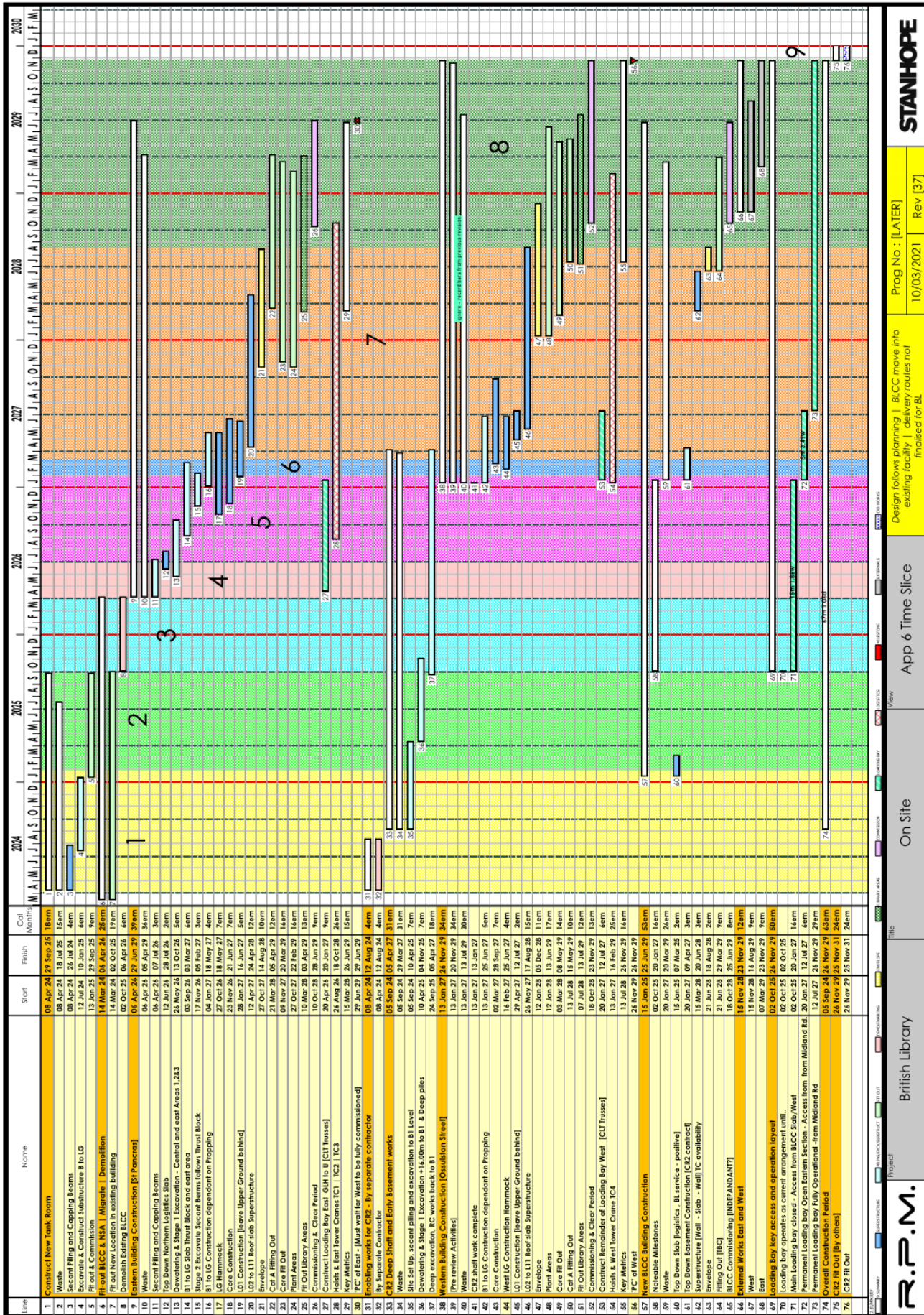
Please submit to: planningobligations@camden.gov.uk

End of form.

V2.6

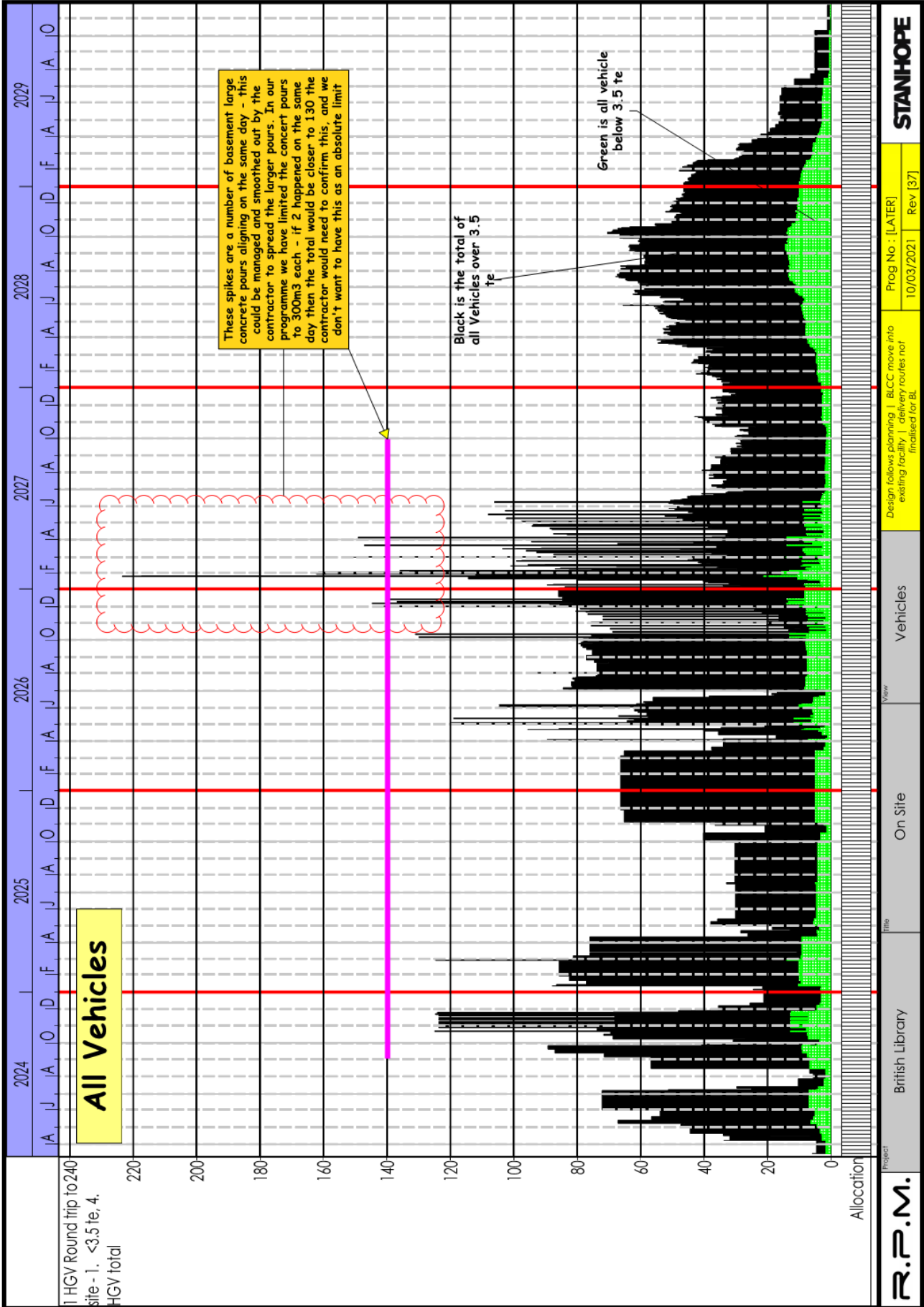
Appendices

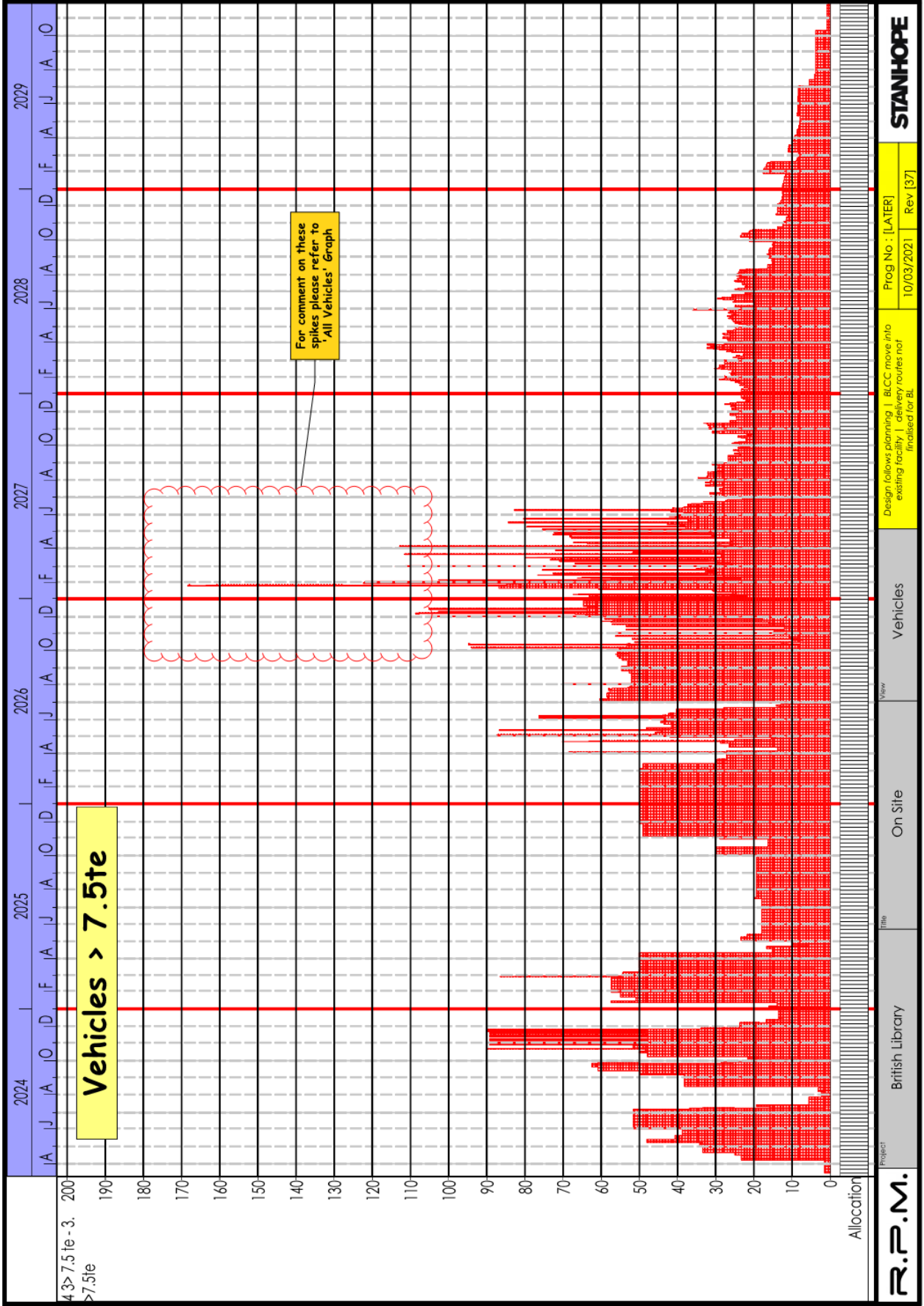
1.0 Summary Programme

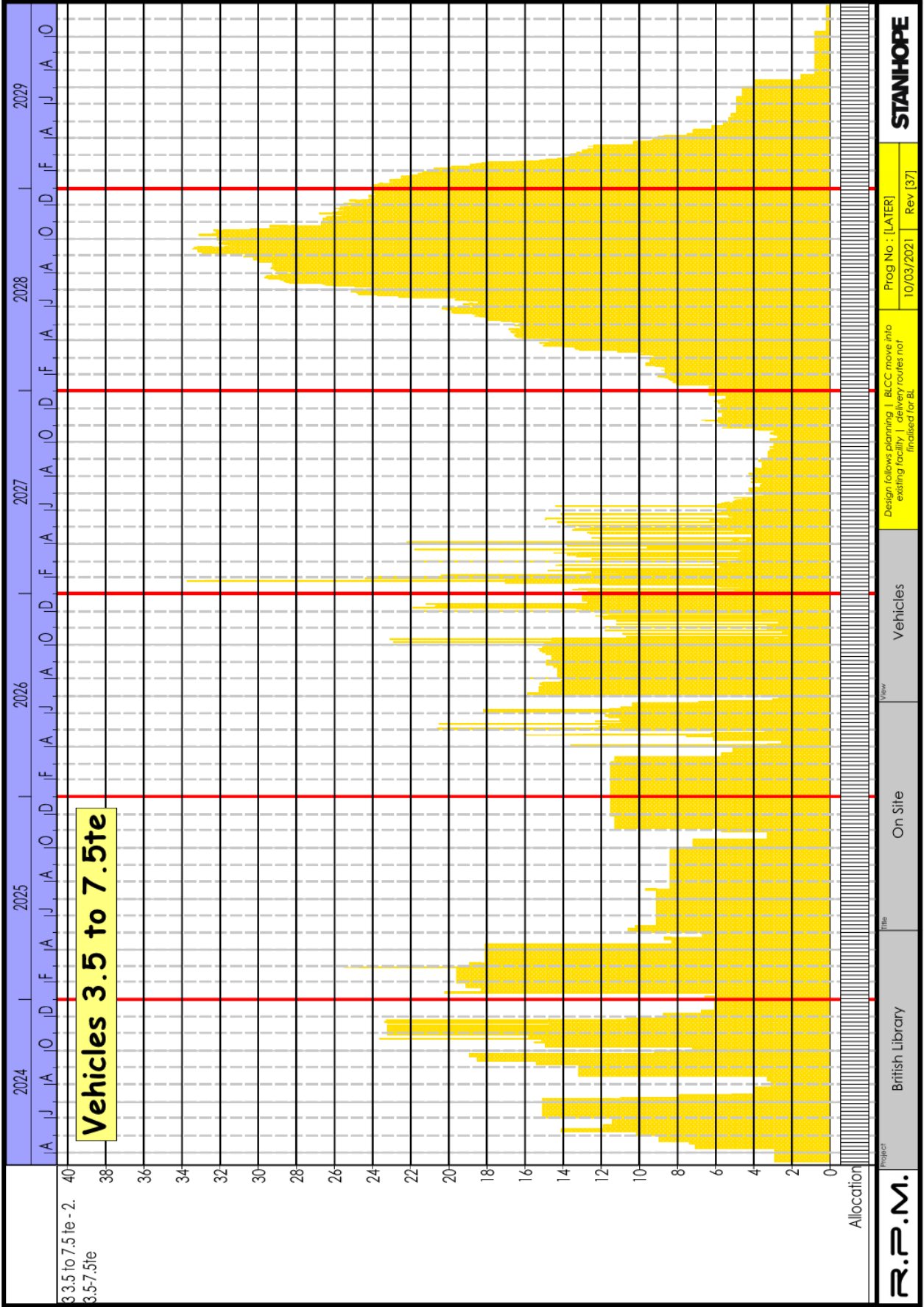


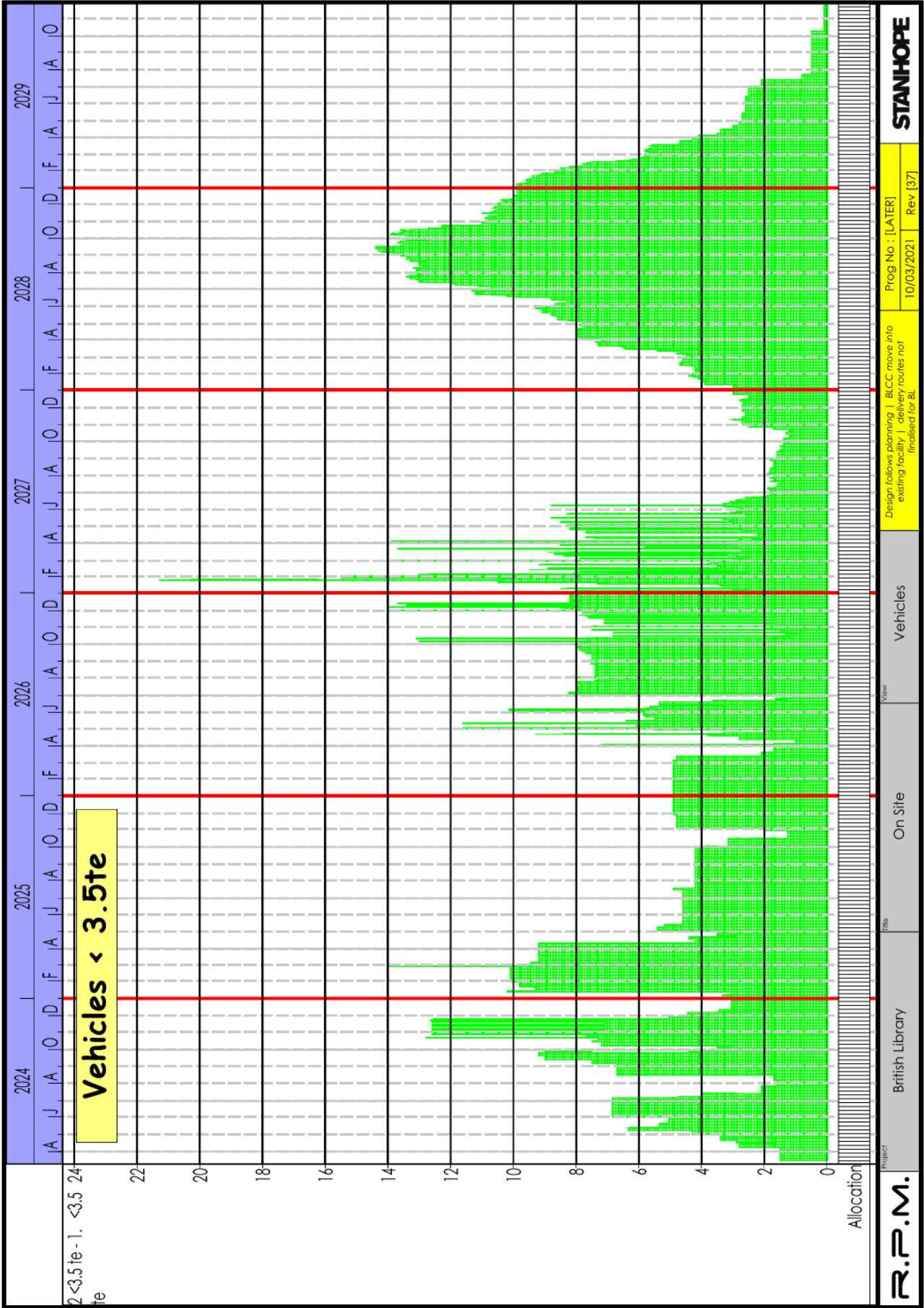
R.P.M. British Library
 Project: **British Library**
 On Site
 App 6 Time Slice
 Design follows planning | BLC move info existing facility | delivery routes not finalised for BL
 Prog No: [LATER] 10/03/2021 Rev [37]
STANHOPE
 Grant Robert

2.0 Construction Vehicle Data









4.0 Logistics/Phasing Plans