





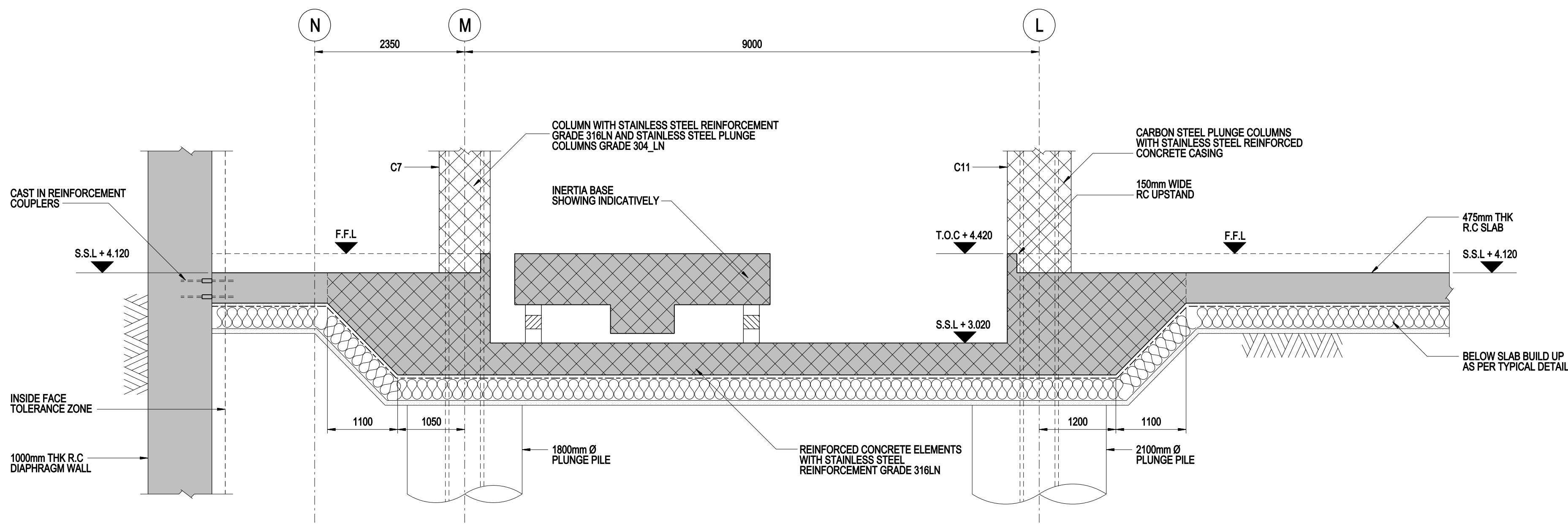
-  DENOTES AREA WITH EPOXY COATED REINFORCEMENT TO BE USED IN CONCRETE ELEMENTS INCLUDING SLAB, UPSTANDS, COLUMNS AND BEAMS

 DENOTES AREA WITH STAINLESS STEEL REINFORCEMENT (GRADE 316 L/N) IN CONCRETE ELEMENTS INCLUDING SLAB, UPSTANDS, COLUMNS AND BEAMS

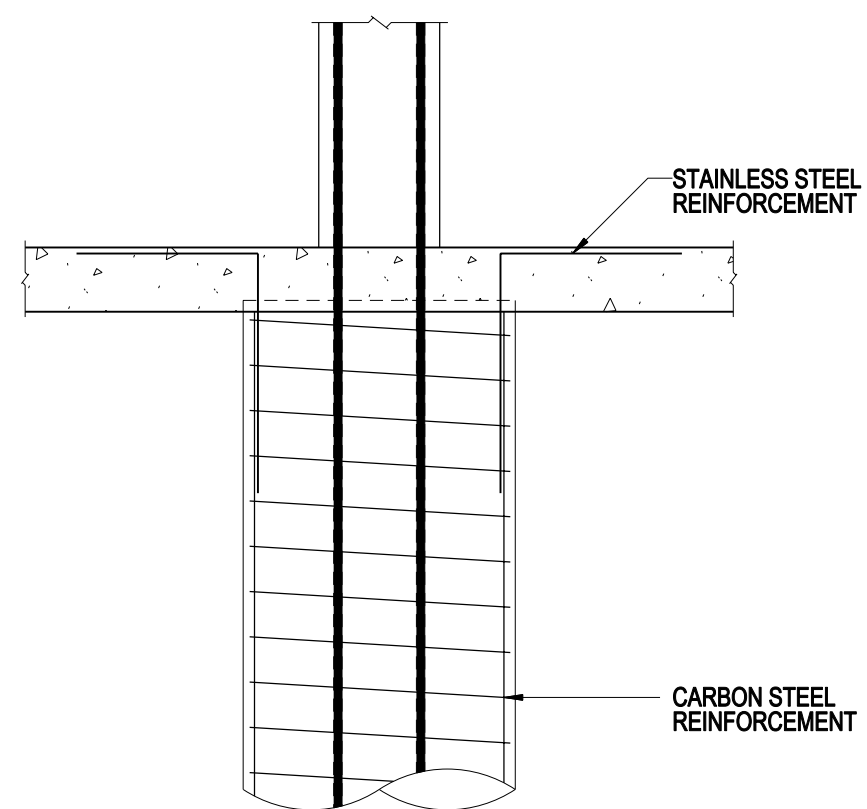
Consulting Structural and Civil Engineers  
100 St. John Street  
London EC1M 4EH  
T +44 (0)20 7250 7777  
F +44 (0)20 7250 7555  
E [info@akt-uk.com](mailto:info@akt-uk.com)  
W [www.akt-uk.com](http://www.akt-uk.com)

PLOT DATE 11/02/2011 BY ben.bufile

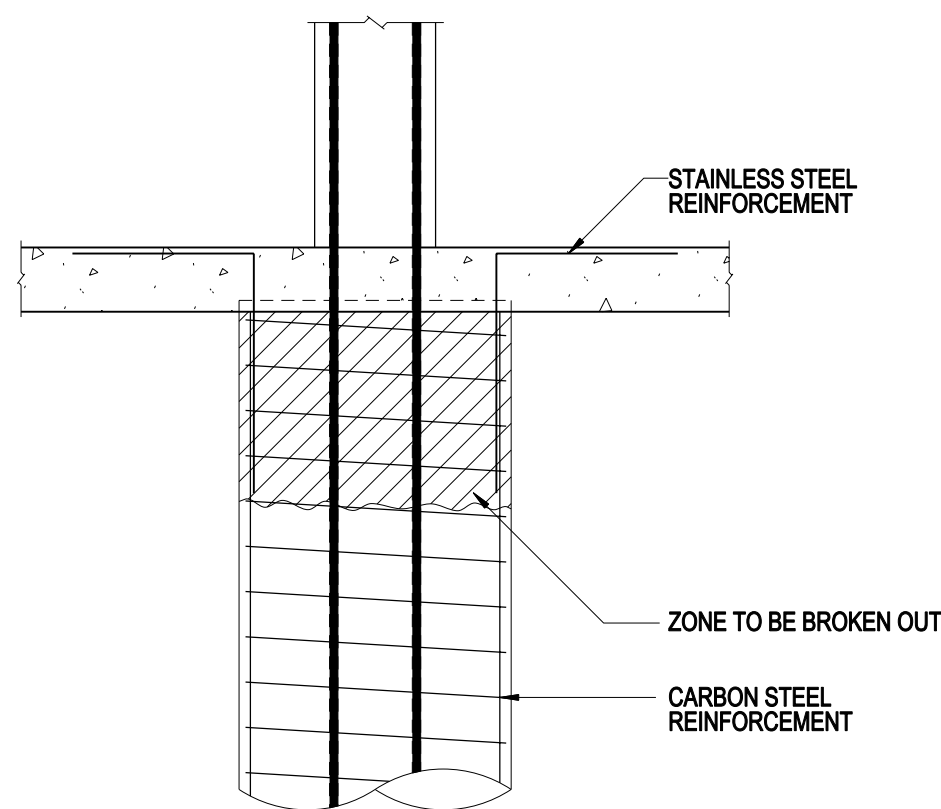
FOR INFORMATION ONLY



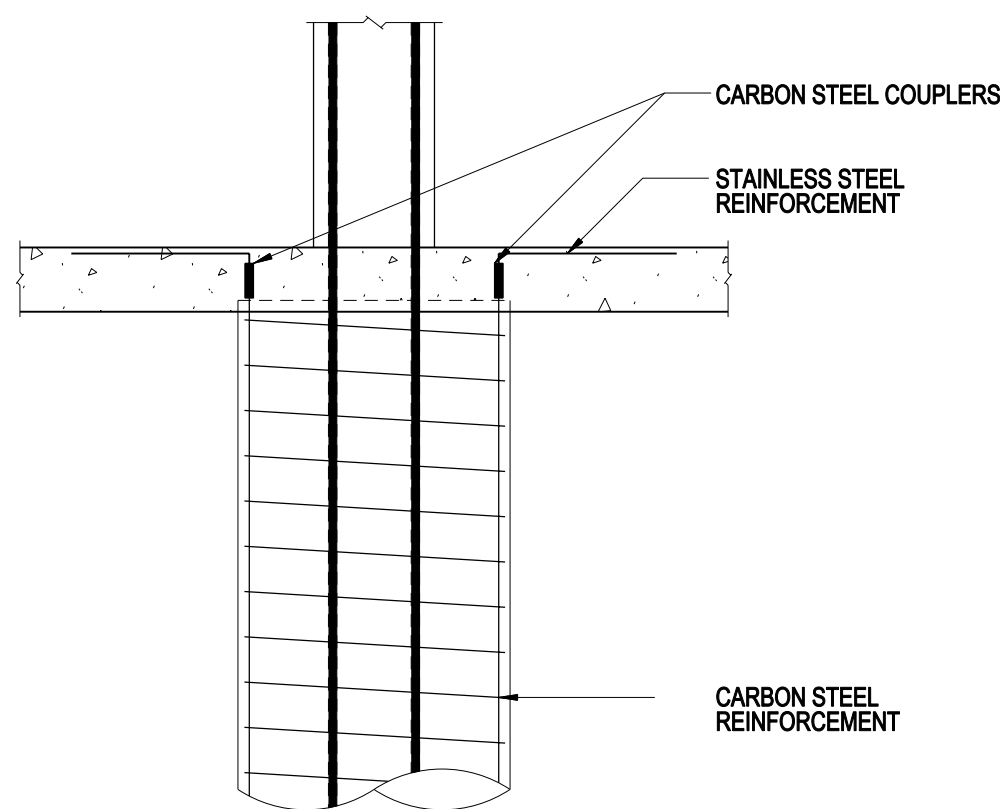
SECTION B208  
S-144



OPTION 1  
LAP STAINLESS STEEL REINFORCEMENT  
TO CARBON STEEL CAGE PRIOR TO  
POURING LAST SECTION OF PILE



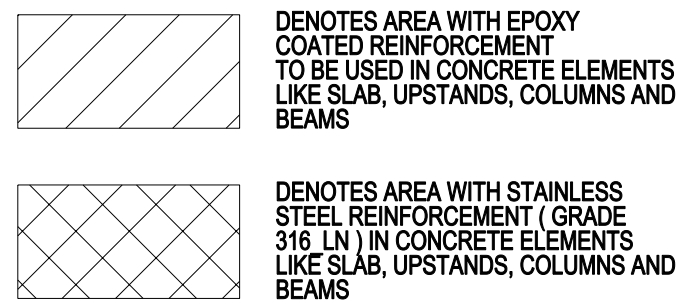
OPTION 2  
POUR PILE WITH CARBON STEEL  
CAGE ONLY. BREAK OUT TOP OF  
PILE AND LAP CAGE TO STAINLESS  
STEEL REINFORCEMENT PRIOR TO  
POURING TOP OF PILE WITH BASEMENT



OPTION 3  
POUR PILE WITH CARBON  
STEEL CAGE ONLY. INSTALL  
COUPLERS AND STAINLESS  
STEEL REINFORCEMENT

TYPICAL PILE HEAD DETAIL IN AREAS  
WITH STAINLESS STEEL REINFORCED SLABS

- NOTES
1. THIS DRAWING IS TO BE READ IN CONJUNCTION WITH ALL OTHER ARCHITECTS AND ENGINEERS DRAWINGS, SPECIFICATIONS AND DETAILS.
  2. ALL DIMENSIONS ARE SHOWN IN MILLIMETRES UNLESS STATED OTHERWISE
  3. DO NOT SCALE FROM THIS DRAWING
  4. FOR MOVEMENT AND TOLERANCES REFER TO DRAWING No S-GEN-005
  5. FOR GENERAL NOTES PLEASE REFER TO S-GEN-001/004
  6. FOR COLUMN AND BEAM SCHEDULE REFER TO DRAWING No. S-GEN-050



P1	11.02.11	ISSUED FOR STAGE D	BB	RP
T1	20.09.10	ISSUED FOR TENDER	BB	RP

REV	DATE	DESCRIPTION	BY	CHECKED
-----	------	-------------	----	---------



Consulting Structural and Civil Engineers  
100 St. John Street  
London EC1M 4ED  
T +44 (0)20 7250 7777  
F +44 (0)20 7250 7555  
E info@akt-uk.com  
W www.akt-uk.com

UKCMRI

CLIENT

UKCMRI

PROJECT

LB4 SECTIONS AND DETAILS  
SHEET 3 OF 3

TITLE

DRAWN JH SCALE 1:50 @ A1 CAD FILENAME S-LB4-712.dgn

DATE AUG 10 CHECKED RP STATUS INFORMATION

A041949 S-LB4-712 P1  
PROJECT No. DRAWING No. REVISION

PLOT DATE 11/02/2011 BY ben.budde

FOR INFORMATION ONLY

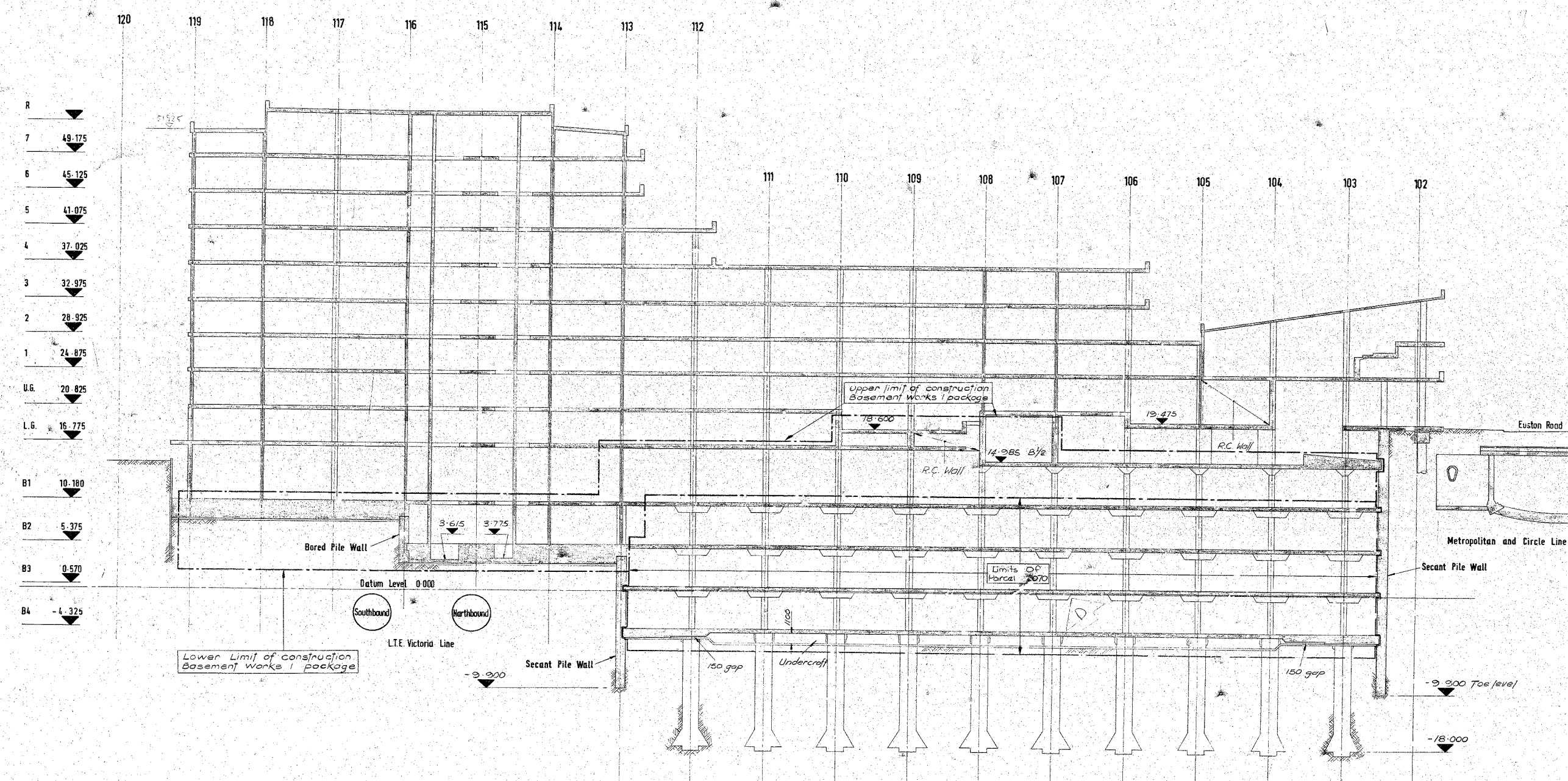
## Appendix G

### Historical British Library Drawings





1



notes

Parcel limits indicated for planning purposes only

**MANAGEMENT CONTRACT TENDER DRAWING**

Key Plan

For Tender Information Only  
Parcel 2070 - Limits of Parcel 2070 added  
Note added

Issued to show limit of construction of Basement Works I package

revisions

architect  
COLIN ST JOHN WILSON & PARTNERS

structural engineer  
OVE ARUP & PARTNERS

services engineer  
STEENSEN VARMING MULCAHY & PARTNERS

quantity surveyor  
DAVIS BELFIELD & EVEREST

**BRITISH LIBRARY EUSTON**

client  
DEPARTMENT OF THE ENVIRONMENT  
(Directorate of ancient monuments and historic buildings)

client job no 78002 / OCA

O.A.P. job no. 6271

**PHASE 1A CROSS SECTION ADJACENT TO GRID LINE W**

scale 1:200 date March 1979 drawn M.C.

drawing no  
**XC7/03**

revision A B C

MICROBOX



XC7/03

## Appendix H

### Flood map

# Flood map for planning

Your reference  
**British Libra**

Location (easting/northing)  
**530019/182893**

Created  
**15 Jun 2020 14:38**

**Your selected location is in flood zone 1, an area with a low probability of flooding.**

## **This means:**

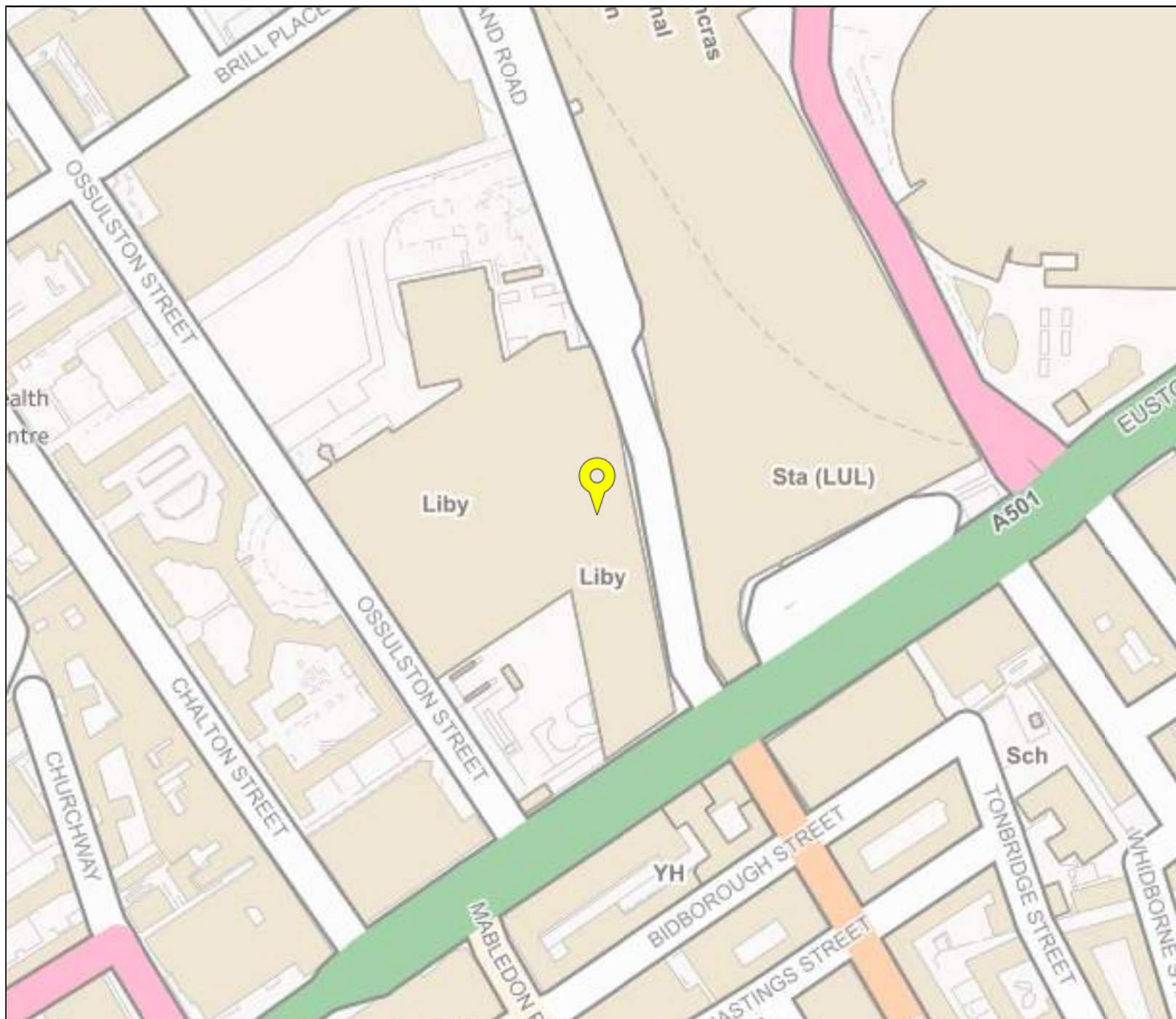
- you don't need to do a flood risk assessment if your development is smaller than 1 hectare and not affected by other sources of flooding
- you may need to do a flood risk assessment if your development is larger than 1 hectare or affected by other sources of flooding or in an area with critical drainage problems

## **Notes**

The flood map for planning shows river and sea flooding data only. It doesn't include other sources of flooding. It is for use in development planning and flood risk assessments.

This information relates to the selected location and is not specific to any property within it. The map is updated regularly and is correct at the time of printing.

The Open Government Licence sets out the terms and conditions for using government data.  
<https://www.nationalarchives.gov.uk/doc/open-government-licence/version/3/>









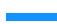

## Flood map for planning


Your reference  
**British Libra**

Location (easting/northing)  
**530019/182893**

Scale  
**1:2500**

Created  
**15 Jun 2020 14:38**

-  Selected point
-  Flood zone 3
-  Flood zone 3: areas benefiting from flood defences
-  Flood zone 2
-  Flood zone 1
-  Flood defence
-  Main river
-  Flood storage area

  
 0 20 40 60m

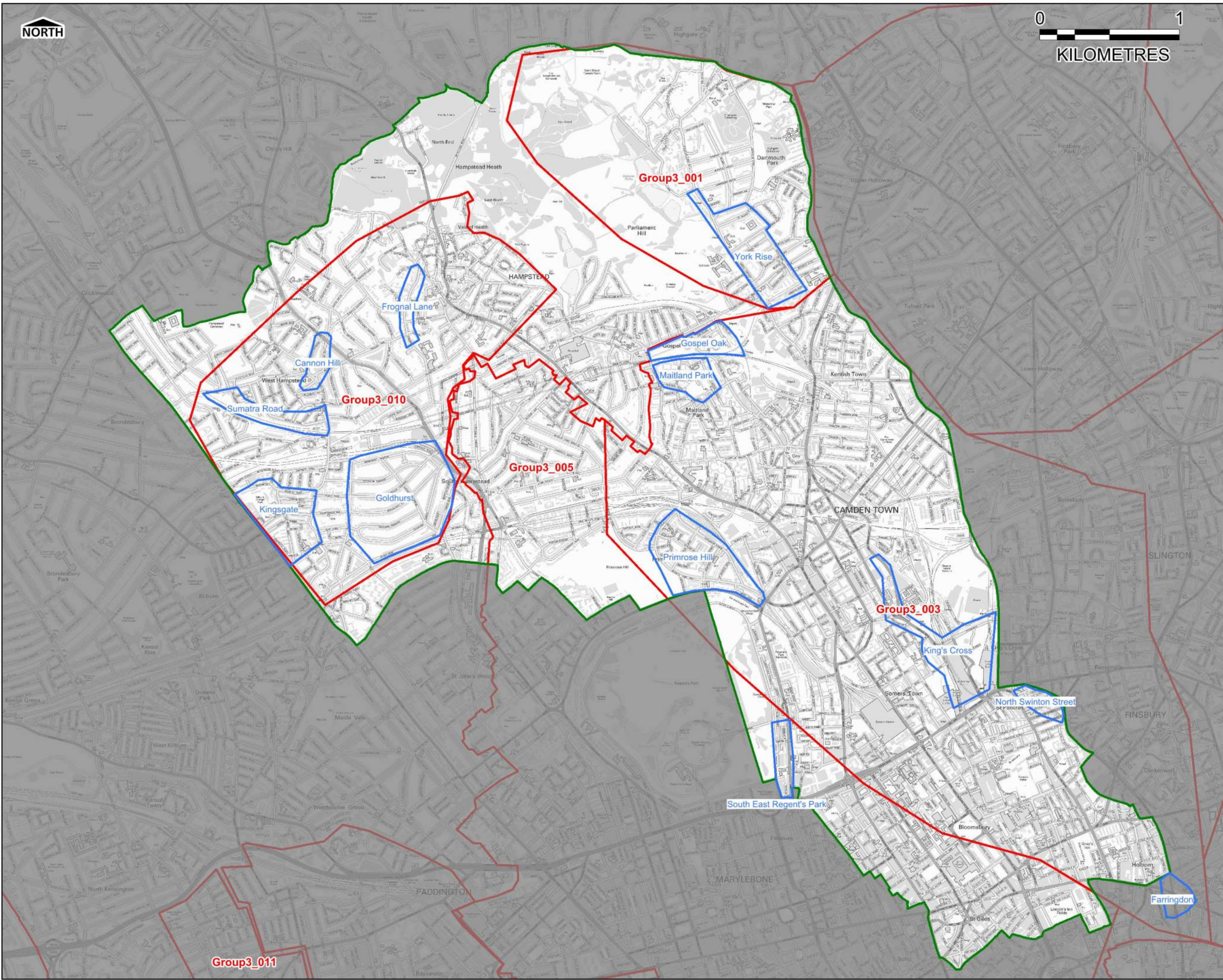




THIS DRAWING IS TO BE USED ONLY FOR THE PURPOSE OF ISSUE THAT IT WAS ISSUED FOR AND IS SUBJECT TO AMENDMENT.

- LEGEND**
- London Borough Camden Boundary
  - Critical Drainage Area
  - Local Flood Risk Zone

N:\Water\Current Projects\47070547 Camden SFRA Update (ghs)\0700 WIP\0705 GIS\_Data\01-WIP\01\_03-Project\_Files\WORS



Contains Ordnance Survey data © Crown copyright and database right 2014

Revision Details	By	Check	Date	Suffix

Purpose of Issue  
**FINAL**

Client

Project Title  
**LONDON BOROUGH OF CAMDEN STRATEGIC FLOOD RISK ASSESSMENT**

Drawing Title  
**Critical Drainage Areas / Local Flood Risk Zones**

Drawn	Checked	Approved	Date
CB/EB	EY	MT	04/06/2014

URS Internal Project No.  
**47070547**

Scale at A3  
**1:25,000**

THIS DOCUMENT HAS BEEN PREPARED PURSUANT TO AND IS SUBJECT TO THE TERMS OF URS' APPOINTMENT BY ITS CLIENT. URS ACCEPTS NO LIABILITY FOR ANY USE OF THIS DOCUMENT OTHER THAN BY ITS ORIGINAL CLIENT OR FOLLOWING URS' EXPRESS AGREEMENT TO SUCH USE, AND ONLY FOR THE PURPOSES FOR WHICH IT WAS PREPARED AND PROVIDED.

URS Infrastructure & Environment UK Limited  
6 - 8 Greencroft Place  
London  
SW1P 1PL  
Telephone +44 (0)207 7985000  
Fax +44 (0)207 7985001  
www.ursglobal.com



Drawing Number  
**FIGURE 6**

Rev  
**Rev 2**



## Appendix I

Selected Groundwise report  
pages



Our Ref: 19188670      Your Ref: URO6946.4FM

Monday, 29 June 2020

Joe Shawyer  
Suite 8 Chichester House Suite 8 Chichester House 45 Chichester Road  
Southend on Sea  
Essex  
SS1 2JU

Dear Joe Shawyer

Thank you for contacting us regarding UK Power Networks equipment at the above site. I have enclosed a copy of our records which show the electrical lines and/or electrical plant. I hope you find the information useful.

I have also enclosed a fact sheet which contains important information regarding the use of our plans and working around our equipment. Safety around our equipment is our number one priority so please ensure you have completed all workplace risk assessments before you begin any works.

Should your excavation affect our Extra High Voltage equipment (6.6 KV, 22 KV, 33 KV or 132 KV), please contact us to obtain a copy of the primary route drawings and associated cross sections.

If you have any further queries do not hesitate to contact us.

Plan Provision  
0800 056 5866



This information is made available to you on the terms set out below. If you do not accept the terms of use set out in this fact sheet please do not use the plans and return them to UK Power Networks.

1. UK Power Networks does not warrant that the information provided to you is correct. You rely upon it at your own risk.
2. UK Power Networks does not exclude or limit its liability if it causes the death of any person or causes personal injury to a person where such death or personal injury is caused by its negligence.
3. Subject to paragraph 2 UK Power Networks has no liability to you in contract, in tort (including negligence), for breach of statutory duty or otherwise how for any loss, damage, costs, claims, demands, or expenses that you or any third party may suffer or incur as a result of using the information provided whether for physical damage to property or for any economic loss (including without limitation loss of profit, loss of opportunity, loss of savings, loss of goodwill, loss of business, loss of use) or any special or consequential loss or damage whatsoever.
4. The information about UK Power Networks electrical plant and/or electric lines provided to you belongs to and remains the property of UK Power Networks. You must not alter it in any respect.
5. The information provided to you about the electrical plant and/or electric lines depicted on the plans may NOT be a complete record of such apparatus belonging to UK Power Networks. The information provided relates to electric lines and/or electrical plant belonging to UK Power Networks that it believes to be present but the plans are not definitive: other electric lines and/or electrical plant may be present and that may or may not belong to UK Power Networks.
6. Other apparatus not belonging to UK Power Networks is not shown on the plan. It is your responsibility to make your own enquiries elsewhere to discover whether apparatus belonging to others is present. It would be prudent to assume that other apparatus is present.
7. You are responsible for ensuring that the information made available to you is passed to those acting on your behalf and that all such persons are made aware of the contents of this letter.
8. Because the information provided to you may not be accurate, you are recommended to ascertain the presence of UK Power Networks electric lines and/or electrical plant by the digging of trial holes. Trial holes should be dug by hand only.

Excavations must be carried out in line with the Health and Safety Executive guidance document HSG 47. We will not undertake this work. A copy of HSG 47 can be obtained from the Health and Safety Executives website.

All electric lines discovered must be considered LIVE and DANGEROUS at all times and must not be cut, resited, suspended, bent or interfered with unless specially authorised by UK Power Networks.

The electric line and electrical plant belonging to UK Power Networks remains so even when made dead and abandoned and any such electric line and/or electrical plant exposed shall be reported to UK Power Networks.

Where your works are likely to affect our electric lines and/or electrical plant an estimate of the price of any protective /diversionary works can be prepared by UK Power Networks Branch at Metropolitan House, Darkes Lane, Potters Bar, Herts. , EN6 1AG, telephone no. 0845 2340040



- 9 Any work near to any overhead electricity lines must be carried out by you in accordance with the Health and Safety Executive guidance document GS6 and the Electricity at Work Regulations.

The GS6 Recommendations may be purchased from HSE Books or downloaded from the Energy Networks Association's website.

If given a reasonable period of prior notice UK Power Networks will attend on site without charge to advise how and where "goal posts" should be erected. If you wish to use this service, in the first instance please telephone: 0845 6014516 between 08:30 and 17:00 Monday to Friday.

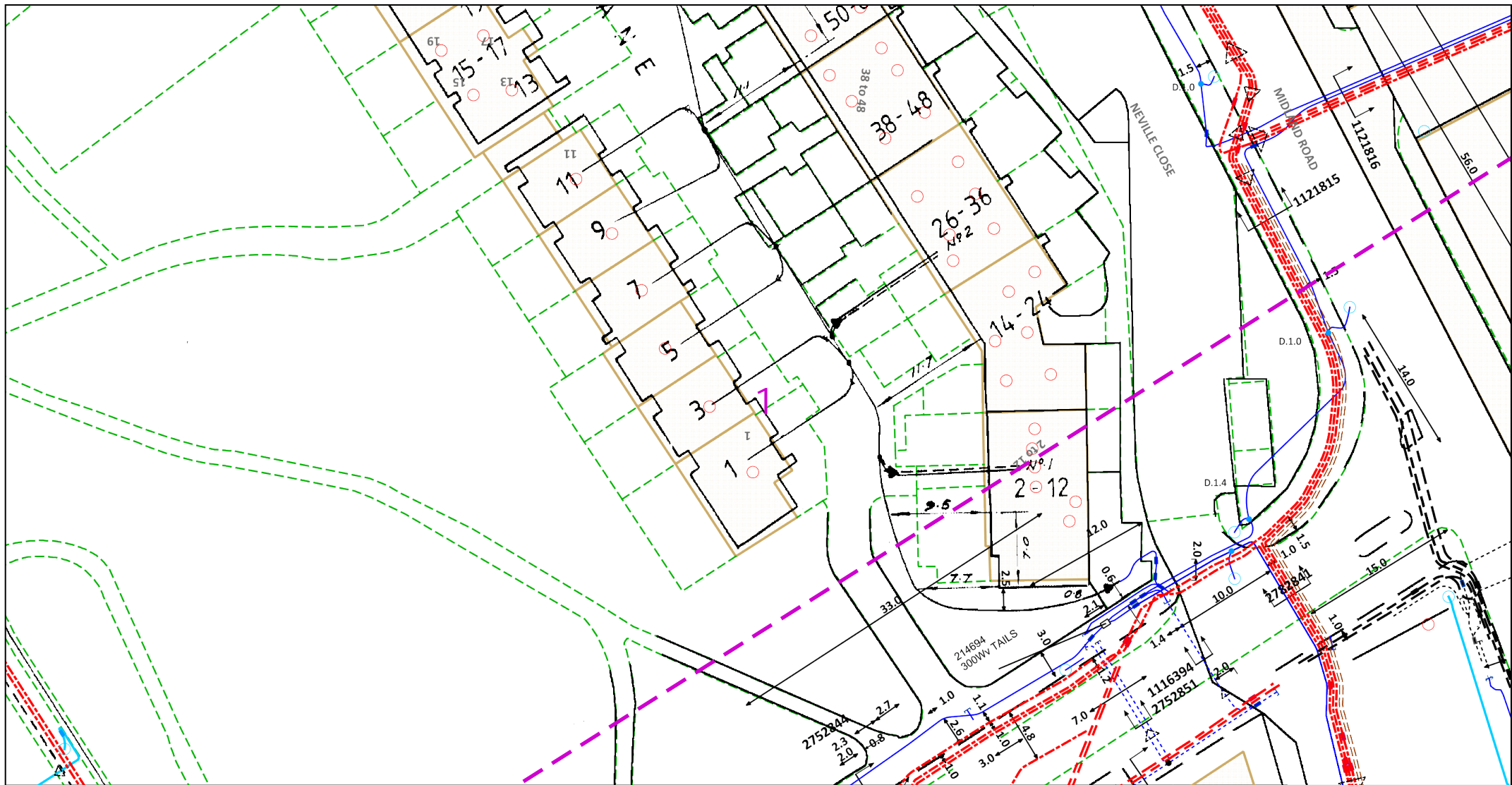
10. You are responsible for the security of the information provided to you. It must not be given, sold or made available upon payment of a fee to a third party.
11. If in carrying out work on land in, on, under or over which is installed an electric line and/or electrical plant that belongs to UK Power Networks you and/or anyone working on your behalf damages (however slightly) that apparatus you must inform immediately UK Power Networks by our emergency 24 hour three digit telephone number **105** providing;
- your name, address and telephone number;
  - the date, time and place at which such damage was caused;
  - a description of the electric line and/or electrical plant to which damage was caused;
  - the name of the person whom it appears to you is responsible for that damage;
  - the nature of the damage.
12. The expression "UK Power Networks" includes UK Power Networks (EPN) plc, UK Power Networks (LPN) plc, UK Power Networks (SEPN) plc, UK Power Networks and any of their successors and predecessors in title.











Dig Sites Area: Line:

The quality and accuracy of any print will depend on your printer, your computer and its print settings. Measurements scaled from this plan may not match measurements between the same points on the ground.

This plan must be used with the attached 'Symbols' document.

Date Requested: 29/06/2020  
Job Reference: 19188670  
Site Location: 529480 182592  
Requested by: Mr Joe Shawyer

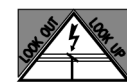
Your Scheme/Reference:  
URO6946.4FM  
Scale: 1:500 (When plotted at A4)

1. The position of the apparatus shown on this drawing is believed to be correct but the original landmarks may have been altered since the apparatus was installed.
2. The exact position of the apparatus should be verified - use approved cable avoidance tools prior to excavation using suitable hand tools.
3. It is essential that trial holes are carefully made avoiding the use of mechanical tools or picks until the exact location of all the cables have been determined.
4. It must be assumed that there is a service cable into each property, lamp column and street sign, etc.
5. All cables must be treated as being live unless proved otherwise by UK Power Networks.
6. The information provided must be given to all people working near UK Power Networks plant and equipment. Do not use plans more than 3 months after the issue date for excavation purposes.
7. Please be aware that electric cables/lines belonging to other owners of licensed electricity distribution systems may be present and it is your responsibility to identify their location.
8. Please be aware the Low Voltage Overhead power lines are not currently displayed for the Eastern Region via this service, if you require records on the location of these please contact our Plan Provision team directly via plans@ukpowernetworks.co.uk.

1. UK Power Networks does not warrant that the information provided to you is correct. You rely upon it at your own risk.
2. UK Power Networks does not exclude or limit its liability if it causes the death of any persons or causes personal injury to a person.
3. Subject to paragraph 2 UK Power Networks has no liability to you in contract, in tort (including negligence), for breach of statutory duty or otherwise for any loss, damage, cost, claims, demands, or expenses that you or any third party may suffer or incur as a result of using the information provided whether for physical damage to property or for any economic loss (including without limitation loss of profit, loss of opportunity, loss of savings, loss of goodwill, loss of business, loss of use) or any special or consequential loss or damage whatsoever.
4. This plan has been provided to you on the basis of the terms of use set out in the covering letter that accompanies this plan. If you do not accept and/or do not understand the terms of use set out in the covering letter you must not use the plan and must return it to the sender of the letter.
5. You are responsible for the security of the information provided to you. It must not be given, sold or made available upon payment of a fee to a third party.
6. Please Note: The Overview map does not display UK Power Networks electricity network and should not be used for the location of UK Power Networks assets. For detail of the electricity network please view the relevant page as highlighted in the Overview map.

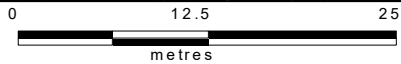
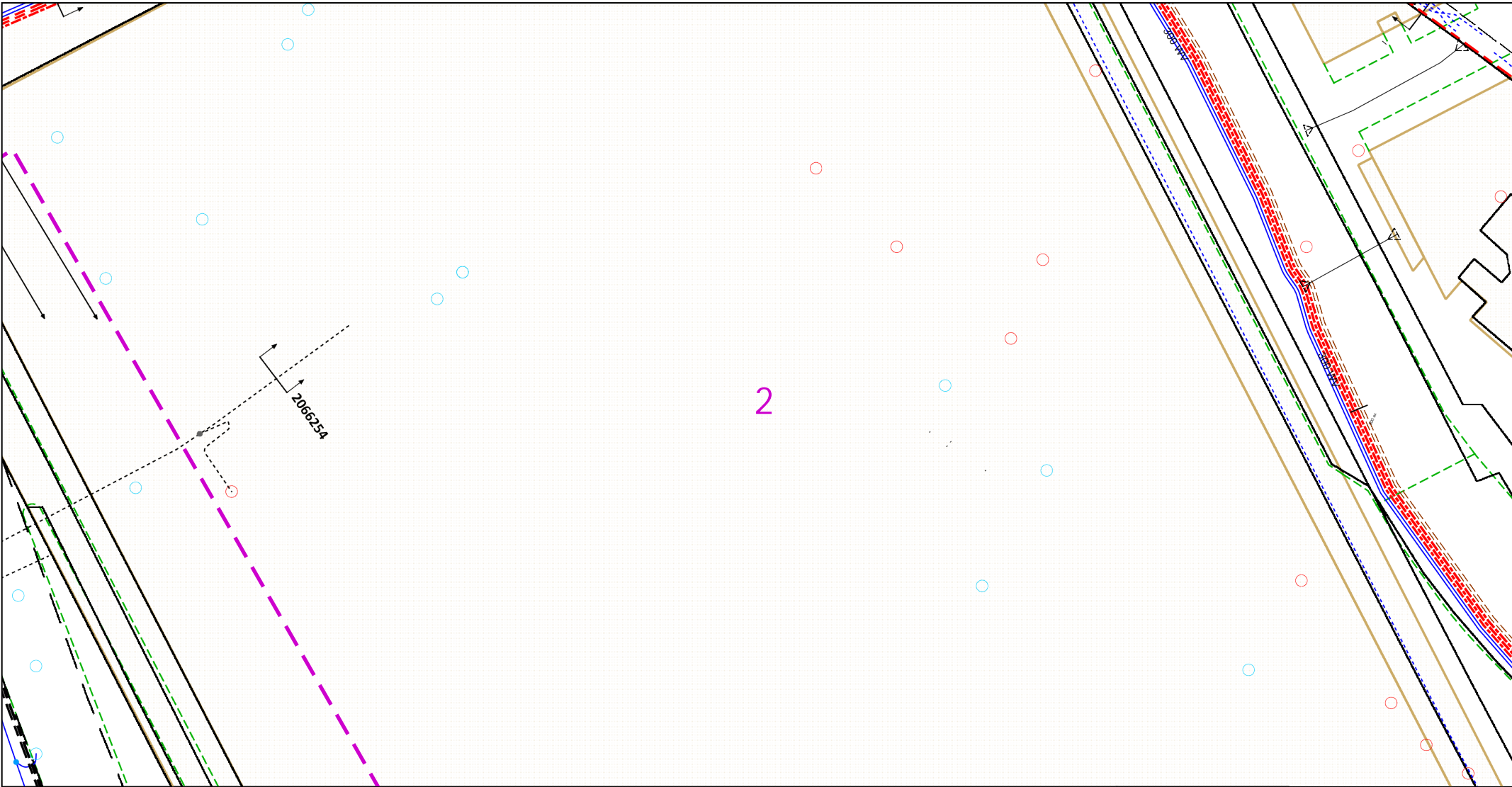


IF IN DOUBT - ASK! PHONE  
0800 056 5866  
EMERGENCY - If you damage a  
cable or line  
Phone 0800 783 8838 (24hrs)  
URGENTLY



ALWAYS LOOK UP  
BEFORE  
YOU START WORK  
Refer to HSE Guidance  
note GS6

Maps produced at 1:2500 scale are Geo-Schematics which show LV mains cables and overhead lines (in some cases all voltages). Prior to carrying out excavations you must refer to the 1:500 records to determine the location of all known underground plant and equipment.



Dig Sites Area:  Line: 

The quality and accuracy of any print will depend on your printer, your computer and its print settings. Measurements scaled from this plan may not match measurements between the same points on the ground.

This plan must be used with the attached 'Symbols' document.

Date Requested: 29/06/2020  
Job Reference: 19188670  
Site Location: 529480 182592  
Requested by: Mr Joe Shawyer

Your Scheme/Reference:  
URO6946.4FM  
Scale: 1:500 (When plotted at A4)

1. The position of the apparatus shown on this drawing is believed to be correct but the original landmarks may have been altered since the apparatus was installed.
2. The exact position of the apparatus should be verified - use approved cable avoidance tools prior to excavation using suitable hand tools.
3. It is essential that trial holes are carefully made avoiding the use of mechanical tools or picks until the exact location of all the cables have been determined.
4. It must be assumed that there is a service cable into each property, lamp column and street sign, etc.
5. All cables must be treated as being live unless proved otherwise by UK Power Networks.
6. The information provided must be given to all people working near UK Power Networks plant and equipment. Do not use plans more than 3 months after the issue date for excavation purposes.
7. Please be aware that electric cables/lines belonging to other owners of licensed electricity distribution systems may be present and it is your responsibility to identify their location.
8. Please be aware the Low Voltage Overhead power lines are not currently displayed for the Eastern Region via this service, if you require records on the location of these please contact our Plan Provision team directly via plans@ukpowernetworks.co.uk.

1. UK Power Networks does not warrant that the information provided to you is correct. You rely upon it at your own risk.
2. UK Power Networks does not exclude or limit its liability if it causes the death of any persons or causes personal injury to a person.
3. Subject to paragraph 2 UK Power Networks has no liability to you in contract, in tort (including negligence), for breach of statutory duty or otherwise for any loss, damage, cost, claims, demands, or expenses that you or any third party may suffer or incur as a result of using the information provided whether for physical damage to property or for any economic loss (including without limitation loss of profit, loss of opportunity, loss of savings, loss of goodwill, loss of business, loss of use) or any special or consequential loss or damage whatsoever.
4. This plan has been provided to you on the basis of the terms of use set out in the covering letter that accompanies this plan. If you do not accept and/or do not understand the terms of use set out in the covering letter you must not use the plan and must return it to the sender of the letter.
5. You are responsible for the security of the information provided to you. It must not be given, sold or made available upon payment of a fee to a third party.
6. Please Note: The Overview map does not display UK Power Networks electricity network and should not be used for the location of UK Power Networks assets. For detail of the electricity network please view the relevant page as highlighted in the Overview map.



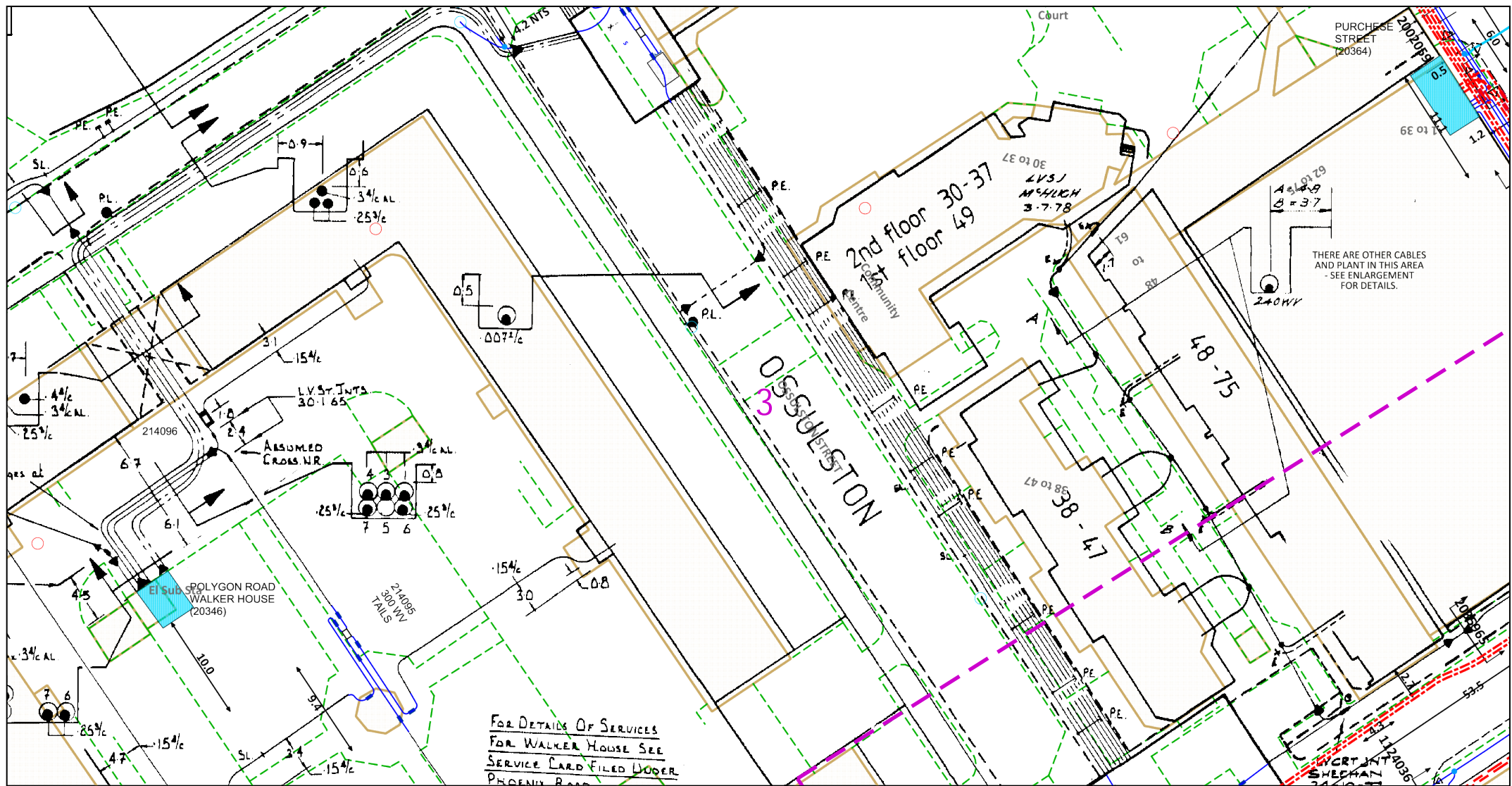
IF IN DOUBT - ASK! PHONE  
0800 056 5866  
EMERGENCY - If you damage a  
cable or line  
Phone 0800 783 8838 (24hrs)  
URGENTLY



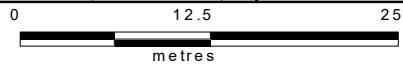
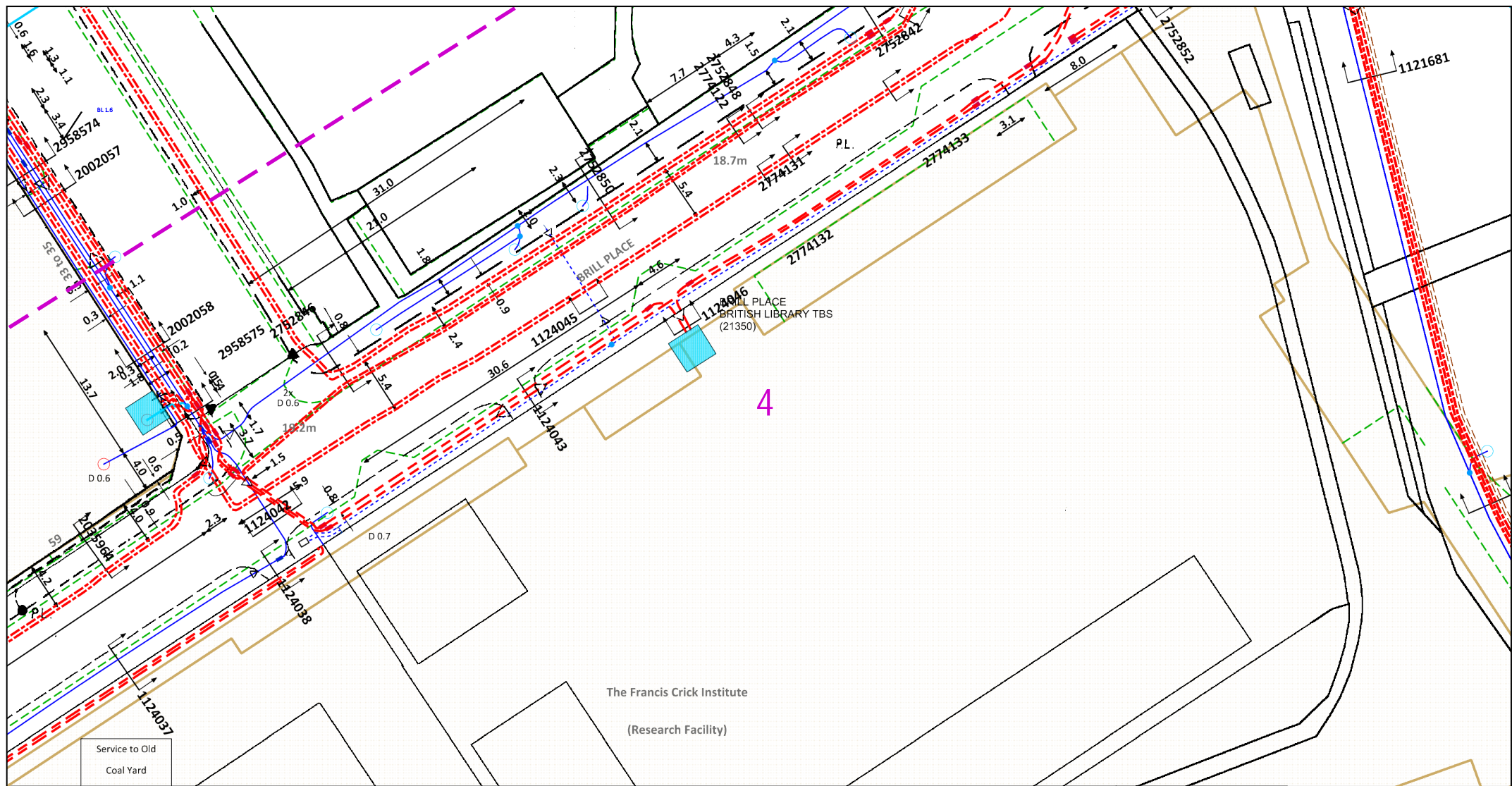
ALWAYS LOOK UP  
BEFORE  
YOU START WORK  
Refer to HSE Guidance  
note GS6

Maps produced at 1:2500 scale are Geo-Schematics which show LV mains cables and overhead lines (in some cases all voltages). Prior to carrying out excavations you must refer to the 1:500 records to determine the location of all known underground plant and equipment.





<div><div><div>012.525</div><div></div></div><div>metres</div></div> <div>Dig Sites Area: <div><div></div><div></div><div></div><div></div></div> Line: <div><div></div><div></div><div></div><div></div><div></div><div></div><div></div><div></div><div></div><div></div><div></div><div></div><div></div><div></div><div></div><div></div><div></div><div></div><div></div><div></div><div></div><div></div><div></div><div></div><div></div><div></div><div></div><div></div><div></div><div></div><div></div><div></div><div></div><div></div><div></div><div></div><div></div><div></div><div></div><div></div><div></div><div></div><div></div><div></div><div></div><div></div><div></div><div></div><div></div><div></div><div></div><div></div><div></div><div></div><div></div><div></div><div></div><div></div><div></div><div></div><div></div><div></div><div></div><div></div><div></div><div></div><div></div><div></div><div></div><div></div><div></div><div></div><div></div><div></div><div></div><div></div><div></div><div></div><div></div><div></div><div></div><div></div><div></div><div></div><div></div><div></div><div></div><div></div><div></div><div></div><div></div><div></div><div></div><div></div><div></div><div></div><div></div><div></div><div></div><div></div><div></div><div></div><div></div><div></div><div></div><div></div><div></div><div></div><div></div><div></div><div></div><div></div><div></div><div></div><div></div><div></div><div></div><div></div><div></div><div></div><div></div><div></div><div></div><div></div><div></div><div></div><div></div><div></div><div></div><div></div><div></div><div></div><div></div><div></div><div></div><div></div><div></div><div></div><div></div><div></div><div></div><div></div><div></div><div></div><div></div><div></div><div></div><div></div><div></div><div></div><div></div><div></div><div></div><div></div><div></div><div></div><div></div><div></div><div></div><div></div><div></div><div></div><div></div><div></div><div></div><div></div><div></div><div></div><div></div><div></div><div></div><div></div><div></div><div></div><div></div><div></div><div></div><div></div><div></div><div></div><div></div><div></div><div></div><div></div><div></div><div></div><div></div><div></div><div></div><div></div><div></div><div></div><div></div><div></div><div></div><div></div><div></div><div></div><div></div><div></div><div></div><div></div><div></div><div></div><div></div><div></div><div></div><div></div><div></div><div></div><div></div><div></div><div></div><div></div><div></div><div></div><div></div><div></div><div></div><div></div><div></div><div></div><div></div><div></div><div></div><div></div><div></div><div></div><div></div><div></div><div></div><div></div><div></div><div></div><div></div><div></div><div></div><div></div><div></div><div></div><div></div><div></div><div></div><div></div><div></div><div></div><div></div><div></div><div></div><div></div><div></div><div></div><div></div><div></div><div></div><div></div><div></div><div></div><div></div><div></div><div></div><div></div><div></div><div></div><div></div><div></div><div></div><div></div><div></div><div></div><div></div><div></div><div></div><div></div><div></div><div></div><div></div><div></div><div></div><div></div><div></div><div></div><div></div><div></div><div></div><div></div><div></div><div></div><div></div><div></div><div></div><div></div><div></div><div></div><div></div><div></div><div></div><div></div><div></div><div></div><div></div><div></div><div></div><div></div><div></div><div></div><div></div><div></div><div></div><div></div><div></div><div></div><div></div><div></div><div></div><div></div><div></div><div></div><div></div><div></div><div></div><div></div><div></div><div></div><div></div><div></div><div></div><div></div><div></div><div></div><div></div><div></div><div></div><div></div><div></div><div></div><div></div><div></div><div></div><div></div><div></div><div></div><div></div><div></div><div></div><div></div><div></div><div></div><div></div><div></div><div></div><div></div><div></div><div></div><div></div><div></div><div></div><div></div><div></div><div></div><div></div><div></div><div></div><div></div><div></div><div></div><div></div><div></div><div></div><div></div><div></div><div></div><div></div><div></div><div></div><div></div><div></div><div></div><div></div><div></div><div></div><div></div><div></div><div></div><div></div><div></div><div></div><div></div><div></div><div></div><div></div><div></div><div></div><div></div><div></div><div></div><div></div><div></div><div></div><div></div><div></div><div></div><div></div><div></div><div></div><div></div><div></div><div></div><div></div><div></div><div></div><div></div><div></div><div></div><div></div><div></div><div></div><div></div><div></div><div></div><div></div><div></div><div></div><div></div><div></div><div></div><div></div><div></div><div></div><div></div><div></div><div></div><div></div><div></div><div></div><div></div><div></div><div></div><div></div><div></div><div></div><div></div><div></div><div></div><div></div><div></div><div></div><div></div><div></div><div></div><div></div><div></div><div></div><div></div><div></div><div></div><div></div><div></div><div></div><div></div><div></div><div></div><div></div><div></div><div></div><div></div><div></div><div></div><div></div><div></div><div></div><div></div><div></div><div></div><div></div><div></div><div></div><div></div><div></div><div></div><div></div><div></div><div></div><div></div><div></div><div></div><div></div><div></div><div></div><div></div><div></div><div></div><div></div><div></div><div></div><div></div><div></div><div></div><div></div><div></div><div></div><div></div><div></div><div></div><div></div><div></div><div></div><div></div><div></div><div></div><div></div><div></div><div></div><div></div><div></div><div></div><div></div><div></div><div></div><div></div><div></div><div></div><div></div><div></div><div></div><div></div><div></div><div></div><div></div><div></div><div></div><div></div><div></div><div></div><div></div><div></div><div></div><div></div><div></div><div></div><div></div><div></div><div></div><div></div><div></div><div></div><div></div><div></div><div></div><div></div><div></div><div></div><div></div><div></div><div></div><div></div><div></div><div></div><div></div><div></div><div></div><div></div><div></div><div></div><div></div><div></div><div></div><div></div><div></div><div></div><div></div><div></div><div></div><div></div><div></div><div></div><div></div><div></div><div></div><div></div><div></div><div></div><div></div><div></div><div></div><div></div><div></div><div></div><div></div><div></div><div></div><div></div><div></div><div></div><div></div><div></div><div></div><div></div><div></div><div></div><div></div><div></div><div></div><div></div><div></div><div></div><div></div><div></div><div></div><div></div><div></div><div></div><div></div><div></div><div></div><div></div><div></div><div></div><div></div><div></div><div></div><div></div><div></div><div></div><div></div><div></div><div></div><div></div><div></div><div></div><div></div><div></div><div></div><div></div><div></div><div></div><div></div><div></div><div></div><div></div><div></div><div></div><div></div><div></div><div></div><div></div><div></div><div></div><div></div><div></div><div></div><div></div><div></div><div></div><div></div><div></div><div></div><div></div><div></div><div></div><div></div><div></div><div></div><div></div><div></div><div></div><div></div><div></div><div></div><div></div><div></div><div></div><div></div><div></div><div></div><div></div><div></div><div></div><div></div><div></div><div></div><div></div><div></div><div></div><div></div><div></div><div></div><div></div><div></div><div></div><div></div><div></div><div></div><div></div><div></div><div></div><div></div><div></div><div></div><div></div><div></div><div></div><div></div><div></div><div></div><div></div><div></div><div></div><div></div><div></div><div></div><div></div><div></div><div></div><div></div><div></div><div></div><div></div><div></div><div></div><div></div><div></div><div></div><div></div><div></div><div></div><div></div><div></div><div></div><div></div><div></div><div></div><div></div><div></div><div></div><div></div><div></div><div></div><div></div><div></div><div></div><div></div><div></div><div></div><div></div><div></div><div></div><div></div><div></div><div></div><div></div><div></div><div></div><div></div><div></div><div></div><div></div><div></div><div></div><div></div><div></div><div></div><div></div><div></div><div></div><div></div><div></div><div></div><div></div><div></div><div></div><div></div><div></div><div></div><div></div><div></div><div></div><div></div><div></div><div></div><div></div><div></div><div></div><div></div><div></div><div></div><div></div><div></div><div></div><div></div><div></div><div></div><div></div><div></div><div></div><div></div><div></div><div></div><div></div><div></div><div></div><div></div><div></div><div></div><div></div><div></div><div></div><div></div><div></div><div></div><div></div><div></div><div></div><div></div><div></div><div></div><div></div><div></div><div></div><div></div><div></div><div></div><div></div><div></div><div></div><div></div><div></div><div></div><div></div><div></div><div></div><div></div><div></div><div></div><div></div><div></div><div></div><div></div><div></div><div></div><div></div><div></div><div></div><div></div><div></div><div></div><div></div><div></div><div></div><div></div><div></div><div></div><div></div><div></div><div></div><div></div><div></div><div></div><div></div><div></div><div></div><div></div><div></div><div></div><div></div><div></div><div></div><div></div><div></div><div></div><div></div><div></div><div></div><div></div><div></div><div></div><div></div><div></div><div></div><div></div><div></div><div></div><div></div><div></div><div></div><div></div><div></div><div></div><div></div><div></div><div></div><div></div><div></div><div></div><div></div><div></div><div></div><div></div><div></div><div></div><div></div><div></div><div></div><div></div><div></div><div></div><div></div><div></div><div></div><div></div><div></div><div></div><div></div><div></div><div></div><div></div><div></div><div></div><div></div><div></div><div></div><div></div><div></div><div></div><div></div><div></div><div></div><div></div><div></div><div></div><div></div><div></div><div></div><div></div><div></div><div></div><div></div><div></div><div></div><div></div><div></div><div></div><div></div><div></div><div></div><div></div><div></div><div></div><div></div><div></div><div></div><div></div><div></div><div></div><div></div><div></div><div></div><div></div><div></div><div></div><div></div><div></div><div></div><div></div><div></div><div></div><div></div><div></div><div></div><div></div><div></div><div></div><div></div><div></div><div></div><div></div><div></div><div></div><div></div><div></div><div></div><div></div><div></div><div></div><div></div><div></div><div></div><div></div><div></div><div></div><div></div><div></div><div></div><div></div><div></div><div></div><div></div><div></div><div></div><div></div><div></div><div></div><div></div><div></div><div></div><div></div><div></div><div></div><div></div><div></div><div></div><div></div><div></div><div></div><div></div><div></div><div></div><div></div><div></div><div></div><div></div><div></div><div></div><div></div><div></div><div></div><div></div><div></div><div></div><div></div><div></div><div></div><div></div><div></div><div></div><div></div><div></div><div></div><div></div><div></div><div></div><div></div><div></div><div></div><div></div><div></div><div></div><div></div><div></div><div></div><div></div><div></div><div></div><div></div><div></div><div></div><div></div><div></div><div></div><div></div><div></div><div></div><div></div><div></div><div></div><div></div><div></div><div></div><div></div><div></div><div></div><div></div><div></div><div></div><div></div><div></div><div></div><div></div><div></div><div></div><div></div><div></div><div></div><div></div><div></div><div></div><div></div><div></div><div></div><div></div><div></div><div></div><div></div><div></div><div></div><div></div><div></div><div></div><div></div><div></div><div></div><div></div>&lt;</div></div>	
---	--



Dig Sites Area: ---- Line: ----

The quality and accuracy of any print will depend on your printer, your computer and its print settings. Measurements scaled from this plan may not match measurements between the same points on the ground.

This plan must be used with the attached 'Symbols' document.

Date Requested: 29/06/2020  
Job Reference: 19188670  
Site Location: 529480 182592  
Requested by: Mr Joe Shawyer

Your Scheme/Reference:  
URO6946.4FM  
Scale: 1:500 (When plotted at A4)

1. The position of the apparatus shown on this drawing is believed to be correct but the original landmarks may have been altered since the apparatus was installed.
2. The exact position of the apparatus should be verified - use approved cable avoidance tools prior to excavation using suitable hand tools.
3. It is essential that trial holes are carefully made avoiding the use of mechanical tools or picks until the exact location of all the cables have been determined.
4. It must be assumed that there is a service cable into each property, lamp column and street sign, etc.
5. All cables must be treated as being live unless proved otherwise by UK Power Networks.
6. The information provided must be given to all people working near UK Power Networks plant and equipment. Do not use plans more than 3 months after the issue date for excavation purposes.
7. Please be aware that electric cables/lines belonging to other owners of licensed electricity distribution systems may be present and it is your responsibility to identify their location.
8. Please be aware the Low Voltage Overhead power lines are not currently displayed for the Eastern Region via this service, if you require records on the location of these please contact our Plan Provision team directly via [plans@ukpowernetworks.co.uk](mailto:plans@ukpowernetworks.co.uk).

1. UK Power Networks does not warrant that the information provided to you is correct. You rely upon it at your own risk.
2. UK Power Networks does not exclude or limit its liability if it causes the death of any persons or causes personal injury to a person.
3. Subject to paragraph 2 UK Power Networks has no liability to you in contract, in tort (including negligence), for breach of statutory duty or otherwise for any loss, damage, cost, claims, demands, or expenses that you or any third party may suffer or incur as a result of using the information provided whether for physical damage to property or for any economic loss (including without limitation loss of profit, loss of opportunity, loss of savings, loss of goodwill, loss of business, loss of use) or any special or consequential loss or damage whatsoever.
4. This plan has been provided to you on the basis of the terms of use set out in the covering letter that accompanies this plan. If you do not accept and/or do not understand the terms of use set out in the covering letter you must not use the plan and must return it to the sender of the letter.
5. You are responsible for the security of the information provided to you. It must not be given, sold or made available upon payment of a fee to a third party.
6. Please Note: The Overview map does not display UK Power Networks electricity network and should not be used for the location of UK Power Networks assets. For detail of the electricity network please view the relevant page as highlighted in the Overview map.

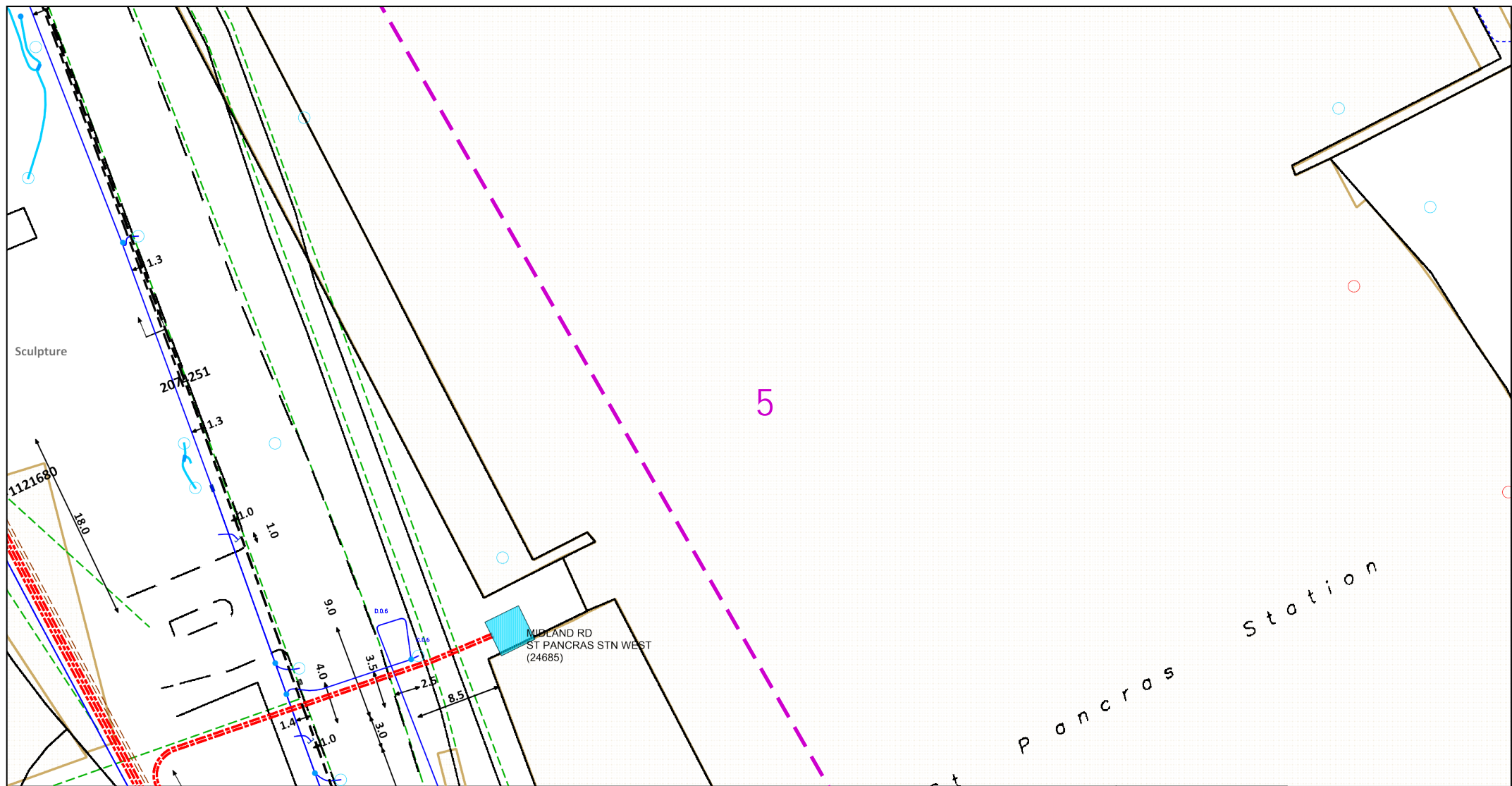


IF IN DOUBT - ASK! PHONE  
0800 056 5866  
EMERGENCY - If you damage a  
cable or line  
Phone 0800 783 8838 (24hrs)  
URGENTLY



ALWAYS LOOK UP  
BEFORE  
YOU START WORK  
Refer to HSE Guidance  
note GS6

Maps produced at 1:2500 scale are Geo-Schematics which show LV mains cables and overhead lines (in some cases all voltages). Prior to carrying out excavations you must refer to the 1:500 records to determine the location of all known underground plant and equipment.



The quality and accuracy of any print will depend on your printer, your computer and its print settings. Measurements scaled from this plan may not match measurements between the same points on the ground.

This plan must be used with the attached 'Symbols' document.

Date Requested: 29/06/2020

Job Reference: 19188670

Site Location: 529480 182592

Requested by: Mr Joe Shawyer

Your Scheme/Reference:

URO6946.4FM

Scale: 1:500 (When plotted at A4)

1. The position of the apparatus shown on this drawing is believed to be correct but the original landmarks may have been altered since the apparatus was installed.
2. The exact position of the apparatus should be verified - use approved cable avoidance tools prior to excavation using suitable hand tools.
3. It is essential that trial holes are carefully made avoiding the use of mechanical tools or picks until the exact location of all the cables have been determined.
4. It must be assumed that there is a service cable into each property, lamp column and street sign, etc.
5. All cables must be treated as being live unless proved otherwise by UK Power Networks.
6. The information provided must be given to all people working near UK Power Networks plant and equipment. Do not use plans more than 3 months after the issue date for excavation purposes.
7. Please be aware that electric cables/lines belonging to other owners of licensed electricity distribution systems may be present and it is your responsibility to identify their location.
8. Please be aware the Low Voltage Overhead power lines are not currently displayed for the Eastern Region via this service, if you require records on the location of these please contact our Plan Provision team directly via plans@ukpowernetworks.co.uk.

1. UK Power Networks does not warrant that the information provided to you is correct. You rely upon it at your own risk.
2. UK Power Networks does not exclude or limit its liability if it causes the death of any persons or causes personal injury to a person.
3. Subject to paragraph 2 UK Power Networks has no liability to you in contract, in tort (including negligence), for breach of statutory duty or otherwise for any loss, damage, cost, claims, demands, or expenses that you or any third party may suffer or incur as a result of using the information provided whether for physical damage to property or for any economic loss (including without limitation loss of profit, loss of opportunity, loss of savings, loss of goodwill, loss of business, loss of use) or any special or consequential loss or damage whatsoever.
4. This plan has been provided to you on the basis of the terms of use set out in the covering letter that accompanies this plan. If you do not accept and/or do not understand the terms of use set out in the covering letter you must not use the plan and must return it to the sender of the letter.
5. You are responsible for the security of the information provided to you. It must not be given, sold or made available upon payment of a fee to a third party.
6. Please Note: The Overview map does not display UK Power Networks electricity network and should not be used for the location of UK Power Networks assets. For detail of the electricity network please view the relevant page as highlighted in the Overview map.



IF IN DOUBT - ASK! PHONE  
0800 056 5866  
EMERGENCY - If you damage a  
cable or line  
Phone 0800 783 8838 (24hrs)  
URGENTLY



ALWAYS LOOK UP  
BEFORE  
YOU START WORK  
Refer to HSE Guidance  
note GS6

Maps produced at 1:2500 scale are Geo-Schematics which show LV mains cables and overhead lines (in some cases all voltages). Prior to carrying out excavations you must refer to the 1:500 records to determine the location of all known underground plant and equipment.