

<p>0 12.5 25 metres</p>	<p>Dig Sites Area: Line:</p>	<p>The quality and accuracy of any print will depend on your printer, your computer and its print settings. Measurements scaled from this plan may not match measurements between the same points on the ground.</p>	<p>UK Power Networks</p>
<p>This plan must be used with the attached 'Symbols' document.</p> <p>Date Requested: 29/06/2020</p> <p>Job Reference: 19188670</p> <p>Site Location: 529480 182592</p> <p>Requested by: Mr Joe Shawyer</p> <p>Your Scheme/Reference: URO6946.4FM</p> <p>Scale: 1:500 (When plotted at A4)</p>	<p>1. The position of the apparatus shown on this drawing is believed to be correct but the original landmarks may have been altered since the apparatus was installed.</p> <p>2. The exact position of the apparatus should be verified - use approved cable avoidance tools prior to excavation using suitable hand tools.</p> <p>3. It is essential that trial holes are carefully made avoiding the use of mechanical tools or picks until the exact location of all the cables have been determined.</p> <p>4. It must be assumed that there is a service cable into each property, lamp column and street sign, etc.</p> <p>5. All cables must be treated as being live unless proved otherwise by UK Power Networks.</p> <p>6. The information provided must be given to all people working near UK Power Networks plant and equipment. Do not use plans more than 3 months after the issue date for excavation purposes.</p> <p>7. Please be aware that electric cables/lines belonging to other owners of licensed electricity distribution systems may be present and it is your responsibility to identify their location.</p> <p>8. Please be aware the Low Voltage Overhead power lines are not currently displayed for the Eastern Region via this service, if you require records on the location of these please contact our Plan Provision team directly via plans@ukpowernetworks.co.uk.</p>	<p>1. UK Power Networks does not warrant that the information provided to you is correct. You rely upon it at your own risk.</p> <p>2. UK Power Networks does not exclude or limit its liability if it causes the death of any persons or causes personal injury to a person.</p> <p>3. Subject to paragraph 2 UK Power Networks has no liability to you in contract, in tort (including negligence), for breach of statutory duty or otherwise for any loss, damage, cost, claims, demands, or expenses that you or any third party may suffer or incur as a result of using the information provided whether for physical damage to property or for any economic loss (including without limitation loss of profit, loss of opportunity, loss of savings, loss of goodwill, loss of business, loss of use) or any special or consequential loss or damage whatsoever.</p> <p>4. This plan has been provided to you on the basis of the terms of use set out in the covering letter that accompanies this plan. If you do not accept and/or do not understand the terms of use set out in the covering letter you must not use the plan and must return it to the sender of the letter.</p> <p>5. You are responsible for the security of the information provided to you. It must not be given, sold or made available upon payment of a fee to a third party.</p> <p>6. Please Note: The Overview map does not display UK Power Networks electricity network and should not be used for the location of UK Power Networks assets. For detail of the electricity network please view the relevant page as highlighted in the Overview map.</p>	<p>IF IN DOUBT - ASK! PHONE 0800 056 5866</p> <p>EMERGENCY - If you damage a cable or line Phone 0800 783 8838 (24hrs) URGENTLY</p> <p>ALWAYS LOOK UP BEFORE YOU START WORK Refer to HSE Guidance note GS6</p> <p>Maps produced at 1:2500 scale are Geo-Schematics which show LV mains cables and overhead lines (in some cases all voltages). Prior to carrying out excavations you must refer to the 1:500 records to determine the location of all known underground plant and equipment.</p> <p>Reproduced by permission of Ordnance Survey on behalf of HMSO. © Crown copyright and database rights 2020. All rights reserved. Ordnance Survey Licence numbers 100019626, 100019826 and 100019450. Data has been added to the Ordnance Survey base map; all proprietary rights in such additional data are and shall remain the exclusive property of © London Power Networks plc or Eastern Power Networks plc or South Eastern Power Networks plc each being a distribution licensee under section 6(1)(c) of the Electricity Act 1989 for the relevant distribution services area as that term is defined in such licensee's distribution licence. All rights in such data reserved. Plans generated by DigSAFE Pro™ software provided by LinesearchbeforeUdig.</p>

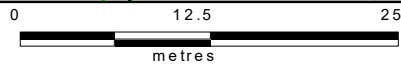
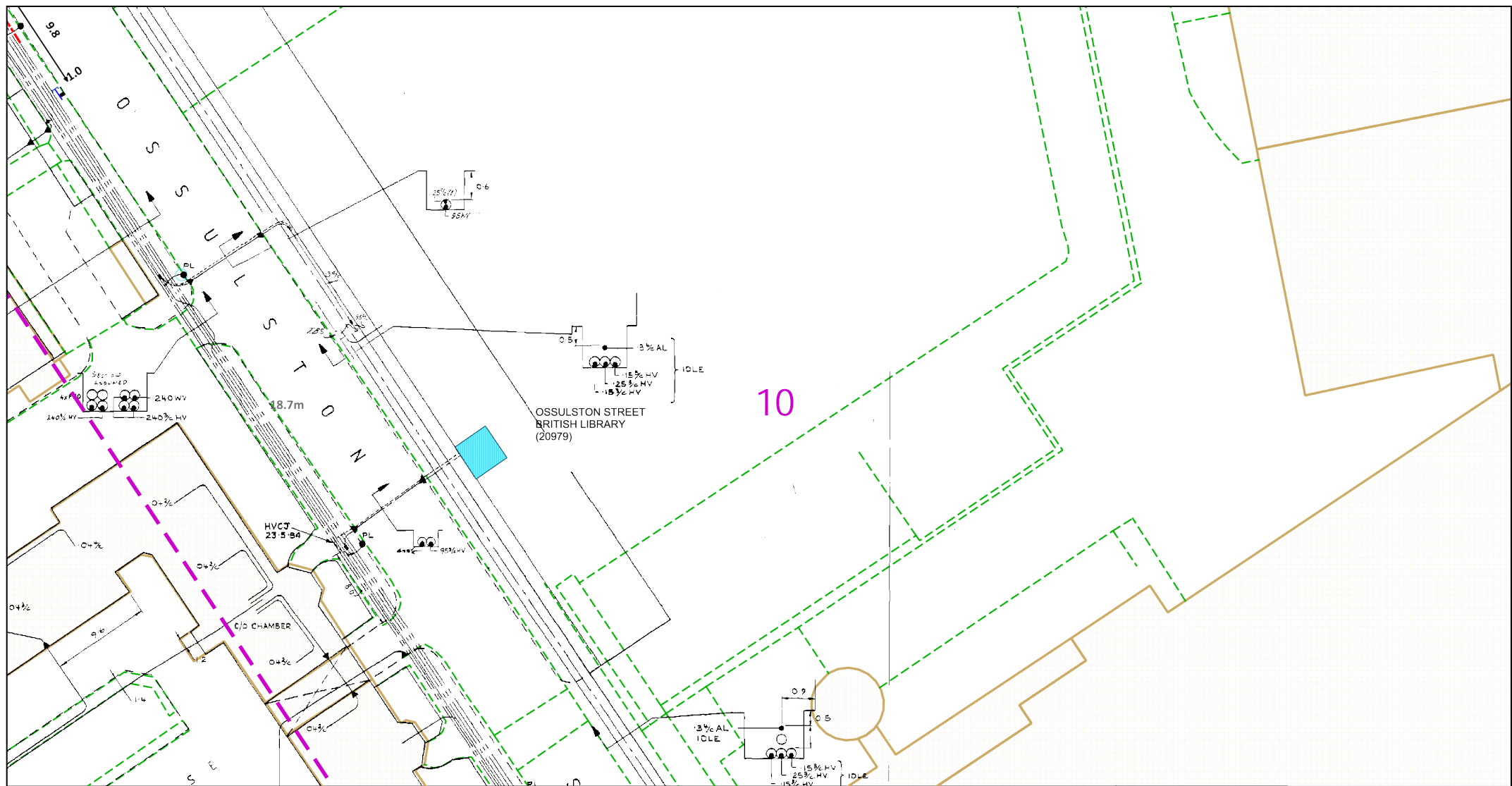












Dig Sites Area: --- Line: ---

The quality and accuracy of any print will depend on your printer, your computer and its print settings. Measurements scaled from this plan may not match measurements between the same points on the ground.

This plan must be used with the attached 'Symbols' document.

Date Requested: 29/06/2020

Job Reference: 19188670

Site Location: 529480 182592

Requested by: Mr Joe Shawyer

Your Scheme/Reference:

URO6946.4FM

Scale: 1:500 (When plotted at A4)

1. The position of the apparatus shown on this drawing is believed to be correct but the original landmarks may have been altered since the apparatus was installed.
2. The exact position of the apparatus should be verified - use approved cable avoidance tools prior to excavation using suitable hand tools.
3. It is essential that trial holes are carefully made avoiding the use of mechanical tools or picks until the exact location of all the cables have been determined.
4. It must be assumed that there is a service cable into each property, lamp column and street sign, etc.
5. All cables must be treated as being live unless proved otherwise by UK Power Networks.
6. The information proved must be given to all people working near UK Power Networks plant and equipment. Do not use plans more than 3 months after the issue date for excavation purposes.
7. Please be aware that electric cables/lines belonging to other owners of licensed electricity distribution systems may be present and it is your responsibility to identify their location.
8. Please be aware the Low Voltage Overhead power lines are not currently displayed for the Eastern Region via this service, if you require records on the location of these please contact our Plan Provision team directly via [plans@ukpowernetworks.co.uk](mailto:plans@ukpowernetworks.co.uk).

1. UK Power Networks does not warrant that the information provided to you is correct. You rely upon it at your own risk.
2. UK Power Networks does not exclude or limit its liability if it causes the death of any persons or causes personal injury to a person.
3. Subject to paragraph 2 UK Power Networks has no liability to you in contract, in tort (including negligence), for breach of statutory duty or otherwise for any loss, damage, cost, claims, demands, or expenses that you or any third party may suffer or incur as a result of using the information provided whether for physical damage to property or for any economic loss (including without limitation loss of profit, loss of opportunity, loss of savings, loss of goodwill, loss of business, loss of use) or any special or consequential loss or damage whatsoever.
4. This plan has been provided to you on the basis of the terms of use set out in the covering letter that accompanies this plan. If you do not accept and/or do not understand the terms of use set out in the covering letter you must not use the plan and must return it to the sender of the letter.
5. You are responsible for the security of the information provided to you. It must not be given, sold or made available upon payment of a fee to a third party.
6. Please Note: The Overview map does not display UK Power Networks electricity network and should not be used for the location of UK Power Networks assets. For detail of the electricity network please view the relevant page as highlighted in the Overview map.

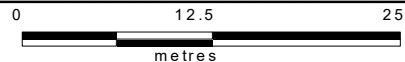
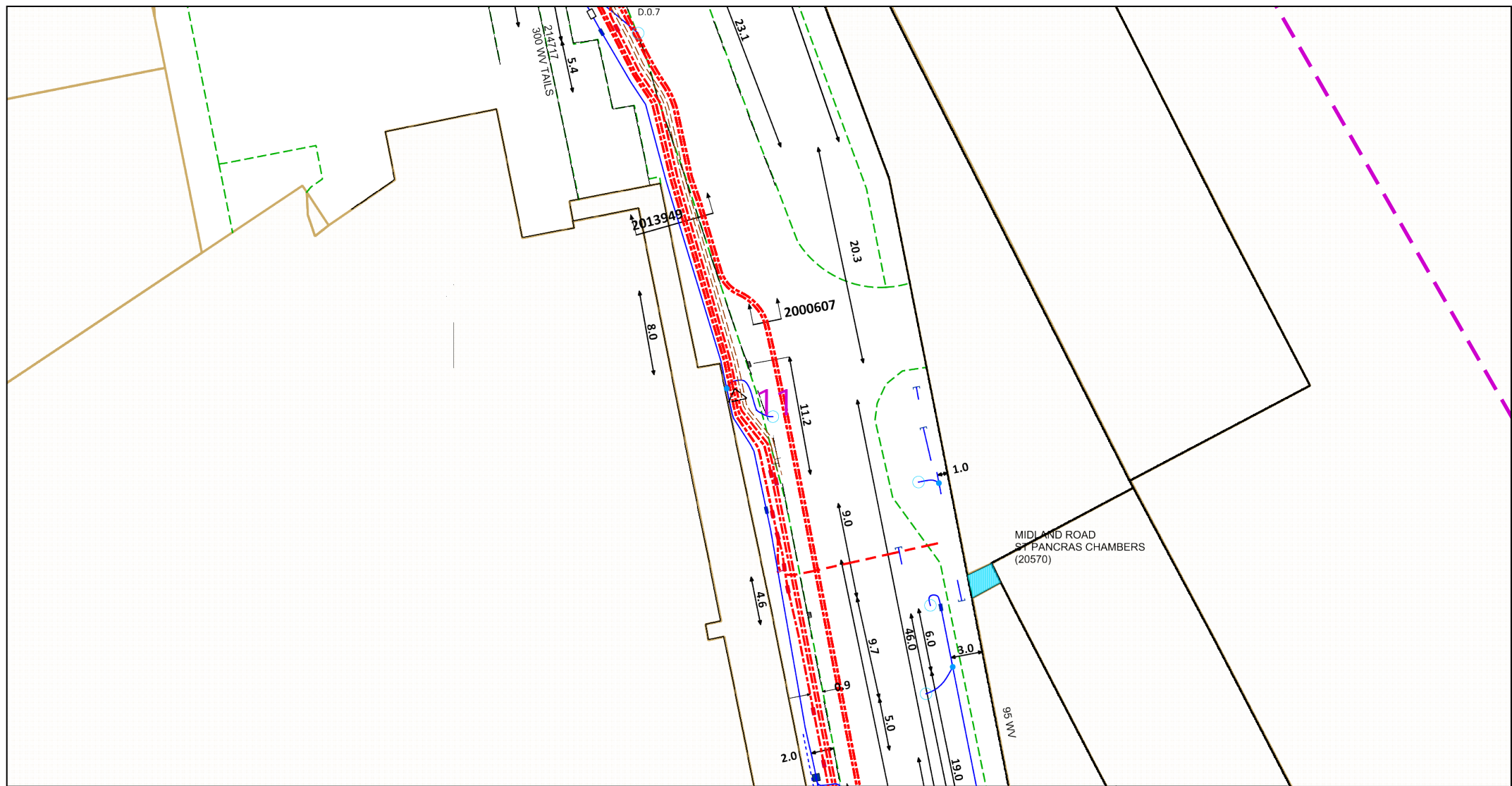


IF IN DOUBT - ASK! PHONE  
0800 056 5866  
EMERGENCY - If you damage a  
cable or line  
Phone 0800 783 8838 (24hrs)  
URGENTLY



ALWAYS LOOK UP  
BEFORE  
YOU START WORK  
Refer to HSE Guidance  
note GS6

Maps produced at 1:2500 scale are Geo-Schematics which show LV mains cables and overhead lines (in some cases all voltages). Prior to carrying out excavations you must refer to the 1:500 records to determine the location of all known underground plant and equipment.



Dig Sites Area:  Line: 

The quality and accuracy of any print will depend on your printer, your computer and its print settings. Measurements scaled from this plan may not match measurements between the same points on the ground.



This plan must be used with the attached 'Symbols' document.

Date Requested: 29/06/2020  
Job Reference: 19188670  
Site Location: 529480 182592  
Requested by: Mr Joe Shawry

Your Scheme/Reference:  
URO6946.4FM  
Scale: 1:500 (When plotted at A4)

1. The position of the apparatus shown on this drawing is believed to be correct but the original landmarks may have been altered since the apparatus was installed.
2. The exact position of the apparatus should be verified - use approved cable avoidance tools prior to excavation using suitable hand tools.
3. It is essential that trial holes are carefully made avoiding the use of mechanical tools or picks until the exact location of all the cables have been determined.
4. It must be assumed that there is a service cable into each property, lamp column and street sign, etc.
5. All cables must be treated as being live unless proved otherwise by UK Power Networks.
6. The information provided must be given to all people working near UK Power Networks plant and equipment. Do not use plans more than 3 months after the issue date for excavation purposes.
7. Please be aware that electric cables/lines belonging to other owners of licensed electricity distribution systems may be present and it is your responsibility to identify their location.
8. Please be aware the Low Voltage Overhead power lines are not currently displayed for the Eastern Region via this service, if you require records on the location of these please contact our Plan Provision team directly via plans@ukpowernetworks.co.uk.

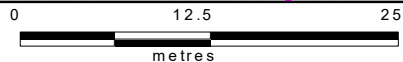
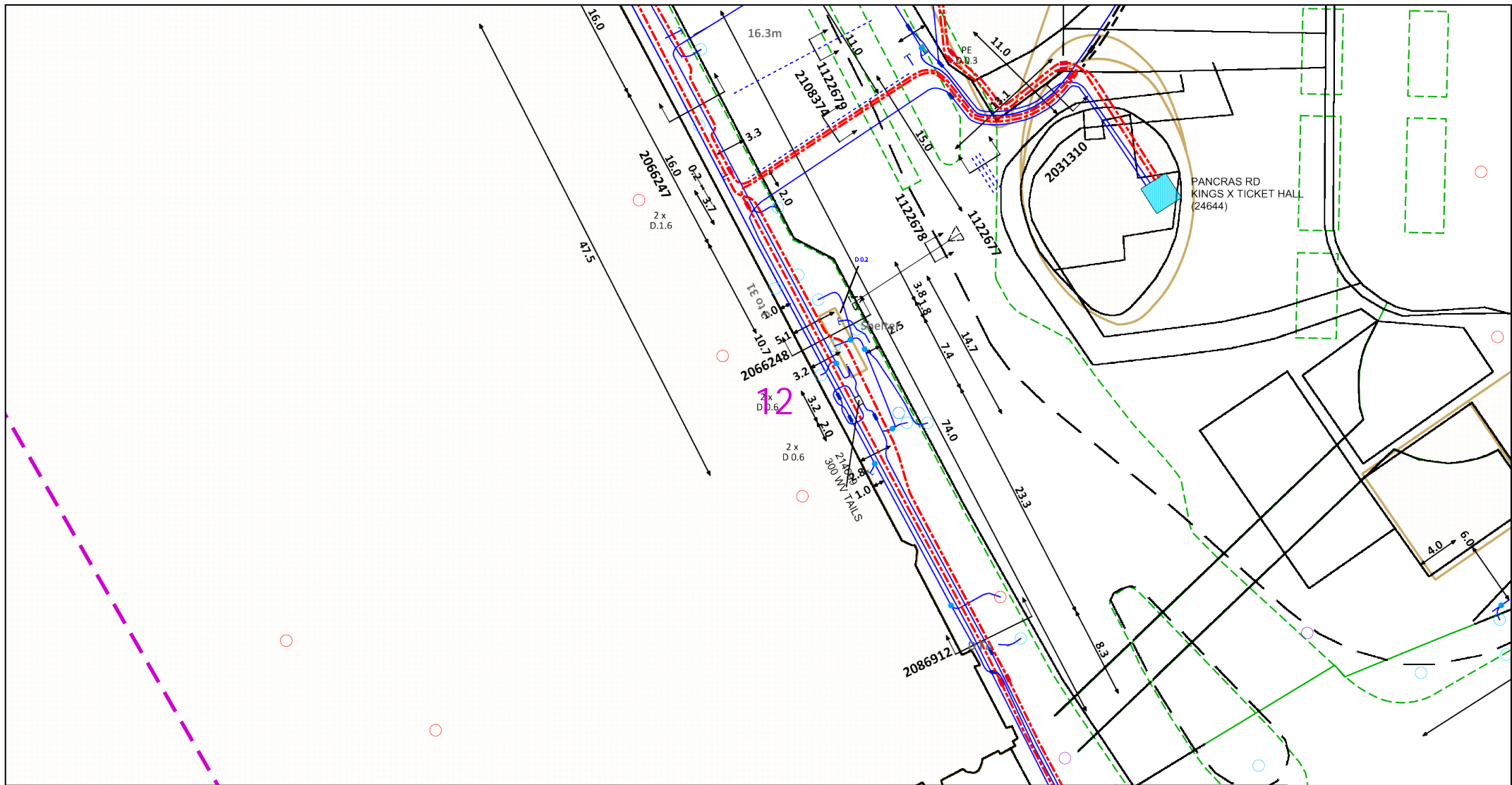
1. UK Power Networks does not warrant that the information provided to you is correct. You rely upon it at your own risk.
2. UK Power Networks does not exclude or limit its liability if it causes the death of any persons or causes personal injury to a person.
3. Subject to paragraph 2 UK Power Networks has no liability to you in contract, in tort (including negligence), for breach of statutory duty or otherwise for any loss, damage, cost, claims, demands, or expenses that you or any third party may suffer or incur as a result of using the information provided whether for physical damage to property or for any economic loss (including without limitation loss of profit, loss of opportunity, loss of savings, loss of goodwill, loss of business, loss of use) or any special or consequential loss or damage whatsoever.
4. This plan has been provided to you on the basis of the terms of use set out in the covering letter that accompanies this plan. If you do not accept and/or do not understand the terms of use set out in the covering letter you must not use the plan and must return it to the sender of the letter.
5. You are responsible for the security of the information provided to you. It must not be given, sold or made available upon payment of a fee to a third party.
6. Please Note: The Overview map does not display UK Power Networks electricity network and should not be used for the location of UK Power Networks assets. For detail of the electricity network please view the relevant page as highlighted in the Overview map.

IF IN DOUBT - ASK! PHONE  
0800 056 5866  
EMERGENCY - If you damage a  
cable or line  
Phone 0800 783 8838 (24hrs)  
URGENTLY



ALWAYS LOOK UP  
BEFORE  
YOU START WORK  
Refer to HSE Guidance  
note GS6

Maps produced at 1:2500 scale are Geo-Schematics which show LV mains cables and overhead lines (in some cases all voltages). Prior to carrying out excavations you must refer to the 1:500 records to determine the location of all known underground plant and equipment.



Dig Sites Area:  Line: 

The quality and accuracy of any print will depend on your printer, your computer and its print settings. Measurements scaled from this plan may not match measurements between the same points on the ground.



This plan must be used with the attached 'Symbols' document.

Date Requested: 29/06/2020  
Job Reference: 19188670  
Site Location: 529480 182592  
Requested by: Mr Joe Shawyer

Your Scheme/Reference:  
URO6946.4FM  
Scale: 1:500 (When plotted at A4)

1. The position of the apparatus shown on this drawing is believed to be correct but the original landmarks may have been altered since the apparatus was installed.
2. The exact position of the apparatus should be verified - use approved cable avoidance tools prior to excavation using suitable hand tools.
3. It is essential that trial holes are carefully made avoiding the use of mechanical tools or picks until the exact location of all the cables have been determined.
4. It must be assumed that there is a service cable into each property, lamp column and street sign, etc.
5. All cables must be treated as being live unless proved otherwise by UK Power Networks.
6. The information proved must be given to all people working near UK Power Networks plant and equipment. Do not use plans more than 3 months after the issue date for excavation purposes.
7. Please be aware that electric cables/lines belonging to other owners of licensed electricity distribution systems may be present and it is your responsibility to identify their location.
8. Please be aware the Low Voltage Overhead power lines are not currently displayed for the Eastern Region via this service, if you require records on the location of these please contact our Plan Provision team directly via [plans@ukpowernetworks.co.uk](mailto:plans@ukpowernetworks.co.uk).

1. UK Power Networks does not warrant that the information provided to you is correct. You rely upon it at your own risk.
2. UK Power Networks does not exclude or limit its liability if it causes the death of any persons or causes personal injury to a person.
3. Subject to paragraph 2 UK Power Networks has no liability to you in contract, in tort (including negligence), for breach of statutory duty or otherwise for any loss, damage, cost, claims, demands, or expenses that you or any third party may suffer or incur as a result of using the information provided whether for physical damage to property or for any economic loss (including without limitation loss of profit, loss of opportunity, loss of savings, loss of goodwill, loss of business, loss of use) or any special or consequential loss or damage whatsoever.
4. This plan has been provided to you on the basis of the terms of use set out in the covering letter that accompanies this plan. If you do not accept and/or do not understand the terms of use set out in the covering letter you must not use the plan and must return it to the sender of the letter.
5. You are responsible for the security of the information provided to you. It must not be given, sold or made available upon payment of a fee to a third party.
6. Please Note: The Overview map does not display UK Power Networks electricity network and should not be used for the location of UK Power Networks assets. For detail of the electricity network please view the relevant page as highlighted in the Overview map.

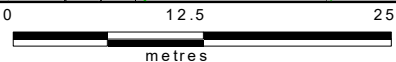
IF IN DOUBT - ASK! PHONE  
0800 056 5866  
EMERGENCY - If you damage a  
cable or line  
Phone 0800 783 8838 (24hrs)  
URGENTLY



ALWAYS LOOK UP  
BEFORE  
YOU START WORK  
Refer to HSE Guidance  
note GS6

Maps produced at 1:2500 scale are Geo-Schematics which show LV mains cables and overhead lines (in some cases all voltages). Prior to carrying out excavations you must refer to the 1:500 records to determine the location of all known underground plant and equipment.





Dig Sites    Area:     Line: 

The quality and accuracy of any print will depend on your printer, your computer and its print settings. Measurements scaled from this plan may not match measurements between the same points on the ground.



This plan must be used with the attached 'Symbols' document.

Date Requested: 29/06/2020  
Job Reference: 19188670  
Site Location: 529480 182592  
Requested by: Mr Joe Shawyer

Your Scheme/Reference:  
URO6946.4FM  
Scale: 1:500 (When plotted at A4)

1. The position of the apparatus shown on this drawing is believed to be correct but the original landmarks may have been altered since the apparatus was installed.
2. The exact position of the apparatus should be verified - use current cable avoidance tools prior to excavation using suitable hand tools.
3. It is essential that trial holes are carefully made avoiding the use of mechanical tools or picks until the exact location of all the cables have been determined.
4. It must be assumed that there is a service cable into each property, lamp column and street sign, etc.
5. All cables must be treated as being live unless proved otherwise by UK Power Networks.
6. The information proved must be given to all people working near UK Power Networks plant and equipment. Do not use plans more than 3 months after the issue date for excavation purposes.
7. Please be aware that electric cables/lines belonging to other owners of licensed electricity distribution systems may be present and it is your responsibility to identify their location.
8. If you are in the Eastern head power lines are not currently displayed for the Eastern Region via this service, if you require records on the location of these please contact our Plan Provision team directly via [plans@ukpowernetworks.co.uk](mailto:plans@ukpowernetworks.co.uk).

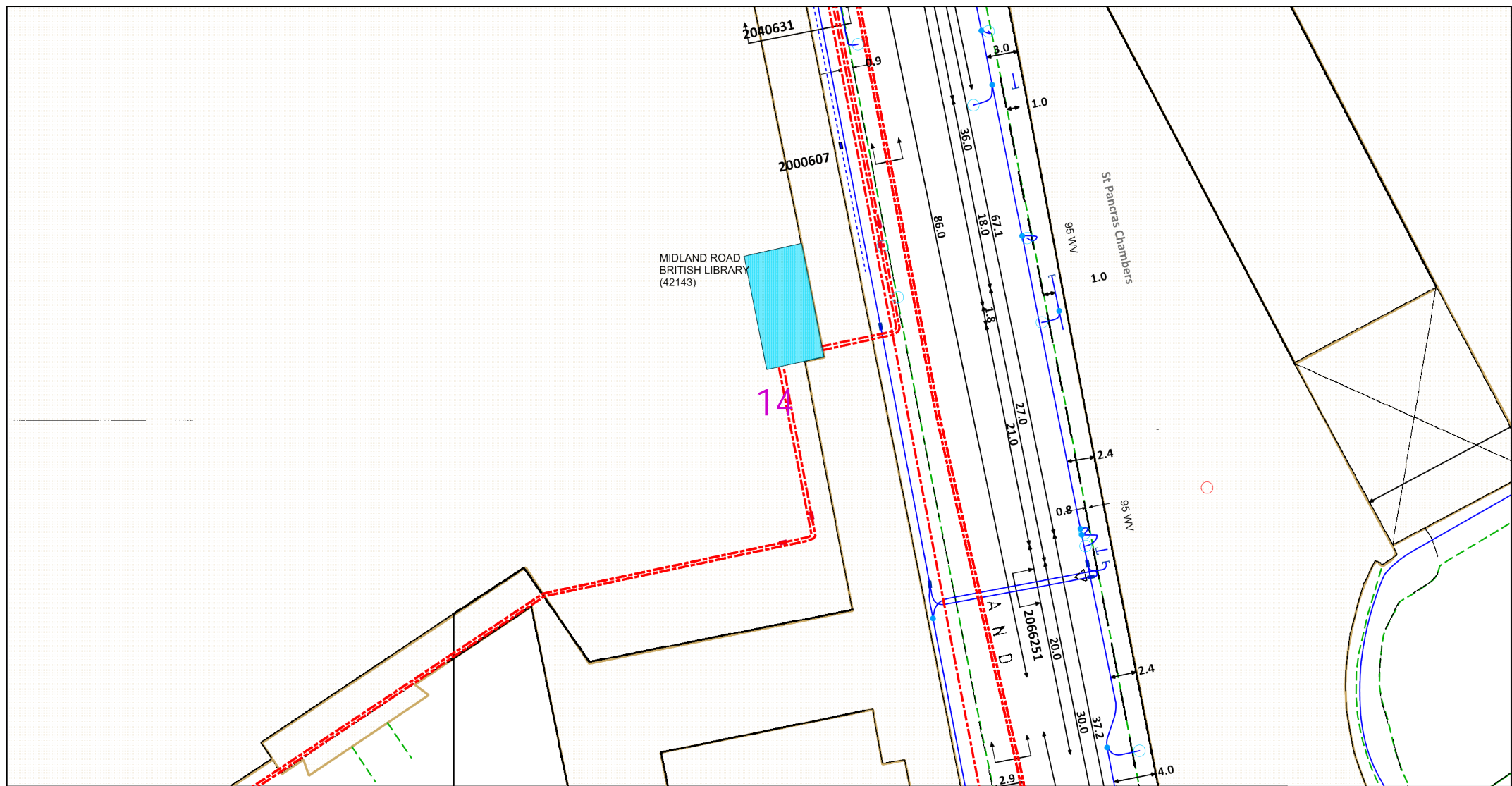
1. UK Power Networks does not warrant that the information provided to you is correct. You rely upon it at your own risk.
2. UK Power Networks does not exclude or limit its liability if it causes the death of any persons or causes personal injury to a person.
3. Subject to paragraph 2 UK Power Networks has no liability to you in contract, in tort (including negligence), for breach of statutory duty or otherwise for any loss, damage, cost, claims, demands, or expenses that you or any third party may suffer or incur as a result of using the information provided whether for physical damage to property or for any economic loss (including without limitation loss of profit, loss of opportunity, loss of savings, loss of goodwill, loss of business, loss of use) or any special or consequential loss or damage whatsoever.
4. This plan has been provided to you on the basis of the terms of use set out in the covering letter that accompanies this plan. If you do not accept and/or do not understand the terms of use set out in the covering letter you must not use the plan and must return it to the sender of the letter.
5. You may also pay for the use of the information provided to you. It must not be given, sold or made available upon payment of a fee to a third party.
6. Please Note: The Overview map does not display UK Power Networks electricity network and should not be used for the location of UK Power Networks assets. For detail of the electricity network please view the relevant page as highlighted in the Overview map.

IF IN DOUBT - ASK! PHONE  
0800 056 5866  
EMERGENCY - If you damage a  
cable or line  
Phone 0800 783 8838 (24hrs)  
URGENTLY



ALWAYS LOOK UP  
BEFORE  
YOU START WORK  
Refer to HSE Guidance  
note GS6

Maps produced at 1:2500 scale are Geo-Schematics which show LV mains cables and overhead lines (in some cases all voltages). Prior to carrying out excavations you must refer to the 1:500 records to determine the location of all known underground plant and equipment.



0 12.5 25  
metres

Dig Sites Area: Line:

The quality and accuracy of any print will depend on your printer, your computer and its print settings. Measurements scaled from this plan may not match measurements between the same points on the ground.

This plan must be used with the attached 'Symbols' document.

Date Requested: 29/06/2020  
Job Reference: 19188670  
Site Location: 529480 182592  
Requested by: Mr Joe Shawyer

Your Scheme/Reference:  
URO6946.4FM  
Scale: 1:500 (When plotted at A4)

1. The position of the apparatus shown on this drawing is believed to be correct but the original landmarks may have been altered since the apparatus was installed.
2. The exact position of the apparatus should be verified - use approved cable avoidance tools prior to excavation using suitable hand tools.
3. It is essential that trial holes are carefully made avoiding the use of mechanical tools or picks until the exact location of all the cables have been determined.
4. It must be assumed that there is a service cable into each property, lamp column and street sign, etc.
5. All cables must be treated as being live unless proved otherwise by UK Power Networks.
6. The information provided must be given to all people working near UK Power Networks plant and equipment. Do not use plans more than 3 months after the issue date for excavation purposes.
7. Please be aware that electric cables/lines belonging to other owners of licensed electricity distribution systems may be present and it is your responsibility to identify their location.
8. Please be aware the Low Voltage Overhead power lines are not currently displayed for the Eastern Region via this service, if you require records on the location of these please contact our Plan Provision team directly via plans@ukpowernetworks.co.uk.

1. UK Power Networks does not warrant that the information provided to you is correct. You rely upon it at your own risk.
2. UK Power Networks does not exclude or limit its liability if it causes the death of any persons or causes personal injury to a person.
3. Subject to paragraph 2 UK Power Networks has no liability to you in contract, in tort (including negligence), for breach of statutory duty or otherwise for any loss, damage, cost, claims, demands, or expenses that you or any third party may suffer or incur as a result of using the information provided whether for physical damage to property or for any economic loss (including without limitation loss of profit, loss of opportunity, loss of savings, loss of goodwill, loss of business, loss of use) or any special or consequential loss or damage whatsoever.
4. This plan has been provided to you on the basis of the terms of use set out in the covering letter that accompanies this plan. If you do not accept and/or do not understand the terms of use set out in the covering letter you must not use the plan and must return it to the sender of the letter.
5. You are responsible for the security of the information provided to you. It must not be given, sold or made available upon payment of a fee to a third party.
6. Please Note: The Overview map does not display UK Power Networks electricity network and should not be used for the location of UK Power Networks assets. For detail of the electricity network please view the relevant page as highlighted in the Overview map.



IF IN DOUBT - ASK! PHONE  
0800 056 5866  
EMERGENCY - If you damage a  
cable or line  
Phone 0800 783 8838 (24hrs)  
URGENTLY



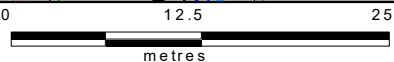
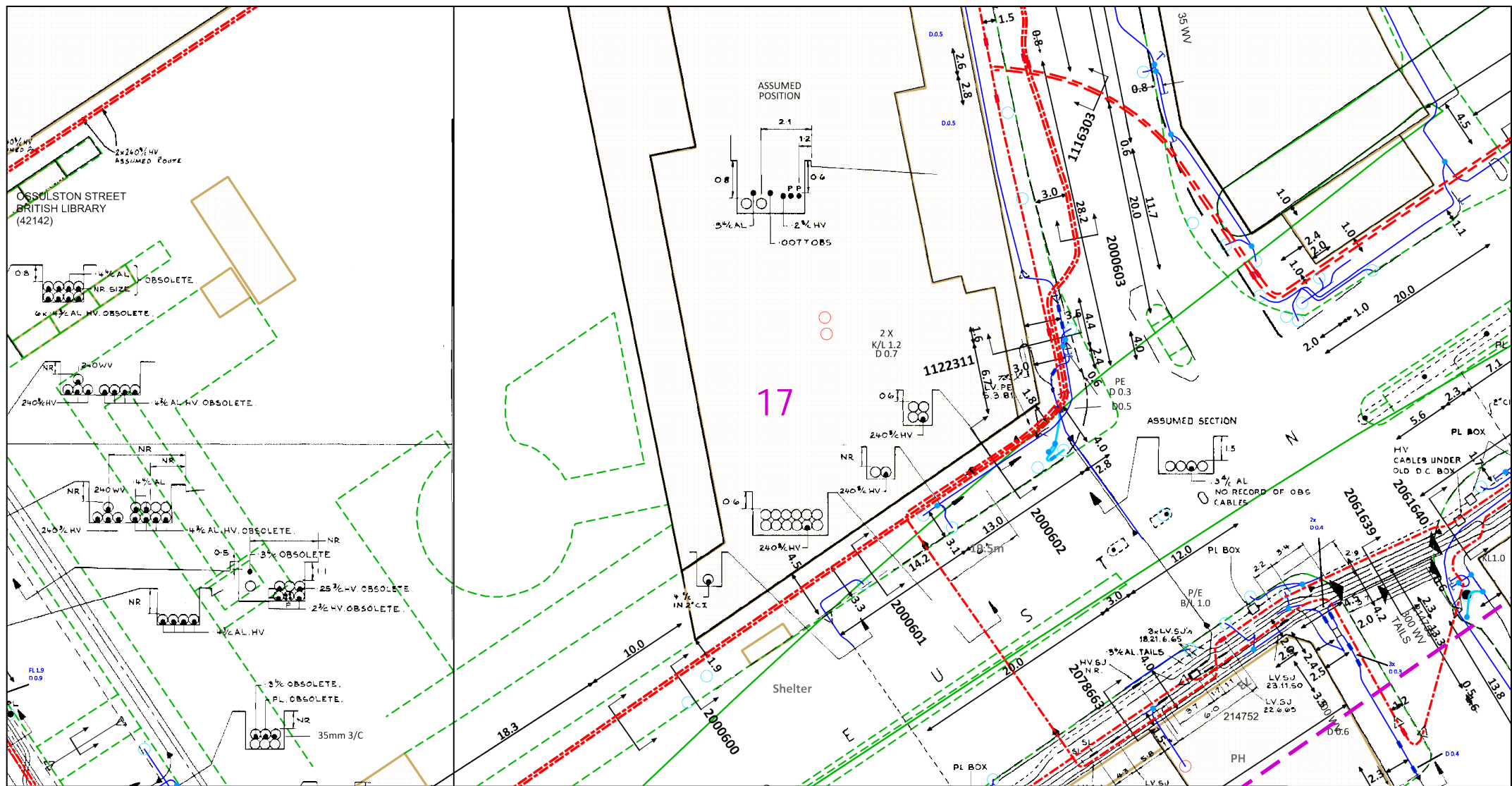
ALWAYS LOOK UP  
BEFORE  
YOU START WORK  
Refer to HSE Guidance  
note GS6

Maps produced at 1:2500 scale are Geo-Schematics which show LV mains cables and overhead lines (in some cases all voltages). Prior to carrying out excavations you must refer to the 1:500 records to determine the location of all known underground plant and equipment.









Dig Sites Area: ---- Line: ----

The quality and accuracy of any print will depend on your printer, your computer and its print settings. Measurements scaled from this plan may not match measurements between the same points on the ground.

This plan must be used with the attached 'Symbols' document.

Date Requested: 29/06/2020

Job Reference: 19188670

Site Location: 529480 182592

Requested by: Mr Joe Shawyer

Your Scheme/Reference:

URO6946.4FM

Scale: 1:500 (When plotted at A4)

1. The position of the apparatus shown on this drawing is believed to be correct but the original landmarks may have been altered since the apparatus was installed.
2. The exact position of the apparatus should be verified - use approved cable avoidance tools prior to excavation using suitable hand tools.
3. It is essential that trial holes are carefully made avoiding the use of mechanical tools or picks until the exact location of all the cables have been determined.
4. It must be assumed that there is a service cable into each property, lamp column and street sign, etc.
5. All cables must be treated as being live unless proved otherwise by UK Power Networks.
6. The information proved must be given to all people working near UK Power Networks plant and equipment. Do not use plans more than 3 months after the issue date for excavation purposes.
7. Please be aware that electric cables/lines belonging to other owners of licensed electricity distribution systems may be present and it is your responsibility to identify their location.
8. Please be aware the Low Voltage Overhead power lines are not currently displayed for the Eastern Region via this service, if you require records on the location of these please contact our Plan Provision team directly via [plans@ukpowernetworks.co.uk](mailto:plans@ukpowernetworks.co.uk).

1. UK Power Networks does not warrant that the information provided to you is correct. You rely upon it at your own risk.
2. UK Power Networks does not exclude or limit its liability if it causes the death of any persons or causes personal injury to a person.
3. Subject to paragraph 2 UK Power Networks has no liability to you in contract, in tort (including negligence), for breach of statutory duty or otherwise for any loss, damage, cost, claims, demands, or expenses that you or any third party may suffer or incur as a result of using the information provided whether for physical damage to property or for any economic loss (including without limitation loss of profit, loss of opportunity, loss of savings, loss of goodwill, loss of business, loss of use) or any special or consequential loss or damage whatsoever.
4. This plan has been provided to you on the basis of the terms of use set out in the covering letter that accompanies this plan. If you do not accept and/or do not understand the terms of use set out in the covering letter you must not use the plan and must return it to the sender of the letter.
5. You are responsible for the security of the information provided to you. It must not be given, sold or made available upon payment of a fee to a third party.
6. Please Note: The Overview map does not display UK Power Networks electricity network and should not be used for the location of UK Power Networks assets. For detail of the electricity network please view the relevant page as highlighted in the Overview map.



IF IN DOUBT - ASK! PHONE  
0800 056 5866  
EMERGENCY - If you damage a  
cable or line  
Phone 0800 783 8838 (24hrs)  
URGENTLY



ALWAYS LOOK UP  
BEFORE  
YOU START WORK  
Refer to HSE Guidance  
note GS6

Maps produced at 1:2500 scale are Geo-Schematics which show LV mains cables and overhead lines (in some cases all voltages). Prior to carrying out excavations you must refer to the 1:500 records to determine the location of all known underground plant and equipment.



