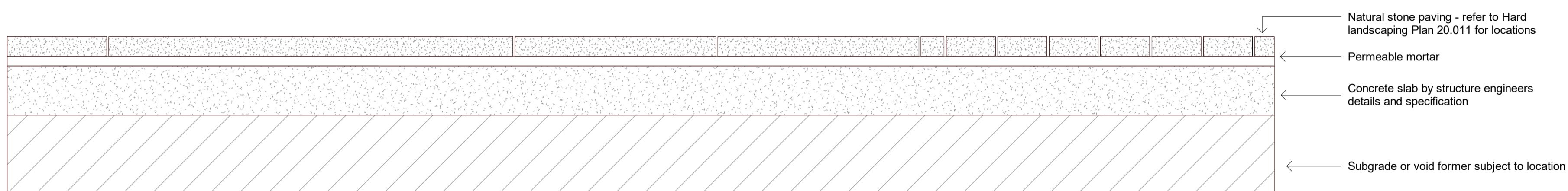
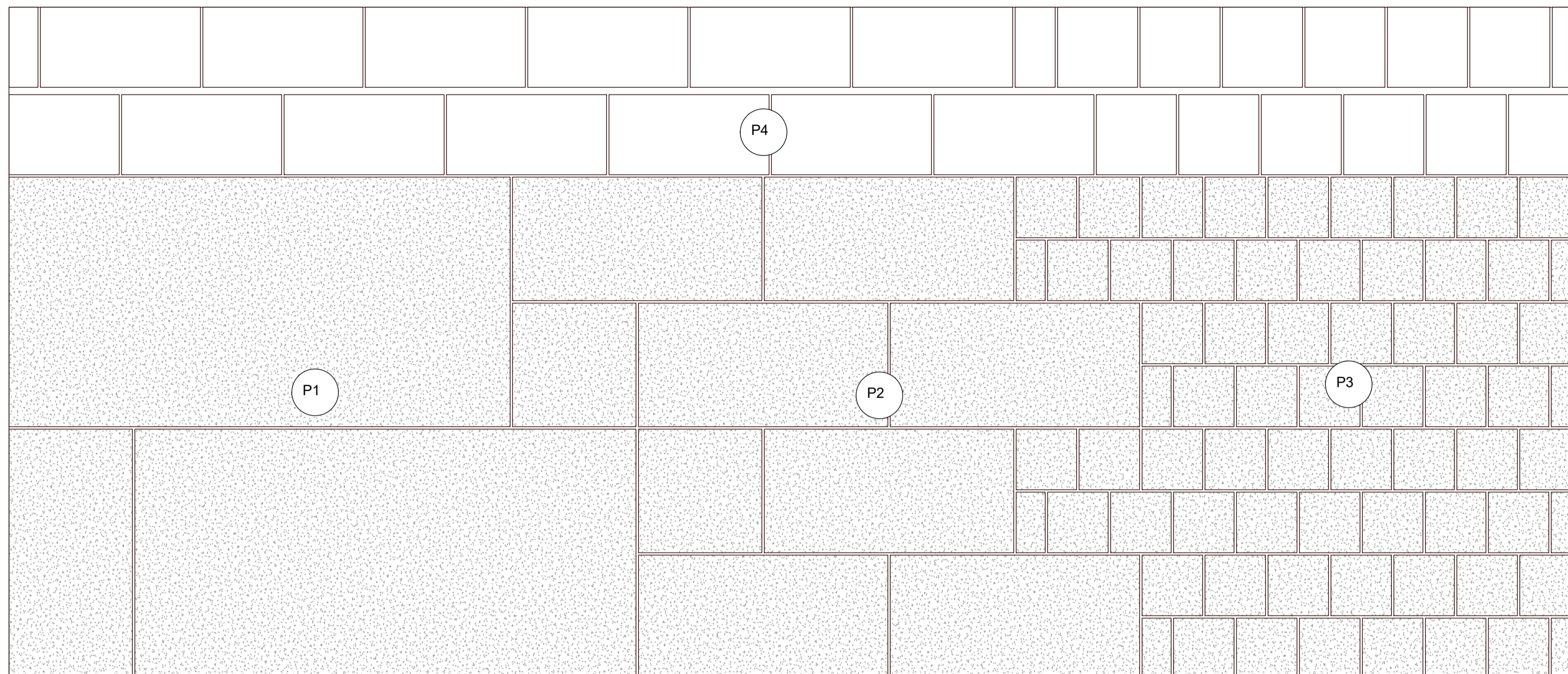
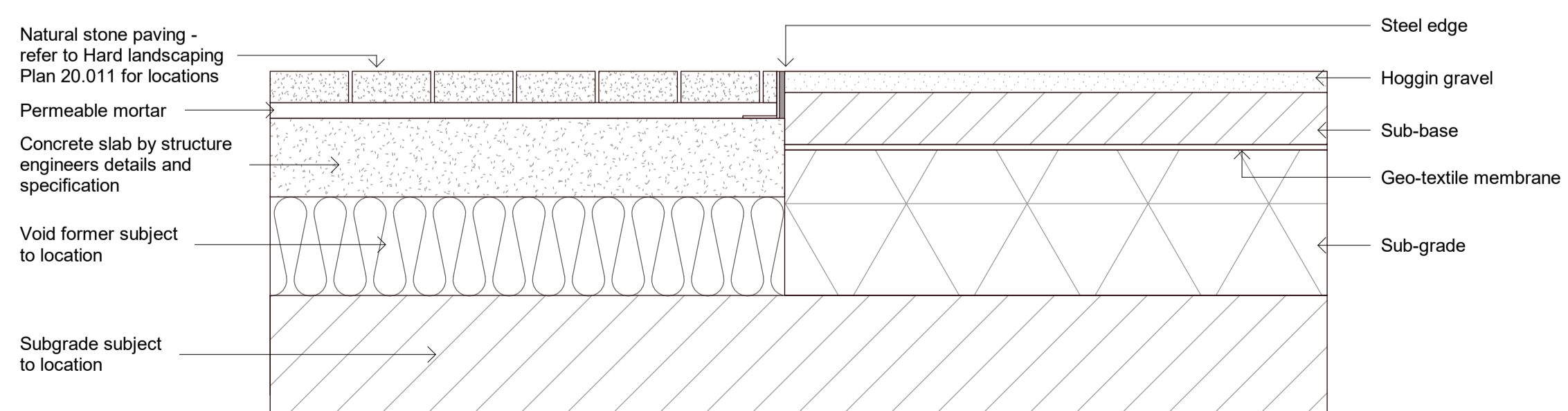
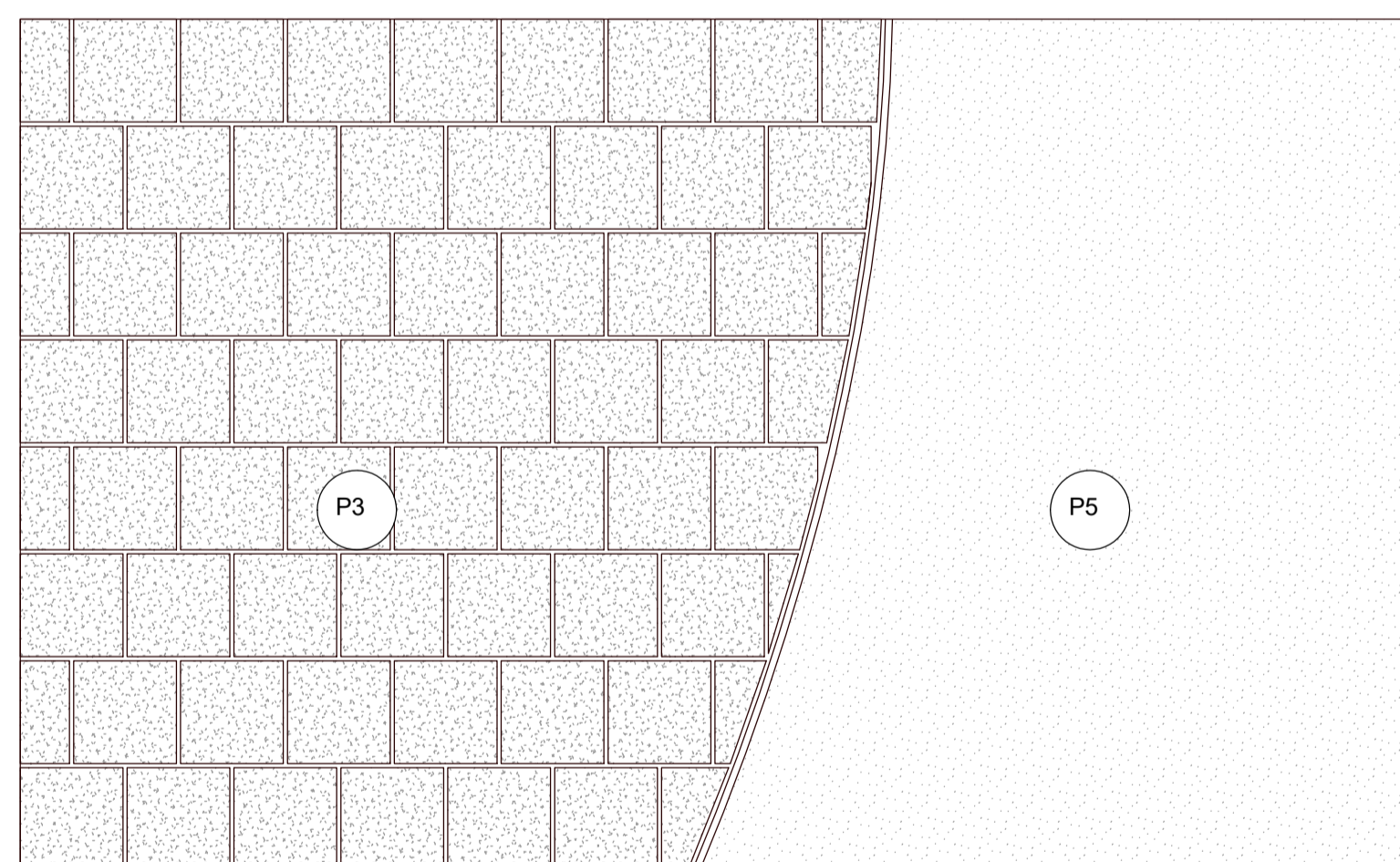


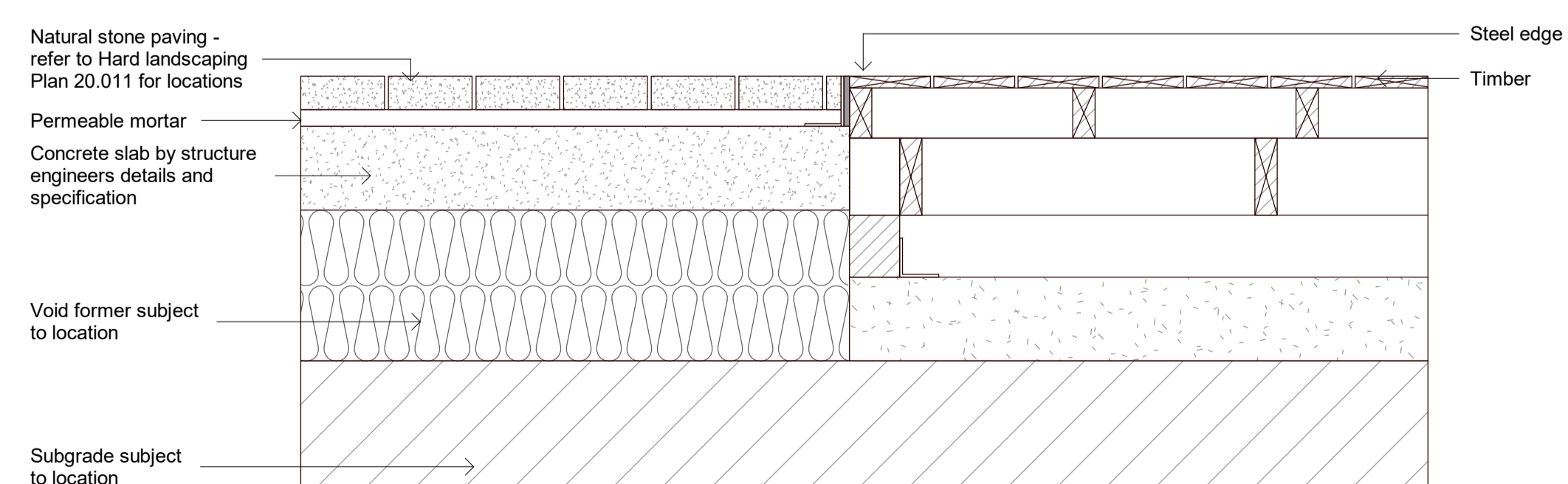
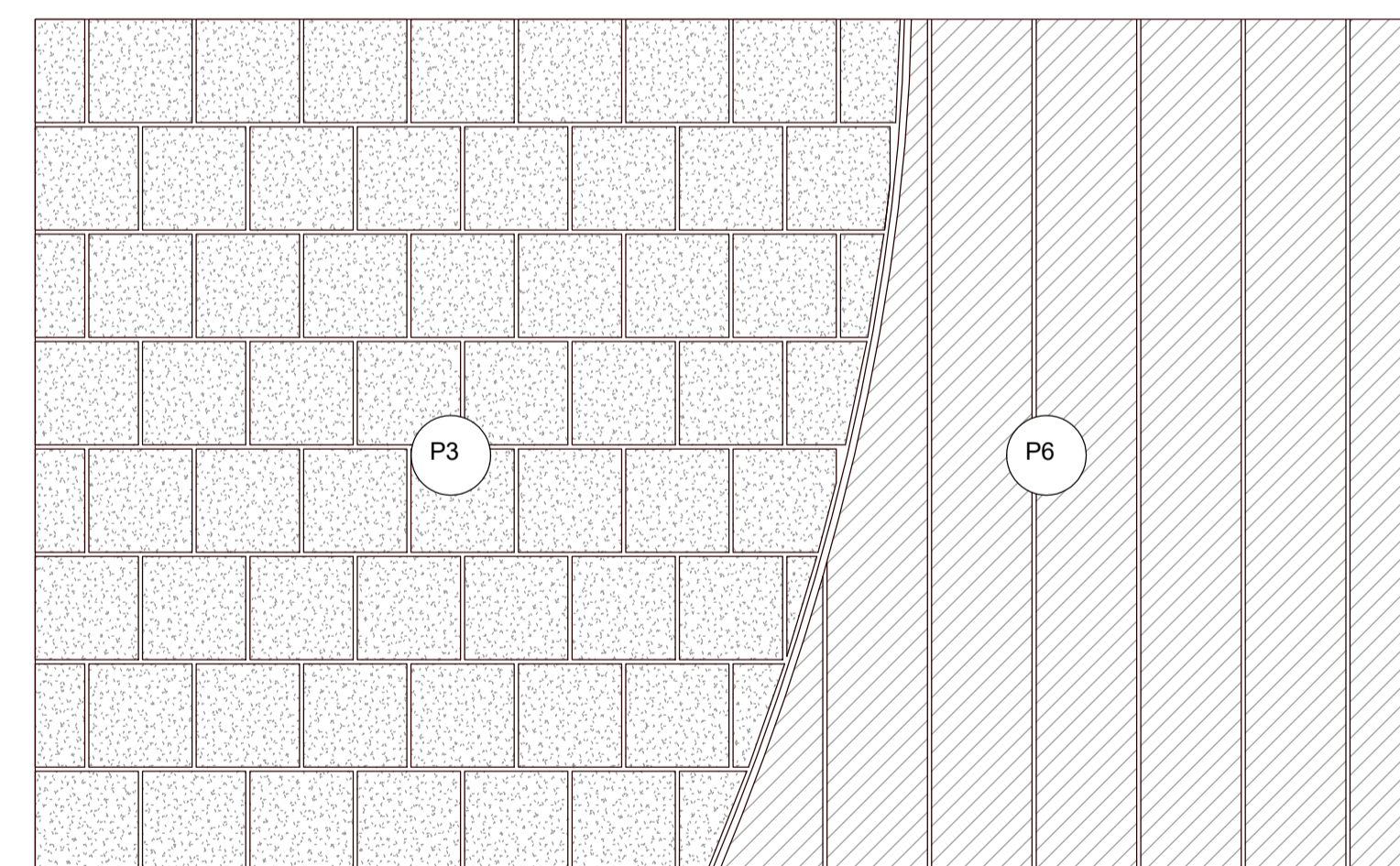
GENERAL NOTES:
 The layout of proposed new buildings is shown for reference only. Refer to the Architect's Planning drawings for details.
 The detailed layout of landscaped areas and ancillary external areas will be subject to design development.
 The precise setting out of finished levels, drainage, paving, planting and furniture will be the subject of non-material changes and may vary from the layouts shown in these plans. These minor alterations will not affect the position and arrangements of landscaped areas nor will they affect the relative relationship with existing and proposed buildings on site.
 All materials shown or highlighted are indicative only and may be subject to changes made during detailed design development.
 All structure is subject to ongoing design co-ordination and development.



TYPICAL PAVEMENT INTERFACING DETAILS - P1, P2, P3 and P4



TYPICAL PAVEMENT INTERFACING DETAILS - P3 and P5



TYPICAL PAVEMENT INTERFACING DETAILS - P3 and P6

P2 11/08/21 Issued for Planning
 P1 30/07/21 Issued for Planning

PLANNING

rev	date	author / check	comments
DSDHA			
357 Kennington Lane London SE11 5QY			
T 020 7703 3555			
F 020 7703 3890			
E info@dshdha.co.uk			
W www.dshdha.co.uk			
project			
British Library Public Realm			
96 Euston Road, Somers Town, London, NW1 2DB			
drawing title			
Typical Pavement Details			
drawn	size	date	scale
MVR/AW	A1	07/12/21	1:50
drawing number			revision
273 _50.003			
REPORT DISCREPANCIES DO NOT SCALE FROM THIS DRAWING COPYRIGHT DSDHA		USE LATEST REVISION CHECK DIMENSIONS ON SITE	

