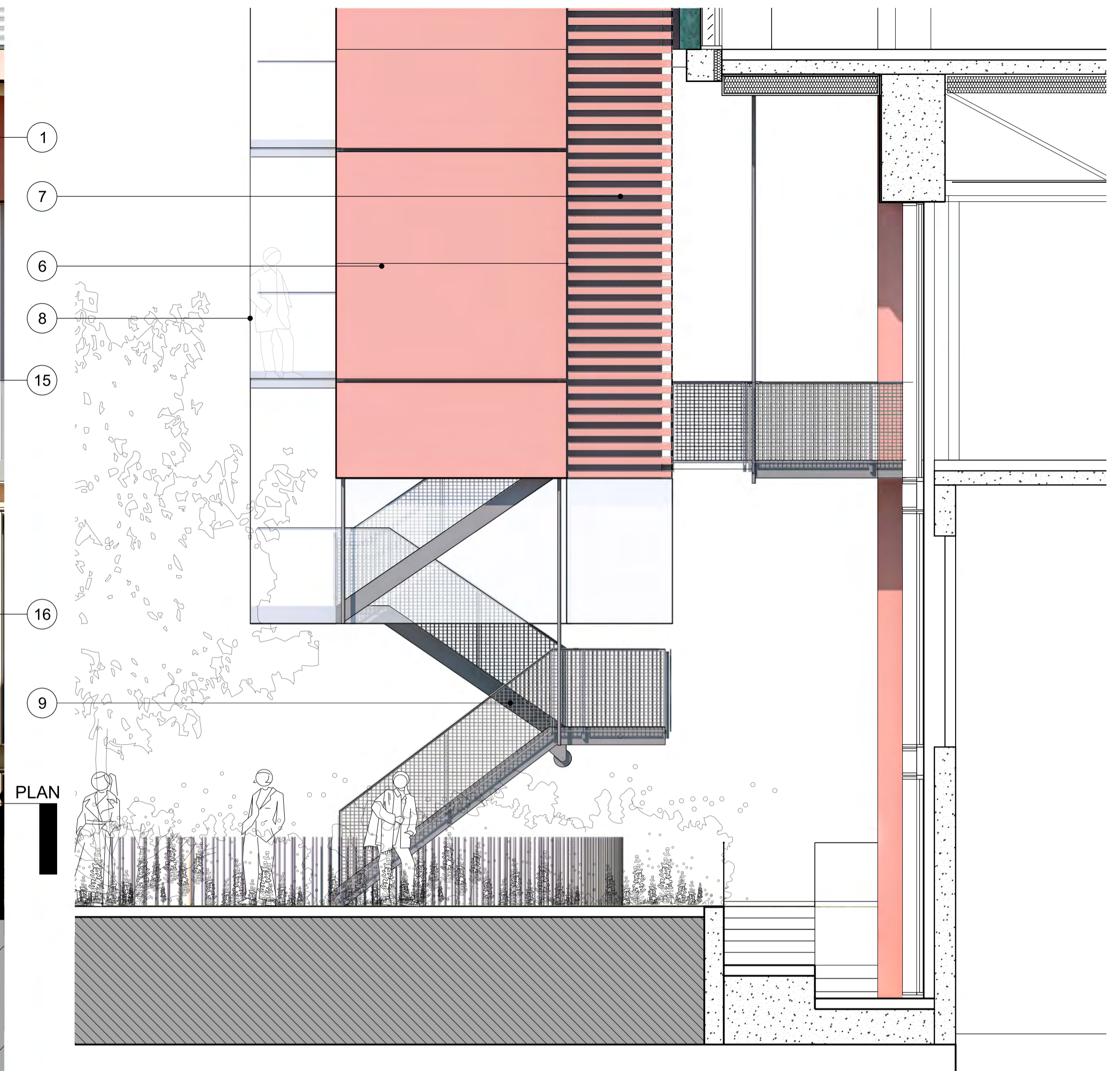
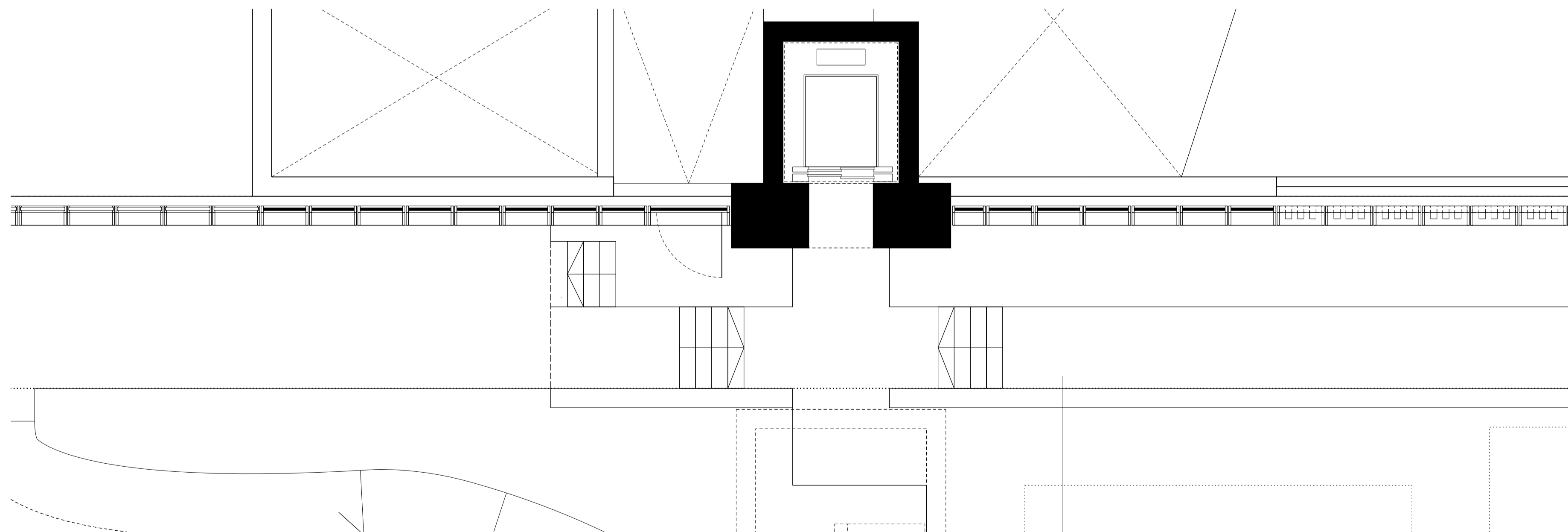


1 1405 ELEVATION 1:50 12 13 9 13 16



3 1405 SECTION 1:50



2 1405 PLAN 1:50

SECTION

MATERIAL DESCRIPTION

TRANSFER STRUCTURE

1. Coloured concrete
2. Timber secondary trusses with stainless steel tension rods and fixings
3. RC columns with expressed, painted, permanent steel formwork
4. Back painted glass insulated infill panel
5. Mesh infill ceiling panel

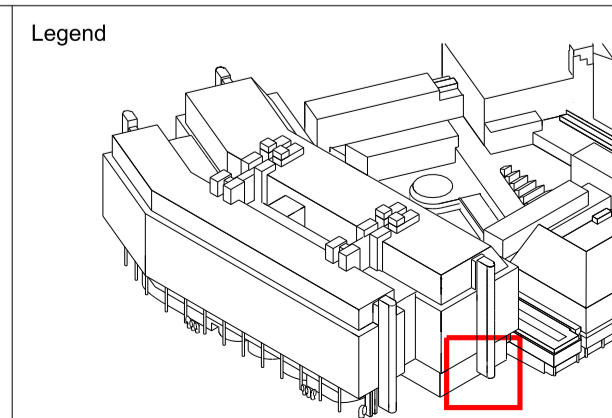
PERIMETER STAIR CORES

6. Coloured glass reinforced concrete cladding panels
7. Coloured glass reinforced concrete ribbed louvre panels
8. Curved glazing to perimeter escape stair landings
9. Painted steel fire escape stair assembly with mesh ballustrade infill panels
10. Insulated metal cladding panel
11. Double glazed unit

CLADDING LOWER LEVELS

12. Anodised aluminium double glazed unitised cladding system at 750mm centres
13. Anodised aluminium unitised cladding system at 750mm centres
14. Anodised aluminium double glazed unitised cladding system at 750mm centres w. vertical ribs
15. Anodised aluminium double glazed unitised cladding system at 3m centres
16. Anodised aluminium unitised cladding system with vertical ribs with weathering louvre behind
17. Anodised aluminium unitised cladding system with vertical ribs at 3m centres
18. Anodised aluminium insulated soffit panel
19. Painted steel air intake/extract trumpets
20. Integrated horizontal louvre to retail units paint finish
21. Circular glazed motorised sliding entrance lobby
22. Double glazed unit

Revision	Date	Description
00	24-09-2021	For Planning Application



Drawing Purpose
FOR PLANNING APPLICATION

Drawn by	Checked by	Authorised by
RSHP	RSHP	RSHP

Do not scale from drawing. The author of this drawing takes no responsibility for any dimensions obtained by measuring or scaling from this drawing and no reliance may be placed on such dimensions. If no dimension is given, it is the responsibility of the recipient to ascertain the dimension specifically from the author or by site measurement. The sizing of all structural and service elements must always be checked against the relevant engineers drawings. No reliance should be placed upon sizing information shown on this drawing.

This drawing has been prepared at a preliminary stage of the design. It is indicative and illustrative only and has not been developed in detail. Further development of the design and clarification of design assumptions will result in changes and RSHP do not undertake any responsibility that this drawing will represent the final construction.

Project
BRITISH LIBRARY

Contact
Rogers Stirk Harbour + Partners
The Leadenhall Building
122 Leadenhall Street
London
EC3V 4AB
tel: 020 7385 1235
fax: 020 7385 8409
email: j11010@rsh-p.com
www.rsh-p.com

Drawing Title © copyright Rogers Stirk Harbour + Partners, all rights reserved 2021

**DETAILED BAY
TYPICAL WEST
LOWER LEVELS**

Scale @ A1	Drawing Number	
1:50	RSHP-P-1405-D-X	
Drawing Date	Revision Date	Revision
24-09-2021	-	00