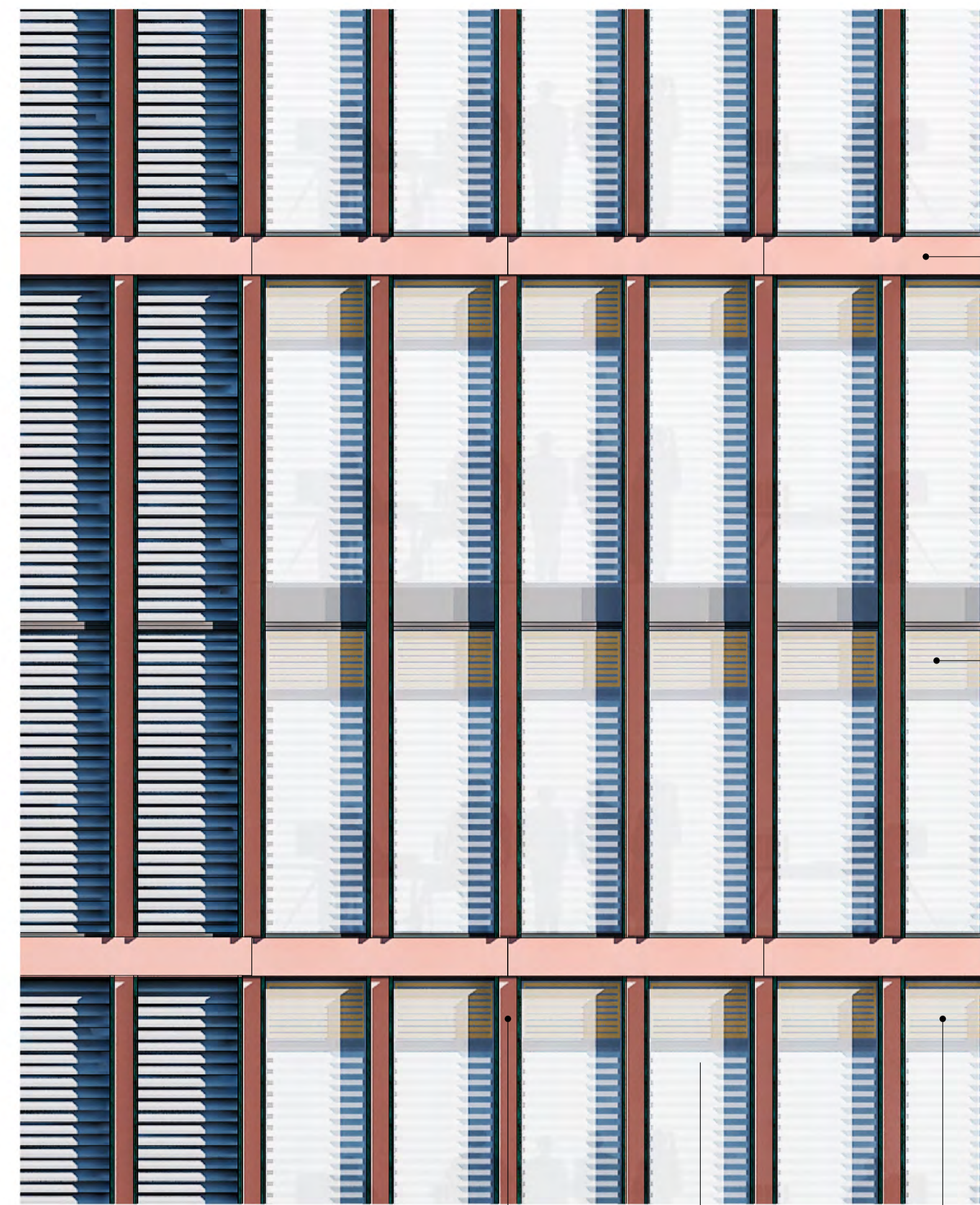


1 NORTH FACADE SECTION
1:50



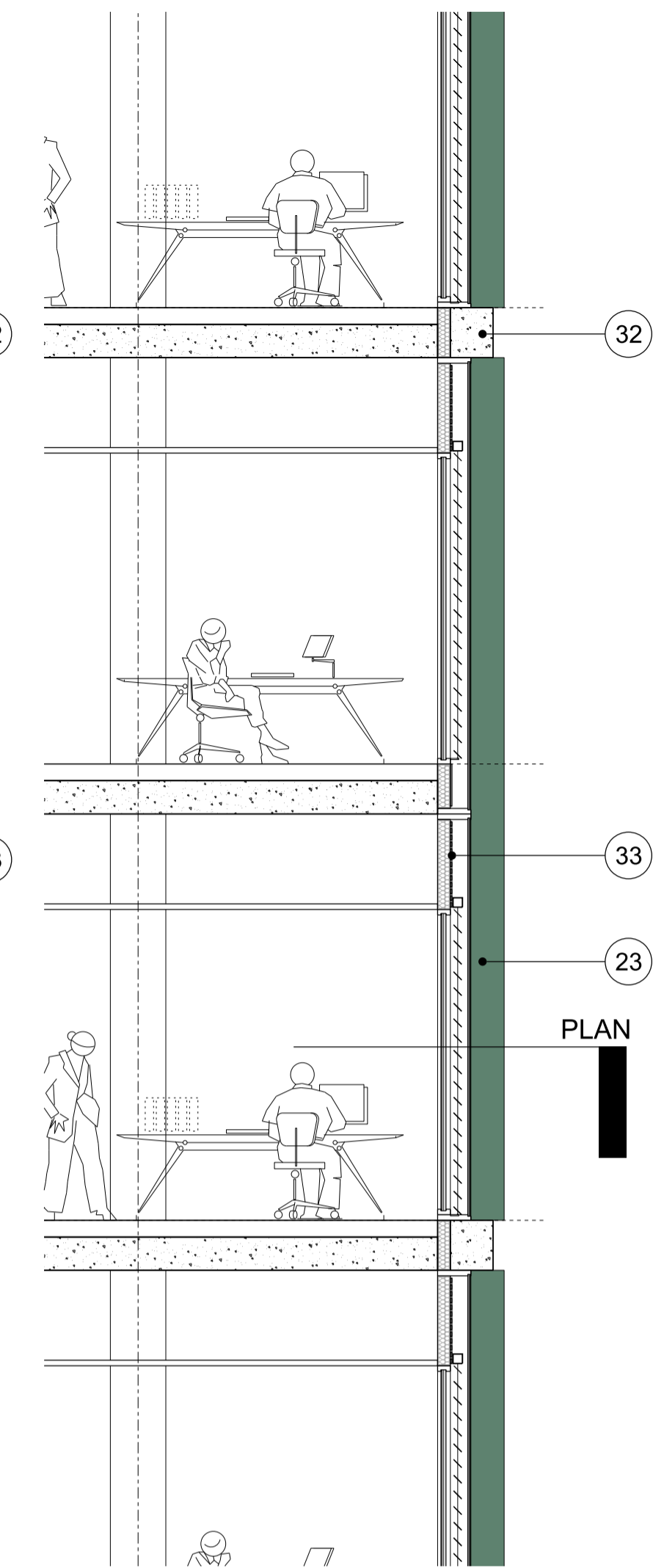
2 PART NORTH ELEVATION
1:50

SECTION



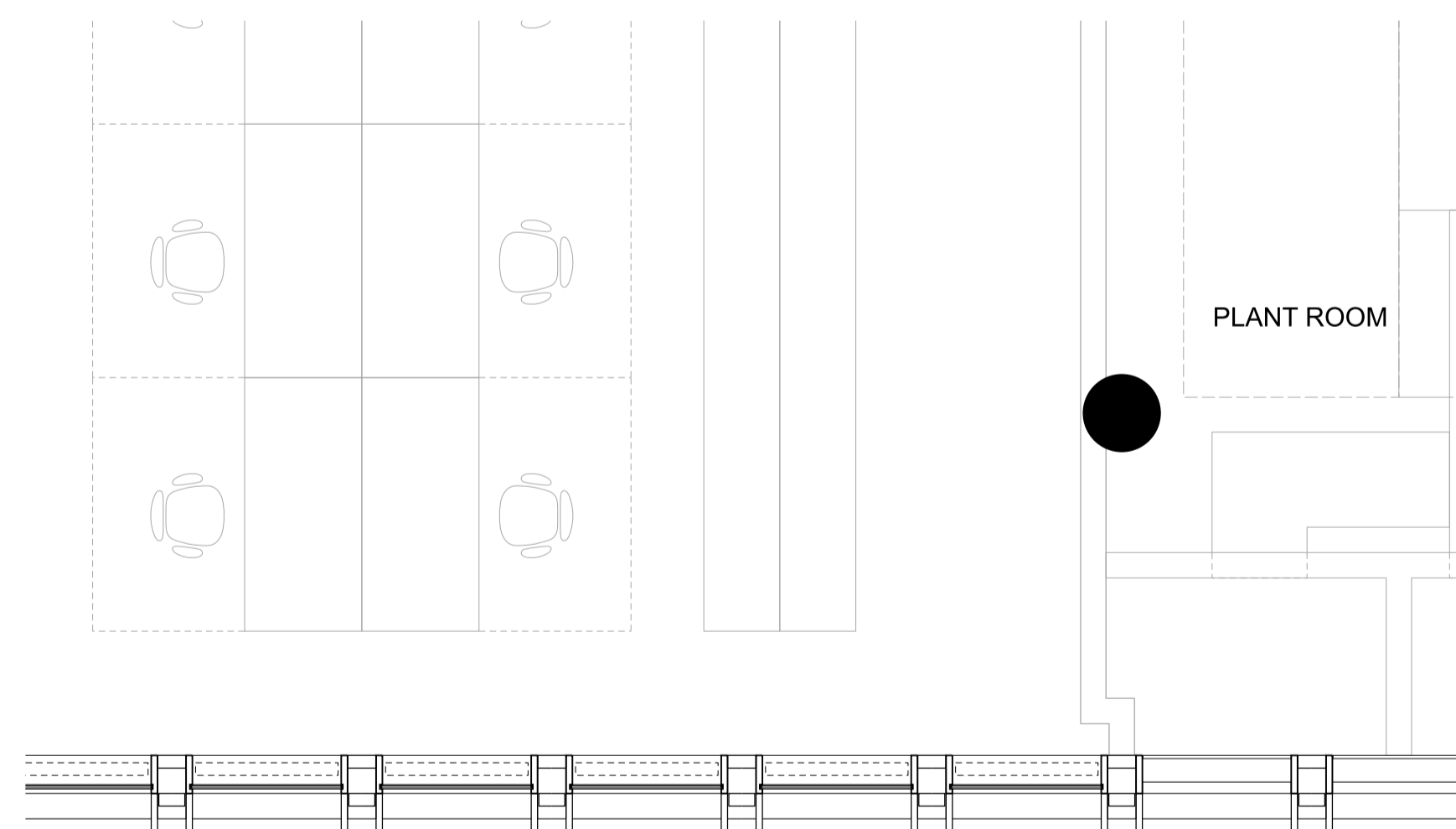
3 PART SOUTH ELEVATION
1:50

SECTION

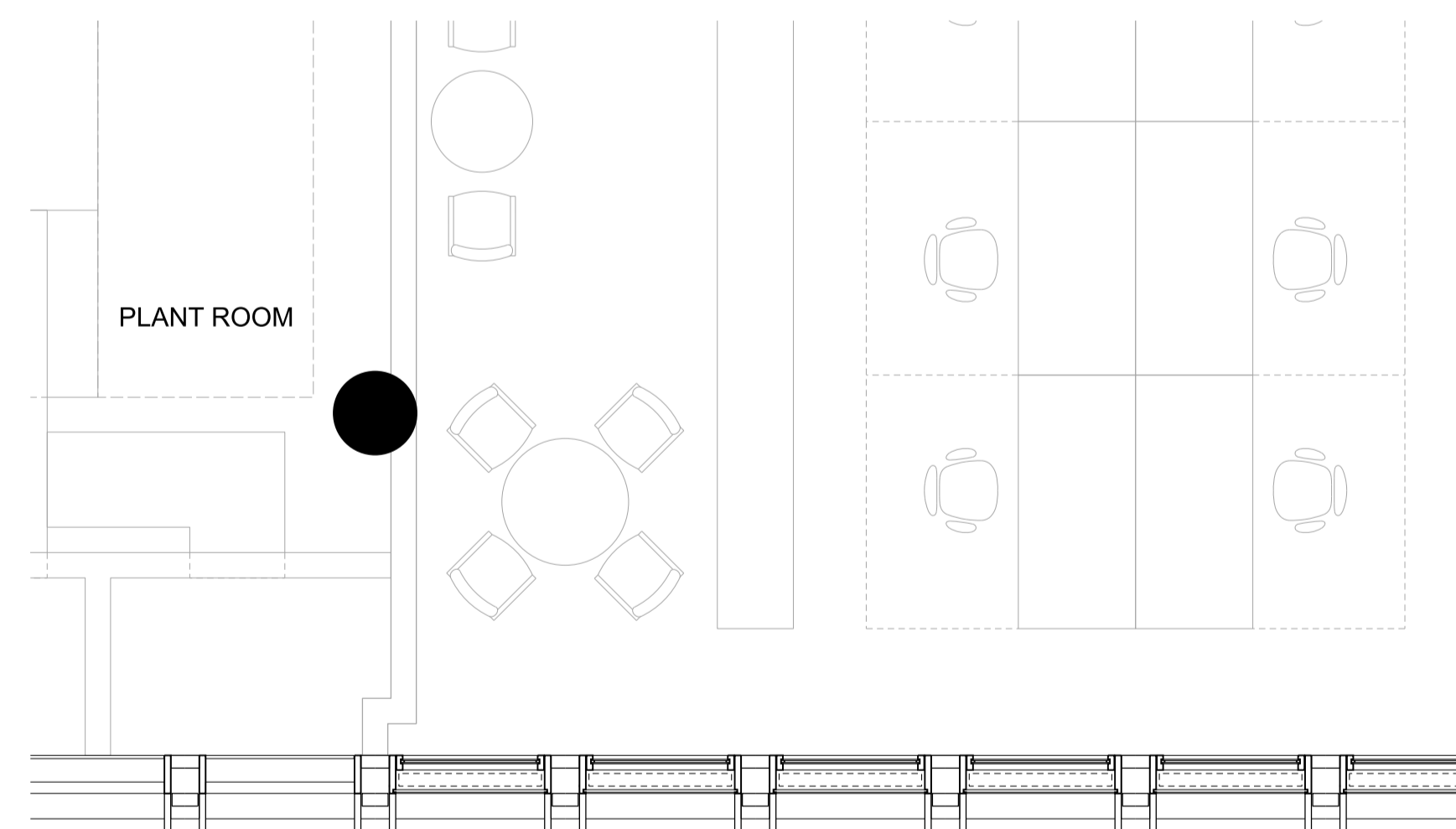


4 SOUTH FACADE SECTION
1:50

PLAN



5 PART PLAN NORTH FACADE
1:50



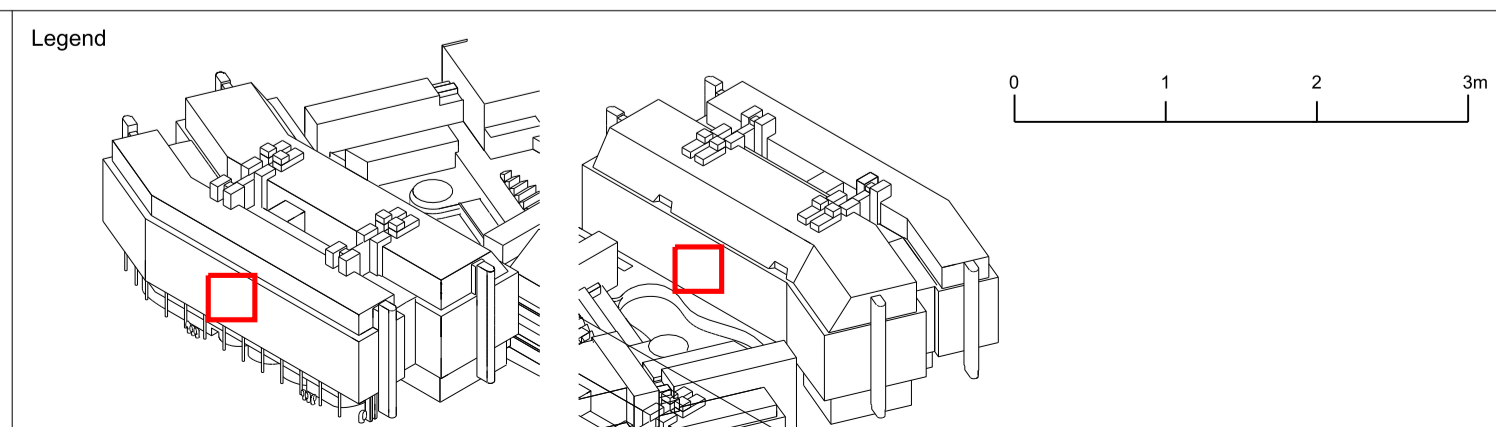
6 PART PLAN SOUTH FACADE
1:50

MATERIAL DESCRIPTION

CLADDING UPPER LEVELS

- 23. CCF system at 1.5m centres with dark green anodised/ppc finish aluminium fins and solid red pigmented GRC infill (East/South/West)
- 24. DGU at 1.5m centres with dark green anodised/ppc finish aluminium fins and solid openable vent red pigmented GRC (North)
- 25. DGU at 1.5m centres and solid openable vent (North)
- 26. CCF system at 1.5m centres with flush outer face, horizontal articulation only (South)
- 27. CCF system at 2.5m centres with expressed panel articulation solid infills. (East/West)
- 28. Plant room louvre panel
- 29. Glazed doors to terrace
- 30. Balustrade with mesh infill, integrated parapet, stainless steel uprights and GRC capping
- 31. Balustrade with mesh infill, integrated parapet, stainless steel uprights and metal capping
- 32. Coloured glass reinforced concrete spandrel
- 33. Timber spandrel panel within cladding system
- 34. External grade paving
- 35. Green roof
- 36. Low level plant enclosure green paint finish
- 37. Air Source Heat Pump/Chiller/Cooling tower framing green paint finish

Revision	Date	Description
00	24-09-2021	For Planning Application



Drawing Purpose
FOR PLANNING APPLICATION

Drawn by RSHP	Checked by RSHP	Authorised by RSHP
------------------	--------------------	-----------------------

Do not scale from drawing. The author of this drawing takes no responsibility for any dimensions obtained by measuring or scaling from this drawing and no reliance may be placed on such dimensions. If no dimension is given, it is the responsibility of the recipient to ascertain the dimension specifically from the author or by site measurement.
The sizing of all structural and service elements must always be checked against the relevant engineers drawings. No reliance should be placed upon sizing information shown on this drawing.

This drawing has been prepared at a preliminary stage of the design. It is indicative and illustrative only and has not been developed in detail. Further development of the design and clarification of design assumptions will result in changes and RSHP do not undertake any responsibility that this drawing will represent the final construction.

Project BRITISH LIBRARY	Drawing Title © copyright Rogers Stirk Harbour + Partners, all rights reserved 2021 DETAILED BAY TYPICAL NORTH AND SOUTH UPPER LEVELS	
Contact Rogers Stirk Harbour + Partners	Scale @ A1 1:50	Drawing Number RSHP-P-1407-D-X
The Leadenhall Building 122 Leadenhall Street London EC3V 4AB	tel: 020 7385 1235 fax: 020 7385 8409 email: J11010@rsh-p.com www.rsh-p.com	Drawing Date 24-09-2021
	Revision Date -	Revision 00