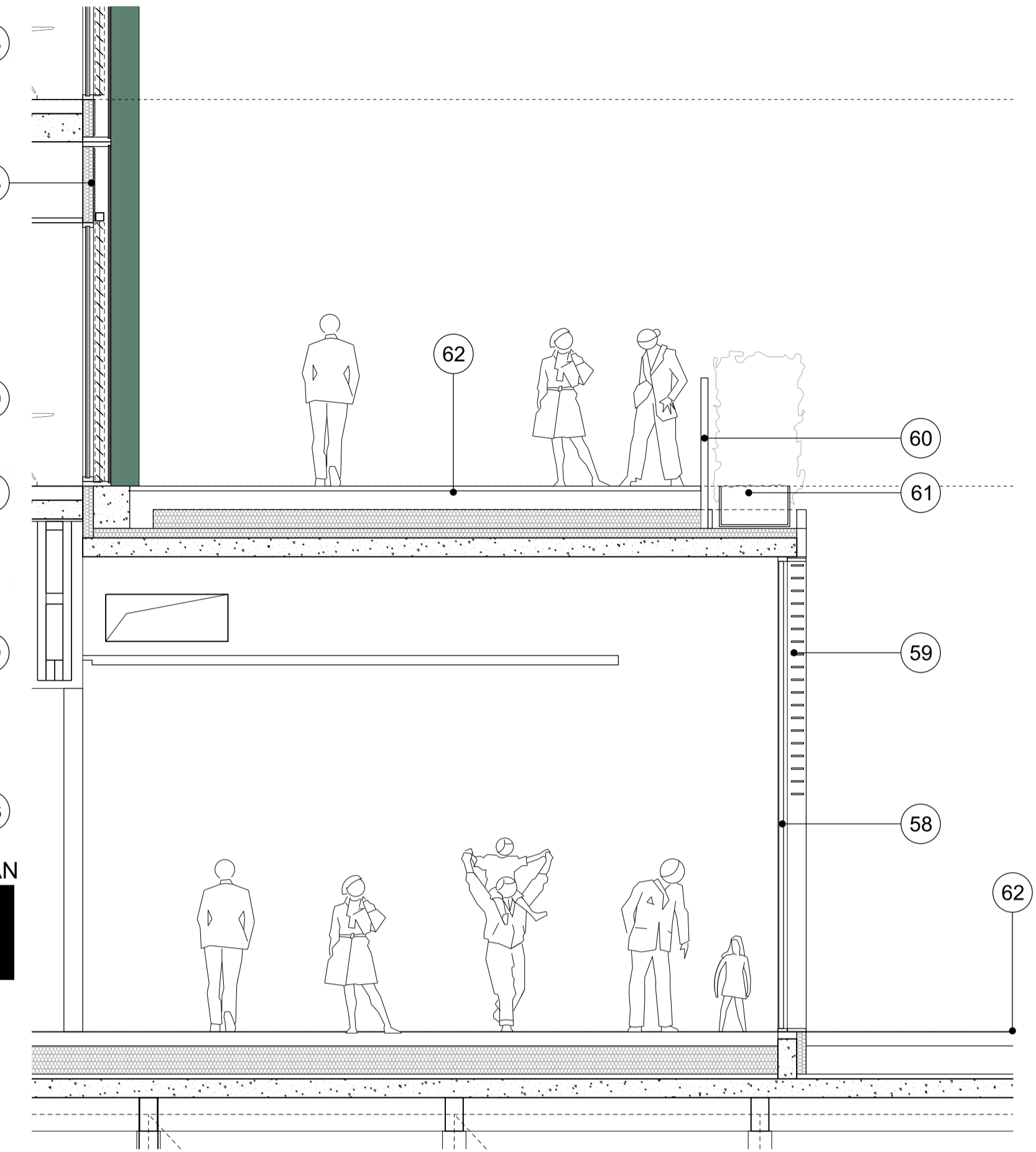
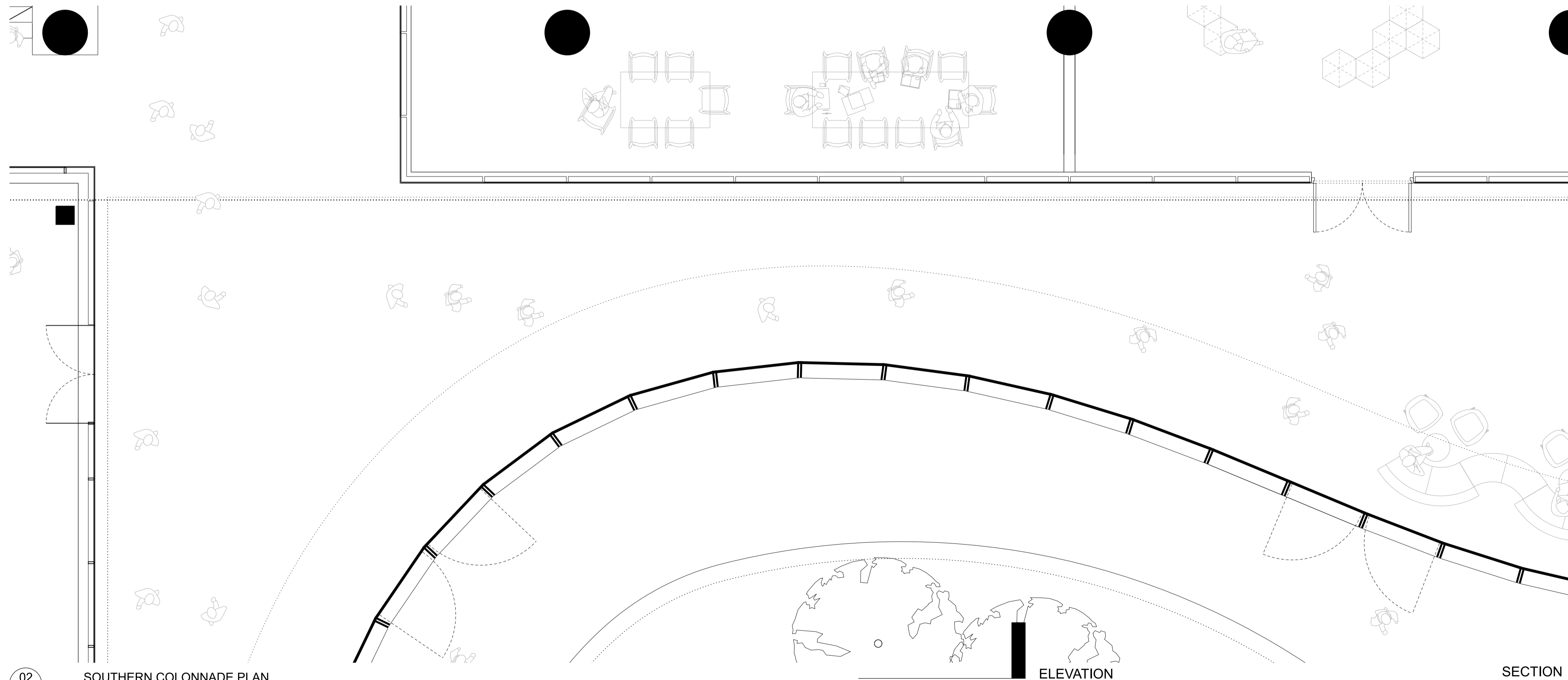


01  
1410  
SOUTHERN COLONNADE ELEVATION  
1:50



03  
1410  
SOUTHERN COLONNADE SECTION  
1:50



02  
1410  
SOUTHERN COLONNADE PLAN  
1:50

**MATERIAL DESCRIPTION**

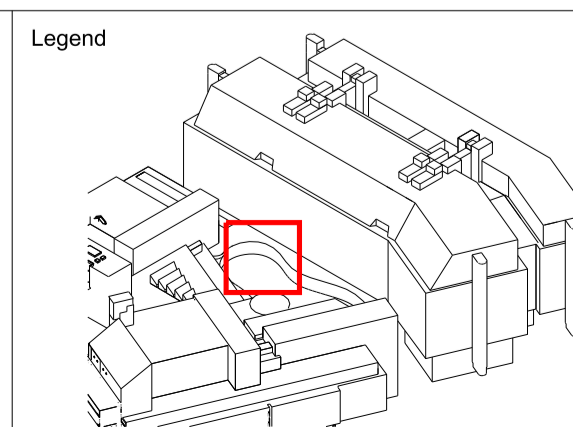
**COURTYARD CLADDING**

- 58. Anodised aluminium double glazed unitised cladding system at 1.5m centres
- 59. Horizontal external solar shading dark green anodised/ppc finish aluminium
- 60. Balustrade vertical flats at 100mm centres with dark green anodised/ppc finish
- 61. Integrated planter with perimeter planting
- 62. External grade paving

**CLADDING UPPER LEVELS**

- 23. CCF system at 1.5m centres with dark green anodised/ppc finish aluminium fins and solid red pigmented GRC infill (East/South/West)
- 24. DGU at 1.5m centres with dark green anodised/ppc finish aluminium fins and solid openable vent red pigmented GRC (North)
- 25. DGU at 1.5m centres and solid openable vent (North)
- 26. CCF system at 1.5m centres with flush outer face, horizontal articulation only (South)
- 27. CCF system at 2.5m centres with expressed panel articulation solid infills. (East/West)
- 28. Plant room louvre panel
- 29. Glazed doors to terrace
- 30. Balustrade with mesh infill, integrated parapet, stainless steel uprights and GRC capping
- 31. Balustrade with mesh infill, integrated parapet, stainless steel uprights and metal capping
- 32. Coloured glass reinforced concrete spandrel
- 33. Timber spandrel panel within cladding system
- 34. External grade paving
- 35. Green roof
- 36. Low level plant enclosure green paint finish
- 37. Air Source Heat Pump/Chiller/Cooling tower framing green paint finish

Revision	Date	Description
00	24-09-2021	For Planning Application



**Drawing Purpose**  
**FOR PLANNING APPLICATION**

Drawn by	Checked by	Authorised by
RSHP	RSHP	RSHP

Do not scale from drawing. The author of this drawing takes no responsibility for any dimensions obtained by measuring or scaling from this drawing and no reliance may be placed on such dimensions. If no dimension is given, it is the responsibility of the recipient to ascertain the dimension specifically from the author or by site measurement. The sizing of all structural and service elements must always be checked against the relevant engineers drawings. No reliance should be placed upon sizing information shown on this drawing.

This drawing has been prepared at a preliminary stage of the design. It is indicative and illustrative only and has not been developed in detail. Further development of the design and clarification of design assumptions will result in changes and RSHP do not undertake any responsibility that this drawing will represent the final construction.

Project <b>BRITISH LIBRARY</b>	
Contact <b>Rogers Stirk Harbour + Partners</b>	The Leadenhall Building 122 Leadenhall Street London EC3V 4AB
tel: 020 7385 1235 fax: 020 7385 8409 email: J11010@rsh-p.com www.rsh-p.com	

Drawing Title © copyright Rogers Stirk Harbour + Partners, all rights reserved 2021 <b>DETAILED BAY LEVEL 1 COURTYARD LOWER LEVELS</b>		
Scale @ A1 <b>1:50</b>	Drawing Number <b>RSHP-P-1410-D-X</b>	
Drawing Date <b>24-09-2021</b>	Revision Date <b>-</b>	Revision <b>00</b>