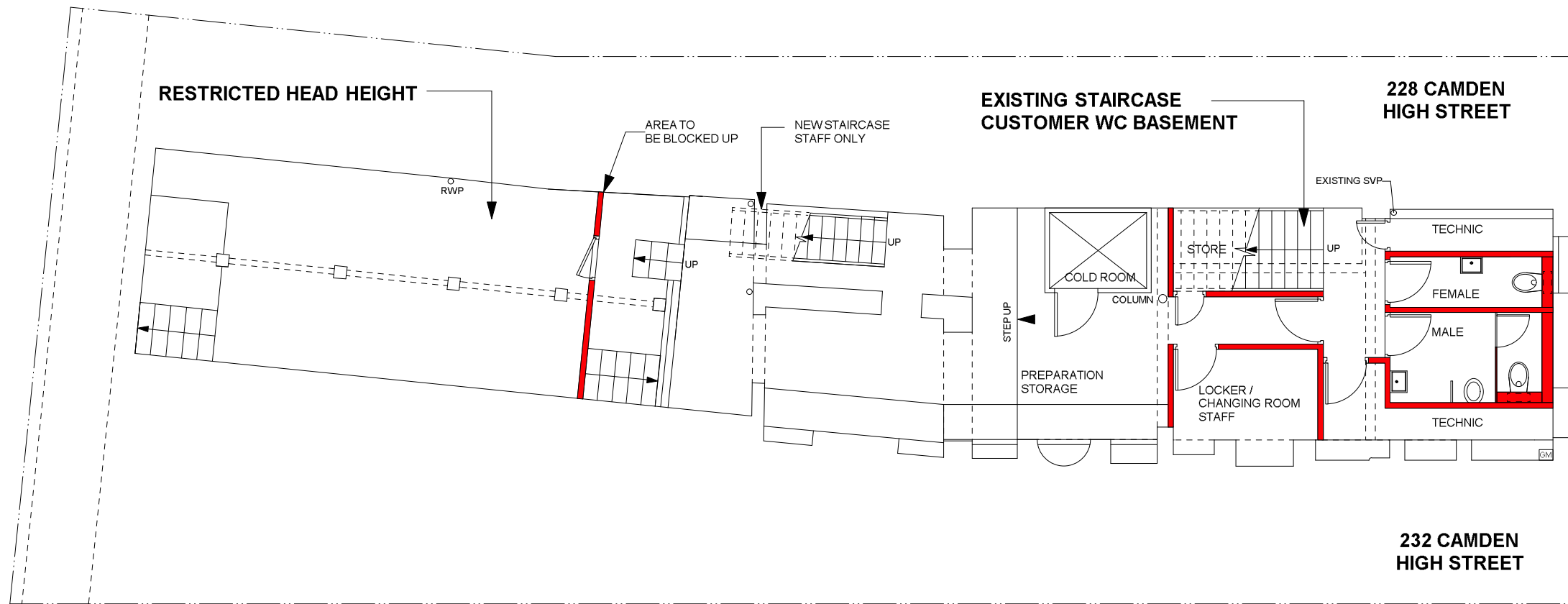


# PROPOSED BASEMENT

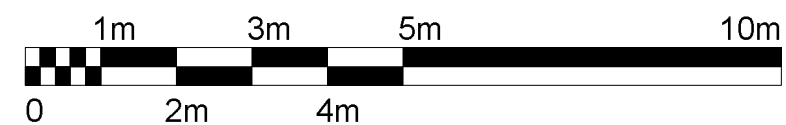
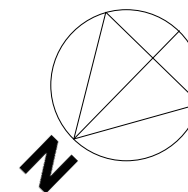
# PL-001

This drawing is the property of Ganguly Architects Ltd and copyright is reserved by them.

This drawing is issued on condition that it is not copied, used or disclosed by or to any unauthorized person without the prior written consent of Ganguly Architects Ltd.



**NEW PARTITION**



REV.	DATE	DESCRIPTION	BY

CLIENT:  
**K FOOD LONDON LTD**

**GANGULY ARCHITECTS LTD**  
 Tel.: 020 7617 7590  
 E-MAIL: info@ganguly.co.uk  
 www.ganguly.co.uk

PROJECT:  
**230 CAMDEN HIGH STREET LONDON, NW1 8QS**

DRAWING TITLE:  
**PROPOSED BASEMENT**

SCALE: <b>1:100@A3</b>	DATE: <b>15.02.2022</b>	DRAWN: <b>AGH</b>
---------------------------	----------------------------	----------------------

DRAWING NO.: <b>230CHS-2022-PL-001</b>	REVISION:
---	-----------