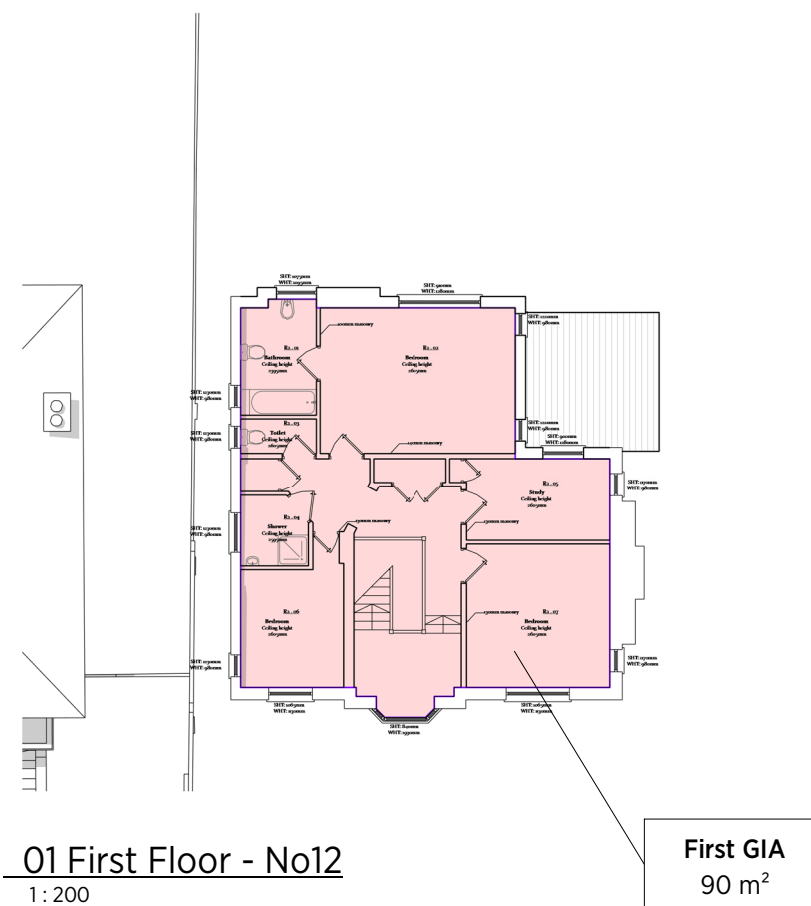
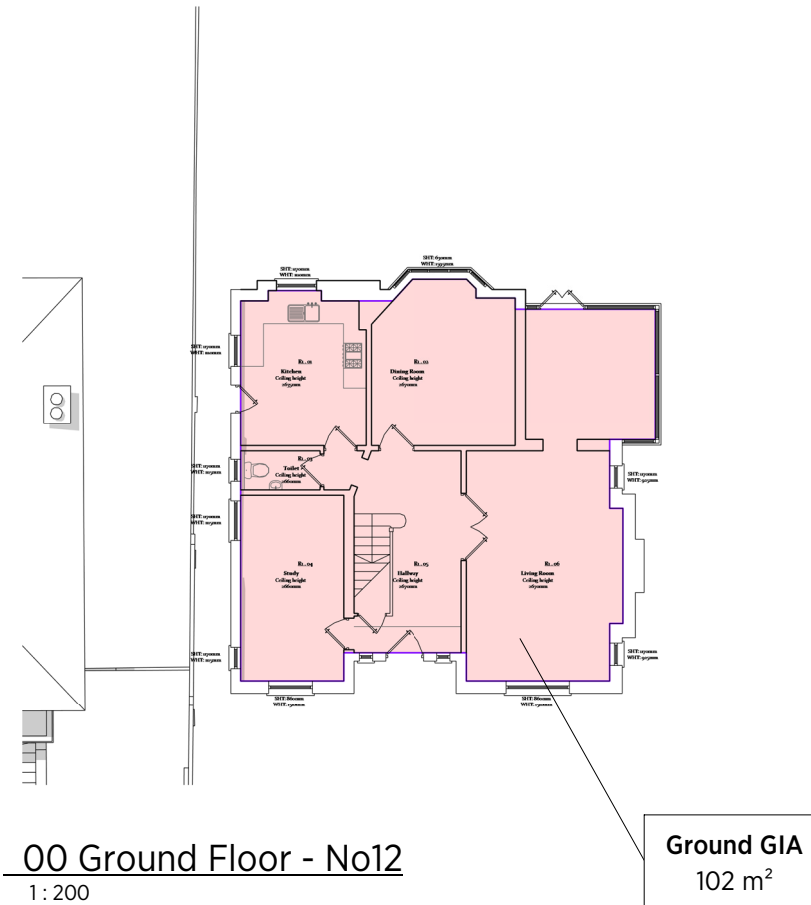
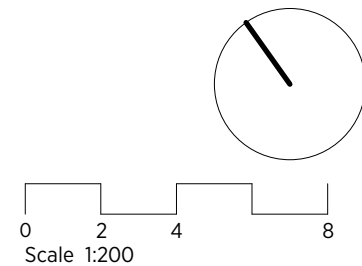


No.12 Gross Internal Area (GIA) - Existing		
Level	Area (sq.m)	Area (sq.ft)
00 Ground Floor - No12	101.7 m ²	1,095 ft ²
01 First Floor - No12	89.8 m ²	967 ft ²
	191.5 m ²	2,062 ft ²



GENERAL NOTES:
 This drawing is copyright of KSR architects.
 This drawing must be read in conjunction with the Designer's Risk Assessment, specification and all other relevant documentation and drawings.
 KSR architects accept no liability for any expense, loss or damage of whatsoever nature and however arising from any variation made to this drawing or in the execution of the work to which it relates which has not been referred to them and their approval obtained.
 Areas are based on unchecked survey and are approximate only.
 Do not scale from this drawing or the digital data, only figured dimensions are to be used. Refer to linear scale for guidance.
 Check all dimensions on site prior to carrying out any works and advise any discrepancy



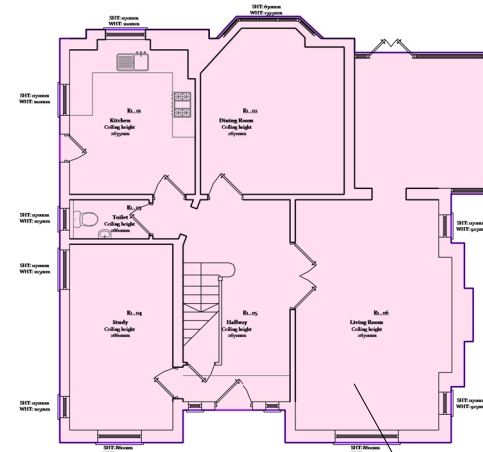
KSR ARCHITECTS & INTERIOR DESIGNERS
 KSR Architects LLP mail@ksrarchitects.com
 14 Greenland Street t: +44 (0)20 7692 5000
 London NW1 0ND www.ksrarchitects.com

12 Eldon Grove

Existing GIA

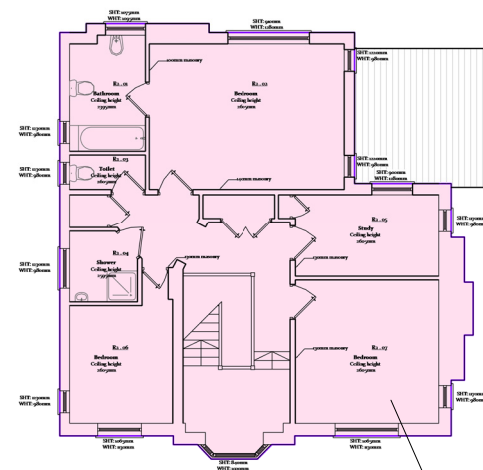
Date: 03/02/22	Status: PLANNING
Scale: 1:200 @ A3	© KSR Architects
Project Ref: 20012-12	Drawing No: E-800
	Revision:

No.12 Gross External Area (GEA) - Existing		
Level	Area (sq.m)	Area (sq.ft)
00 Ground Floor - No12	114.7 m ²	1,235 ft ²
01 First Floor - No12	104.0 m ²	1,120 ft ²
	218.7 m ²	2,354 ft ²



00 Ground Floor - No12
1 : 200

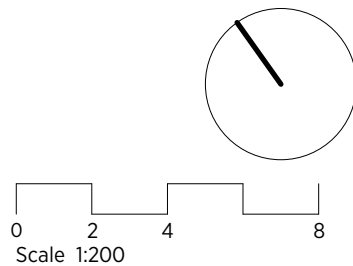
Ground GEA
115 m²



01 First Floor - No12
1 : 200

First GEA
104 m²

GENERAL NOTES:
This drawing is copyright of KSR architects.
This drawing must be read in conjunction with the Designer's Risk Assessment, specification and all other relevant documentation and drawings.
KSR architects accept no liability for any expense, loss or damage of whatsoever nature and however arising from any variation made to this drawing or in the execution of the work to which it relates which has not been referred to them and their approval obtained.
Areas are based on unchecked survey and are approximate only.
Do not scale from this drawing or the digital data, only figured dimensions are to be used. Refer to linear scale for guidance.
Check all dimensions on site prior to carrying out any works and advise any discrepancy



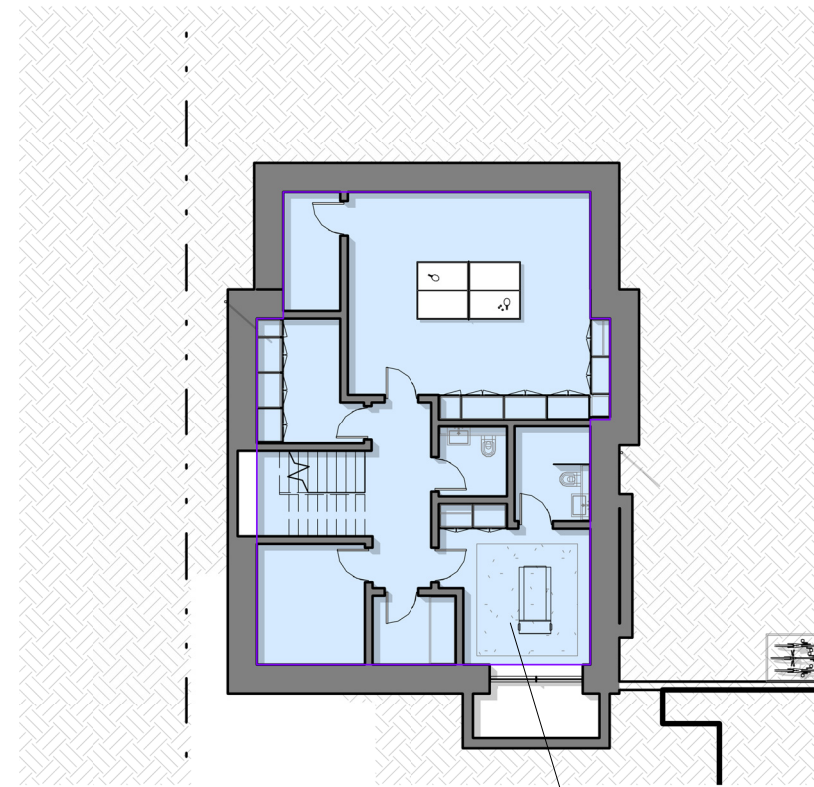
KSR ARCHITECTS & INTERIOR DESIGNERS
KSR Architects LLP mail@ksrarchitects.com
14 Greenland Street t: +44 (0)20 7692 5000
London NW1 6ND www.ksrarchitects.com

12 Eldon Grove

Existing GEA

Date: 03/02/22	Status: PLANNING
Scale: 1:200	© KSR Architects
Project Ref: 20012-12	Drawing No: E-801
	Revision:

No.12 Gross Internal Area (GIA)		
Level	Area (sq.m)	Area (sq.ft)
-01 Basement - No12	109.1 m ²	1,174 ft ²
00 Ground Floor - No12	118.4 m ²	1,275 ft ²
01 First Floor - No12	97.9 m ²	1,053 ft ²
02 Second Floor - No12	30.4 m ²	327 ft ²
	355.8 m ²	3,829 ft ²



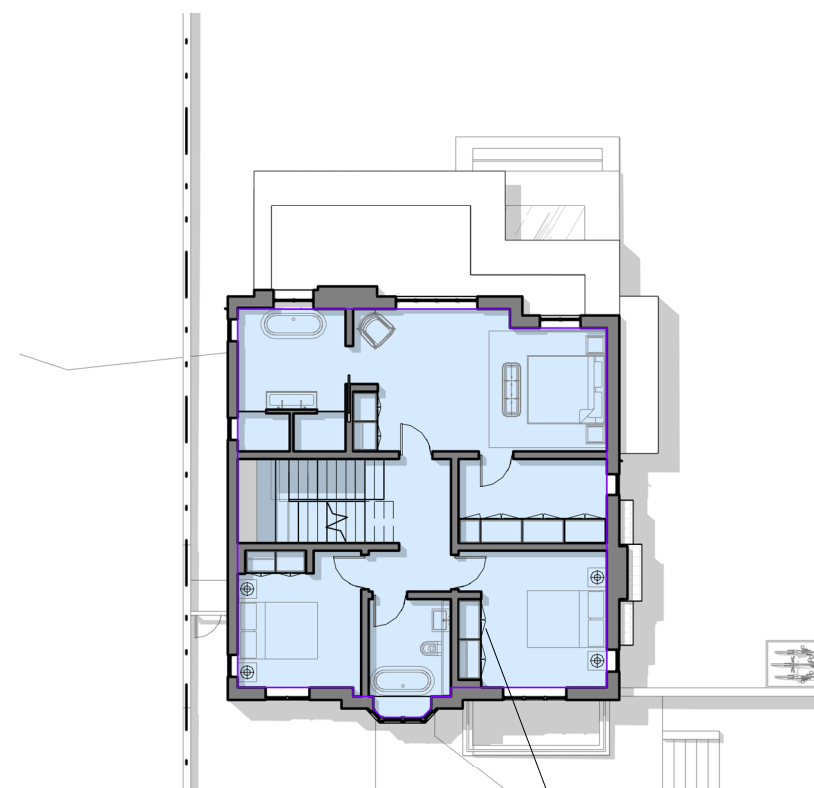
-01 Basement - No12
1:200

Basement GIA
109 m²



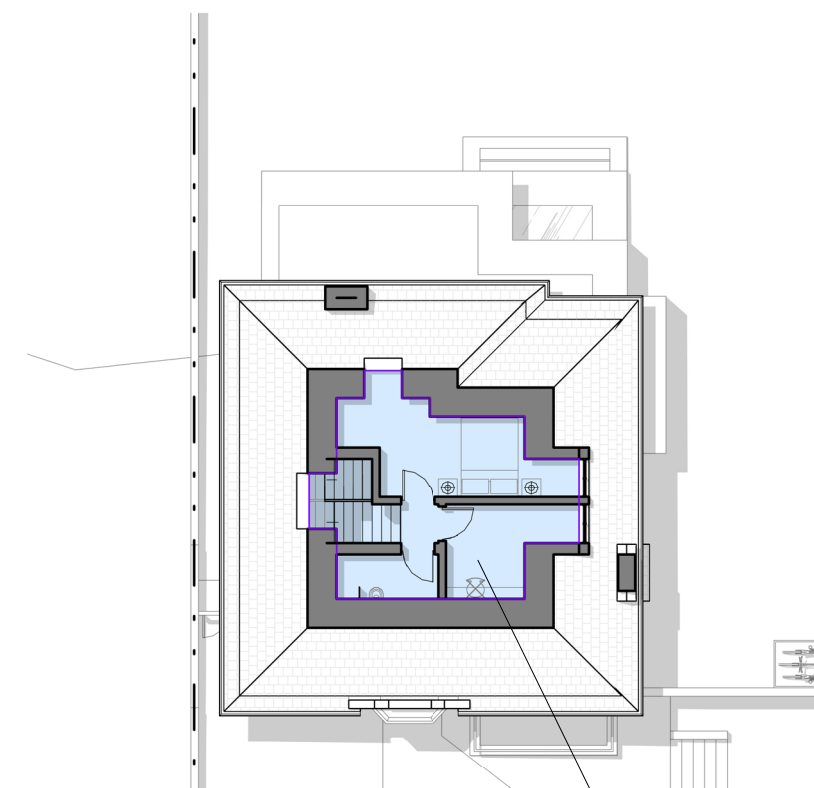
00 Ground Floor - No12
1:200

Ground GIA
118 m²



01 First Floor - No12
1:200

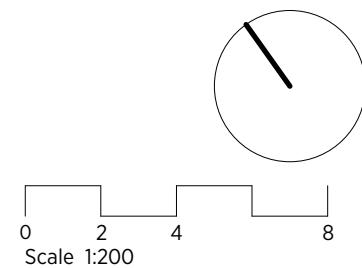
First GIA
98 m²



02 Second Floor - No12
1:200

Second GIA
30 m²

GENERAL NOTES:
This drawing is copyright of KSR architects.
This drawing must be read in conjunction with the Designer's Risk Assessment, specification and all other relevant documentation and drawings.
KSR architects accept no liability for any expense, loss or damage of whatsoever nature and however arising from any variation made to this drawing or in the execution of the work to which it relates which has not been referred to them and their approval obtained.
Areas are based on unchecked survey and are approximate only.
Do not scale from this drawing or the digital data, only figured dimensions are to be used. Refer to linear scale for guidance.
Check all dimensions on site prior to carrying out any works and advise any discrepancy



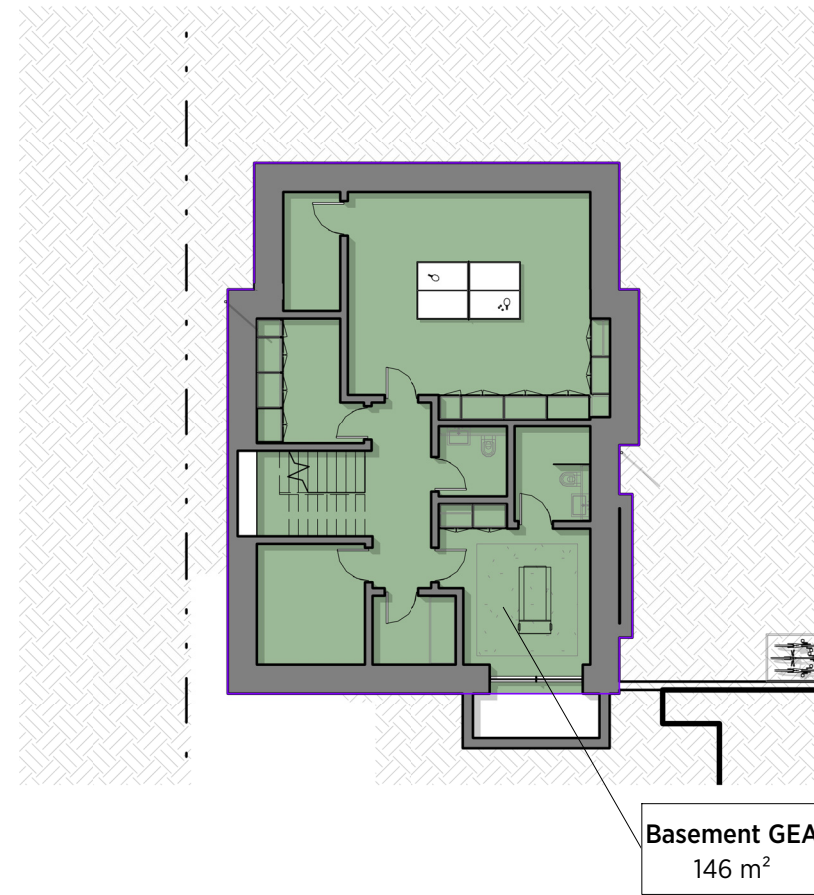
KSR ARCHITECTS & INTERIOR DESIGNERS
KSR Architects LLP
14 Greenland Street
London NW1 0ND
mail@ksrarchitects.com
t: +44 (0)20 7692 5000
www.ksrarchitects.com

12 Eldon Grove

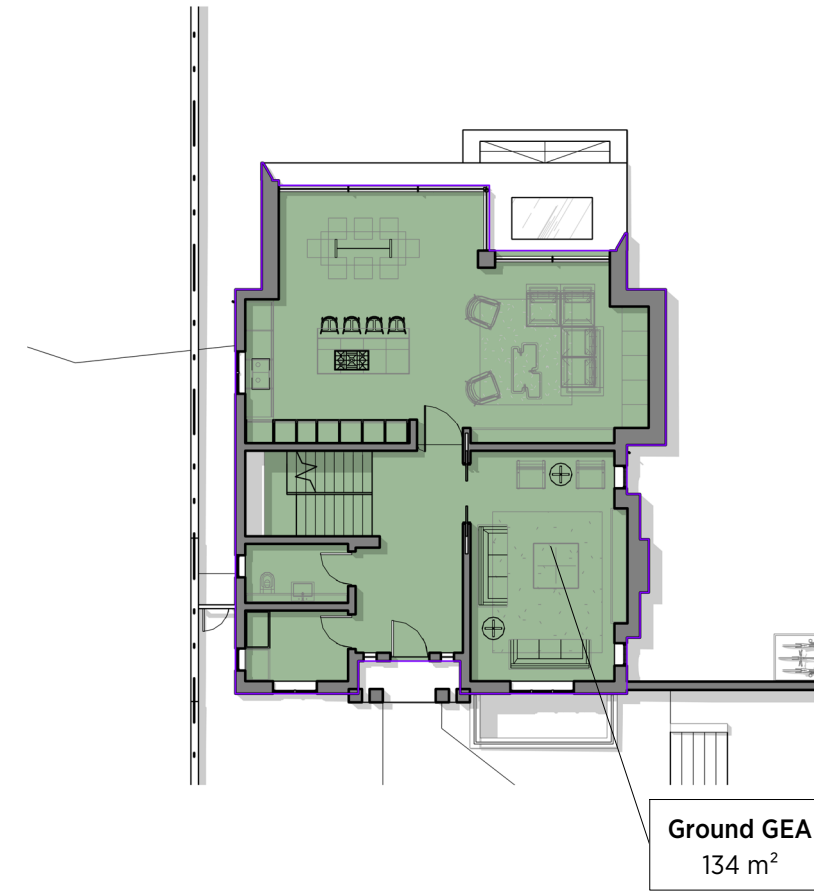
Proposed GIA

Date: 03/02/22 Status: PLANNING
Scale: 1:200 @ A3 © KSR Architects
Project Ref: 20012-12 Drawing No: P-800 Revision:

No.12 Gross External Area (GEA)		
Level	Area (sq.m)	Area (sq.ft)
-01 Basement - No12	146.1 m ²	1,572 ft ²
00 Ground Floor - No12	134.4 m ²	1,447 ft ²
01 First Floor - No12	111.5 m ²	1,200 ft ²
02 Second Floor - No12	46 m ²	495 ft ²
	438 m ²	4,715 ft ²



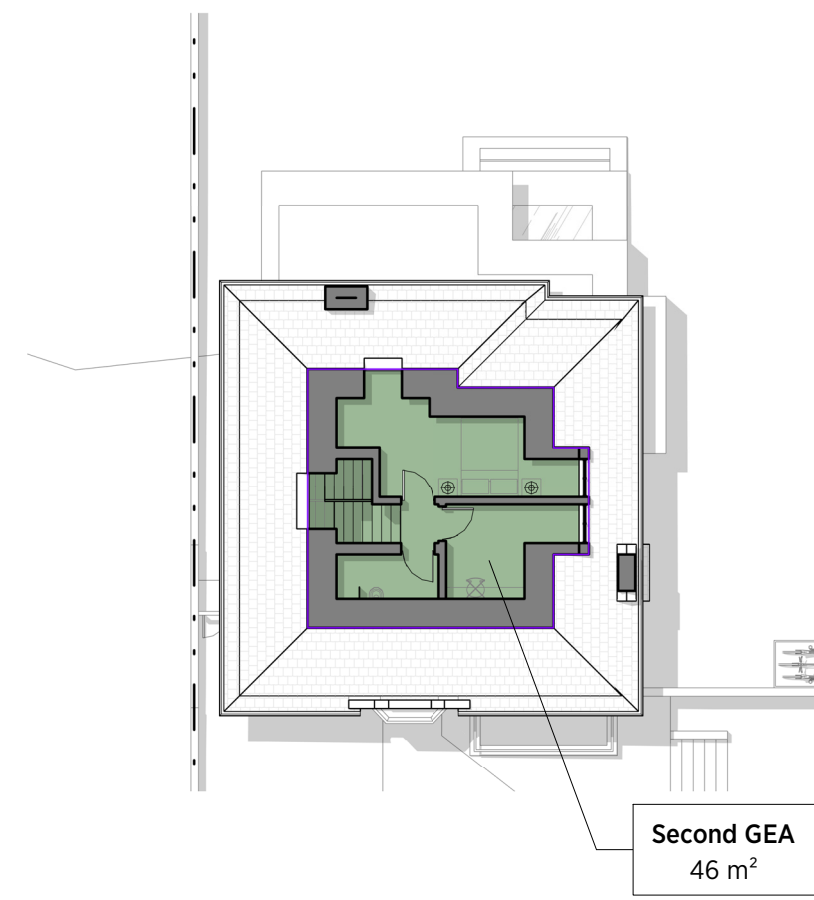
-01 Basement - No12
1:200



00 Ground Floor - No12
1:200

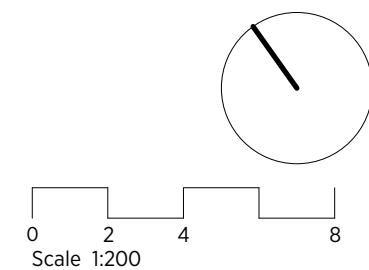


01 First Floor - No12
1:200



02 Second Floor - No12
1:200

GENERAL NOTES:
 This drawing is copyright of KSR architects.
 This drawing must be read in conjunction with the Designer's Risk Assessment, specification and all other relevant documentation and drawings.
 KSR architects accept no liability for any expense, loss or damage of whatsoever nature and however arising from any variation made to this drawing or in the execution of the work to which it relates which has not been referred to them and their approval obtained.
 Areas are based on unchecked survey and are approximate only.
 Do not scale from this drawing or the digital data, only figured dimensions are to be used. Refer to linear scale for guidance.
 Check all dimensions on site prior to carrying out any works and advise any discrepancy



KSR ARCHITECTS & INTERIOR DESIGNERS
 KSR Architects LLP | 14 Greenland Street | London NW1 0ND
 t: +44 (0)20 7692 5000 | e: mail@ksrarchitects.com | www.ksrarchitects.com

12 Eldon Grove

Proposed GEA

Date: 03/02/22	Status: PLANNING
Scale: 1:200	© KSR Architects
Project Ref: 20012-12	Drawing No: P-801
	Revision: