

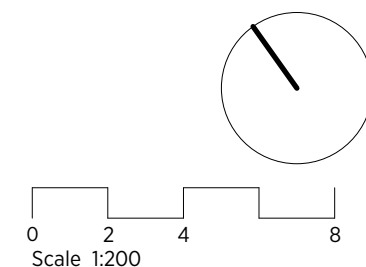
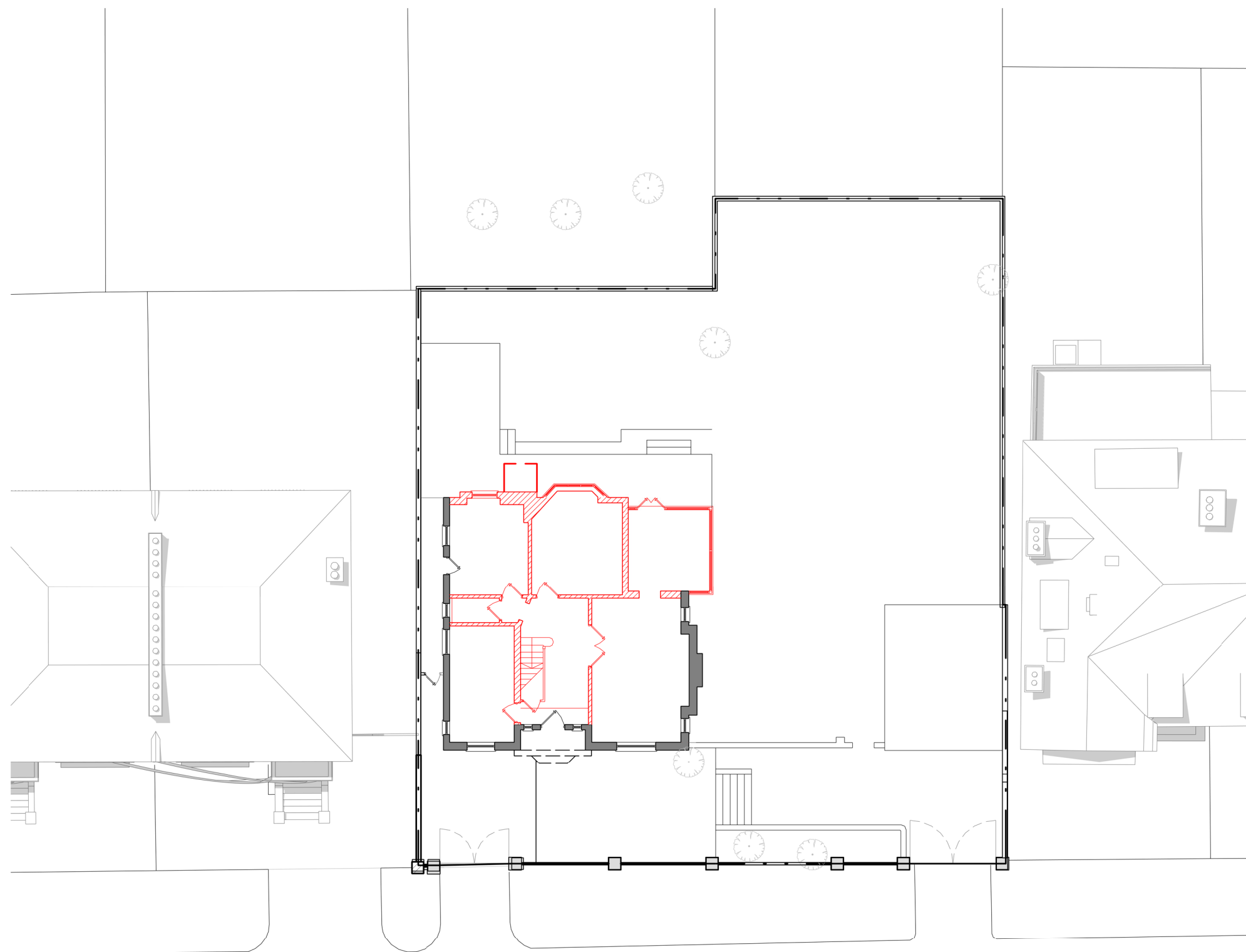


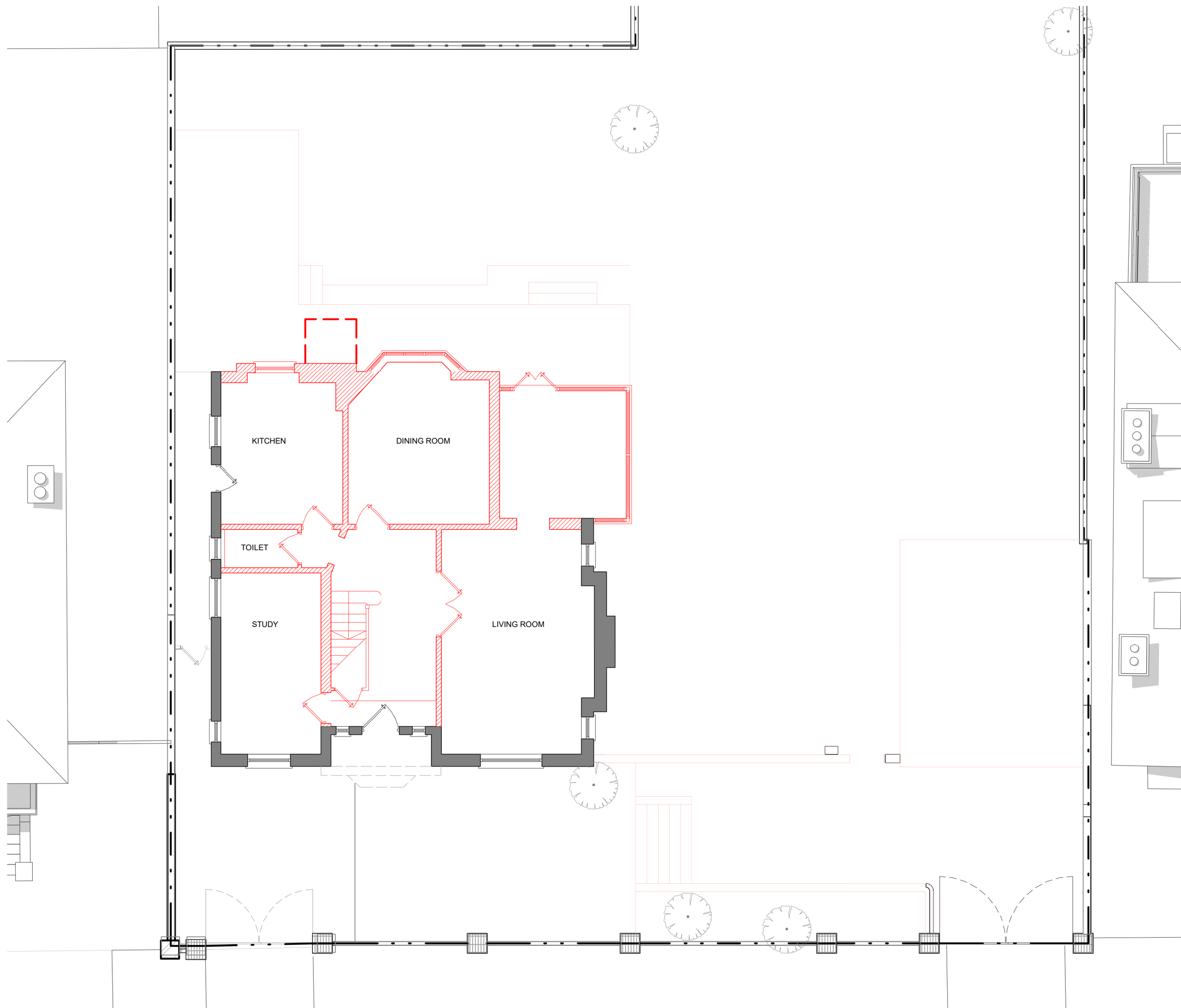
GENERAL NOTES:
 This drawing is copyright of KSR architects.
 This drawing must be read in conjunction with the Designer's Risk Assessment, specification and all other relevant documentation and drawings.
 KSR architects accept no liability for any expense, loss or damage of whatsoever nature and however arising from any variation made to this drawing or in the execution of the work to which it relates which has not been referred to them and their approval obtained.
 Areas are based on unchecked survey and are approximate only.
 Do not scale from this drawing or the digital data, only figured dimensions are to be used. Refer to linear scale for guidance.
 Check all dimensions on site prior to carrying out any works and advise any discrepancy

-  = TO BE DEMOLISHED
-  = PROPOSED OPENINGS / NEW ELEMENTS



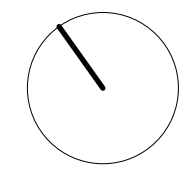
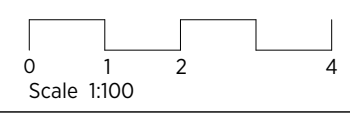
KSR ARCHITECTS & INTERIOR DESIGNERS
 KSR Architects LLP mail@ksrarchitects.com
 14 Greenland Street t: +44 (0)20 7692 5000
 London NW1 0ND www.ksrarchitects.com

12 Eldon Grove
Demolition Ground Floor Site Plan
 Date: 03/02/22 Status: PLANNING
 Scale: 1:200 @ A3 © KSR Architects
 Project Ref: Drawing No: Revision:
 20012-12 D-001



GENERAL NOTES:
 This drawing is copyright of KSR architects.
 This drawing must be read in conjunction with the Designer's Risk Assessment, specification and all other relevant documentation and drawings.
 KSR architects accept no liability for any expense, loss or damage of whatsoever nature and however arising from any variation made to this drawing or in the execution of the work to which it relates which has not been referred to them and their approval obtained.
 Areas are based on unchecked survey and are approximate only.
 Do not scale from this drawing or the digital data, only figured dimensions are to be used. Refer to linear scale for guidance.
 Check all dimensions on site prior to carrying out any works and advise any discrepancy

- = TO BE DEMOLISHED
- = PROPOSED OPENINGS / NEW ELEMENTS



KSR ARCHITECTS & INTERIOR DESIGNERS
 KSR Architects LLP mail@ksrarchitects.com
 14 Greenland Street t: +44 (0)20 7692 5000
 London NW1 0ND www.ksrarchitects.com

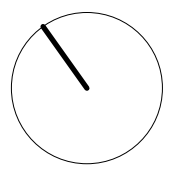
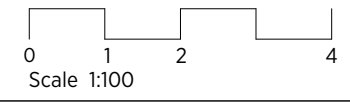
12 Eldon Grove
Demolition Ground Floor

Date: 03/02/22 Status: PLANNING
 Scale: 1:100 @ A3 © KSR Architects
 Project Ref: Drawing No: Revision:
 20012-12 D-100



GENERAL NOTES:
 This drawing is copyright of KSR architects.
 This drawing must be read in conjunction with the Designer's Risk Assessment, specification and all other relevant documentation and drawings.
 KSR architects accept no liability for any expense, loss or damage of whatsoever nature and however arising from any variation made to this drawing or in the execution of the work to which it relates which has not been referred to them and their approval obtained.
 Areas are based on unchecked survey and are approximate only.
 Do not scale from this drawing or the digital data, only figured dimensions are to be used. Refer to linear scale for guidance.
 Check all dimensions on site prior to carrying out any works and advise any discrepancy

— = TO BE DEMOLISHED
 [Blue hatched box] = PROPOSED OPENINGS / NEW ELEMENTS

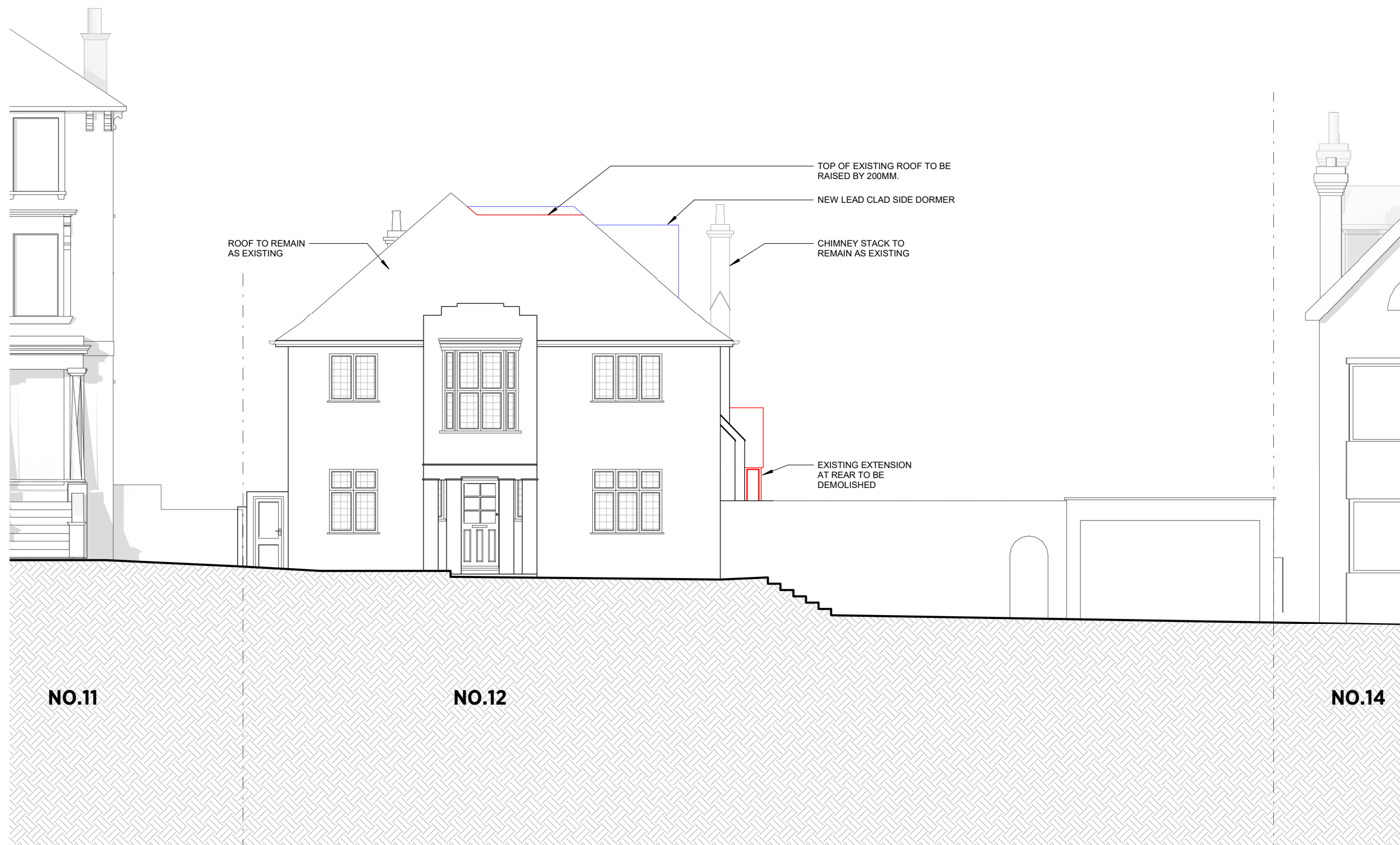


KSR ARCHITECTS & INTERIOR DESIGNERS
 KSR Architects LLP mail@ksrarchitects.com
 14 Greenland Street t: +44 (0)20 7692 5000
 London NW1 0ND www.ksrarchitects.com

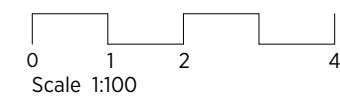
12 Eldon Grove
Demolition First Floor

Date: 03/02/22	Status: PLANNING
Scale: 1:100 @ A3	© KSR Architects
Project Ref: 20012-12	Drawing No: D-110
	Revision:

GENERAL NOTES:
 This drawing is copyright of KSR architects.
 This drawing must be read in conjunction with the Designer's Risk Assessment, specification and all other relevant documentation and drawings.
 KSR architects accept no liability for any expense, loss or damage of whatsoever nature and however arising from any variation made to this drawing or in the execution of the work to which it relates which has not been referred to them and their approval obtained.
 Areas are based on unchecked survey and are approximate only.
 Do not scale from this drawing or the digital data, only figured dimensions are to be used. Refer to linear scale for guidance.
 Check all dimensions on site prior to carrying out any works and advise any discrepancy



— = TO BE DEMOLISHED
 [Hatched Box] = PROPOSED OPENINGS / NEW ELEMENTS




KSR ARCHITECTS & INTERIOR DESIGNERS
 KSR Architects LLP | 14 Greenland Street | London NW1 0ND
 mail@ksrarchitects.com | t: +44 (0)20 7692 5000 | www.ksrarchitects.com

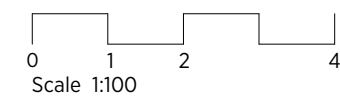
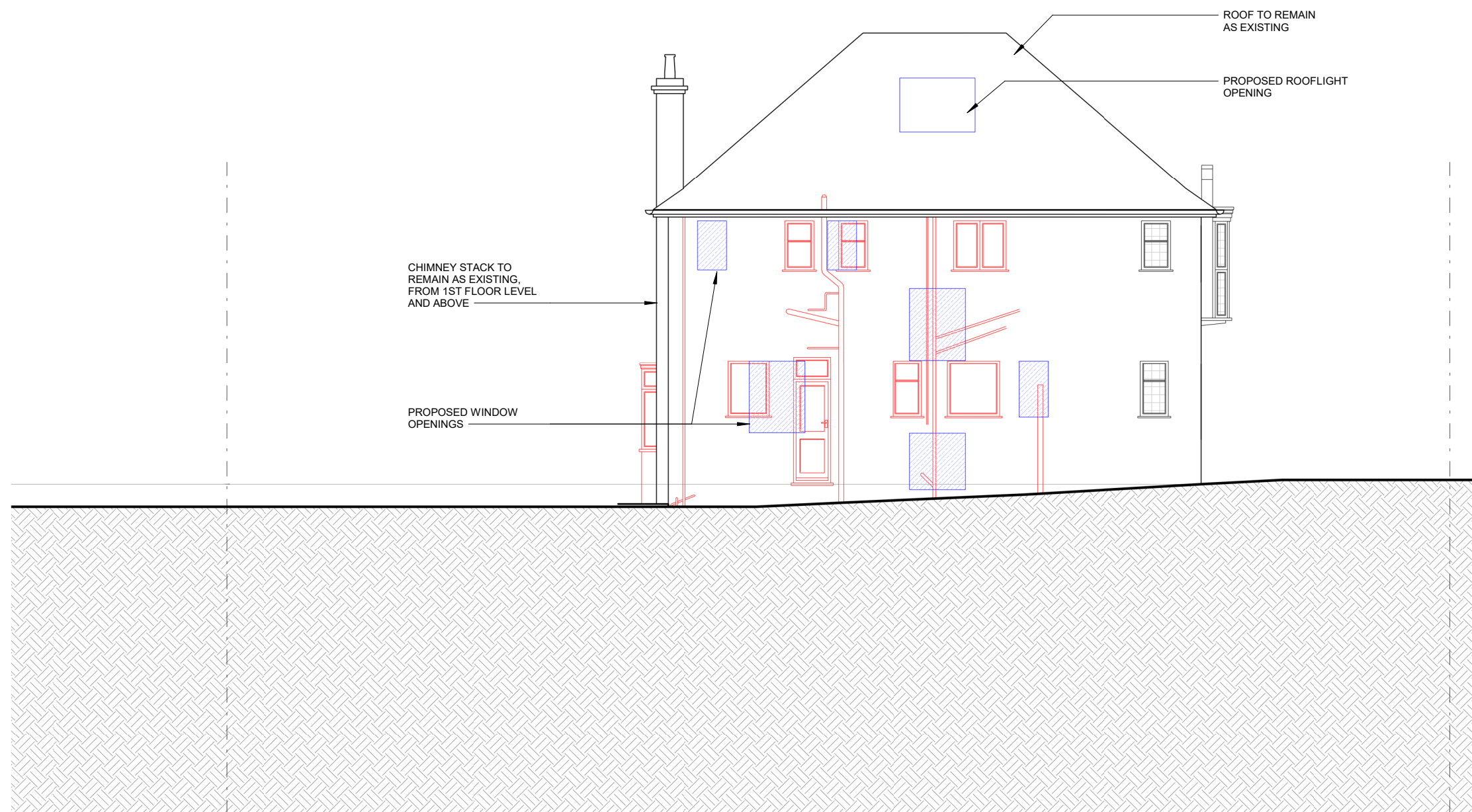
12 Eldon Grove

Demolition Front Elevation

Date: 03/02/22	Status: PLANNING
Scale: 1:100 @ A3	© KSR Architects
Project Ref: 20012-12	Drawing No: D-300
	Revision:

GENERAL NOTES:
 This drawing is copyright of KSR architects.
 This drawing must be read in conjunction with the Designer's Risk Assessment, specification and all other relevant documentation and drawings.
 KSR architects accept no liability for any expense, loss or damage of whatsoever nature and however arising from any variation made to this drawing or in the execution of the work to which it relates which has not been referred to them and their approval obtained.
 Areas are based on unchecked survey and are approximate only.
 Do not scale from this drawing or the digital data, only figured dimensions are to be used. Refer to linear scale for guidance.
 Check all dimensions on site prior to carrying out any works and advise any discrepancy

— = TO BE DEMOLISHED
 = PROPOSED OPENINGS / NEW ELEMENTS



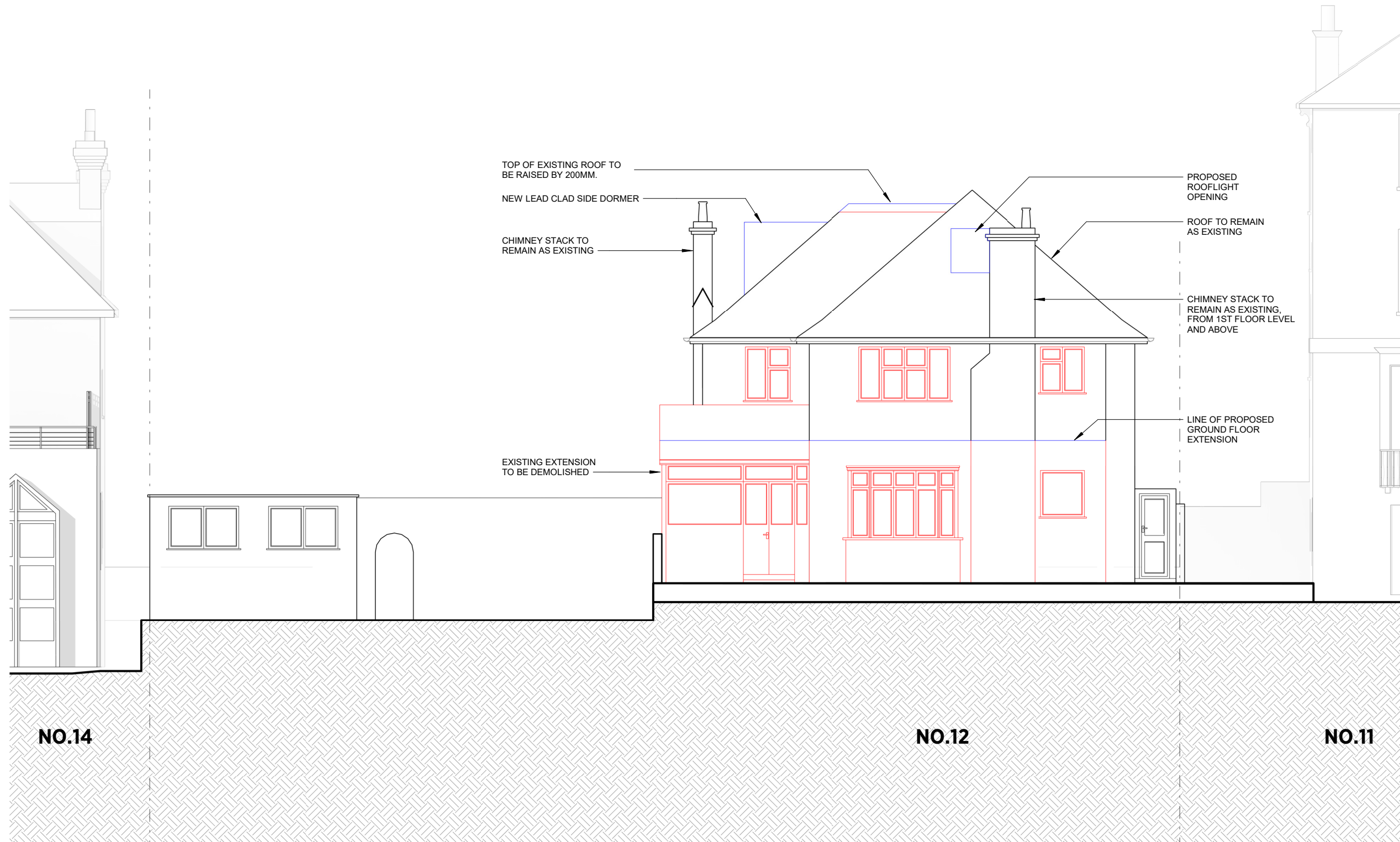
KSR ARCHITECTS & INTERIOR DESIGNERS
 KSR Architects LLP mail@ksrarchitects.com
 14 Greenland Street t: +44 (0)20 7692 5000
 London NW1 0ND www.ksrarchitects.com

12 Eldon Grove

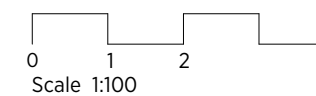
Demolition Side Elevation 1

Date: 03/02/22	Status: PLANNING
Scale: 1:100 @ A3	© KSR Architects
Project Ref: 20012-12	Drawing No: D-301
	Revision:

GENERAL NOTES:
 This drawing is copyright of KSR architects.
 This drawing must be read in conjunction with the Designer's Risk Assessment, specification and all other relevant documentation and drawings.
 KSR architects accept no liability for any expense, loss or damage of whatsoever nature and however arising from any variation made to this drawing or in the execution of the work to which it relates which has not been referred to them and their approval obtained.
 Areas are based on unchecked survey and are approximate only.
 Do not scale from this drawing or the digital data, only figured dimensions are to be used. Refer to linear scale for guidance.
 Check all dimensions on site prior to carrying out any works and advise any discrepancy



— = TO BE DEMOLISHED
 [Blue Hatched Box] = PROPOSED OPENINGS / NEW ELEMENTS




KSR ARCHITECTS & INTERIOR DESIGNERS
 KSR Architects LLP | 14 Greenland Street | London NW1 0ND
 t: +44 (0)20 7692 5000 | mail@ksrarchitects.com | www.ksrarchitects.com

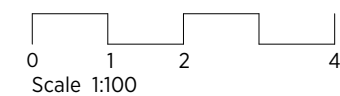
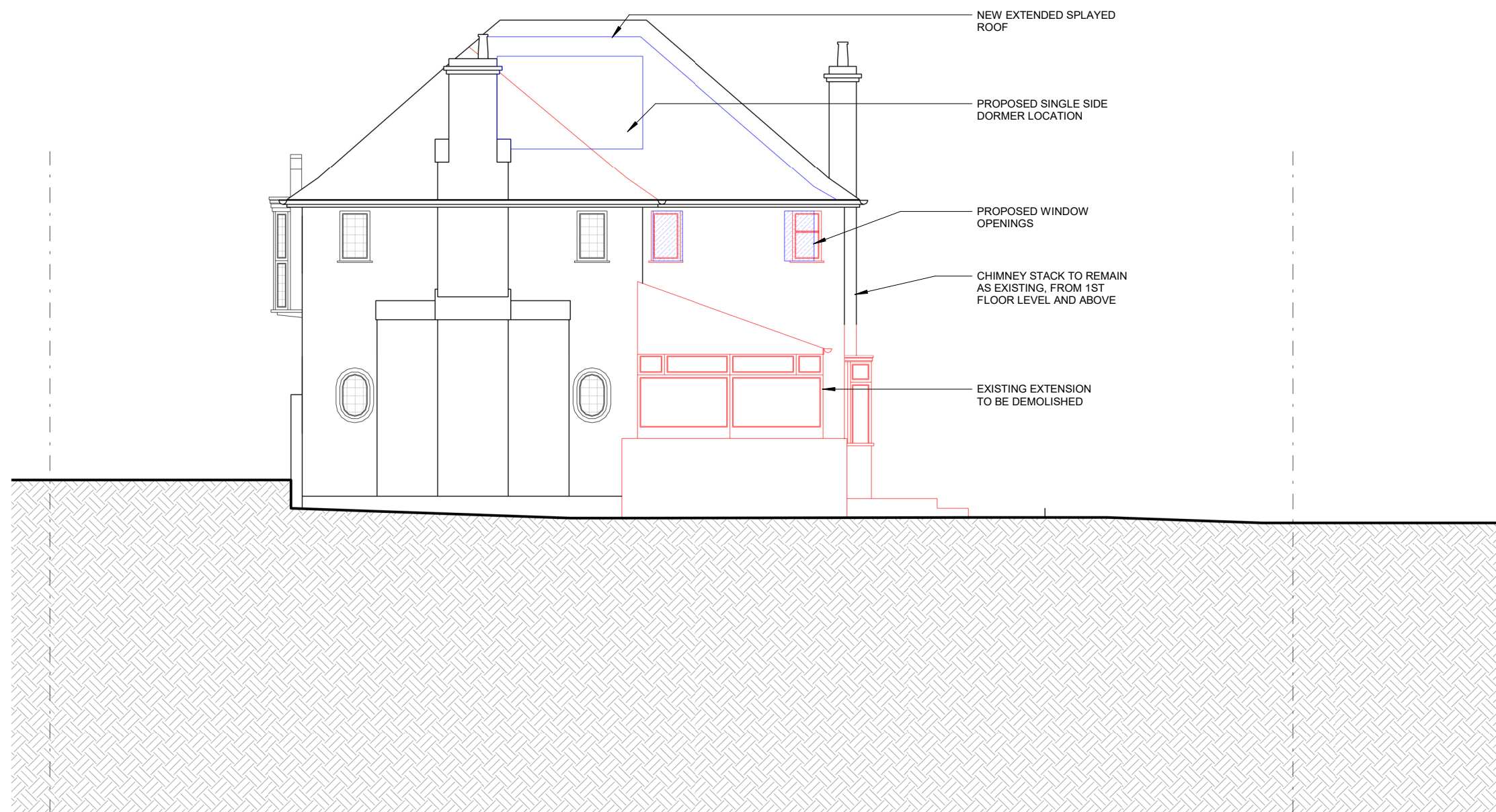
12 Eldon Grove

Demolition Rear Elevation

Date: 03/02/22	Status: PLANNING
Scale: 1:100 @ A3	© KSR Architects
Project Ref: 20012-12	Drawing No: D-302
	Revision:

GENERAL NOTES:
 This drawing is copyright of KSR architects.
 This drawing must be read in conjunction with the Designer's Risk Assessment, specification and all other relevant documentation and drawings.
 KSR architects accept no liability for any expense, loss or damage of whatsoever nature and however arising from any variation made to this drawing or in the execution of the work to which it relates which has not been referred to them and their approval obtained.
 Areas are based on unchecked survey and are approximate only.
 Do not scale from this drawing or the digital data, only figured dimensions are to be used. Refer to linear scale for guidance.
 Check all dimensions on site prior to carrying out any works and advise any discrepancy

— = TO BE DEMOLISHED
 = PROPOSED OPENINGS / NEW ELEMENTS



KSR ARCHITECTS & INTERIOR DESIGNERS
 KSR Architects LLP mail@ksrarchitects.com
 14 Greenland Street t: +44 (0)20 7692 5000
 London NW1 0ND www.ksrarchitects.com

12 Eldon Grove

Demolition Side Elevation 2

Date: 03/02/22	Status: PLANNING
Scale: 1:100 @ A3	© KSR Architects
Project Ref: 20012-12	Drawing No: D-303
	Revision: