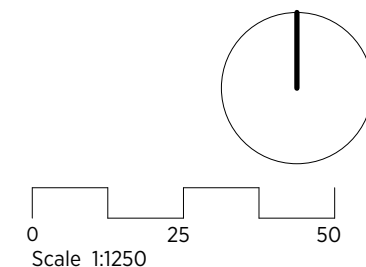


GENERAL NOTES:
This drawing is copyright of KSR architects.
This drawing must be read in conjunction with the Designer's Risk Assessment, specification and all other relevant documentation and drawings.
KSR architects accept no liability for any expense, loss or damage of whatsoever nature and however arising from any variation made to this drawing or in the execution of the work to which it relates which has not been referred to them and their approval obtained.
Areas are based on unchecked survey and are approximate only.
Do not scale from this drawing or the digital data, only figured dimensions are to be used. Refer to linear scale for guidance.
Check all dimensions on site prior to carrying out any works and advise any discrepancy

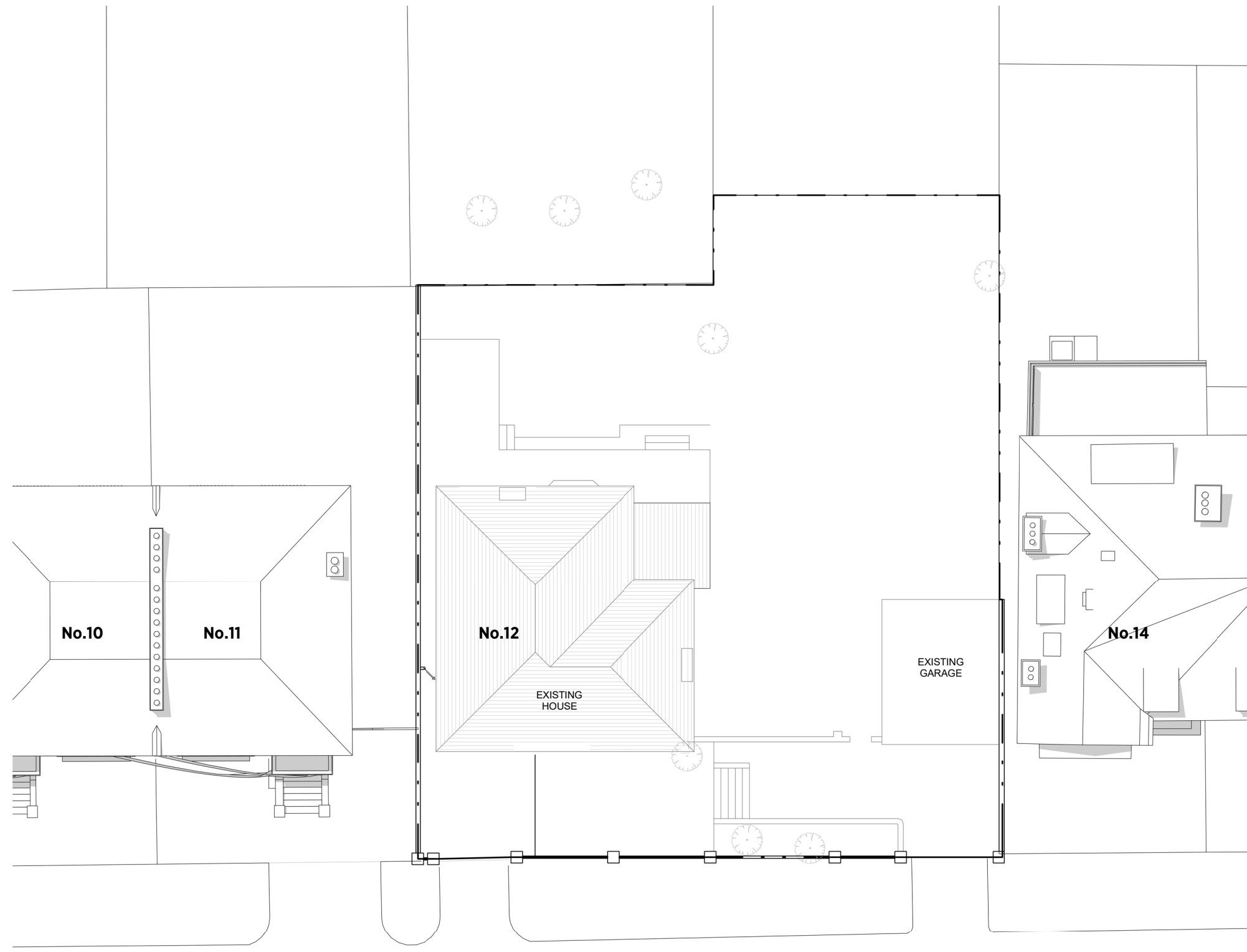


KSR ARCHITECTS & INTERIOR DESIGNERS
KSR Architects LLP mail@ksrarchitects.com
14 Greenland Street t: +44 (0)20 7692 5000
London NW1 0ND www.ksrarchitects.com

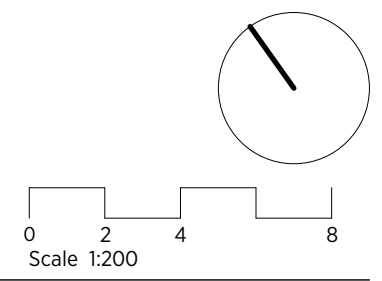
12 Eldon Grove

Location Plan

Date: 03/02/22	Status: PLANNING
Scale: 1:1250	© KSR Architects
Project Ref: 20012-12	Drawing No: E-001
	Revision:



GENERAL NOTES:
 This drawing is copyright of KSR architects.
 This drawing must be read in conjunction with the Designer's Risk Assessment, specification and all other relevant documentation and drawings.
 KSR architects accept no liability for any expense, loss or damage of whatsoever nature and however arising from any variation made to this drawing or in the execution of the work to which it relates which has not been referred to them and their approval obtained.
 Areas are based on unchecked survey and are approximate only.
 Do not scale from this drawing or the digital data, only figured dimensions are to be used. Refer to linear scale for guidance.
 Check all dimensions on site prior to carrying out any works and advise any discrepancy



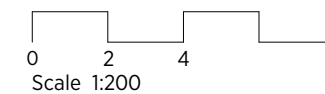
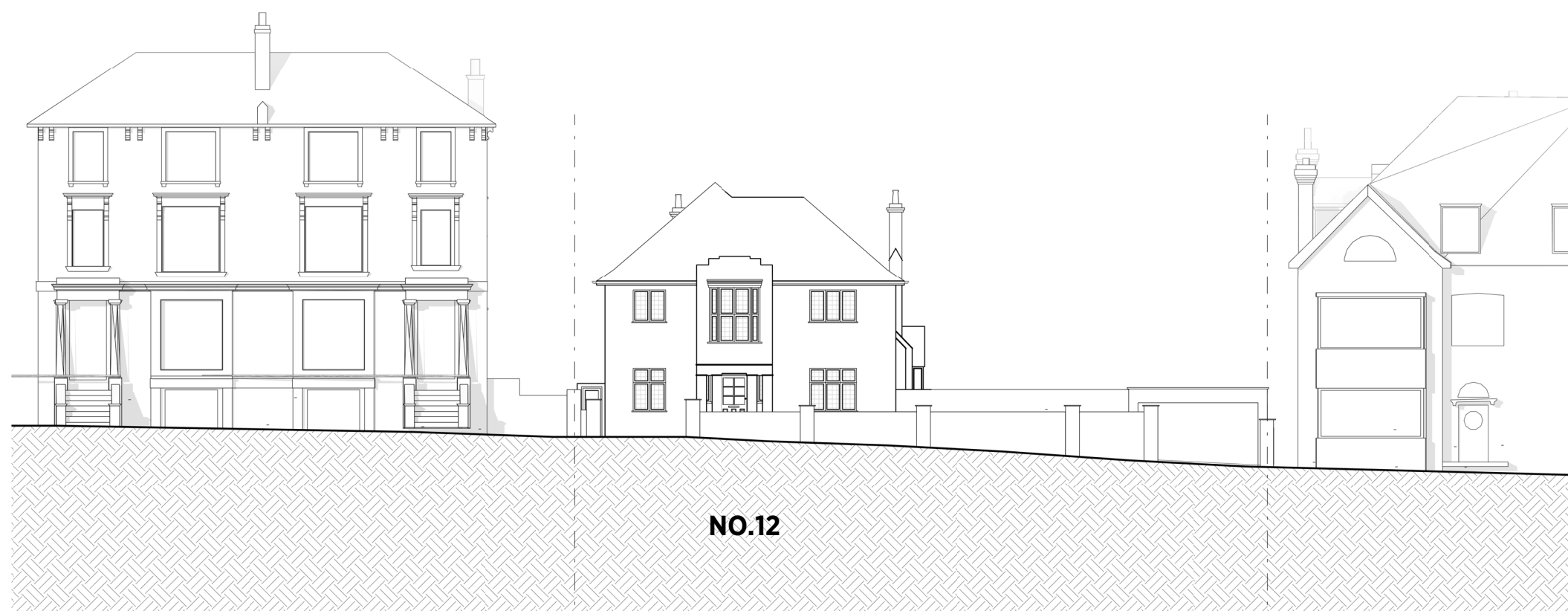
KSR ARCHITECTS & INTERIOR DESIGNERS
 KSR Architects LLP mail@ksrarchitects.com
 14 Greenland Street t: +44 (0)20 7692 5000
 London NW1 0ND www.ksrarchitects.com

12 Eldon Grove

Existing Site Plan

Date: 03/02/22	Status: PLANNING
Scale: 1:200 @ A3	© KSR Architects
Project Ref: 20012-12	Drawing No: E-002
	Revision:

GENERAL NOTES:
This drawing is copyright of KSR architects.
This drawing must be read in conjunction with the Designer's Risk Assessment, specification and all other relevant documentation and drawings.
KSR architects accept no liability for any expense, loss or damage of whatsoever nature and however arising from any variation made to this drawing or in the execution of the work to which it relates which has not been referred to them and their approval obtained.
Areas are based on unchecked survey and are approximate only.
Do not scale from this drawing or the digital data, only figured dimensions are to be used. Refer to linear scale for guidance.
Check all dimensions on site prior to carrying out any works and advise any discrepancy



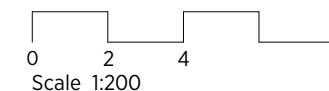
KSR ARCHITECTS & INTERIOR DESIGNERS
KSR Architects LLP mail@ksrarchitects.com
14 Greenland Street t: +44 (0)20 7692 5000
London NW1 0ND www.ksrarchitects.com

12 Eldon Grove

Existing Street Elevation

Date: 03/02/22	Status: PLANNING
Scale: 1:200 @ A3	© KSR Architects
Project Ref: 20012-12	Drawing No: E-003
	Revision:

GENERAL NOTES:
This drawing is copyright of KSR architects.
This drawing must be read in conjunction with the Designer's Risk Assessment, specification and all other relevant documentation and drawings.
KSR architects accept no liability for any expense, loss or damage of whatsoever nature and however arising from any variation made to this drawing or in the execution of the work to which it relates which has not been referred to them and their approval obtained.
Areas are based on unchecked survey and are approximate only.
Do not scale from this drawing or the digital data, only figured dimensions are to be used. Refer to linear scale for guidance.
Check all dimensions on site prior to carrying out any works and advise any discrepancy



KSR ARCHITECTS & INTERIOR DESIGNERS

KSR Architects LLP
14 Greenland Street
London NW1 0ND

mail@ksrarchitects.com
t: +44 (0)20 7692 5000
www.ksrarchitects.com

12 Eldon Grove

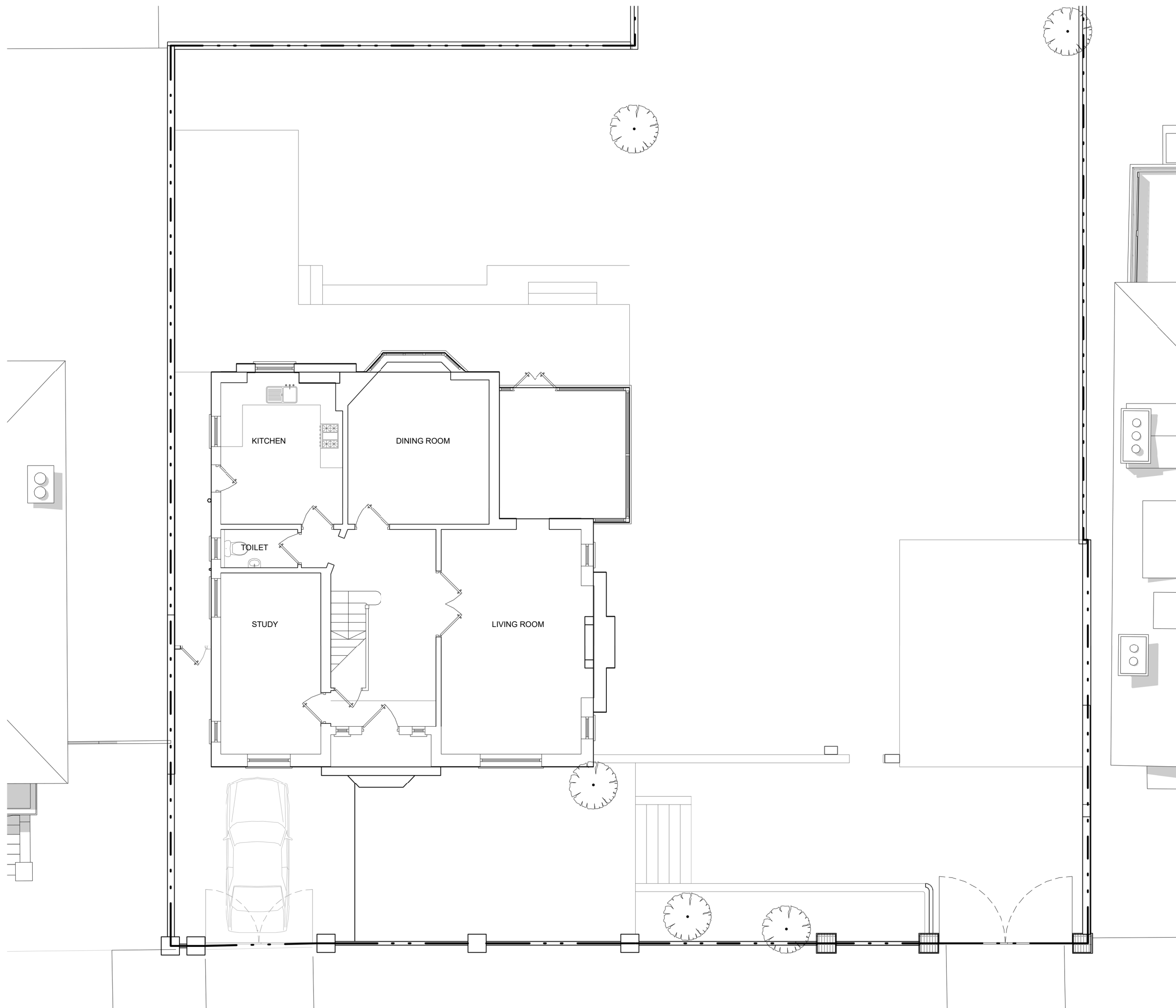
Existing Rear Elevation

Date: 03/02/22 Status: PLANNING

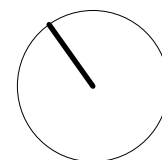
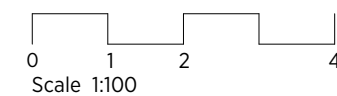
Scale: 1:200 @ A3 © KSR Architects

Project Ref: Drawing No: Revision:

20012-12 E-004



GENERAL NOTES:
 This drawing is copyright of KSR architects.
 This drawing must be read in conjunction with the Designer's Risk Assessment, specification and all other relevant documentation and drawings.
 KSR architects accept no liability for any expense, loss or damage of whatsoever nature and however arising from any variation made to this drawing or in the execution of the work to which it relates which has not been referred to them and their approval obtained.
 Areas are based on unchecked survey and are approximate only.
 Do not scale from this drawing or the digital data, only figured dimensions are to be used. Refer to linear scale for guidance.
 Check all dimensions on site prior to carrying out any works and advise any discrepancy

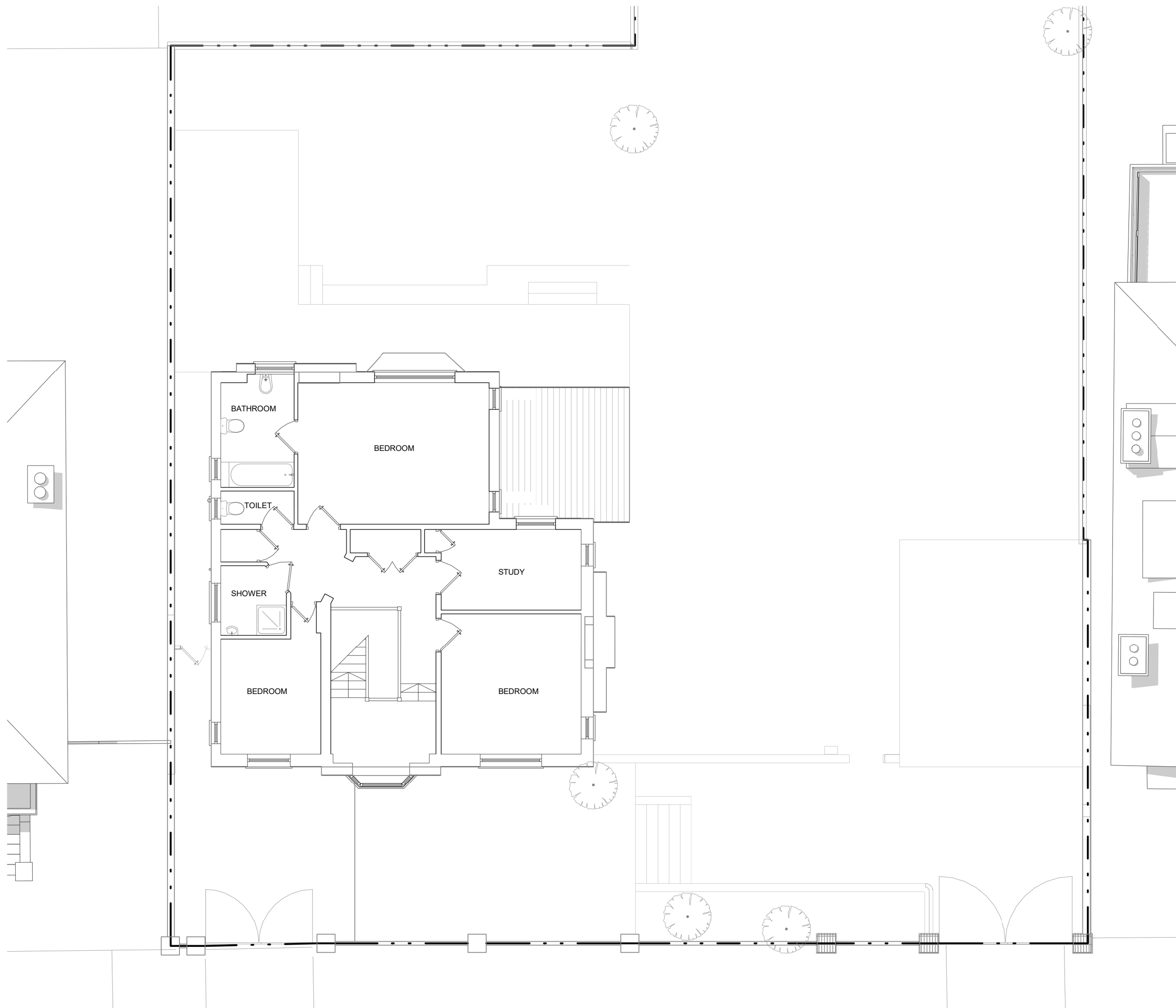


KSR ARCHITECTS & INTERIOR DESIGNERS
 KSR Architects LLP mail@ksrarchitects.com
 14 Greenland Street t: +44 (0)20 7692 5000
 London NW1 0ND www.ksrarchitects.com

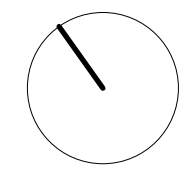
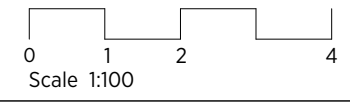
12 Eldon Grove

Existing Ground Floor Plan

Date: 03/02/22	Status: PLANNING
Scale: 1:100 @ A3	© KSR Architects
Project Ref: 20012-12	Drawing No: E-100
	Revision:



GENERAL NOTES:
 This drawing is copyright of KSR architects.
 This drawing must be read in conjunction with the Designer's Risk Assessment, specification and all other relevant documentation and drawings.
 KSR architects accept no liability for any expense, loss or damage of whatsoever nature and however arising from any variation made to this drawing or in the execution of the work to which it relates which has not been referred to them and their approval obtained.
 Areas are based on unchecked survey and are approximate only.
 Do not scale from this drawing or the digital data, only figured dimensions are to be used. Refer to linear scale for guidance.
 Check all dimensions on site prior to carrying out any works and advise any discrepancy

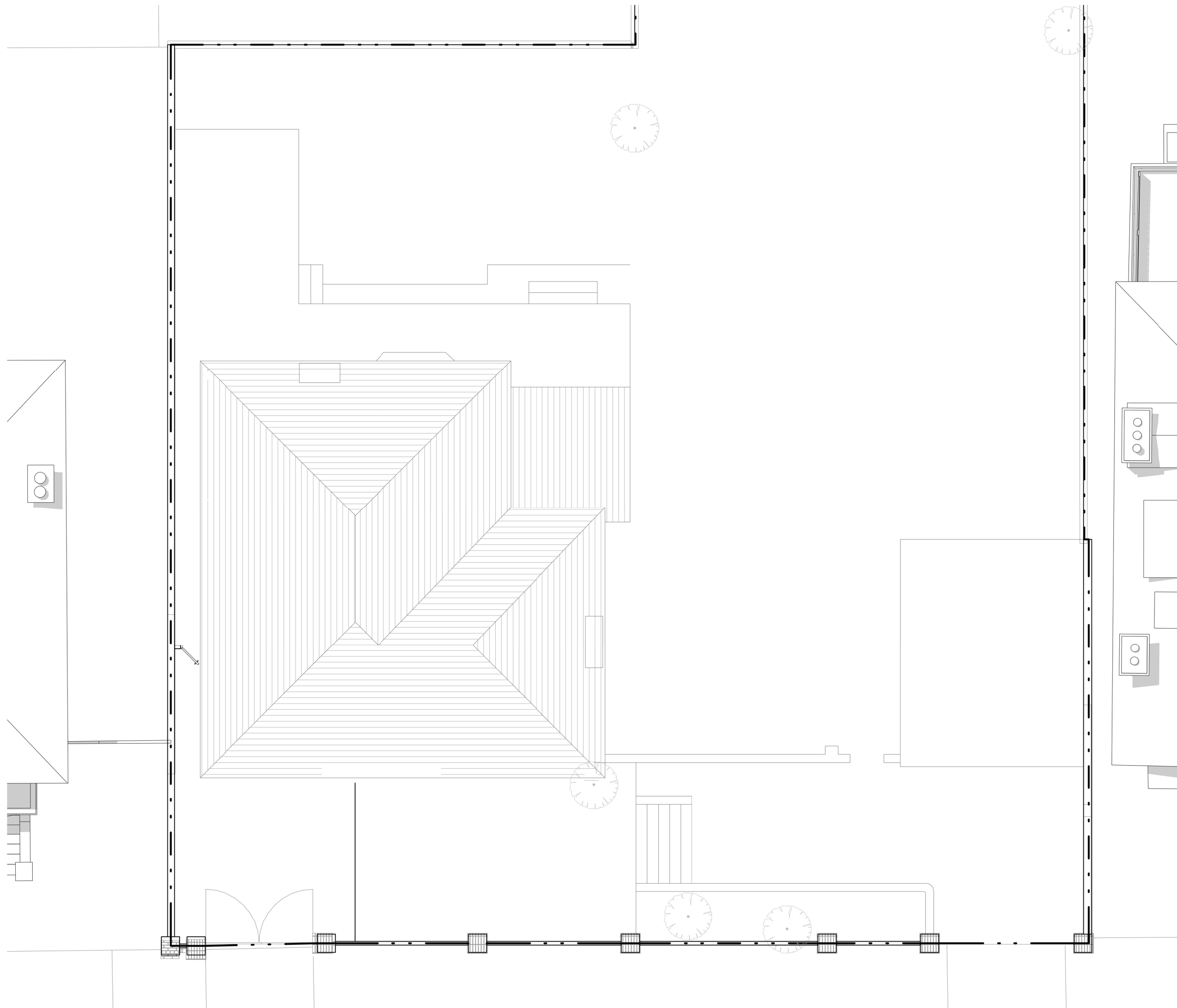


KSR ARCHITECTS & INTERIOR DESIGNERS
 KSR Architects LLP mail@ksrarchitects.com
 14 Greenland Street t: +44 (0)20 7692 5000
 London NW1 6ND www.ksrarchitects.com

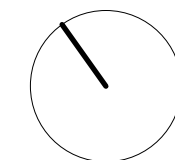
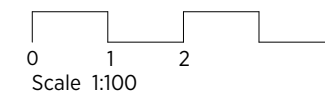
12 Eldon Grove

Existing First Floor Plan

Date: 03/02/22	Status: PLANNING
Scale: 1:100 @ A3	© KSR Architects
Project Ref: 20012-12	Drawing No: E-110
	Revision:



GENERAL NOTES:
 This drawing is copyright of KSR architects.
 This drawing must be read in conjunction with the Designer's Risk Assessment, specification and all other relevant documentation and drawings.
 KSR architects accept no liability for any expense, loss or damage of whatsoever nature and however arising from any variation made to this drawing or in the execution of the work to which it relates which has not been referred to them and their approval obtained.
 Areas are based on unchecked survey and are approximate only.
 Do not scale from this drawing or the digital data, only figured dimensions are to be used. Refer to linear scale for guidance.
 Check all dimensions on site prior to carrying out any works and advise any discrepancy



KSR ARCHITECTS & INTERIOR DESIGNERS

KSR Architects LLP
 14 Greenland Street
 London NW1 0ND

mail@ksrarchitects.com
 t: +44 (0)20 7692 5000
 www.ksrarchitects.com

12 Eldon Grove

Existing Roof Plan

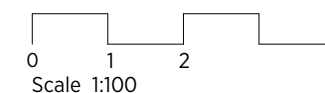
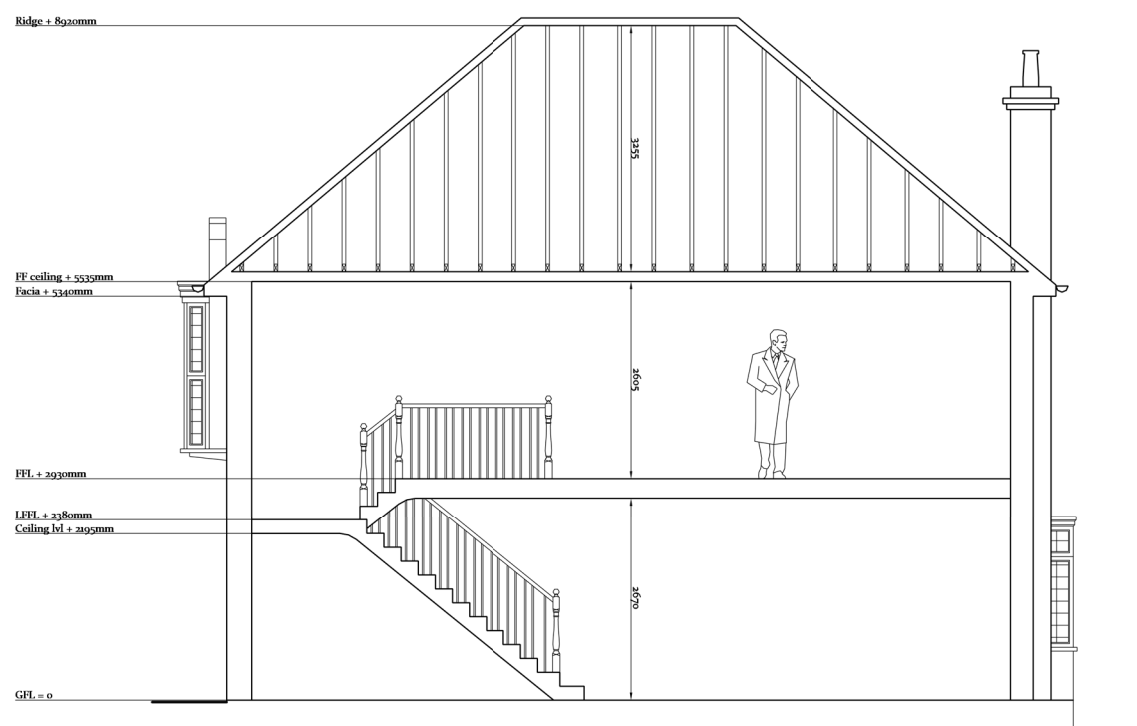
Date: 03/02/22 Status: PLANNING

Scale: 1:100 @ A3 © KSR Architects

Project Ref: Drawing No: Revision:

20012-12 E-130

GENERAL NOTES:
 This drawing is copyright of KSR architects.
 This drawing must be read in conjunction with the Designer's Risk Assessment, specification and all other relevant documentation and drawings.
 KSR architects accept no liability for any expense, loss or damage of whatsoever nature and however arising from any variation made to this drawing or in the execution of the work to which it relates which has not been referred to them and their approval obtained.
 Areas are based on unchecked survey and are approximate only.
 Do not scale from this drawing or the digital data, only figured dimensions are to be used. Refer to linear scale for guidance.
 Check all dimensions on site prior to carrying out any works and advise any discrepancy



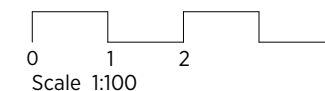
KSR ARCHITECTS & INTERIOR DESIGNERS
 KSR Architects LLP mail@ksrarchitects.com
 14 Greenland Street t: +44 (0)20 7692 5000
 London NW1 0ND www.ksrarchitects.com

12 Eldon Grove

Existing Section

Date: 03/02/22	Status: PLANNING
Scale: 1:100 @ A3	© KSR Architects
Project Ref: 20012-12	Drawing No: E-200
	Revision:

GENERAL NOTES:
 This drawing is copyright of KSR architects.
 This drawing must be read in conjunction with the Designer's Risk Assessment, specification and all other relevant documentation and drawings.
 KSR architects accept no liability for any expense, loss or damage of whatsoever nature and however arising from any variation made to this drawing or in the execution of the work to which it relates which has not been referred to them and their approval obtained.
 Areas are based on unchecked survey and are approximate only.
 Do not scale from this drawing or the digital data, only figured dimensions are to be used. Refer to linear scale for guidance.
 Check all dimensions on site prior to carrying out any works and advise any discrepancy



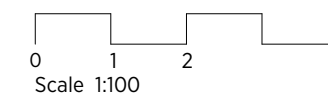
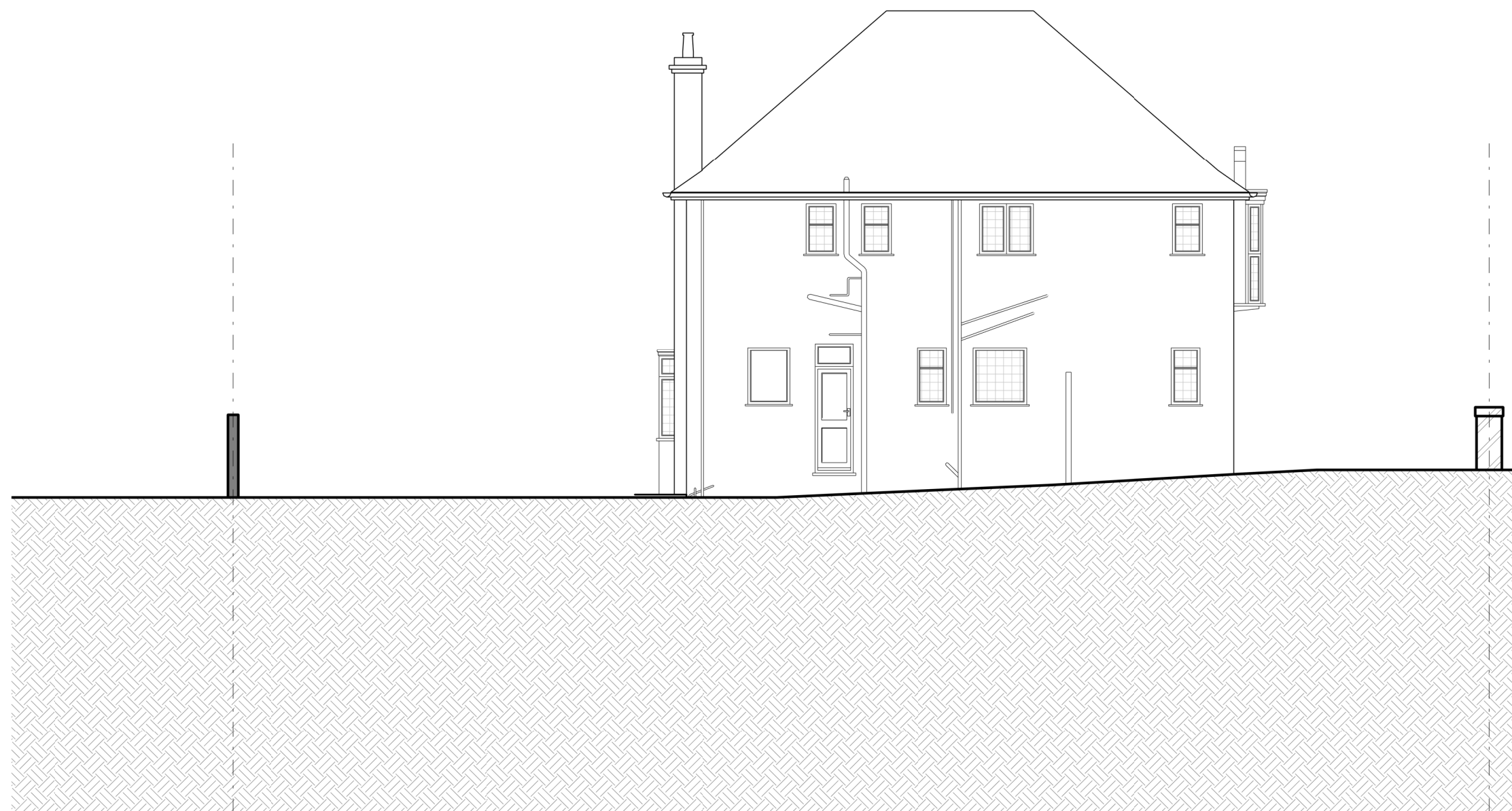
KSR ARCHITECTS & INTERIOR DESIGNERS
 KSR Architects LLP mail@ksrarchitects.com
 14 Greenland Street t: +44 (0)20 7692 5000
 London NW1 0ND www.ksrarchitects.com

12 Eldon Grove

Existing Front Elevation

Date: 03/02/22	Status: PLANNING
Scale: 1:100 @ A3	© KSR Architects
Project Ref: 20012-12	Drawing No: E-300
	Revision:

GENERAL NOTES:
This drawing is copyright of KSR architects.
This drawing must be read in conjunction with the Designer's Risk Assessment, specification and all other relevant documentation and drawings.
KSR architects accept no liability for any expense, loss or damage of whatsoever nature and however arising from any variation made to this drawing or in the execution of the work to which it relates which has not been referred to them and their approval obtained.
Areas are based on unchecked survey and are approximate only.
Do not scale from this drawing or the digital data, only figured dimensions are to be used. Refer to linear scale for guidance.
Check all dimensions on site prior to carrying out any works and advise any discrepancy



KSR ARCHITECTS & INTERIOR DESIGNERS

KSR Architects LLP
14 Greenland Street
London NW1 0ND

mail@ksrarchitects.com
t: +44 (0)20 7692 5000
www.ksrarchitects.com

12 Eldon Grove

Existing Side Elevation 1

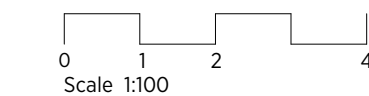
Date: 03/02/22 Status: PLANNING

Scale: 1:100 @ A3 © KSR Architects

Project Ref: Drawing No: Revision:

20012-12 E-301

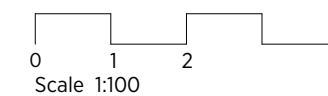
GENERAL NOTES:
 This drawing is copyright of KSR architects.
 This drawing must be read in conjunction with the Designer's Risk Assessment, specification and all other relevant documentation and drawings.
 KSR architects accept no liability for any expense, loss or damage of whatsoever nature and however arising from any variation made to this drawing or in the execution of the work to which it relates which has not been referred to them and their approval obtained.
 Areas are based on unchecked survey and are approximate only.
 Do not scale from this drawing or the digital data, only figured dimensions are to be used. Refer to linear scale for guidance.
 Check all dimensions on site prior to carrying out any works and advise any discrepancy



KSR ARCHITECTS & INTERIOR DESIGNERS
 KSR Architects LLP mail@ksrarchitects.com
 14 Greenland Street t: +44 (0)20 7692 5000
 London NW1 0ND www.ksrarchitects.com

12 Eldon Grove
 Existing Rear Elevation
 Date: 03/02/22 Status: PLANNING
 Scale: 1:100 @ A3 © KSR Architects
 Project Ref: Drawing No: Revision:
 20012-12 E-302

GENERAL NOTES:
This drawing is copyright of KSR architects.
This drawing must be read in conjunction with the Designer's Risk Assessment, specification and all other relevant documentation and drawings.
KSR architects accept no liability for any expense, loss or damage of whatsoever nature and however arising from any variation made to this drawing or in the execution of the work to which it relates which has not been referred to them and their approval obtained.
Areas are based on unchecked survey and are approximate only.
Do not scale from this drawing or the digital data, only figured dimensions are to be used. Refer to linear scale for guidance.
Check all dimensions on site prior to carrying out any works and advise any discrepancy



KSR ARCHITECTS & INTERIOR DESIGNERS
KSR Architects LLP mail@ksrarchitects.com
14 Greenland Street t: +44 (0)20 7692 5000
London NW1 0ND www.ksrarchitects.com

12 Eldon Grove

Existing Side Elevation 2

Date: 03/02/22	Status: PLANNING
Scale: 1:100 @ A3	© KSR Architects
Project Ref: 20012-12	Drawing No: E-303
	Revision: