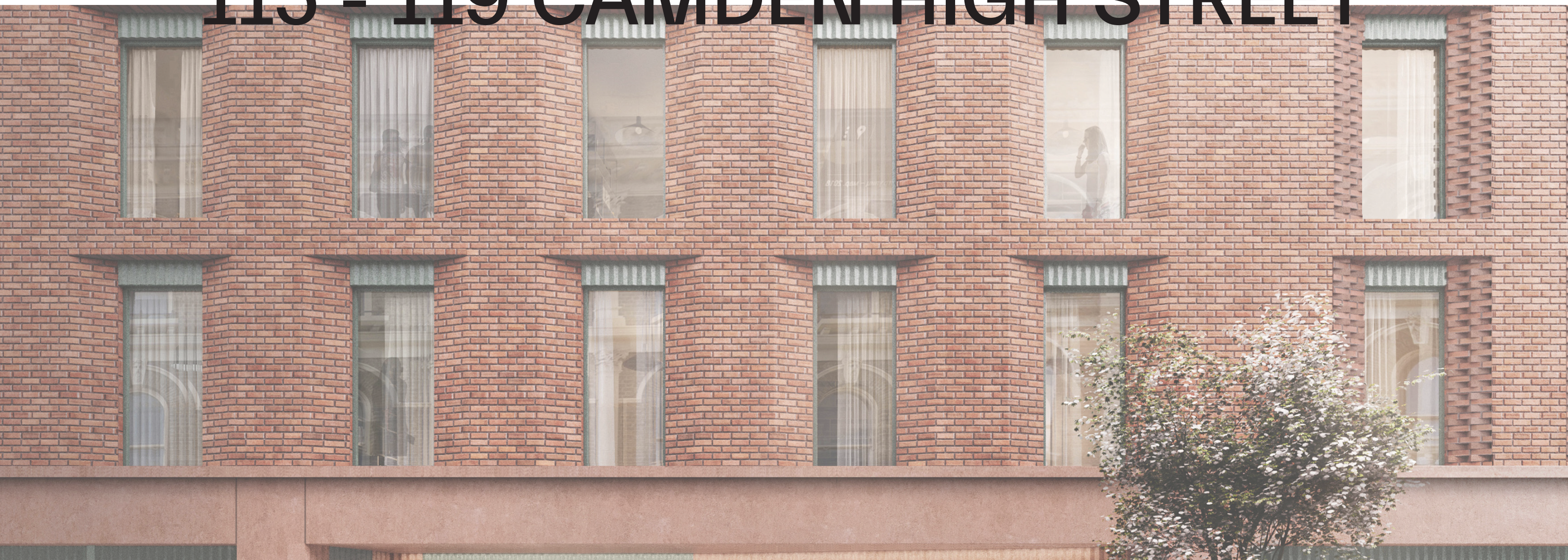


115 - 119 CAMDEN HIGH STREET



Index

- 1. Introduction
- 2. Material Presented at Planning Application
- 3. Proposed Materials

1. Introduction

1.1 Introduction

This document is intended to inform of the material samples for 115–119 Camden High Street scheme that have been approved by Morris+Company at current Stage 5.

During this stage Morris+Company has worked in close collaboration with the executive architect, AXIOM, and the contractor Gilbert Ash, in order to select the most appropriate materials that preserve the design intent for the facade and also guarantee a correct buildability, durability and architectural quality of the external envelope.

The proposed materials included in this document are the following:

- Brick cladding
- Reconstituted stone
- Mortar

Roles and Responsibility

Client and Project Manager: Demar Holdings

Executive Architects: AXIOM
Responsible for technical construction information

Contractor: Gilbert Ash

Design Guardian: Morris+Company
Advising on preservation of original design intent from the approved planning scheme.



Above
CGI view of the proposal

2. Material Presented at Planning Application

2.1 Proposed Material Palette at Planning Application

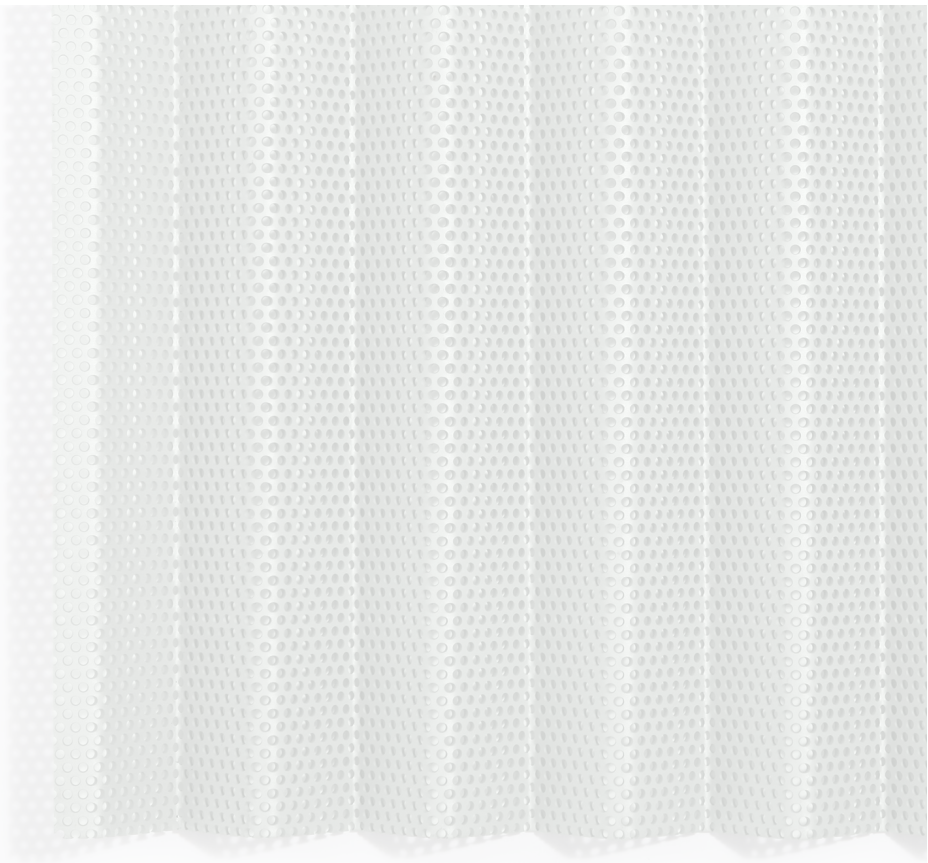
The proposed material palette included in the design and Access Statement is shown in this page, being the materials that have now been approved by Morris and Company highlighted: brick and reconstituted stone.

Brick is the predominant building material in the Camden Conservation Area and a natural choice for the proposal. A well chosen brick can give a timeless and durable finish that weathers gracefully.

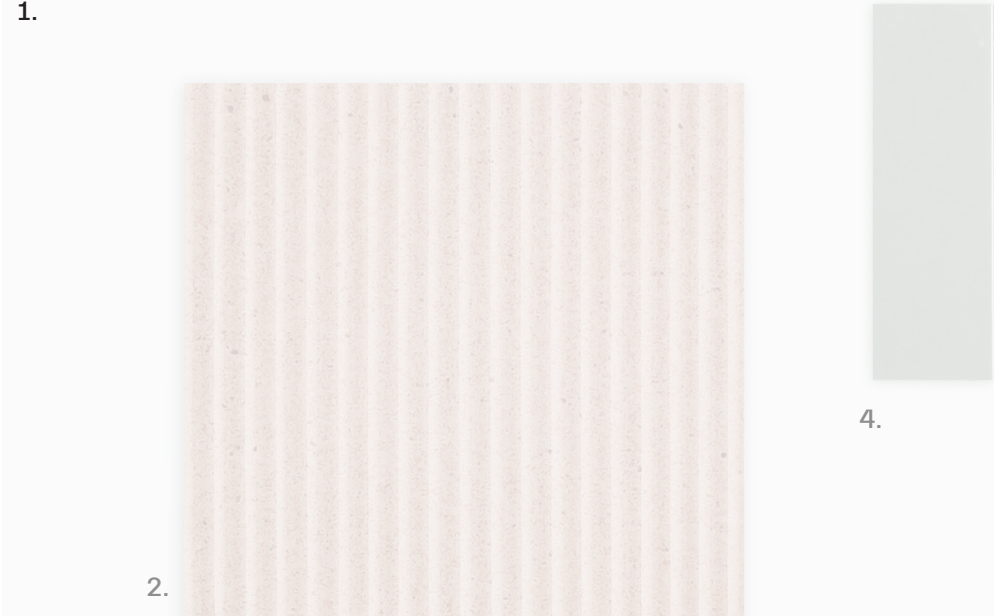
Reconstituted stone used on the ground floor and parapets draws reference from the heavy use of Stucco on the ground floors of the Georgian parades and helps to define and celebrate the High street.



1.



3.



2.

4.



5.

- 1. Pigmented reconstituted stone with a consistent aggregate type and size range. Colour matched to the brick
- 2. Pigmented reconstituted stone, hue to match ground floor pre-cast and fluted texture to reflect 'zig-zag' panels
- 3. 'zig-zag' aluminium powder coated with a green hue. Elements perforated above windows for ventilation purposes and solid when used for decorative purposes on the ground floor and residential unit.
- 4. Aluminium powder coated with a green hue, for window frames, doors and balustrades.
- 5. Brickwork in a warm red/orange hue, to reflect the neighbouring Victorian high street buildings. Laid in stretcher bond with flush mortar joints