

1 FIREPLACE LOCATION PLAN
Scale: 1:100

DESCRIPTION OF PROPOSED FIREPLACE

Selected product - Dimplex Silverton SVT20

Combining state-of-the-art technology with a traditional basket fire design, the Silverton offers the patented Optimyst smoke effect together with a glowing ash bed to create a stunningly realistic open fire effect. Built with existing or unused fireplaces in mind, the Silverton fills the blank space to brighten your room and provide a cosy, realistic focal point. With no heat output, the basket fire can be used year round to create a magical glow and the incredible Optimyst flame and smoke effects add instant ambience to your once forgotten space.



HISTORIC PHOTOGRAPH
Camden Place Lobby



Photograph shows fireplace in the late 1920s

CURRENT PHOTOGRAPH
Koko

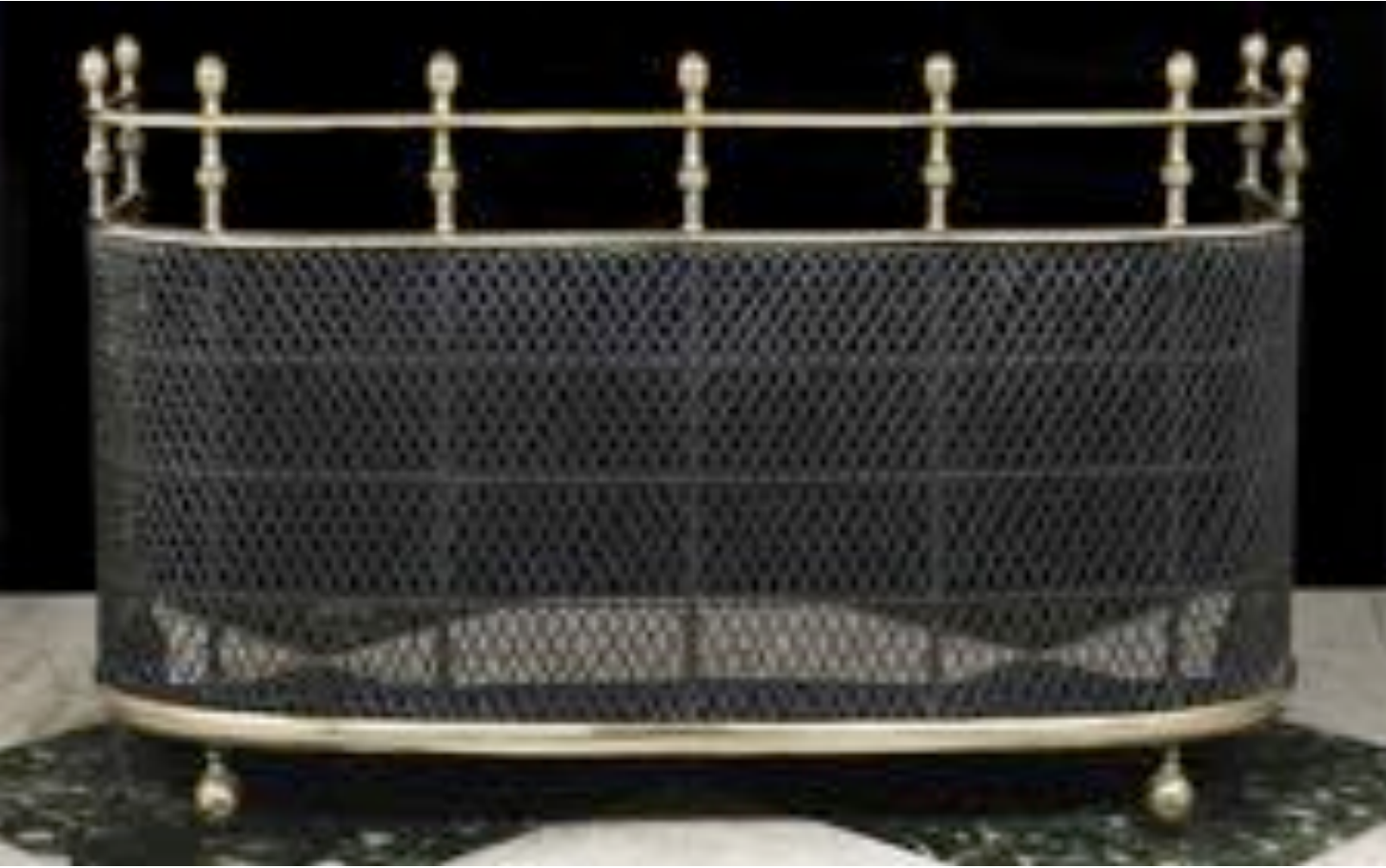


CURRENT STATE



Joinery (timber doors) to be removed and fireplace re-instated

PROPOSED DECORATIVE FIRE GUARD



Brass and mesh - traditional appearance.

PRODUCT SPECIFICATION SHEET

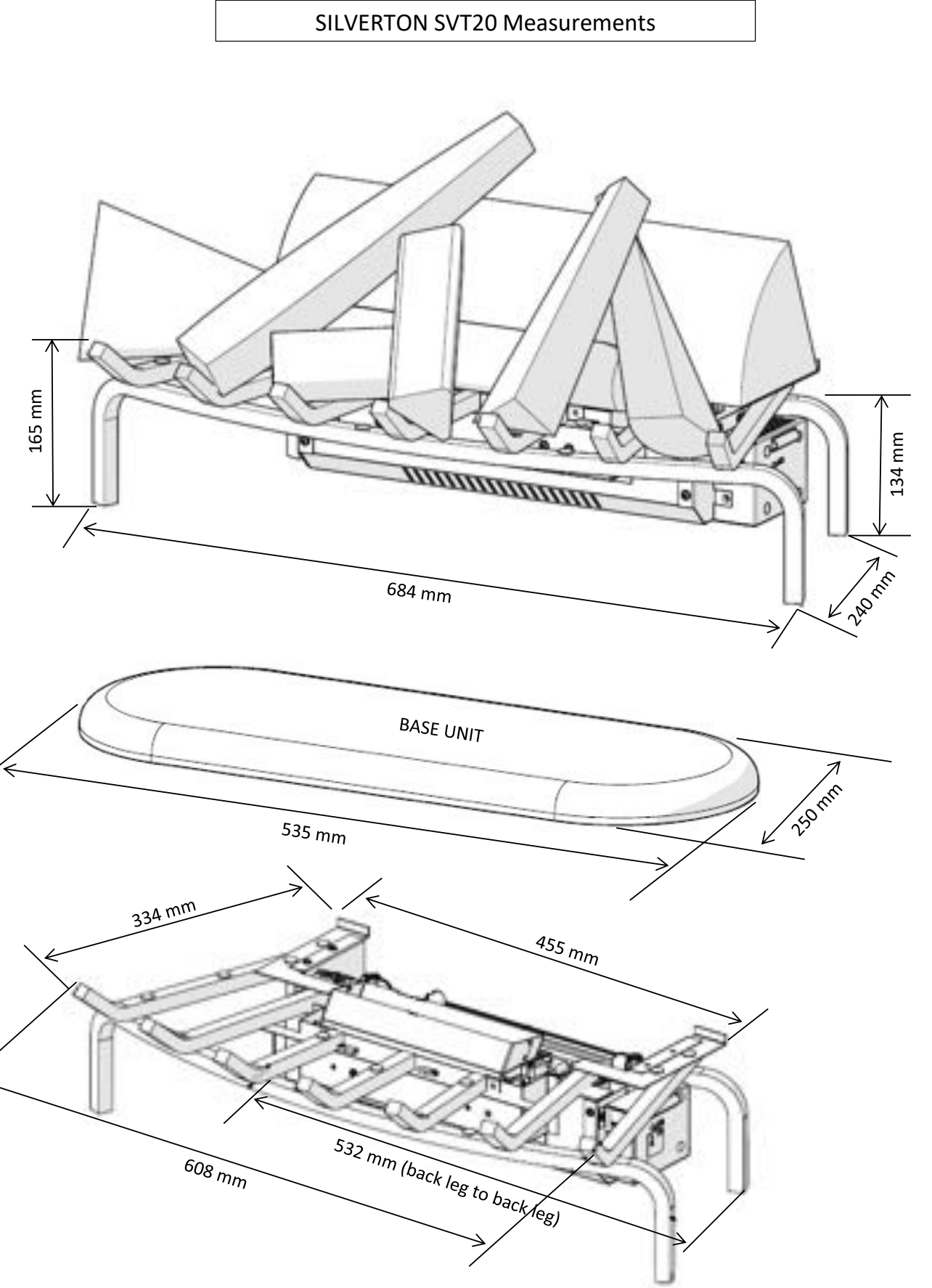
Product Description: SILVERTON - 2kW inset Opti-myst electric fire

Product Category:	Electric Fires
Product Type:	Basket
Brand:	Dimplex
Model Reference:	SVT20
Model/Range Name:	SILVERTON
Barcode:	5011139048455
Commodity Code:	85162991
Country of Origin:	Eire
Approvals:	CE, BEAB
Guarantee Period:	1 year

PRODUCT FEATURES			
Output (kW/Watts):	N/A	Lot 20 Compliant:	Y
Location of Controls:	Beneath lift-up canopy	Freestanding:	Y
On/Off Switch:	Y	Wall Mountable:	N
Opti-Myst® Effect:	Y	Inset:	N
Water Tank Size:	1.1 litres	Lamp Type:	LED
Flame Effect Only Option:	Y	Safety Cut Out:	Y
Fuel Bed Supplied:	Log effect	Power Cord Length:	1.5m with IEC
Spacer Kit Included:	N	Core Materials:	Steel and Plastic
Suite:	N	Finish / Colour	Black/Gray

UNPACKED DIMENSIONS in mm				WEIGHTS	
Height:	620	Total depth:	220	Packed weight (kg):	18 kg
Width:	520	Inset depth:	65	Unpacked weight (kg):	15.5 kg
PACKED DIMENSIONS				PACK & ACCESSORY COMPOSITION WEIGHTS	
Height (mm):	710	Cardboard:	2000g		
Width (mm):	635	EPS / Plastic:	600g / 100g		
Depth (mm):	330	Remote / Batteries:	50g / 23g		
Ti-Hi at 2.4m:	Ti = 4, Hi = 2	Wall Brackets:	N/A		
Pallet quantity at 1m:	4	Strapping / Staples:	14g		
Pallet quantity at 2.4m:	8	Instruction Booklet:	110g		

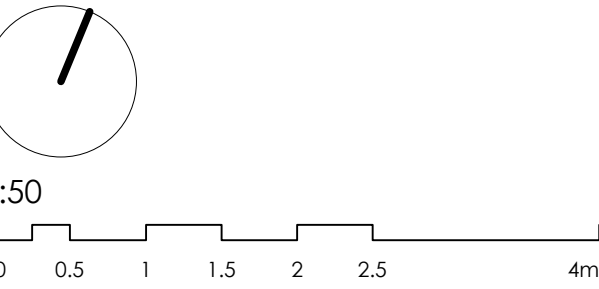
GDC Group Ltd, Millbrook House, Grange Drive, Hedge End, Southampton, SO30 2DF Issue 01
GDC Group Ltd's policy is one of continuous improvement; the Company therefore reserves the right to alter specifications without notice.



Copyright: All rights reserved. This drawing must not be reproduced without permission.
Only the original drawing should be relied upon. Contractors, subcontractors and suppliers must verify all dimensions on site before commencing any work or making any shop drawings.
All shop drawings to be submitted to the architect for comment prior to fabrication.
This drawing is to be read in conjunction with the Architect's specification, bills of quantities / schedules, structural, mechanical & electrical drawings and all discrepancies are to be reported to the architect.
Do not scale from this drawing. Dimensions are in millimetres unless otherwise stated.

revision / date / amendments
- / 17/02/22 / ISSUED FOR PLANNING (CONDITION no.4b)

17.02.22



PLANNING

Archer Humphryes Architects

Basement
Central House
142 Central Street
London, United Kingdom
EC1V 8AR
T: +44 (0) 20 7251 8555

project title	KOKO + Hope & Anchor + Bayham Place, Camden, London		
drawing title	1F Rm. 1-14	scale	1:50
drawing number	AHA/ KKR / PL /410	date	28.01.22
		drawn	CLVR
		checked	DA
		revision	-