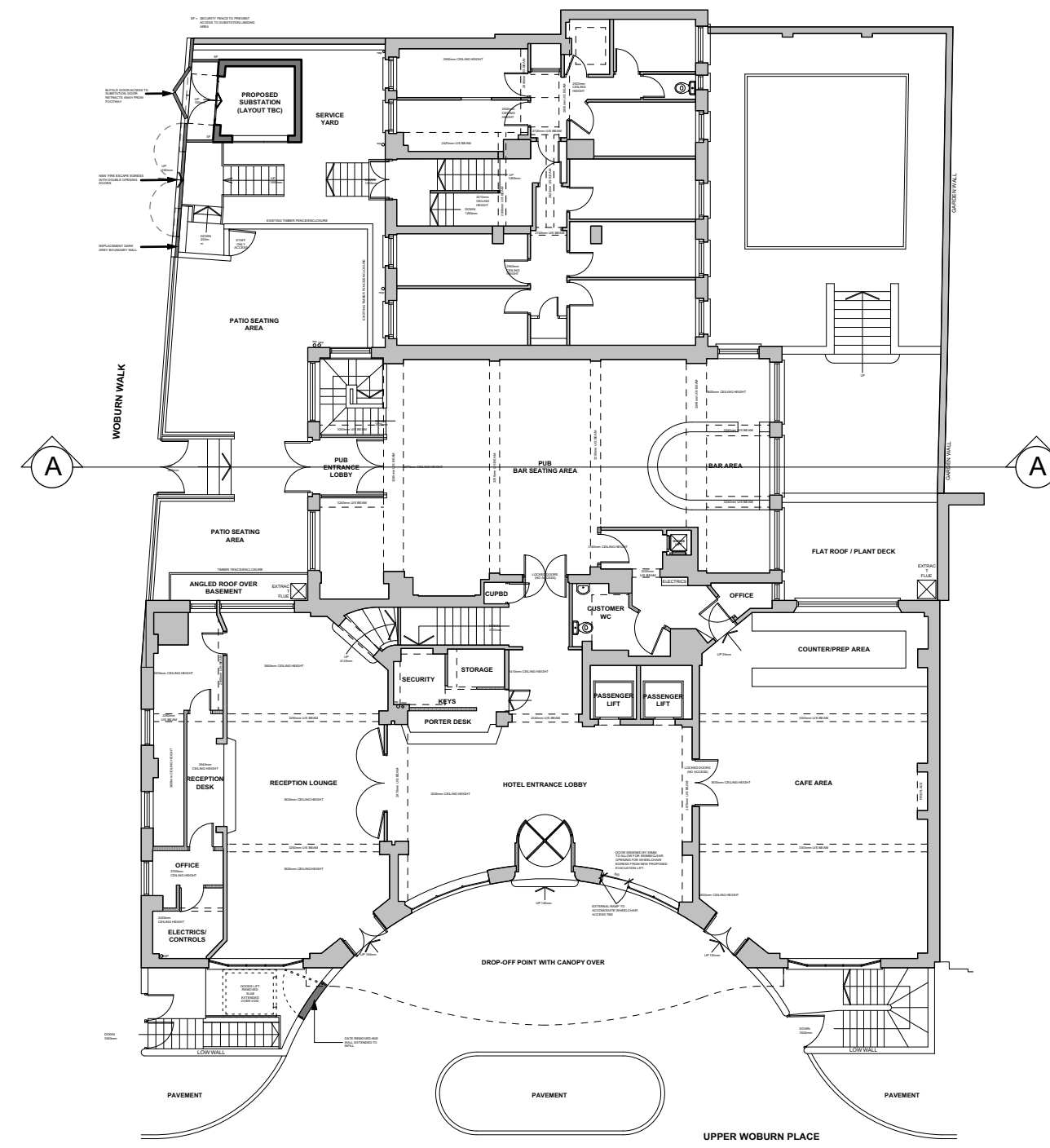
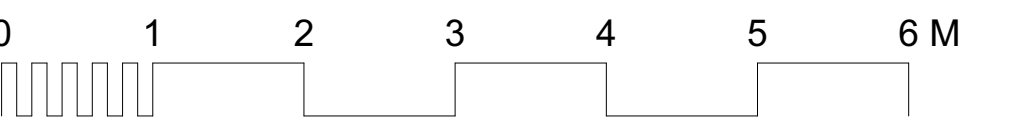


This drawing is the copyright of Axiom Architects. It is for planning application purposes only and may not be reproduced in whole or in part without permission. Drawings lodged for planning approval may be reproduced by the Planning Authority in accordance with the Copyright (Material Open to Public Inspection) (Marking of Copies of Plans and Drawings) Order 1990 and must carry the relevant copyright restriction note. Scaling from this drawing should only be carried out from a print at the scale and size specified within the title block. Responsibility for ensuring correct size reproduction remains with the reader.



KEY TO SECTION/ELEVATION



PROPOSED MATERIALS KEY:

- ① BRICK
- ② RC SLAB
- ③ RC ROOF WITH ASPHALT CLADDING
- ④ DARK GREY WALL/LOUVRED DOOR
- ⑤ DARK GREY LOUVRED VENT

Rev	Date	Description	By	Chk
-----	------	-------------	----	-----

AXIOM ARCHITECTS

1 Brooklands Yard Southover High Street Lewes East Sussex BN7 1HU
Tel. 01273 479434 www.axiomarchitects.co.uk

Client
Splendid Hospitality Group

Project
County Hotel
8-11 Upper Woburn Place
London, WC1H 0JW

Drawing
Proposed GA Section A-A

Scale	Status	Date	Drawn	Checked
1:50	PLANNING	28/01/22	JD	AB
Drawing No.				Revision

5235-PL-114