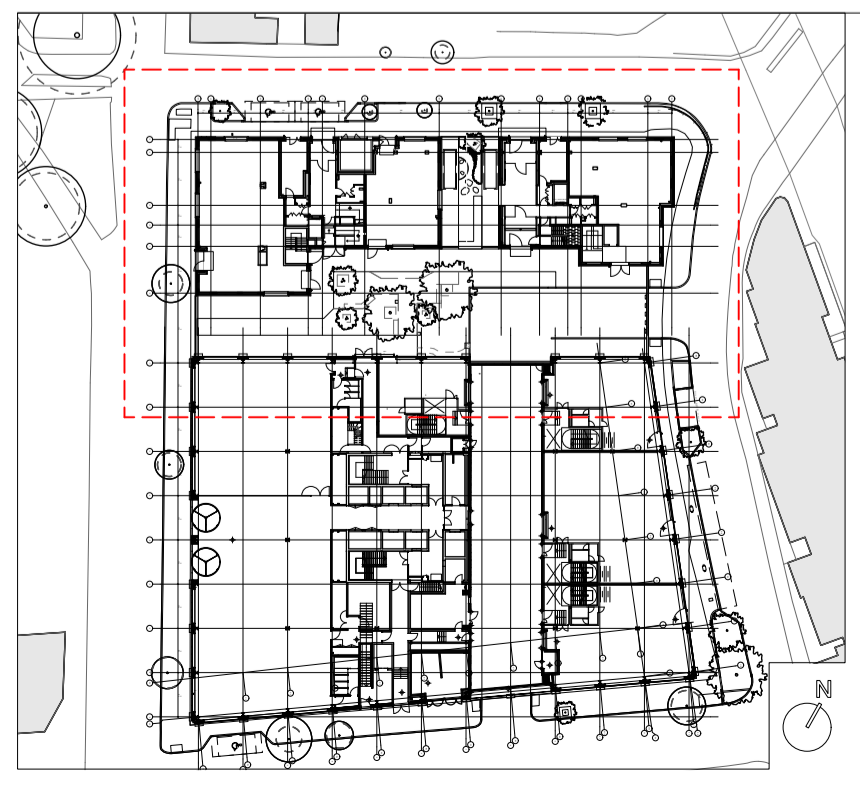
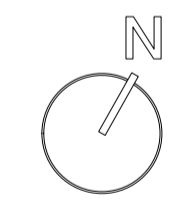


Materials key plan - GL (1:125)

Extent of soil crate system

Large trees - remove 1500x1500mm section of crates to accommodate tree rootball; refer to SP108\_73\_SC - Estimated rootball size 1200mm diameter; size to be confirmed with nursery before ordering

Small trees - remove 1000x1000mm section of crates to accommodate tree rootball; refer to SP108\_73\_SC - Estimated rootball size 900mm diameter; size to be confirmed with nursery before ordering



- Key:**
- Proposed trees; Refer to current revision of SP108\_01\_GP
  - Soil crate system extent, providing uncompacted rooting volume for new trees and supporting surface above
  - Soil crate system layout; refer to SP108\_73\_SC - Soil crate system eg. RootSpace 2 modules deep, with aeration deck. Crate system 500x500mm in plan
  - RootSpace 400 + 600 combination
  - RootSpace 600 + 600 combination, where surface levels allow
  - Tree pit drainage points (TD1-4): 100mm diameter pipe (to engineer's details) - Central area: located at edge of soil crates to avoid penetrations within soil crate system, refer to detail SP108\_73\_SC - Soft landscape, between residential buildings (TD5,6): Located within soft landscape area to provide overflow drainage points
  - 2no. external watering points - SPTB miniature standpipe for soft landscape by Arrow Valves; refer to detail SP108\_82\_LE and engineer's information
  - Proposed lighting columns & bollards; refer to external lighting proposals by others; refer to detail SP108\_80\_LF for foundation requirements

Rev	Date	Description
T1	30.10.20	Issued for Tender
T2	18.02.22	Updated plan layout

**Notes:**

- Refer to separate Tree Survey by Tim Moya Associates (March 2019) - RPA information taken from Tree Survey.
- Refer to Tree Protection Plan and Arboricultural Impact Assessment by Tim Moya Associate (Jan-20).
- Refer to architect's information for proposed surface levels and falls on top of the ground floor slabs.

**JCLA**  
Jonathan Cook Landscape Architects Ltd  
3A Iliffe Yard  
LONDON SE17 3QA  
Tel +44 (0)207 703 3270  
www.jcla.co.uk

© JCLA

Do not scale from this drawing. Any discrepancies or queries should be brought to the attention of the authors. Dimensions are to be verified on site prior to construction.

To be read in conjunction with all relevant Architects', Services and Structural Engineers' drawings.

All existing site, tree and building information has been compiled from different sources.  
Refer to current revisions of all referenced files.

Client W.RE	
Project SP108: St Pancras Commercial centre	
Drawing Title Proposed area plan 3: Soil crate system layout	
Drawing Number SP108-13-03	
Date 18.02.22	Revision T2
Scale (8 A1) 1:50	Drawing Status Stage 4