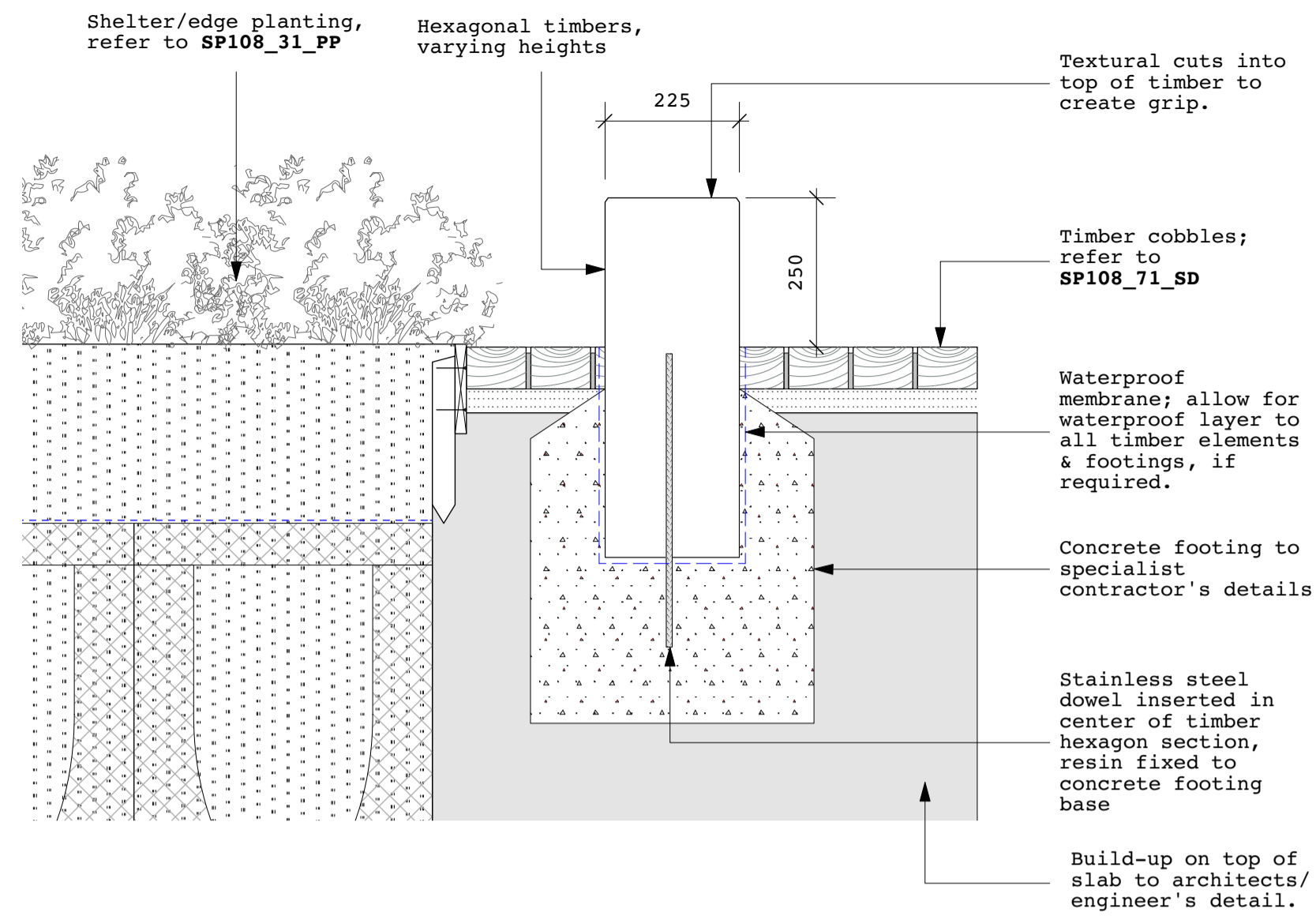
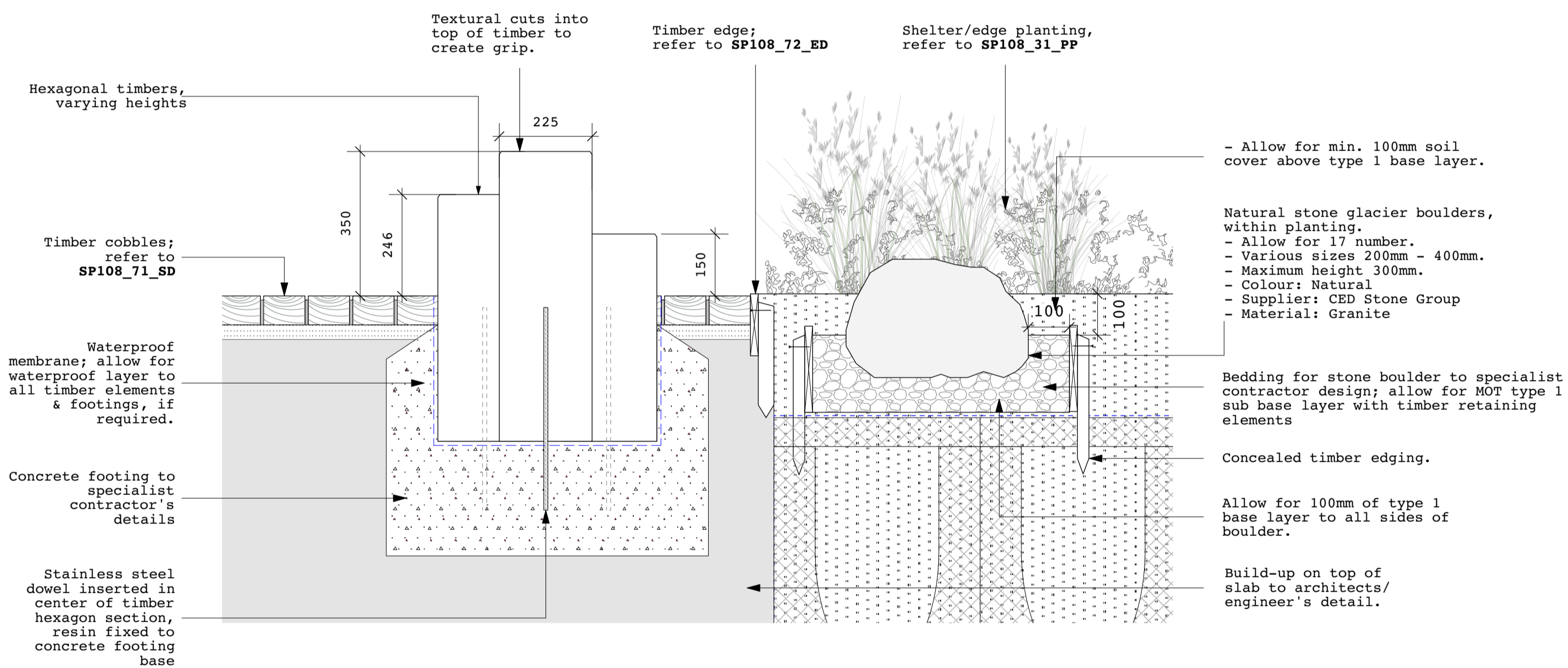


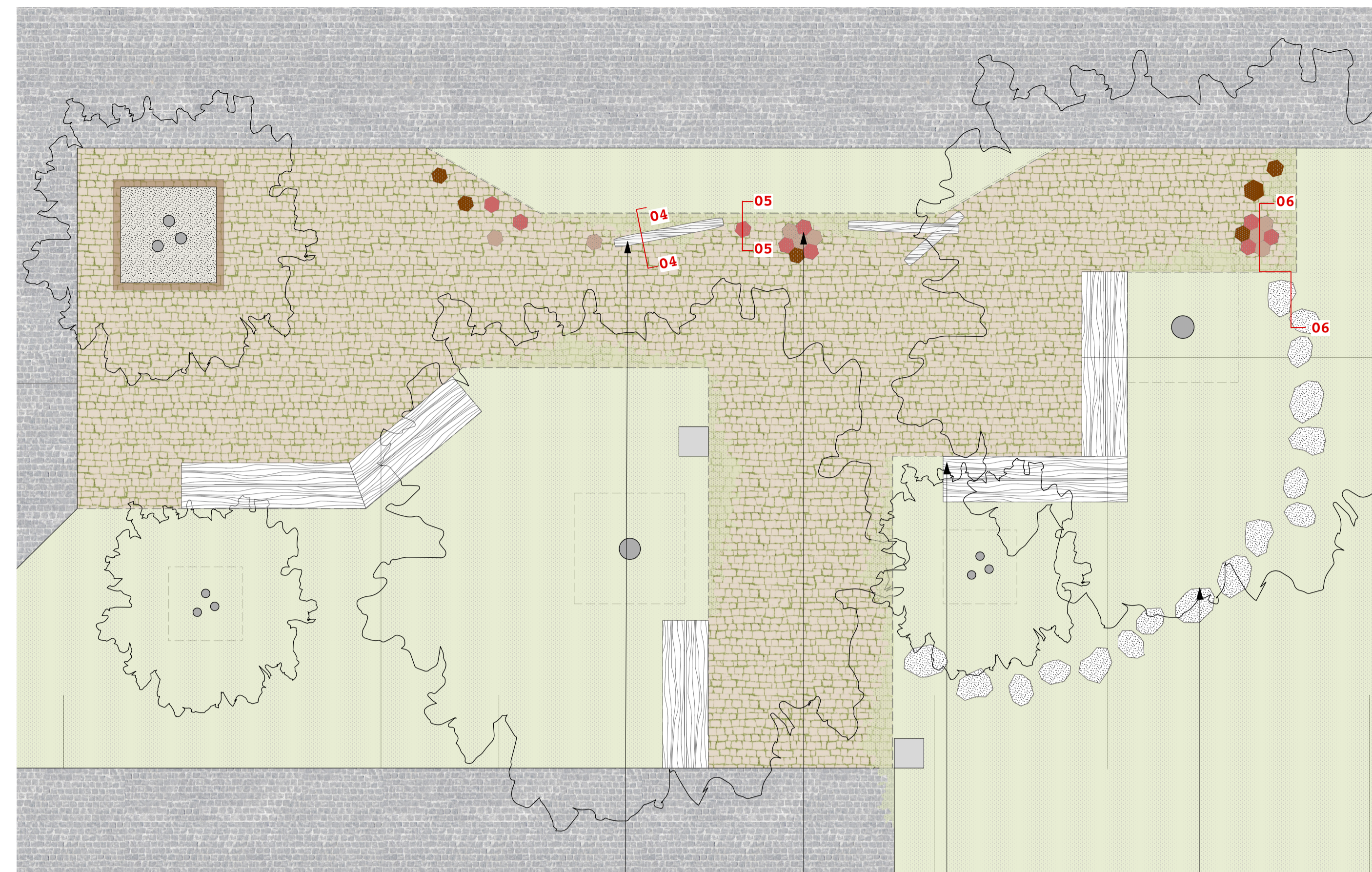
Section 04 - Natural Timber logs
1:10



Section 05 - Hexagonal timber individual
1:10



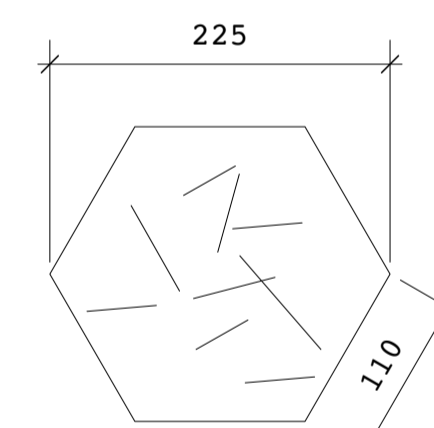
Section 06 - Hexagonal timbers grouped



Key Plan 1:50

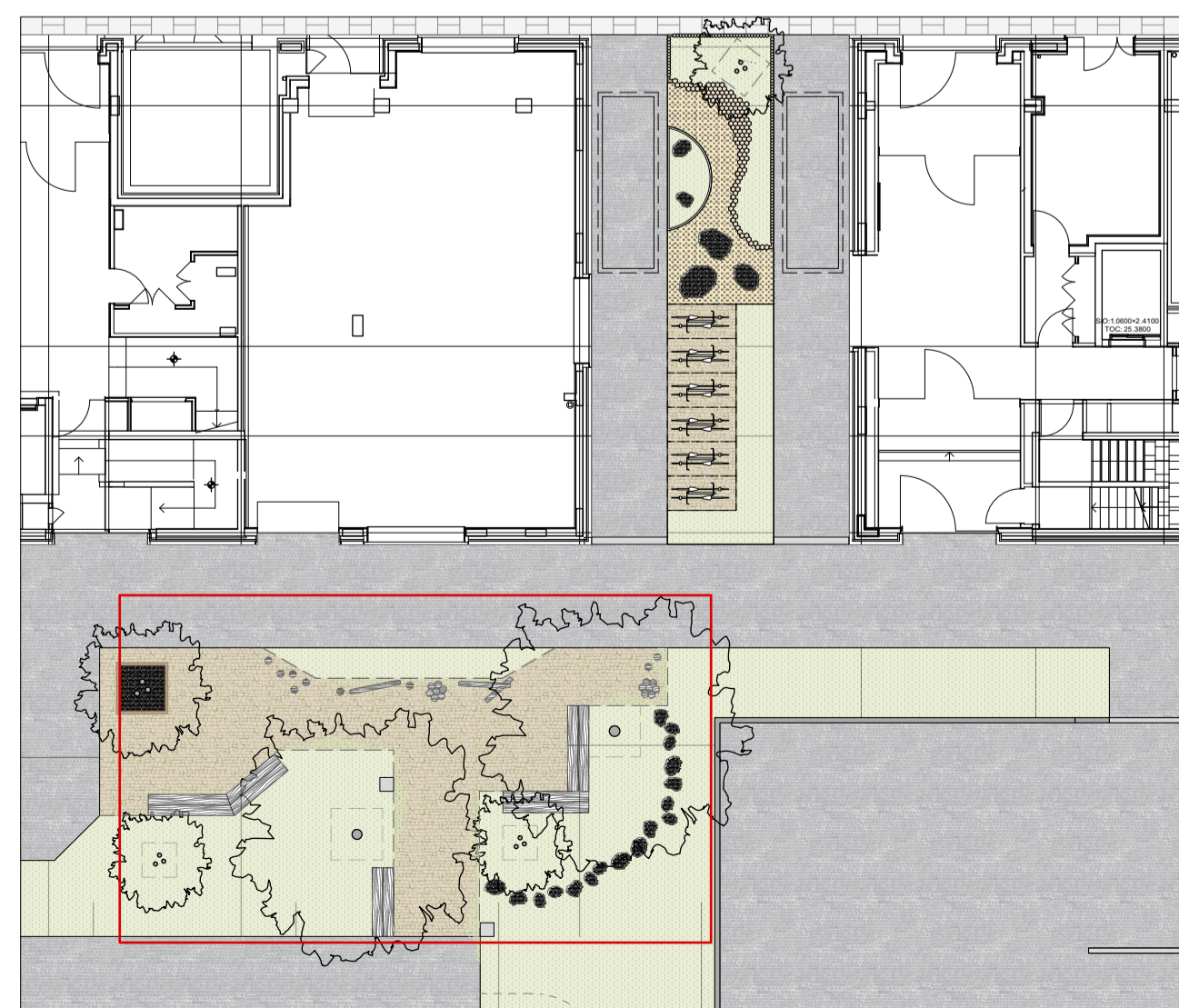
Timber height key:

- 350mm high
- 250mm high
- 150mm high



Hexagonal timbers (allow for 23no.)

Treated hexagonal timber, varies in height eg. 100mm, 150mm, 250mm and 400mm, allow for mix as shown on key plan.
 - Reclaimed/recycled timber sourced from Ashwells Timber Merchants www.ashwelltimber.com
 Tel: 01375 892 576
 - Oak/larch/Robinia TBC on receipt of samples, refer to specification.
 - Planed & sanded all round to remove all sharp edges/splinters.
 - Refer also to specification Q52/322.



Key Plan
1:200 @ A1

Notes:

- Timbers:**
- Timber to be air dried to 16-18% moisture content, grade QPI.
 - Finish: Planed and sanded all round to remove all sharp edges/splinters.
 - Colour: Natural finish.
 - All timber to be FSC, unless reclaimed, refer to to specification.
- Boulders:**
- Supplier: CED Stone Group
Stone glacier boulders
 - Material: Granite
 - Colour: Natural
 - Allow for selection process of boulders, to be approved by Landscape Architect.

- Refer to landscape overview plans SP108_01_GP
SP108_02_GM
- Refer to Architect's drawings for all building information and for surface levels/falls on top of the ground floor slab
- Refer to section Q52 of Landscape specification document SP108_Doc04_LS for play elements and notes regarding inspections/formal sign-off from RPII / RoSPA

Rev	Date	Description
T1	30.10.20	Issued for Tender
T2	18.02.22	Updated plan layout

JCLA

Jonathan Cook Landscape Architects Ltd
 3A Iliffe Yard
 LONDON SE17 3QA
 Tel +44 (0)207 703 3270
 www.jcla.co.uk

© JCLA

Do not scale from this drawing. Any discrepancies or queries should be brought to the attention of the authors. Dimensions are to be verified on site prior to construction.

To be read in conjunction with all relevant Architects', Services and Structural Engineers' drawings.

All existing site, tree and building information has been compiled from different sources.
 Refer to current revisions of all referenced files.

Client W.RE	
Project SP108: St Pancras Commercial centre	
Drawing Title Play elements - Central landscape	
Drawing Number SP108-78-PE	
Date 18.02.22	Revision T2
Scale (@ A1) 1:10 and 1:25	Drawing Status Stage 4