

LANDSCAPE ELEMENTS: refer to hard landscape plan SP108\_04\_HL & to relevant engineer's information  
**LIGHTING FOUNDATION REQUIREMENTS WHERE PLACED WITHIN SOIL CRATE SYSTEM**

- All foundation details to Engineer's specification, instances shown on this drawing are only where lighting elements require co-ordination with soil crate system

For surfaces key and areas, refer to hard landscape plan: SP108\_04\_HL



© JCLA

Do not scale from this drawing. Any discrepancies or queries should be brought to the attention of the authors. Dimensions are to be verified on site prior to construction.

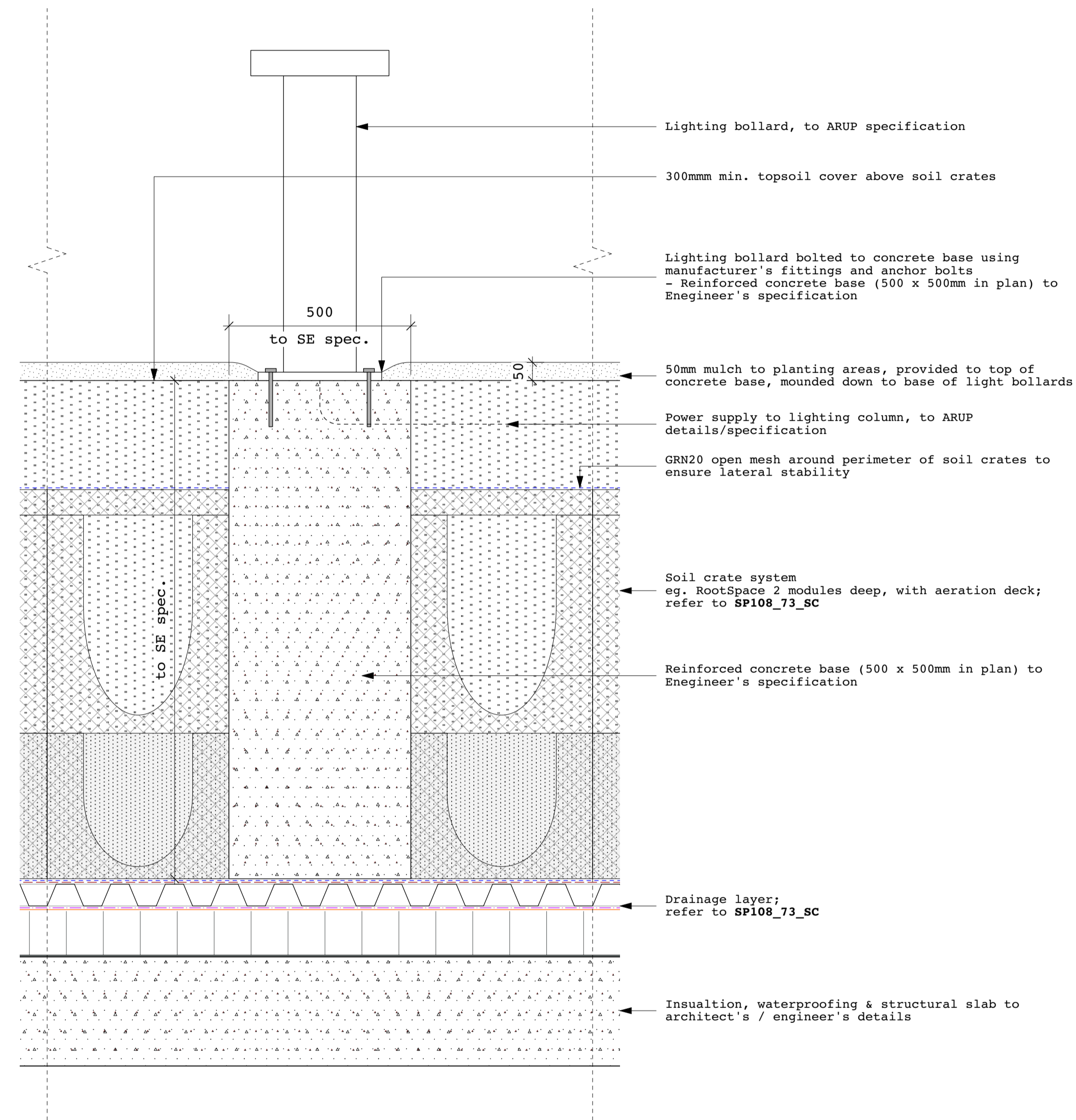
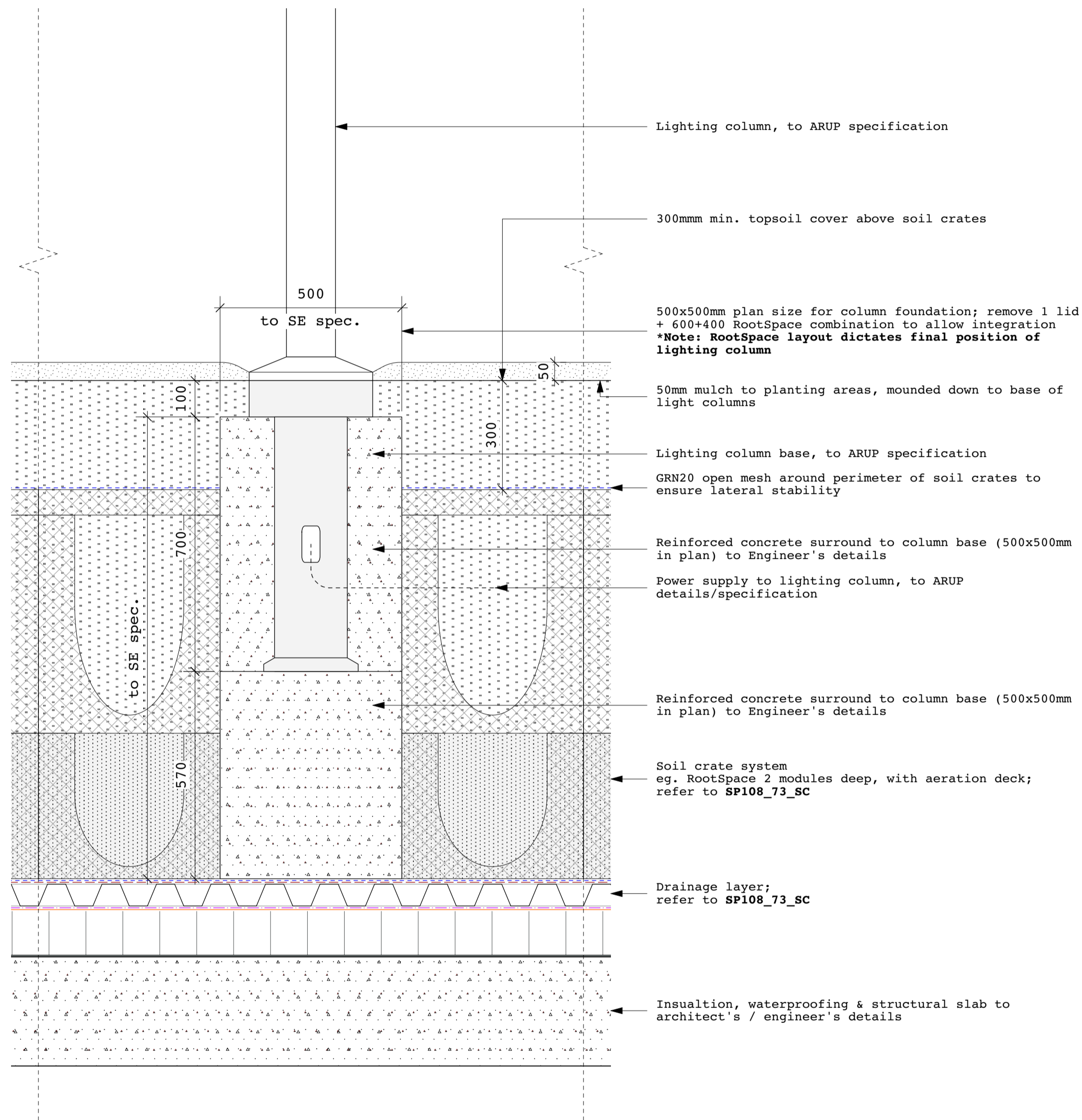
All existing site, tree and building information has been compiled from different sources.

Refer to current revisions of all referenced files.

Notes:

Key:

Rev	Date	Description
30.10.20	T1	Issued for Tender



**JCLA**  
 Jonathan Cook Landscape Architects Ltd  
 3A Iliffe Yard  
 LONDON SE17 3QA  
 Tel +44 (0)207 703 3270  
 www.jcla.co.uk

Client  
 W.RE

Project  
 SP108: St Pancras Commercial centre

Drawing Title  
 Landscape elements:  
 Lighting foundation requirements

Drawing Number  
 SP108-80-LF

Date 30.10.20	Revision T1
Scale (8 A1) 1:10	Drawing Status Stage 4