

Plan 01  
Scale 1:10

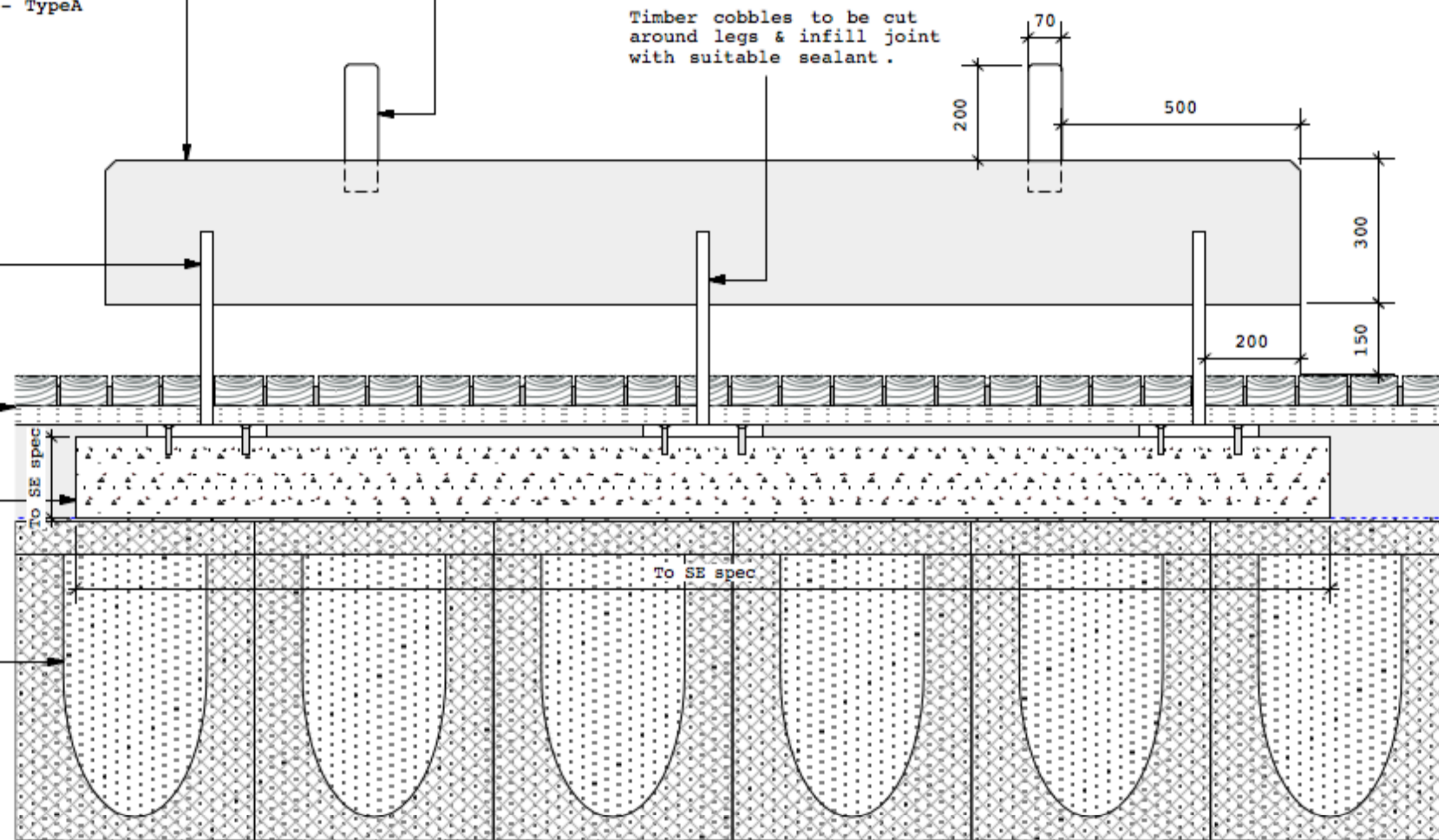
Oak 300mm x 300mm (length varies) solid timber section.  
- Timber to be planed & sanded all round to remove all sharp edges. Profile edges to be rounded.  
- Timber to be air dried to 16-18% moisture content, grade QPI. Refer to specification Q50/220 - TypeA

- Armrest; 10mm x 70mm flat bent steel  
- Colour to complement architectural metalwork - refer to Architect's information, colour ref NCS S 7005-Y80R  
- Surface mounted to timber section with countersunk screws.

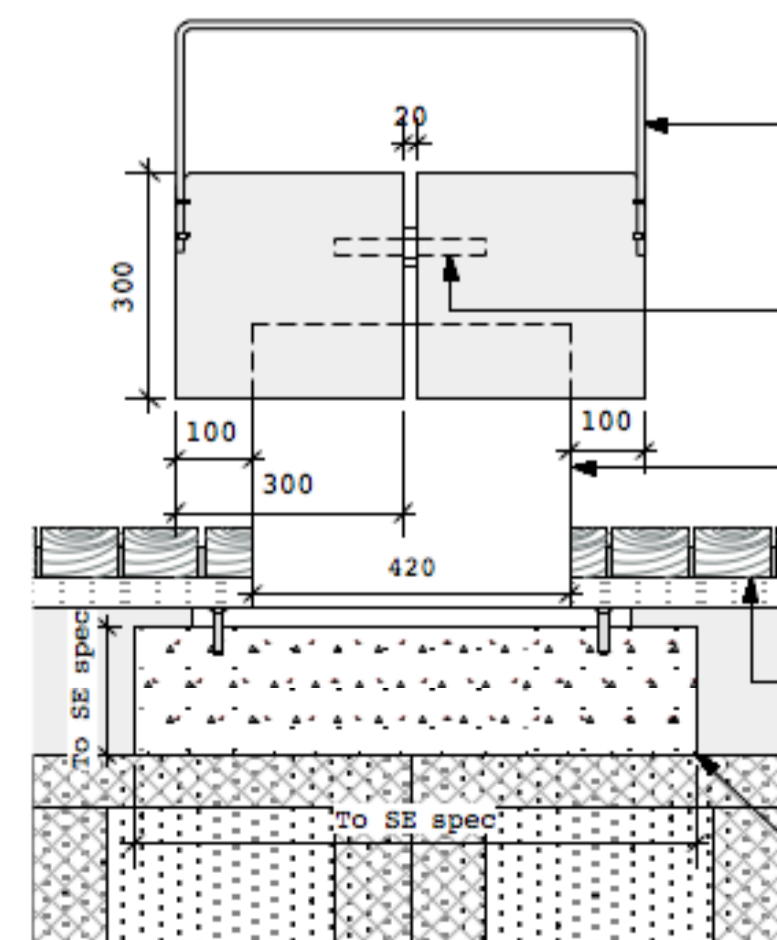
- 25mm mild steel feet inserted into timber sections.  
- Colour to complement architectural metalwork - refer to Architect's information, colour ref NCS S 7005-Y80R  
- Bolted to concrete footing using suitable anchor bolts.

Timber cobbles; refer to SP108\_71\_SD

150mm reinforced concrete base to Engineer's details



Section AA  
Scale 1:10



Section BB  
Scale 1:10

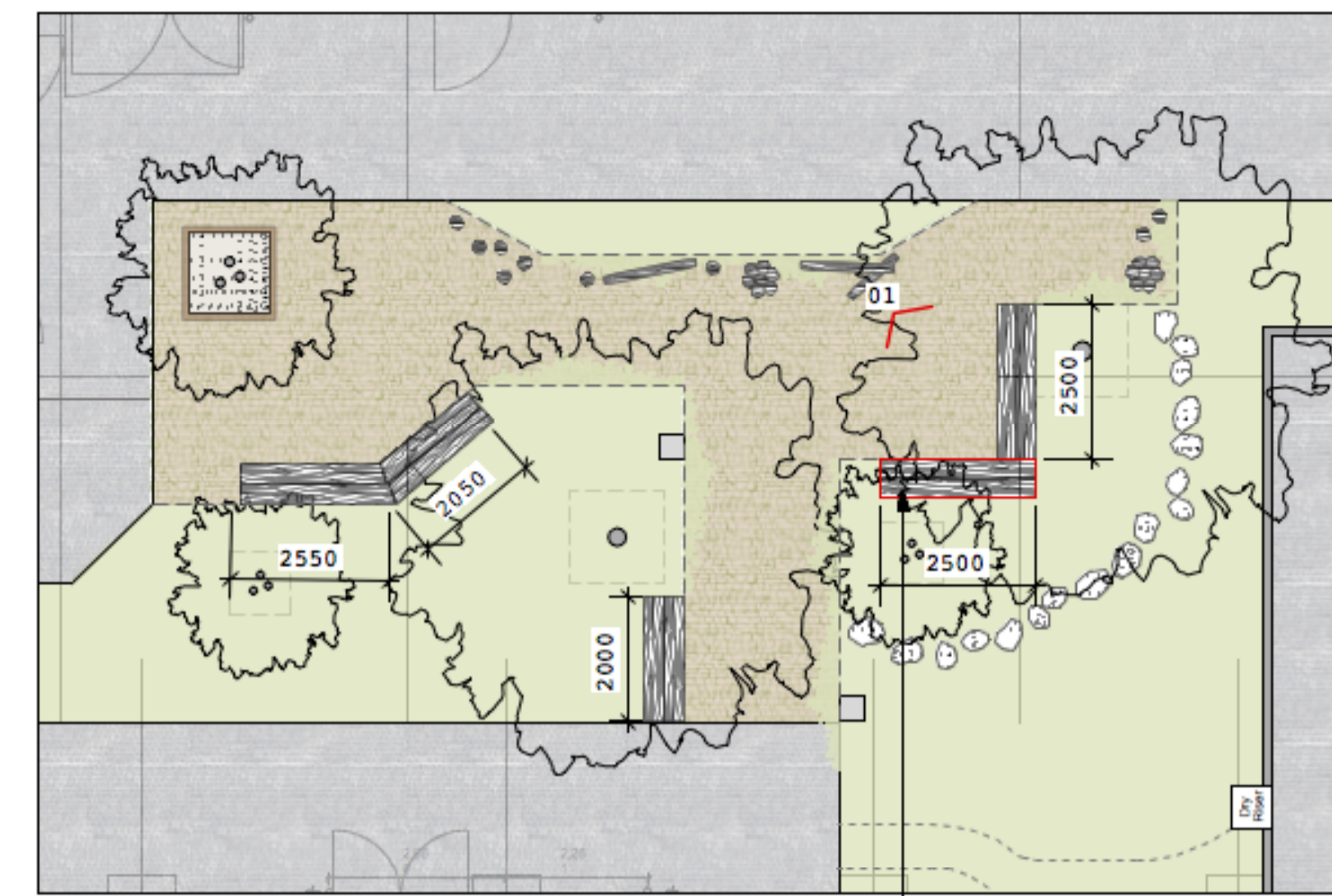
Armrest 10mm x 70mm bent steel  
- Colour to complement architectural metalwork - refer to Architect's information, colour ref NCS S 7005-Y80R  
Routed out and fixed to timber section with countersunk screws.

Stainless steel dowel, 20mm spacer

25mm steel feet inserted to timber sections.  
- Colour to complement architectural metalwork - refer to Architect's information, colour ref NCS S 7005-Y80R  
Root fixed to concrete footing.

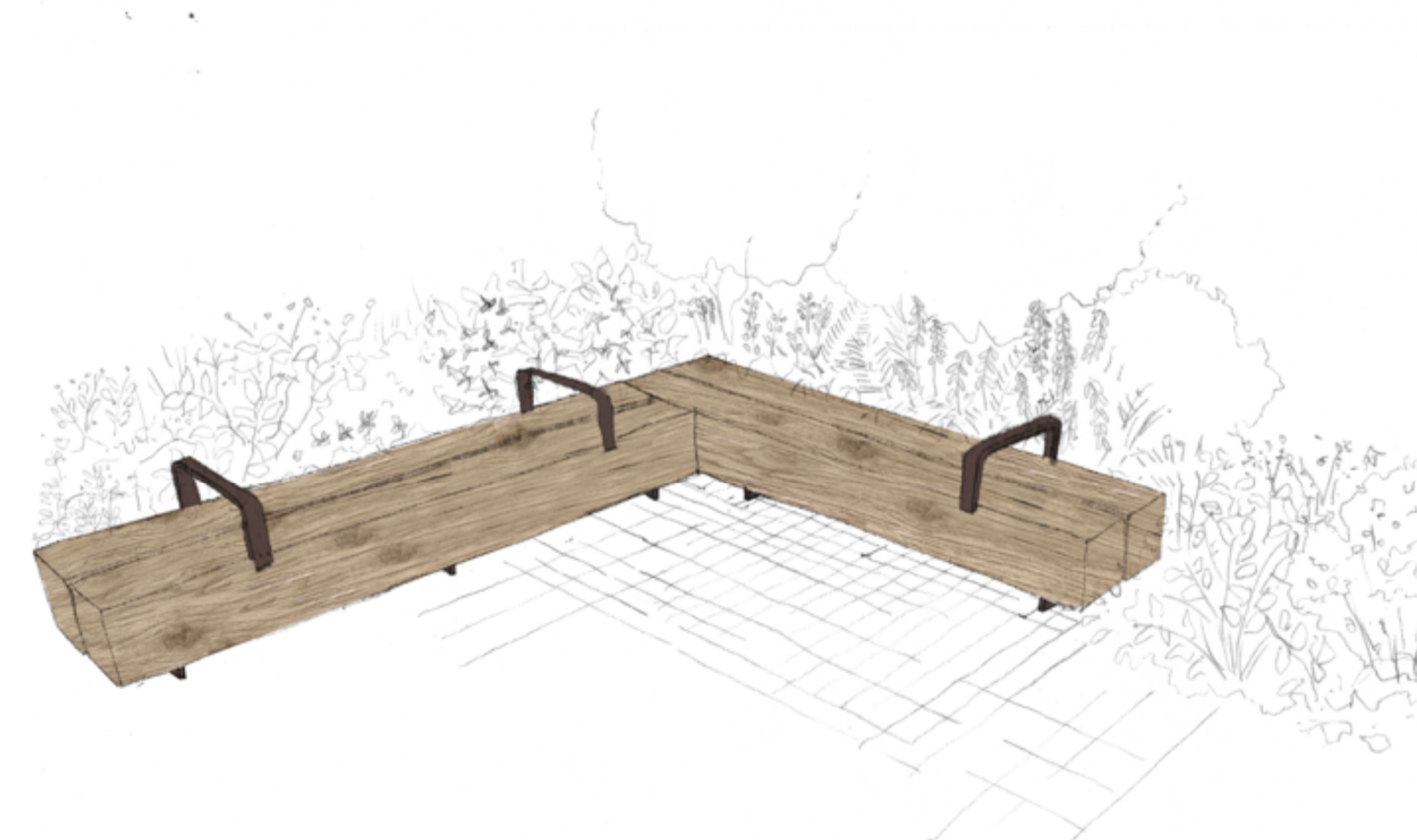
Timber cobbles refer to SP108\_71\_SD

150mm reinforced concrete base to Engineer's details

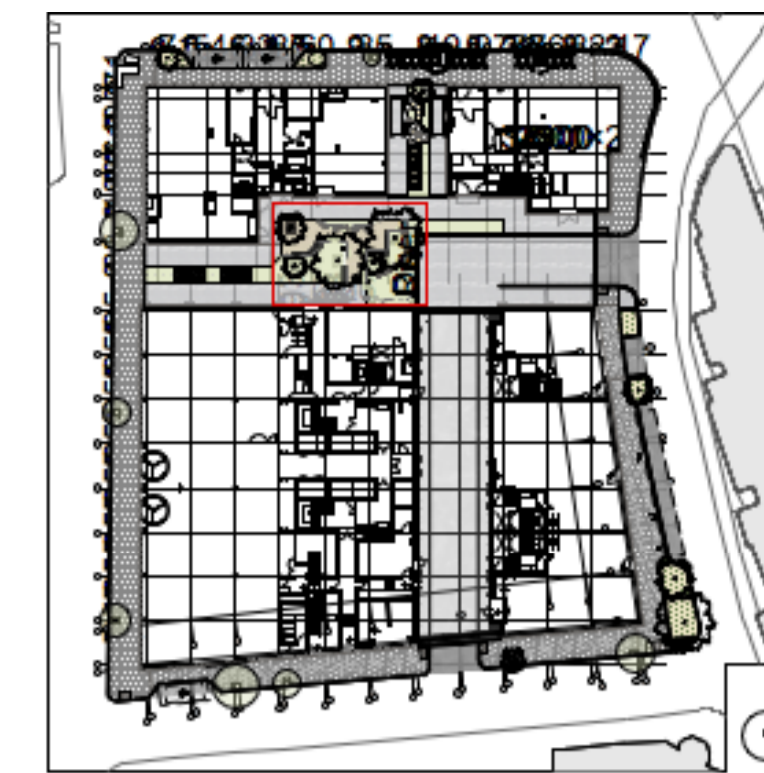


Key Plan  
Scale: 1:100

Detail shown opposite



Sketch View 01



© JCLA  
Do not scale from this drawing. Any discrepancies or queries should be brought to the attention of the authors. Dimensions are to be verified on site prior to construction.  
All existing site, tree and building information has been compiled from different sources.  
Refer to current revisions of all referenced files.

Notes:  
- This drawing shows design intent only and is to be developed by a specialist fabricator, shop drawings to be provided for approval.

- Supplier: Bramhall (www.bramhall1840.co.uk) or equal approved.

- Bench design has taken into account guidance on street furniture design from TFL and Camden design guides, also taking into consideration the DDA act.

- 3no bespoke benches, to dimensions shown in key plan & details.

- Timber to be air dried to 16-18% moisture content, grade QPI.

- All timber to be FSC unless reclaimed.

- Finish: Planed & sanded all round to remove all sharp edges/splinters.

- Colour: Natural finish.

- Refer to Q50/220 - Type A in Landscape Specification SP108\_Doc04\_LS

Rev	Date	Description
T1	30.10.20	Issued for Tender
T2	18.02.22	Updated plan layout

<b>JCLA</b> Jonathan Cook Landscape Architects Ltd 3A Iliffe Yard LONDON SE17 5QA Tel +44 (0)207 703 3270 www.jcla.co.uk	
Client W.RE	
Project SP108: St Pancras Commercial centre	
Drawing Title Bench details - Ground level	
Drawing Number SP108-81-GB	
Date 18.02.22	Revision T2
Scale (8 A1) 1:10 and 1:100	Drawing Status Stage 4