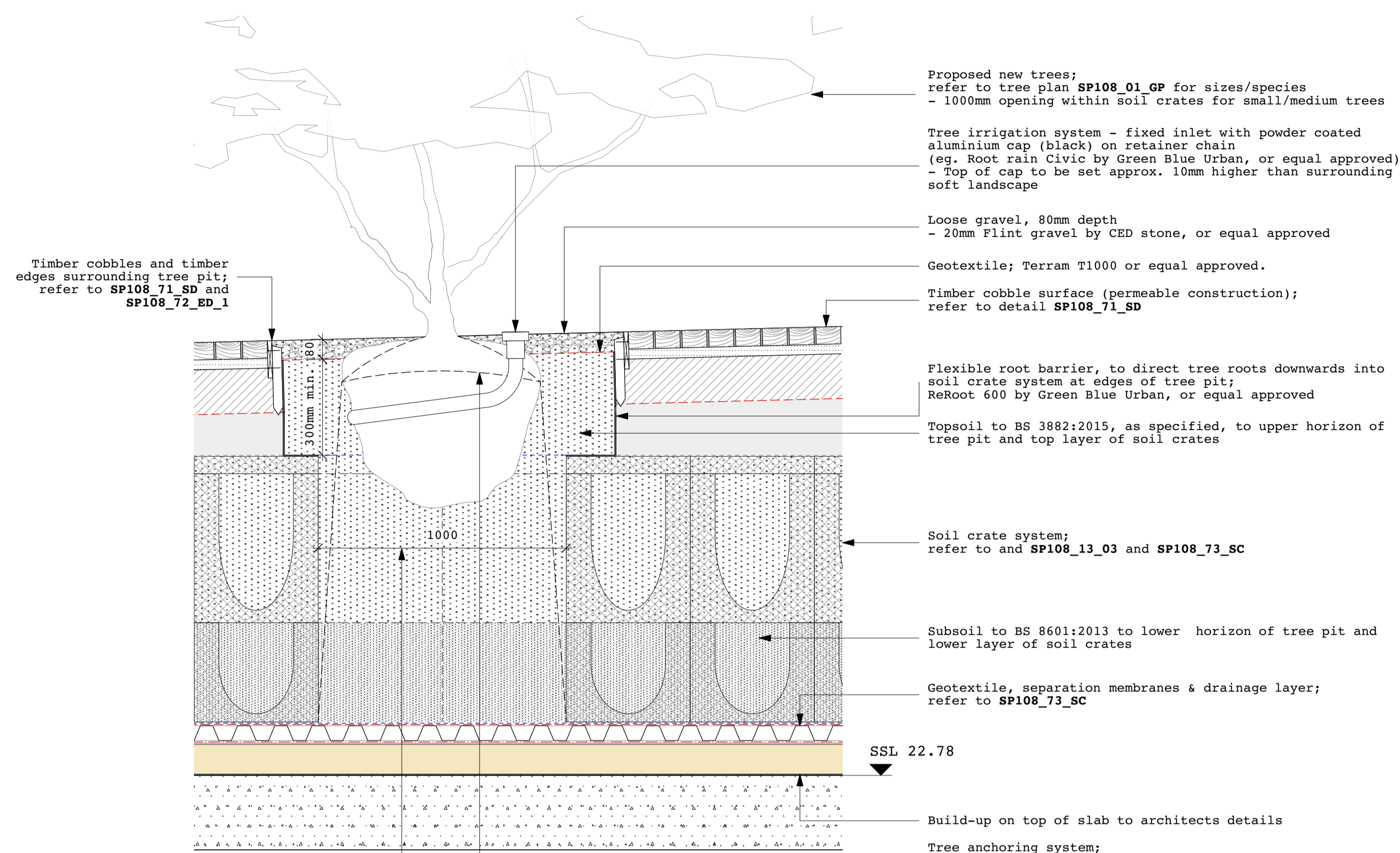


KEY PLAN
1:100

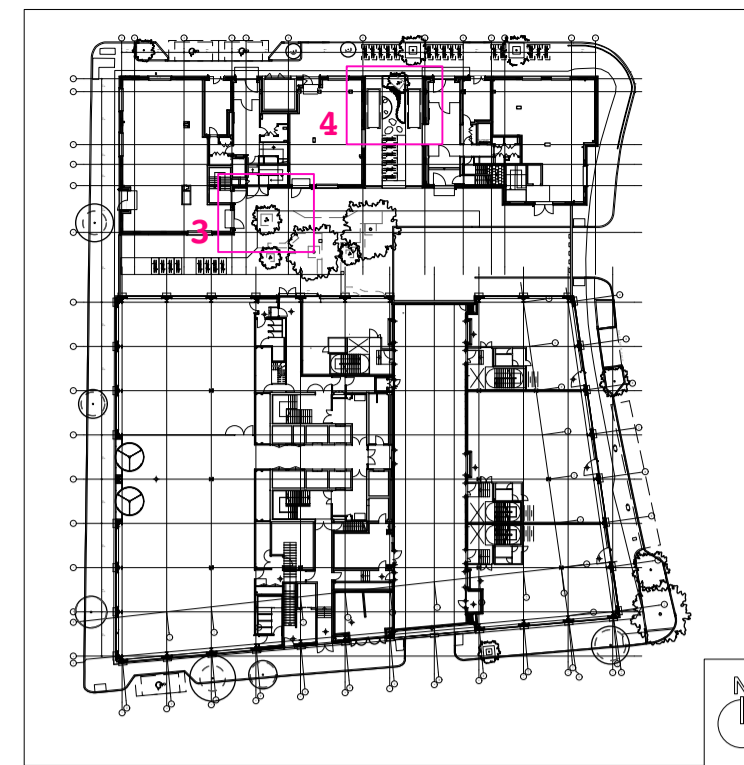
Extent of soil
crate system

DETAIL 03 - Medium tree in hard surface
[SECTION C]
1:15 @ A1



Small/medium trees - leave out 1000x1000mm section of crates to accommodate tree rootball; refer also to SP108_13_03
- Estimated rootball size 900mm diameter; size to be confirmed with nursery before ordering

- Proposed new trees; refer to tree plan SP108_01_GP for sizes/species
- 1000mm opening within soil crates for small/medium trees
- Tree irrigation system - fixed inlet with powder coated aluminium cap (black) on retainer chain (eg. Root rain Civic by Green Blue Urban, or equal approved)
- Top of cap to be set approx. 10mm higher than surrounding soft landscape
- Loose gravel, 80mm depth
- 20mm Flint gravel by CED stone, or equal approved
- Geotextile; Terram T1000 or equal approved.
- Timber cobble surface (permeable construction); refer to detail SP108_71_SD
- Flexible root barrier, to direct tree roots downwards into soil crate system at edges of tree pit; ReRoot 600 by Green Blue Urban, or equal approved
- Topsoil to BS 3882:2015, as specified, to upper horizon of tree pit and top layer of soil crates
- Soil crate system; refer to and SP108_13_03 and SP108_73_SC
- Subsoil to BS 8601:2013 to lower horizon of tree pit and lower layer of soil crates
- Geotextile, separation membranes & drainage layer; refer to SP108_73_SC
- SSL 22.78
- Build-up on top of slab to architects details
- Tree anchoring system; Wire straps over Rootball with protective mesh mats (eg. Platimat and wire anchor system by Green Tech, or equal approved)
- Wire anchors sized according to proposed tree (Medium or Large)
- Fixing system to soil crates by soil crate manufacturer; Green Blue Urban, or equal approved



© JCLA

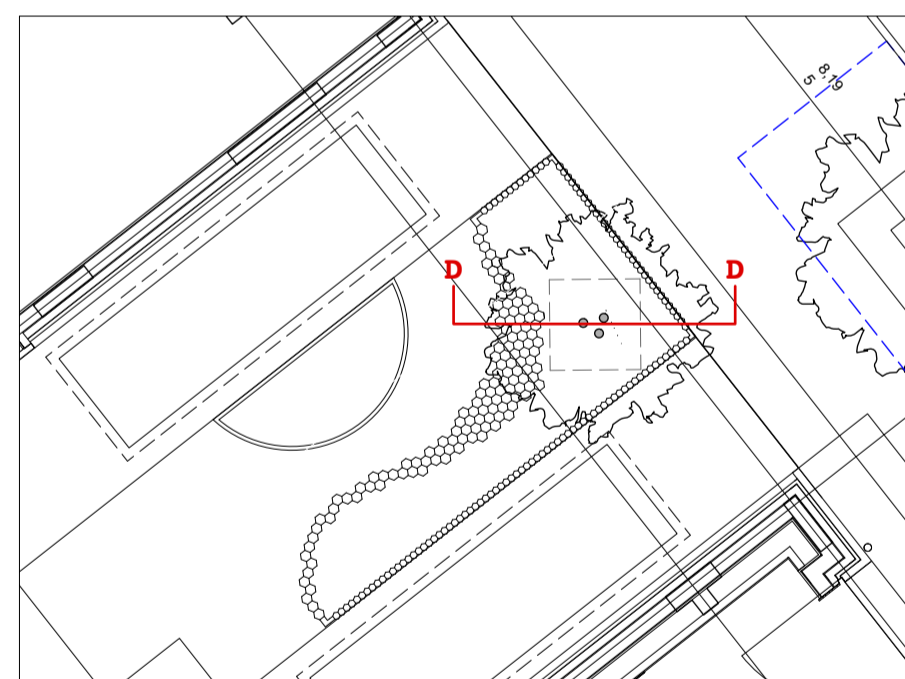
Do not scale from this drawing. Any discrepancies or queries should be brought to the attention of the authors. Dimensions are to be verified on site prior to construction.

All existing site, tree and building information has been compiled from different sources.

Refer to current revisions of all referenced files.

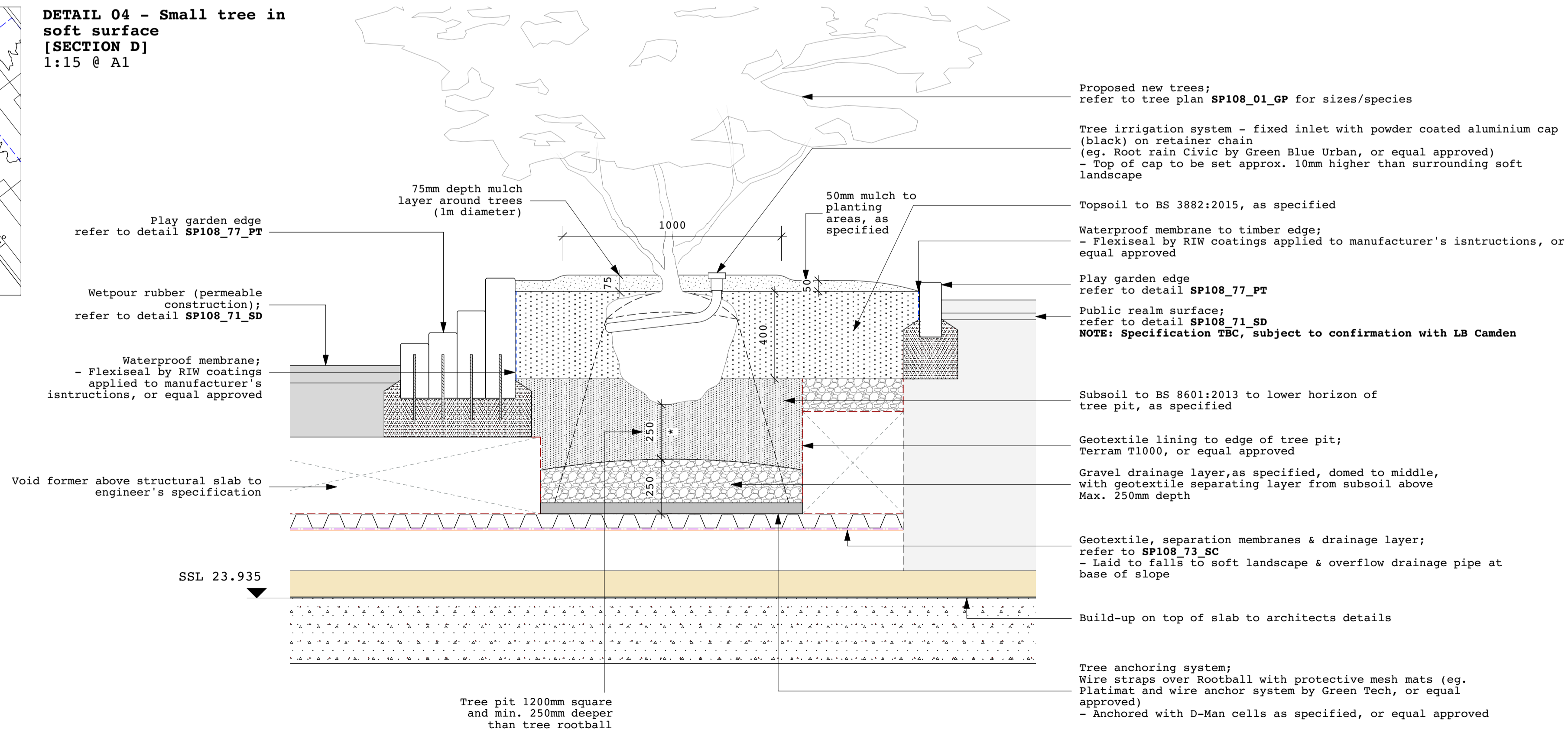
Notes:

Key:



KEY PLAN
1:100

DETAIL 04 - Small tree in soft surface
[SECTION D]
1:15 @ A1



Play garden edge refer to detail SP108_77_PT

Wetpour rubber (permeable construction); refer to detail SP108_71_SD

Waterproof membrane; - Flexiseal by RIW coatings applied to manufacturer's instructions, or equal approved

Void former above structural slab to engineer's specification

SSL 23.935

Tree pit 1200mm square and min. 250mm deeper than tree rootball

- Proposed new trees; refer to tree plan SP108_01_GP for sizes/species
- Tree irrigation system - fixed inlet with powder coated aluminium cap (black) on retainer chain (eg. Root rain Civic by Green Blue Urban, or equal approved)
- Top of cap to be set approx. 10mm higher than surrounding soft landscape
- Topsoil to BS 3882:2015, as specified
- Waterproof membrane to timber edge; - Flexiseal by RIW coatings applied to manufacturer's instructions, or equal approved
- Play garden edge refer to detail SP108_77_PT
- Public realm surface; refer to detail SP108_71_SD
NOTE: Specification TBC, subject to confirmation with LB Camden
- Subsoil to BS 8601:2013 to lower horizon of tree pit, as specified
- Geotextile lining to edge of tree pit; Terram T1000, or equal approved
- Gravel drainage layer, as specified, domed to middle, with geotextile separating layer from subsoil above Max. 250mm depth
- Geotextile, separation membranes & drainage layer; refer to SP108_73_SC
- Laid to falls to soft landscape & overflow drainage pipe at base of slope
- Build-up on top of slab to architects details
- Tree anchoring system; Wire straps over Rootball with protective mesh mats (eg. Platimat and wire anchor system by Green Tech, or equal approved)
- Anchored with D-Man cells as specified, or equal approved

Rev	Date	Description
S31	03.02.20	Stage 3 issue
T1	30.10.20	Issued for Tender
T2	18.02.22	Updated plan layout

JCLA

Jonathan Cook Landscape Architects Ltd
3A Iliffe Yard
LONDON SE17 3QA
Tel +44 (0)207 703 3270
www.jcla.co.uk

Client
W.RE

Project
SP108: St Pancras Commercial centre

Drawing Title
Tree pit details 02:
Hard and soft surface

Drawing Number
SP108-74-TP-2

Date
18.02.22

Revision
T2

Scale (8 A1)
1:15

Drawing Status
Stage 4