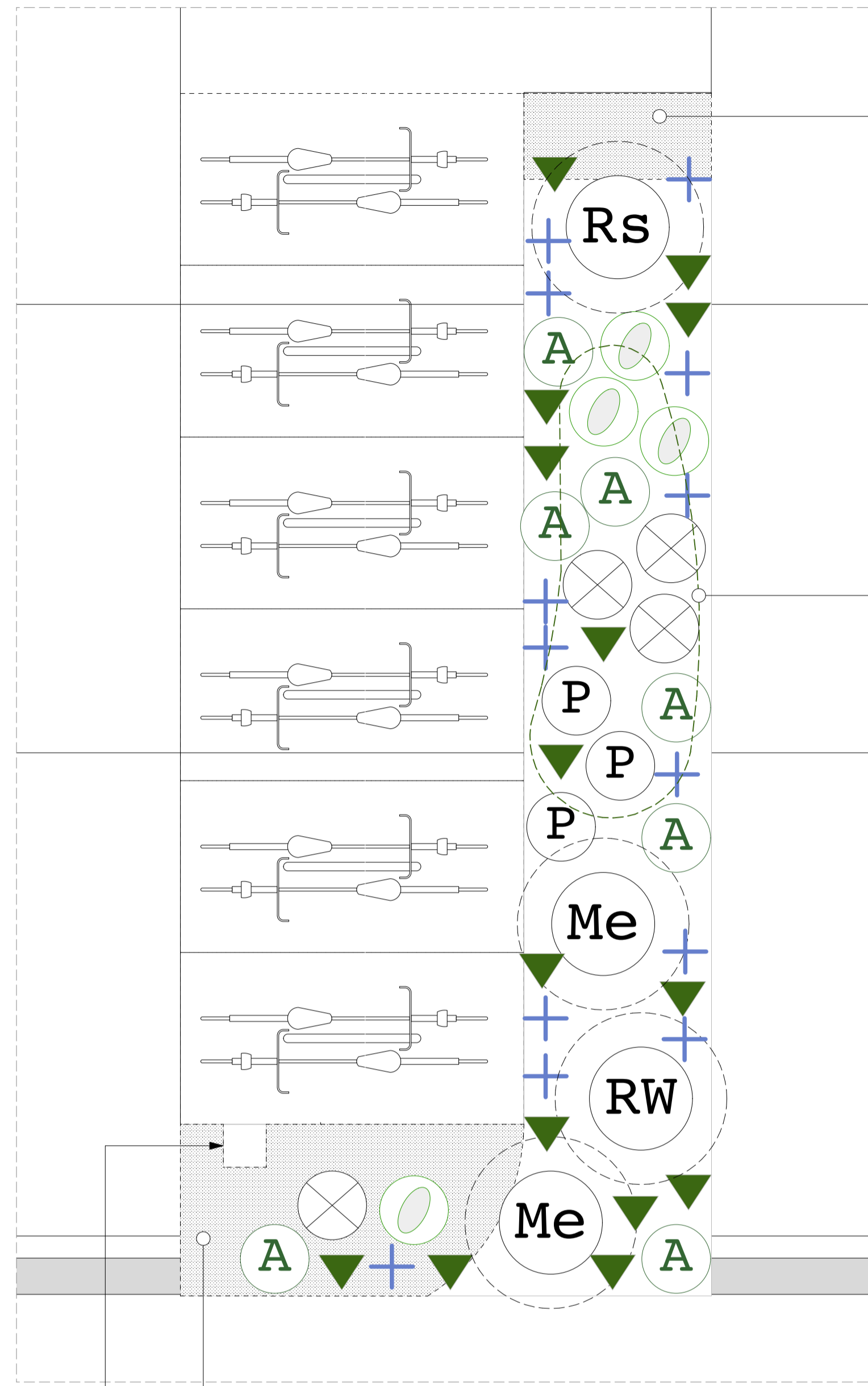


Central garden - Area D



Edge matrix 1 (shadier): 0.5m2
All plants to be 2L CG; distributed randomly throughout the area shown to the numbers & percentages below, to achieve a naturalistic appearance (7 plants/m2)

Herbaceous plants:
- Geranium phaeum 'Album' - 40% - 2no.
- Vinca minor 'Gertrude Jekyll' - 30% - 1no.
Grasses:
- Sesleria heufleriana - 30% - 1no.

Bulbs: 2m2
Narcissus poeticus var. recurvus (8/m2)
- sow in drifts as shown on drawing, to achieve naturalistic appearance - 16no.

Mid-height (transition):
Plant as directed by symbol below, to achieve an overall density of 7 plants/m2

- Herbaceous plants, 2L CG:**
- + - Achillea filipendulina 'Parker's Variety'- 13no.
 - - Aster cordifolius 'Little Carlow'- 4no.
 - ⊗ - Monarda didyma 'Jacob Cline'- 4no.
 - P - Persicaria amplexicaulis 'Rosea'- 3no.
 - ▼ - Polystichum setiferum 'Herrenhausen'- 15no.
- Grasses, 2L CG:**
- A - Anemantele lessoniana- 7no.

Shrubs - 10L CG
Plant as directed by symbol below

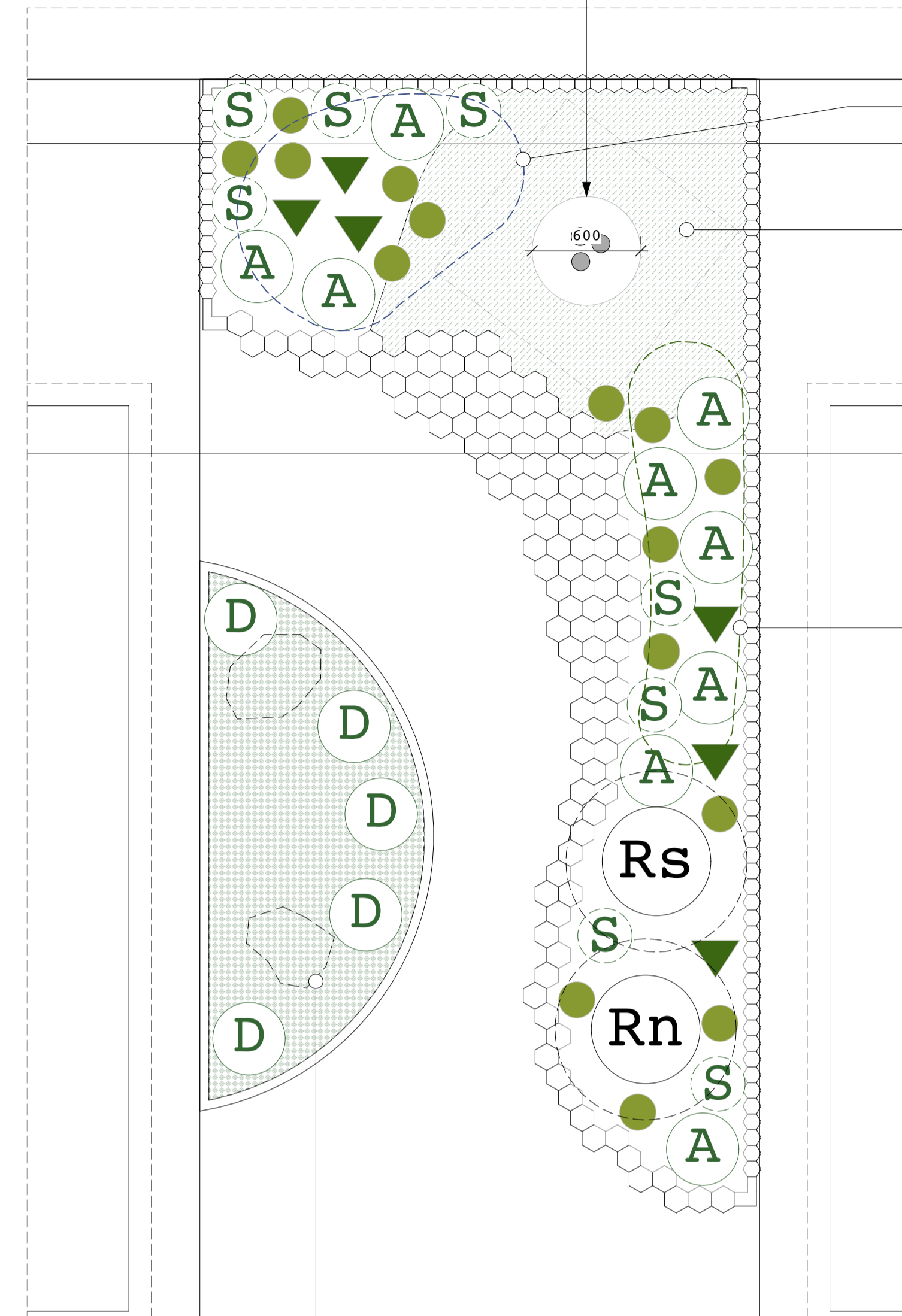
- Me - Mahonia eurybracteata subsp. ganpinensis 'Soft Caress' - 2no.
- Rs - Ribes sanguineum - 1no.
- RW - Ribes sanguineum 'White Icicle' - 1no.

Edge matrix 1 (shadier): 2m2
All plants to be 2L CG; distributed randomly throughout the area shown to the numbers & percentages below, to achieve a naturalistic appearance (7 plants/m2)

Herbaceous plants:
- Geranium phaeum 'Album' - 40% - 6no.
- Vinca minor 'Gertrude Jekyll' - 30% - 4no.
Grasses:
- Sesleria heufleriana - 30% - 4no.

Irrigation standpipe;
refer to SP108_82_LE & relevant engineer's information

Play garden - Area E



Proposed small multi-stem tree;
75mm mulch in circle 0.6m diameter
around stem, to be left free of
planting. Refer to SP108_73_SC

Tuberous perennials: 1.5m2
Cyclamen hederifolium (10/m2) - plant in drifts as shown on drawing, to achieve naturalistic appearance - 15no.

Tree understorey matrix: 3m2
All plants to be 2L CG; distributed randomly throughout the area shown to the numbers & percentages below, to achieve a naturalistic appearance (7 plants/m2)

Herbaceous plants:
- Dicentra formosa - 30% - 6no.
Grasses:
- Anemantele lessoniana - 20% - 4no.
- Carex 'Ice Dance' - 30% - 6no.
- Luzula nivea - 20% - 4no.

Bulbs: 1.5m2
Narcissus 'Tete a Tete' (10/m2) - sow in drifts as shown on drawing, to achieve naturalistic appearance - 20no.

Mid-height (play garden):
Plant as directed by symbol below, to achieve an overall density of 7 plants/m2

- Herbaceous plants, 2L CG:**
- ▼ - Polystichum setiferum 'Herrenhausen'- 6no.
 - - Sanguisorba officinalis 'Red Thunder'- 15no.
- Grasses, 2L CG:**
- A - Anemantele lessoniana - 9no.
 - S - Sesleria heufleriana - 8no.

Shrubs - 10L CG
Plant as directed by symbol below

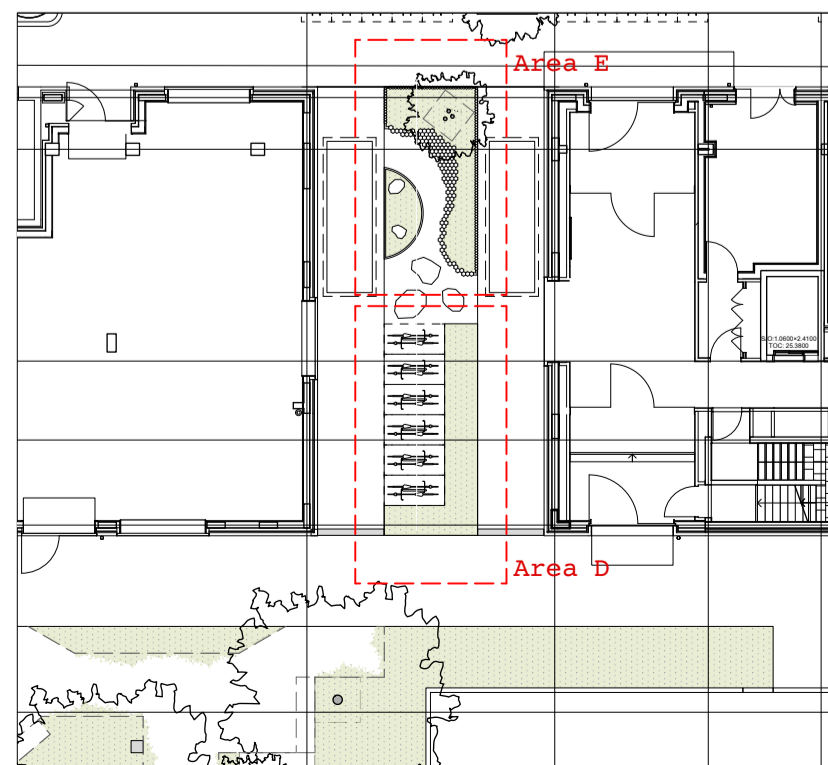
- Rs - Ribes sanguineum - 1no.
- Rn - Ribes nigrum 'Ben Connan' - 1no.

Robust grass matrix: 2.5m2
All plants to be 2L CG; distributed randomly throughout the area shown to the numbers & percentages below, to achieve a naturalistic appearance (7 plants/m2)

Herbaceous plants:
- Sanguisorba officinalis 'Pink Tanna' - 30% - 5no.
Grasses:
- Carex 'Ice Dance' - 40% - 5no.
- Sesleria heufleriana - 30% - 5no.

Grasses, 2L CG (as positioned):
- Deschampsia cespitosa 'Goldschlieier' - 5no.

*NOTE: Planting to be filled around stone boulder play elements, to achieve naturalistic setting



Notes:

- Refer to separate Tree Survey by Tim Moya Associates (March 2019) - RPA information taken from Tree Survey.
- Refer to Tree Protection Plan and Arboricultural Impact Assessment by Tim Moya Associate (Jan-20).

This drawing must be printed and read in full colour.

Proposed trees:
- Refer to SP108_01_GP and planting schedule

Topsoil/growing medium for planting:
- Refer to Q28/711 in landscape specification SP108_Doc04_LS for summary of growing medium & depths

Establishment fencing:
- Refer to Q31/730 in landscape specification SP108_Doc04_LS
- Refer also to planting schedule SP108_Doc05_PS

Rev	Date	Description
T1	30.10.20	Issued for Tender
T2	18.02.22	Update plan layout

JCLA

Jonathan Cook Landscape Architects Ltd
3A Iliffe Yard
LONDON SE17 3QA
Tel +44 (0)207 703 3270
www.jcla.co.uk

© JCLA

Do not scale from this drawing. Any discrepancies or queries should be brought to the attention of the authors. Dimensions are to be verified on site prior to construction.

To be read in conjunction with all relevant Architects', Services and Structural Engineers' drawings.

All existing site, tree and building information has been compiled from different sources.

Refer to current revisions of all referenced files.

Client W.RE	
Project SP108: St Pancras Commercial centre	
Drawing Title Proposed planting plan: Public space - Areas D and E	
Drawing Number SP108-31-PP-3	
Date 18.02.22	Revision T2
Scale (@ A1) 1:25	Drawing Status Stage 4