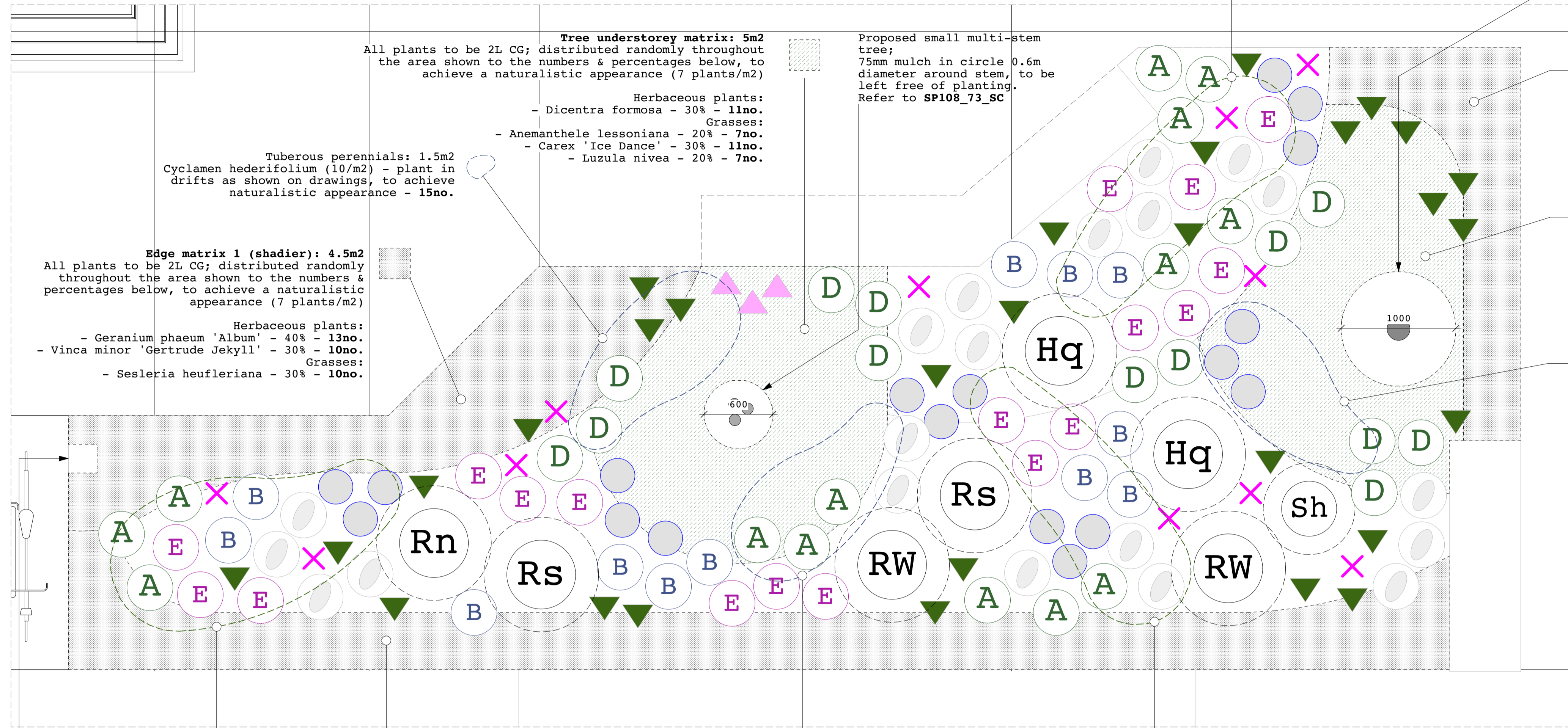


Central garden - Area A



**Bulbs: 3m2**  
Galanthus nivalis (12/m2) - sow in drifts as shown on drawing, to achieve naturalistic appearance - 36no.

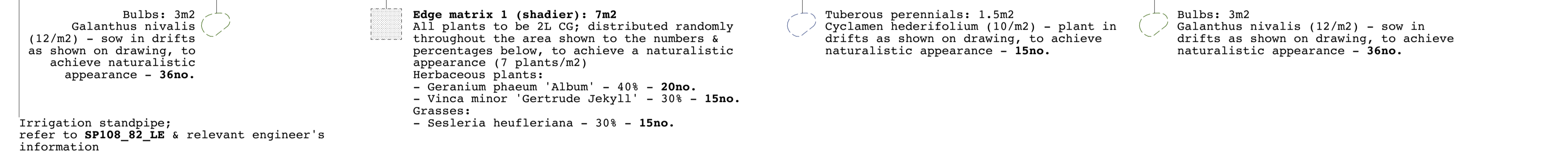
**Mid-height (shade):**  
Plant as directed by symbol below, to achieve an overall density of 7 plants/m2

Herbaceous plants, 2L CG:  
 ○ - Aster divaricatus - 20no.  
 ○ - Brunnera macrophylla 'Jack Frost' - 12no.  
 ○ - Epimedium grandiflorum 'Lilafee' - 18no.  
 ○ - Anemone x hybrida 'Honore Jobert' - 18no.  
 ▼ - Polystichum setiferum 'Herrenhausen' - 29no.  
 ▲ - Digitalis purpurea - 3no.

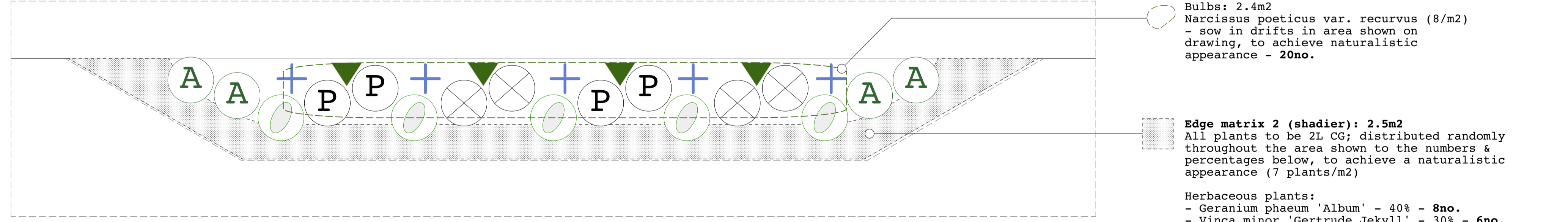
Grasses, 2L CG:  
 ○ - Anemanthele lessoniana - 14no.  
 ○ - Deschampsia cespitosa 'Goldschlieier' - 13no.  
 ✕ - Luzula nivea - 11no.

**Shrubs - 10L CG**  
Plant as directed by symbol below

○ (Hq) - Hydrangea quercifolia - 2no.  
 ○ (Rs) - Ribes sanguineum - 2no.  
 ○ (RW) - Ribes sanguineum 'White Icicle' - 2no.  
 ○ (Rn) - Ribes nigrum 'Ben Connan' - 1no.  
 ○ (Sh) - Sarcococca hookeriana var. Digyna - 1no.



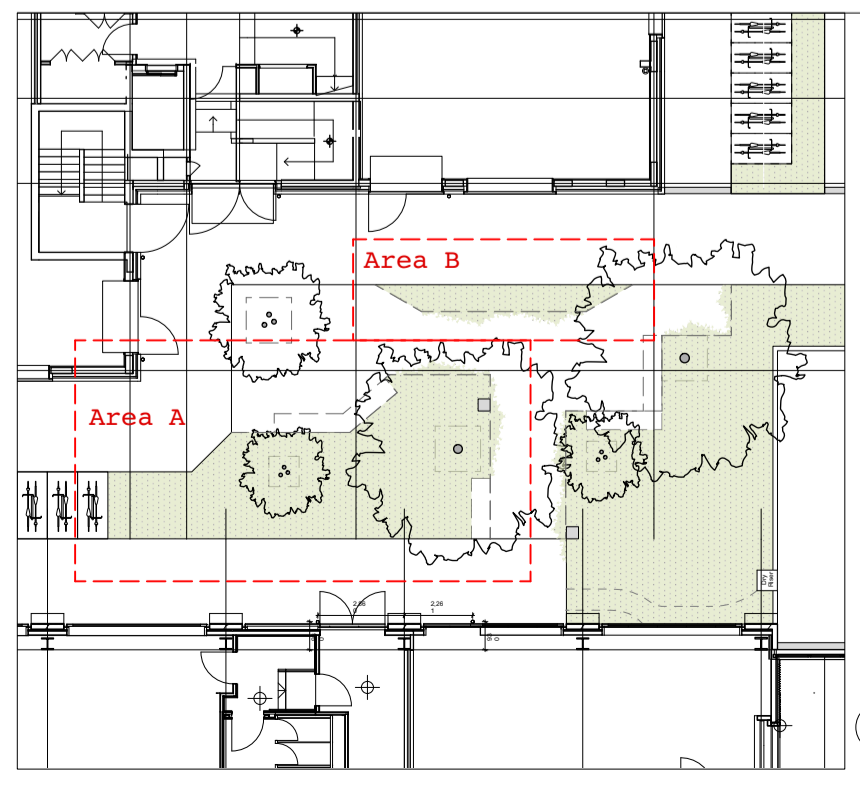
Central garden - Area B



**Mid-height (transition):**  
Plant as directed by symbol below, to achieve an overall density of 7 plants/m2

Herbaceous plants, 2L CG:  
 + - Achillea filipendulina 'Parker's Variety' - 5no.  
 ○ - Aster cordifolius 'Little Carlow' - 5no.  
 ⊗ - Monarda didyma 'Jacob Cline' - 4no.  
 ○ (P) - Persicaria amplexicaulis 'Rosea' - 4no.  
 ▼ - Polystichum setiferum 'Herrenhausen' - 4no.

Grasses, 2L CG:  
 ○ (A) - Anemanthele lessoniana - 4no.



**Notes:**

- Refer to separate Tree Survey by Tim Moya Associates (March 2019) - RPA information taken from Tree Survey.
- Refer to Tree Protection Plan and Arboricultural Impact Assessment by Tim Moya Associate (Jan-20).

**This drawing must be printed and read in full colour.**

**Proposed trees:**  
- Refer to SP108\_01\_GP and planting schedule

**Topsoil/growing medium for planting:**  
- Refer to Q28/711 in landscape specification SP108\_Doc04\_LS for summary of growing medium & depths

**Establishment fencing:**  
- Refer to Q31/730 in landscape specification SP108\_Doc04\_LS

- Refer also to planting schedule SP108\_Doc05\_PS

Rev	Date	Description
P1	05.08.19	Issued for planning
P2	25.11.19	Amended tree species
S31	03.02.20	Stage 3 issue
T1	30.10.20	Issued for Tender
T2	18.02.22	Updated plan layout & dry riser position

**JCLA**  
Jonathan Cook Landscape Architects Ltd  
3A Iliffe Yard  
LONDON SE17 3QA  
Tel +44 (0)207 703 3270  
www.jcla.co.uk

© JCLA

Do not scale from this drawing. Any discrepancies or queries should be brought to the attention of the authors. Dimensions are to be verified on site prior to construction.

To be read in conjunction with all relevant Architects', Services and Structural Engineers' drawings.

All existing site, tree and building information has been compiled from different sources.  
Refer to current revisions of all referenced files.

Client W.RE	
Project SP108: St Pancras Commercial centre	
Drawing Title Proposed planting plan: Public space - Areas A and B	
Drawing Number SP108-31-PP-1	
Date 18.02.22	Revision T2
Scale (of A1) 1:25	Drawing Status Stage 4