



Service access road beyond

Central garden; textural planting mix with structure accents

Timber cobbles

Central garden; textural planting mix with structure accents

Linear garden in front of office building, with cycle stands framed by planting

Rooting volume provision for new trees

Structural void former, to engineer's spec

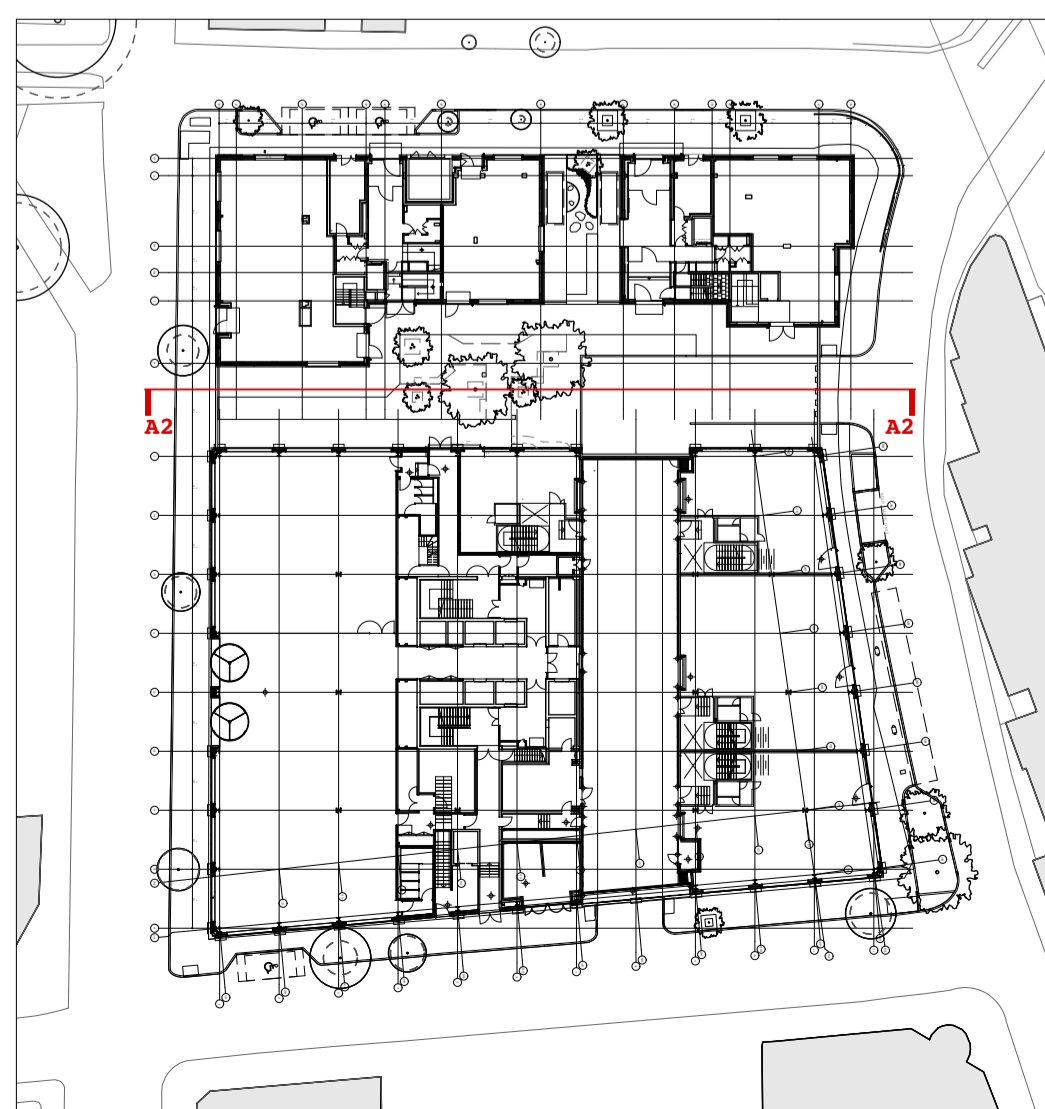
St Pancras Way

New vehicular junction with St Pancras Way

Public space and internal street

Footway

Royal College St



Key Plan  
1:750 @ A1

Notes:

- General note: Sections are for general arrangement purposes only - refer to landscape details and relevant consultant's information for further information.
- Refer to landscape overview plans SP108\_01\_GP, SP108\_02\_GM
- Refer to Architect's drawings for all building information and for surface levels/falls on top of the ground floor slab
- Refer to architect's/engineer's information for structural slab levels and setting out.

Rev	Date	Description
P1	05.08.19	Issued for Planning
P2	25.11.20	Retained certain trees on Royal College Street/Pratt St/ Georgiana St; amended proposed levels/falls
S31	03.02.20	Stage 3 issue
T1	30.10.20	Issued for Tender
T2	18.02.22	Updated plan layout & retaining wall removed

**JCLA**

Jonathan Cook Landscape Architects Ltd  
3A Iliffe Yard  
LONDON SE17 3QA  
Tel +44 (0)207 703 3270  
www.jcla.co.uk

© JCLA

Do not scale from this drawing. Any discrepancies or queries should be brought to the attention of the authors. Dimensions are to be verified on site prior to construction.

To be read in conjunction with all relevant Architects', Services and Structural Engineers' drawings.

All existing site, tree and building information has been compiled from different sources.  
Refer to current revisions of all referenced files.

Client W.RE	
Project SP108: St Pancras Commercial centre	
Drawing Title Proposed landscape section A-A - 02: Looking south	
Drawing Number SP108-51-A2	
Date 18.02.22	Revision T2
Scale (@ A1) 1:100	Drawing Status Stage 4