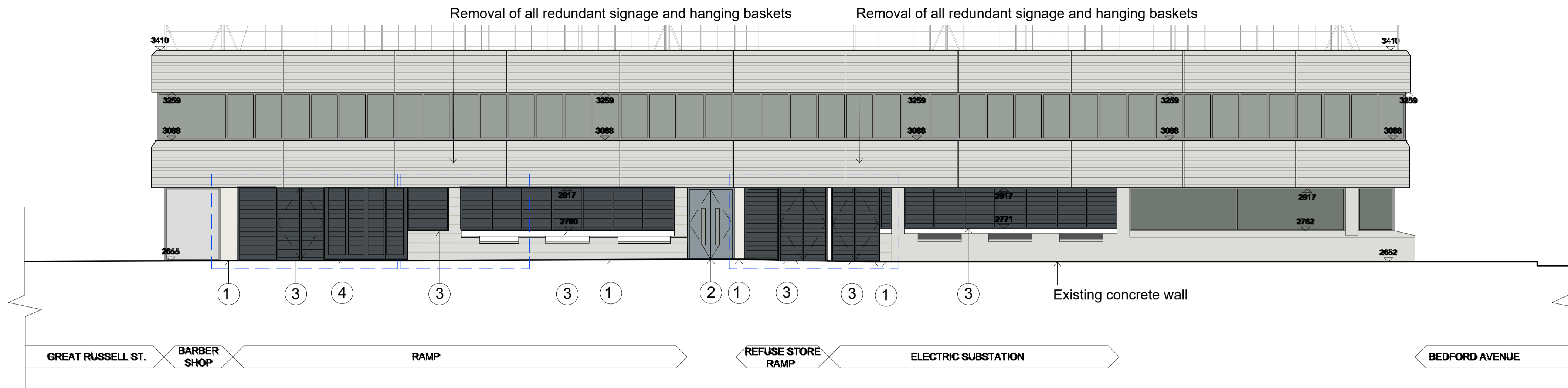


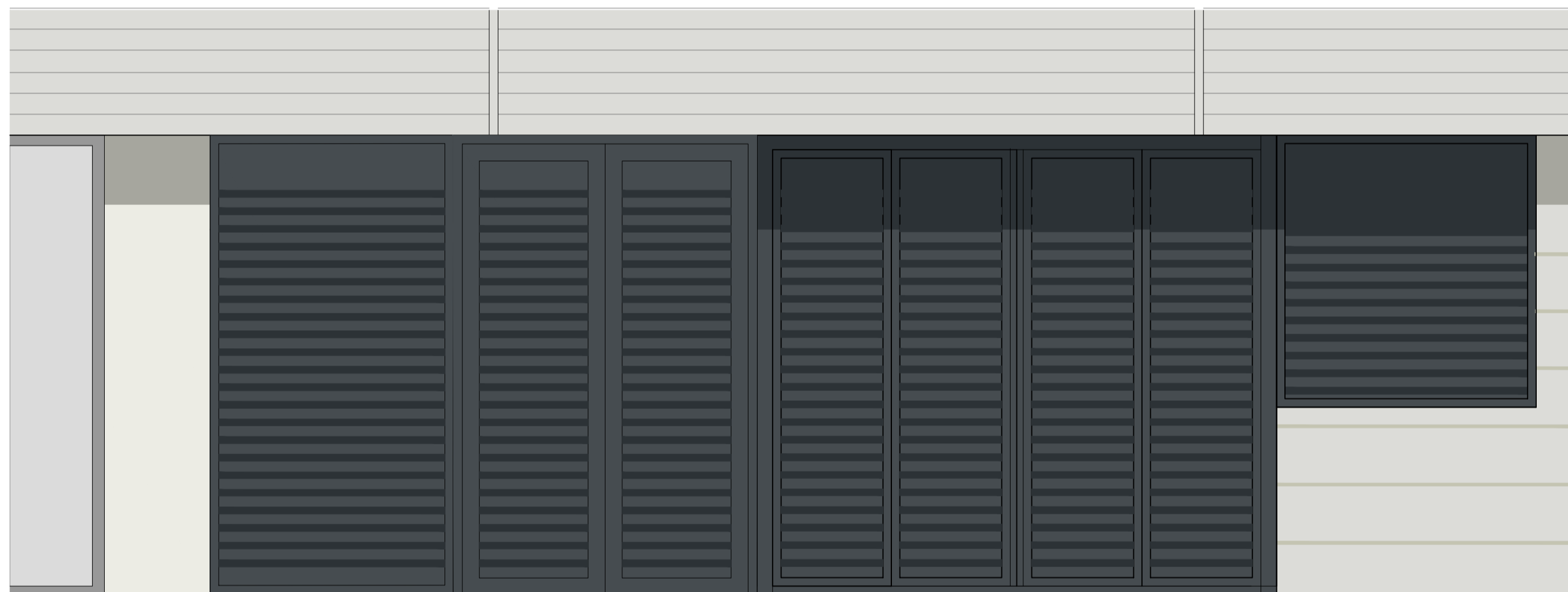
North East Elevation: Adeline Place scale 1:200



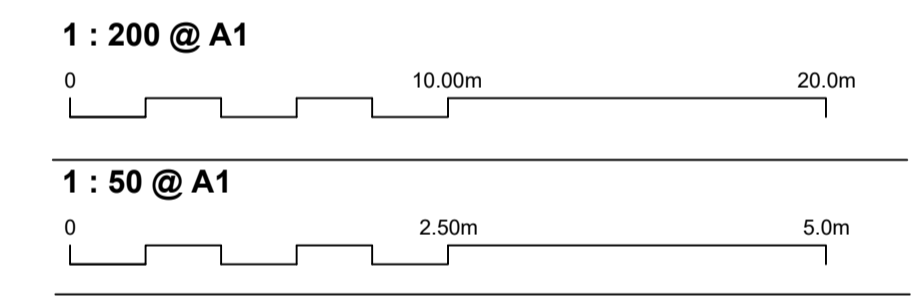
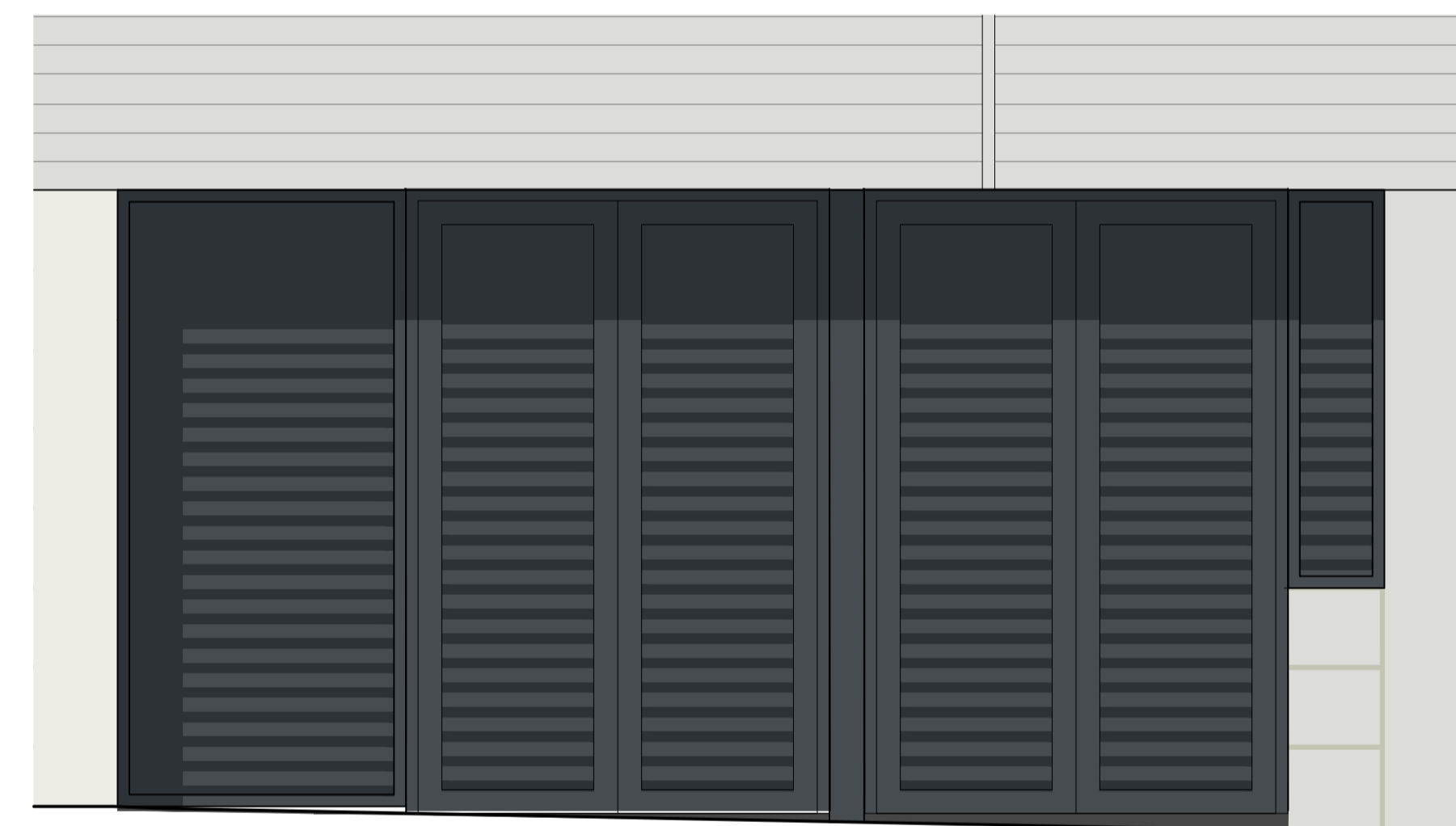
**MATERIAL KEY**

- 1 Equitone (tectiva) fibre cement cladding panels or similar - colour T10 Linen.
- 2 Steel doorset with vision panel. 2a: Colour cream RAL 7001
- 3 Ventilation louvre panel and door. Frame dark grey RAL 7016
- 4 Louvre bifolding metal security gates to ramp. Colour light grey RAL 7016

Elevation scale 1:50



Refuse area & Electric Substation Elevation scale 1:50



Project Stage  
**For Planning**

Client  
**Criterion Capital Ltd.**

Project  
**Great Russell Street**

Title  
**Proposed Elevation Adeline Place**

REV	DATE	DESCRIPTION	CHK
P1	26.03.20	For Approval	MH
P2	04.03.22	Notes amended	BM

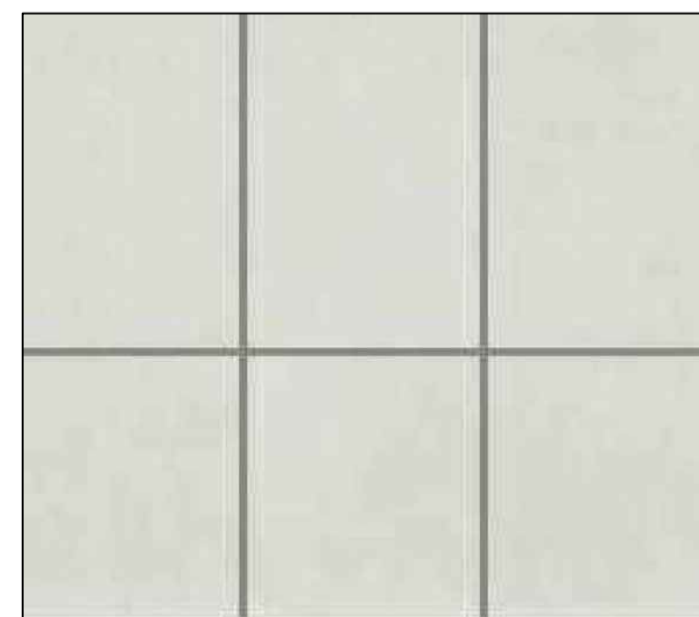
Drawing No. **GRS-0170** Rev. **P2**

Project No.	VARIOUS SCALES		
<b>003</b>	Drawn	Checked	Date
	MH	MH	2/13/20

Do not scale from this drawing. All dimensions should be checked and confirmed on site before the commencement of work. All discrepancies must be reported. Subcontractors must verify all dimensions on site before making a shop drawing or commencing manufacturing.

This drawing is subject to copyright. ©

1 Equitone (tectiva) fibre cement cladding panels or similar - colour T10 Linen.



Fibre cement cladding to be used to mirror the proportion of the banding on the facade of the hotel building opposite, with a similar colour used.

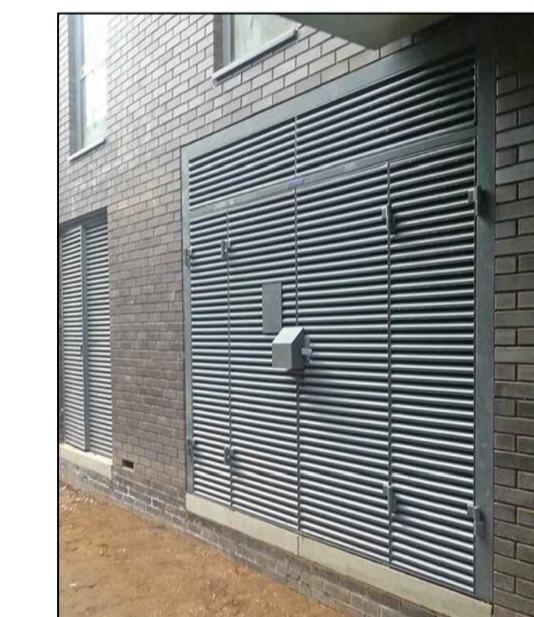
2 Steel doorset with vision panel.



3 Ventilation louvre panel and door. Colour dark grey RAL 7016



4 Bifolding metal security gates to ramp. Colour dark grey RAL 7016



Example of gate to the service ramp.