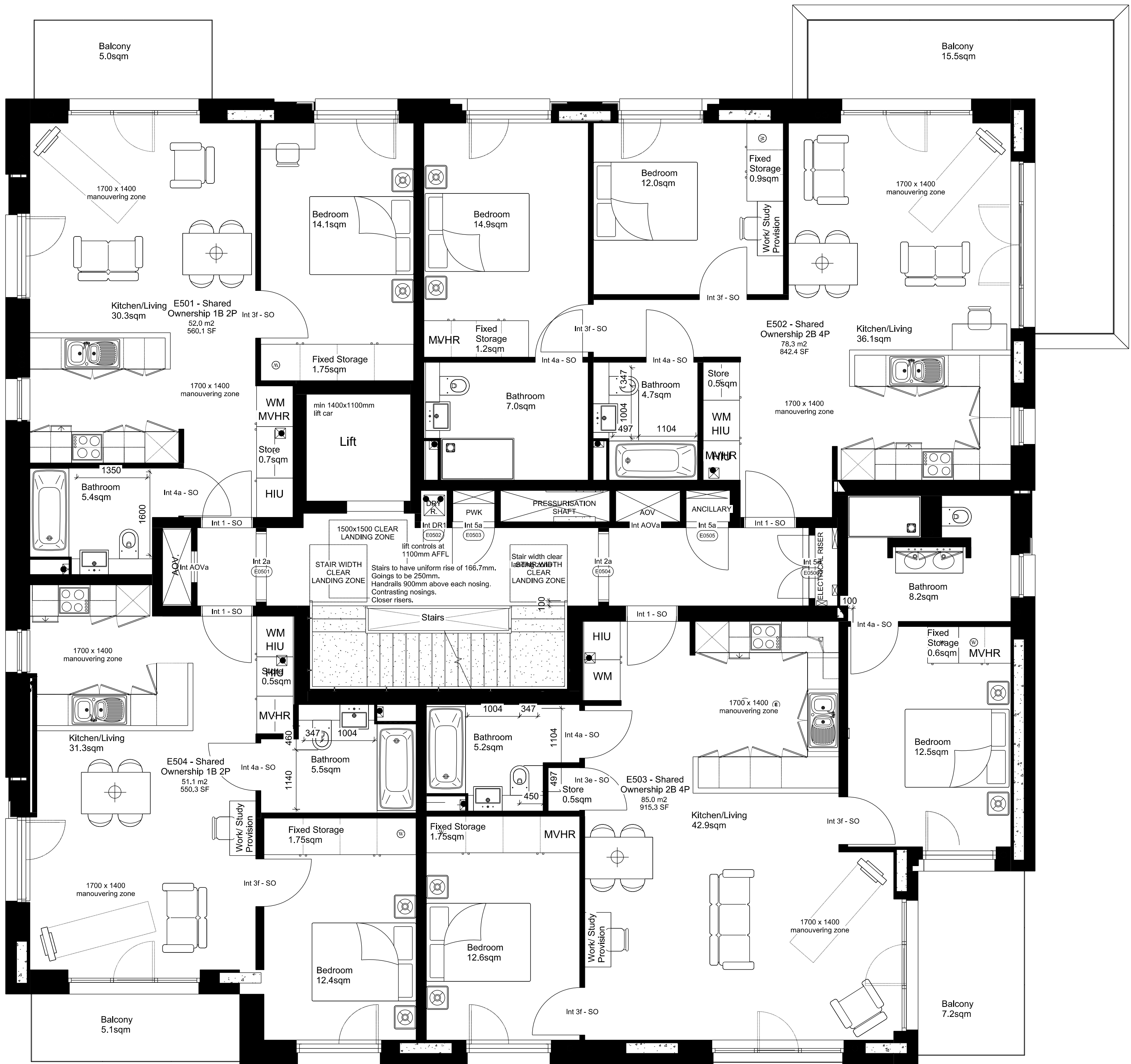
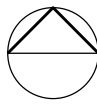
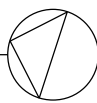


West Hampstead Square - Key Plan
NTS

BUILDING E (MILNE BUILDING)



FOR PLANNING APPROVAL



1 Block E - Fifth Floor Plan

Scale 1:100 at A3

<div>COMMON GROUND WORKSHOP</div> <div>COPYRIGHT AND NOTES</div> <div>DO NOT SCALE FROM THIS DRAWING. ALL DIMENSIONS TO BE VERIFIED ON SITE BY CONTRACTOR PRIOR TO COMMENCEMENT OF ANY SHOP DRAWINGS AND ANY WORKS ON SITE. REPORT ALL DISCREPANCIES TO THE ARCHITECT IMMEDIATELY.</div> <div>THIS DRAWING IS TO BE READ IN CONJUNCTION WITH ALL RELATED ARCHITECT/ENGINEERS DRAWINGS/DETAILS AND ALL OTHER RELEVANT INFORMATION.</div>	<div>COMMON GROUND WORKSHOP LTD</div> <div>The Common E2</div> <div>53 Old Bethnal Green Rd, London, E2 6QA</div> <div>T 077 65257123</div> <div>info@commongroundworkshop.co.uk</div> <div>www.commongroundworkshop.co.uk</div>	AMENDMENTS				CONSULTANT(S)	ADDITIONAL NOTES:	<div>This drawing is issued in DWG format; this is an uncontrolled version issued to enable the recipient to prepare their own drawings for which they are solely responsible. It is based on background information current at the time of issue. No liability is accepted for any such alterations or additions or to discrepancies arising out of changes to such background information which occurs after it is issued.</div> <div>Contractor and Sub-Contractors to site measure and confirm all dimensions before fabricating and constructing built elements. Where discrepancies found, Contractor/ Sub-Contractor to inform Design Team.</div> <div>Do not scale from this drawing.</div> <div>Report any errors, contradictions, & omissions to the architect as soon as possible.</div>	CLIENT(S)	PROJECT	DRAWING TITLE(S)	SCALE	DRAWN	CHECKED
		REV	DATE	DESCRIPTION	BY	CC	1:100 @A3					CC	MS	
			A	27.08.2021	FOR PLANNING APPROVAL									
												PROJECT NUMBER	DATE	
												CGW-BDR-WHS-0114	AUG 2021	
							DRAWING NUMBER	REVISION						
							BDR-WHS-PA-A-BE-1006		A					