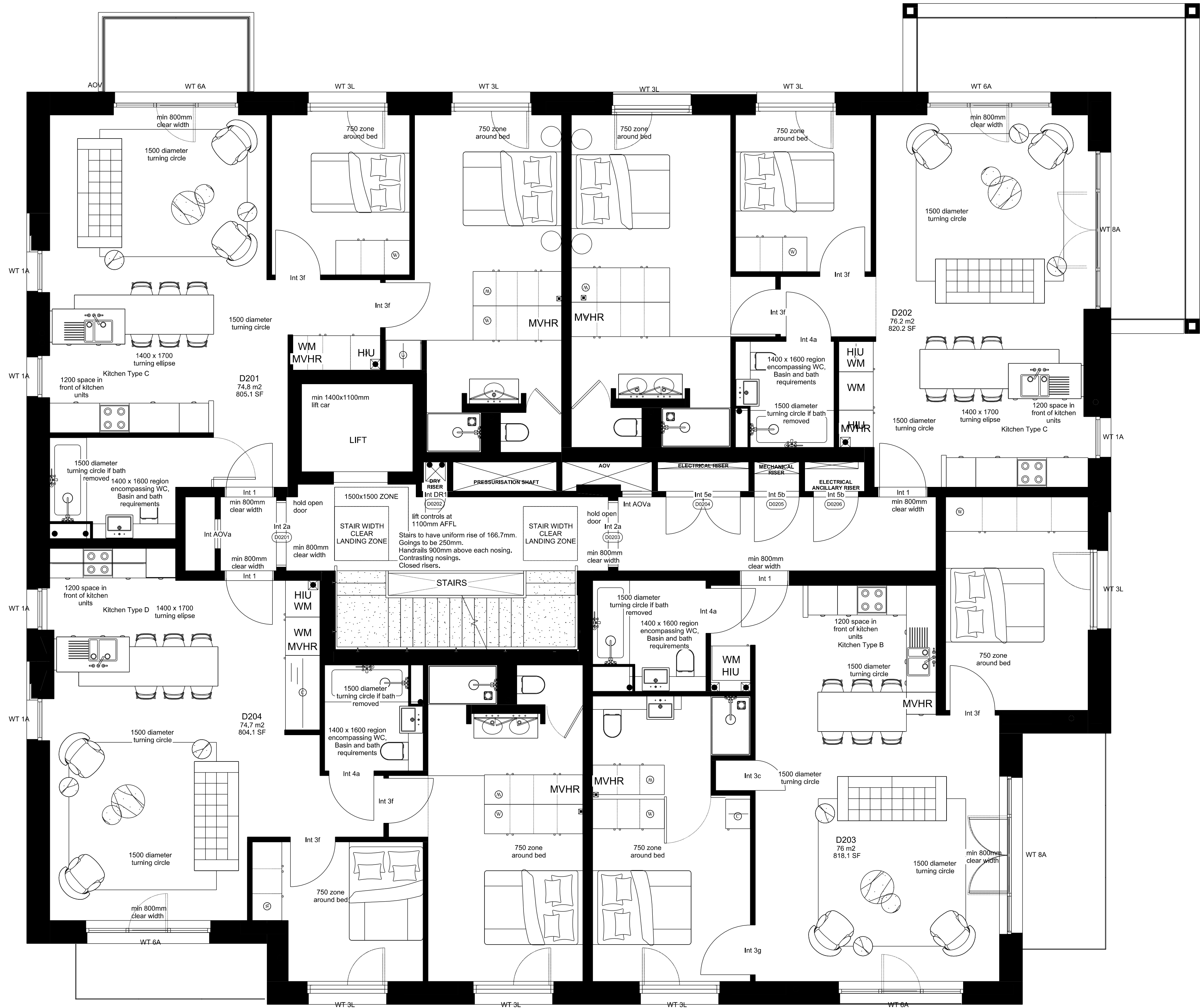
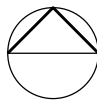


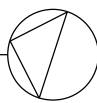
## West Hampstead Square - Key Plan

NTS

D BUILDING D (LESSING BUILDING)



FOR PLANNING APPROVAL



### Block D - Second Floor Plan

Scale 1:100 at A3

#### COMMON GROUND WORKSHOP

COPYRIGHT AND NOTES  
DO NOT SCALE FROM THIS DRAWING. ALL DIMENSIONS TO BE VERIFIED ON SITE BY CONTRACTOR PRIOR TO COMMENCEMENT OF ANY SHOP DRAWINGS AND ANY WORKS ON SITE. REPORT ALL DISCREPANCIES TO THE ARCHITECT IMMEDIATELY.  
THIS DRAWING TO BE READ IN CONJUNCTION WITH ALL RELATED ARCHITECT/ENGINEERS DRAWINGS/DETAILS AND ALL OTHER RELEVANT INFORMATION.

#### COMMON GROUND WORKSHOP LTD

The Common E2  
53 Old Bethnal Green Rd, London, E2 6QA

T 077 65257123  
info@commongroundworkshop.co.uk  
www.commongroundworkshop.co.uk

#### AMENDMENTS

REV	DATE	DESCRIPTION	BY
A	27.08.2021	FOR PLANNING APPROVAL	CC

#### CONSULTANT(S)

Project Manager: -  
Structural Engineer: -  
MEP Services Engineer: -  
Planning Consultant: -  
Daylight / Sunlight Consultant: -  
Cost Consultant: -

#### ADDITIONAL NOTES:

All dimensions in MM unless otherwise stated.  
This drawing is to be read in conjunction with all relevant documents.  
This drawing is to be read in conjunction with all Engineer's drawings. Contractor to provide Structural Engineering/ design.  
Do not scale from this drawing.  
Report any errors, contradictions, & omissions to the architect as soon as possible.

#### ADDITIONAL NOTES:

All dimensions in MM unless otherwise stated.  
This drawing is issued in DWG format: this is an uncontrolled version issued to enable the recipient to prepare their own drawings for which they are solely responsible. It is based on background information current at the time of issue. No liability is accepted for any such alterations or additions to or discrepancies arising out of changes to such background information which occurs after it is issued.  
Contractor and Sub-Contractors to site measure and confirm all dimensions before before fabricating and constructing built elements. Where discrepancies found, Contractor/ Sub-Contractor to inform Design Team.

#### CLIENT(S)

WEST HAMPSTEAD SQUARE LLP  
C/O BALLYMORE ASSET  
MANAGEMENT LTD

#### PROJECT

WEST HAMPSTEAD SQUARE -  
DECKING REPLACEMENT

#### DRAWING TITLE(S)

EXISTING BLOCK D  
(LESSING BUILDING) -  
SECOND FLOOR PLAN

SCALE 1:100 @A3	DRAWN CC	CHECKED MS
PROJECT NUMBER CGW-BDR-WHS-0114	DATE AUG 2021	
DRAWING NUMBER BDR-WHS-PA-A-BD-1003	REVISION A	