



BUILDING B (ORWELL BUILDING)

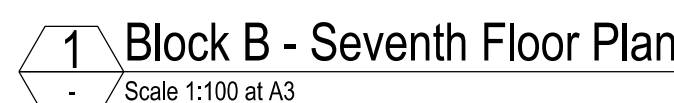


Yellow shaded area indicates area of existing timber balcony decking to be replaced with 'Mydek Delta 20 Decking System' which is a durable, non-combustible, aluminium decking system designed to enhance balconies and terraces, available in a range of standard finishes.

Mydek is compatible with the full range of support systems from MyDek for fast and accurate installation. MyDek is a speedy & accurate decking solution.

BOARD DIMENSIONS:
Board width x depth 144 x 20mm (150mm module)
Board length 4.2m or cut-to-length (subject to conditions)
Weight 12.47 kg/sqm

BOARD MATERIAL:
Board Aluminium grade 6063-T6
Expansion allowance 1mm per linear metre
Finish Polyester Powder Coating – 80micron
slip-resistant



<div>COMMON GROUND WORKSHOP</div> <div>COPYRIGHT AND NOTES</div> <div>DO NOT SCALE FROM THIS DRAWING. ALL DIMENSIONS TO BE VERIFIED ON SITE BY CONTRACTOR PRIOR TO COMMENCEMENT OF ANY SHOP DRAWINGS AND ANY WORKS ON SITE. REPORT ALL DISCREPANCIES TO THE ARCHITECT IMMEDIATELY.</div> <div>THIS DRAWING TO BE READ IN CONJUNCTION WITH ALL RELATED ARCHITECT/ENGINEERS DRAWINGS / DETAILS AND ALL OTHER RELEVANT INFORMATION</div>	<div>COMMON GROUND WORKSHOP LTD</div> <div>The Common Green 53 Old Bethnal Green Rd, London, E2 6QA</div> <div>T 077 65257123 info@commongroundworkshop.co.uk www.commongroundworkshop.co.uk</div>	AMENDMENTS		CONSULTANT(S)		ADDITIONAL NOTES: All dimensions in MM unless otherwise stated. This drawing is to be read in conjunction with all relevant documents. This drawing is to be read in conjunction with all Engineer's drawings. Contractor to provide Structural Engineering design. Do not scale from these drawings. Report any errors, contradictions, & omissions to the architect as soon as possible. This drawing is issued in DWG format; this is an uncontrolled version issued to enable the client to prepare their own drawings for which they are solely responsible. It is based on background information provided by the client. No liability is accepted for any such information or additions to or discrepancies arising out of changes to such background information which occur after it is issued. Contractor and Sub-Contractors to to site measure and confirm all dimensions before fabricating and constructing built elements. Where discrepancies found, Contractor/ Sub-Contractors as soon as possible	CLIENT(S) WEST HAMPSTEAD SQUARE LLP C/O BALLYMORE ASSET MANAGEMENT LTD	PROJECT WEST HAMPSTEAD SQUARE - DECKING REPLACEMENT	DRAWING TITLE(S) PROPOSED BLOCK B (ORWELL BUILDING) - SEVENTH FLOOR PLAN	SCALE	DRAWN	CHECKED	
		REV	DATE	DESCRIPTION	BY					CC	1:100 @A3	CC	MS
		A	27.08.2021	FOR PLANNING APPROVAL							PROJECT NUMBER CGW-BDR-WHS-0114	DATE AUG 2021	
											DRAWING NUMBER BDR-WHS-PA-A-BB-2008	REVISION A	