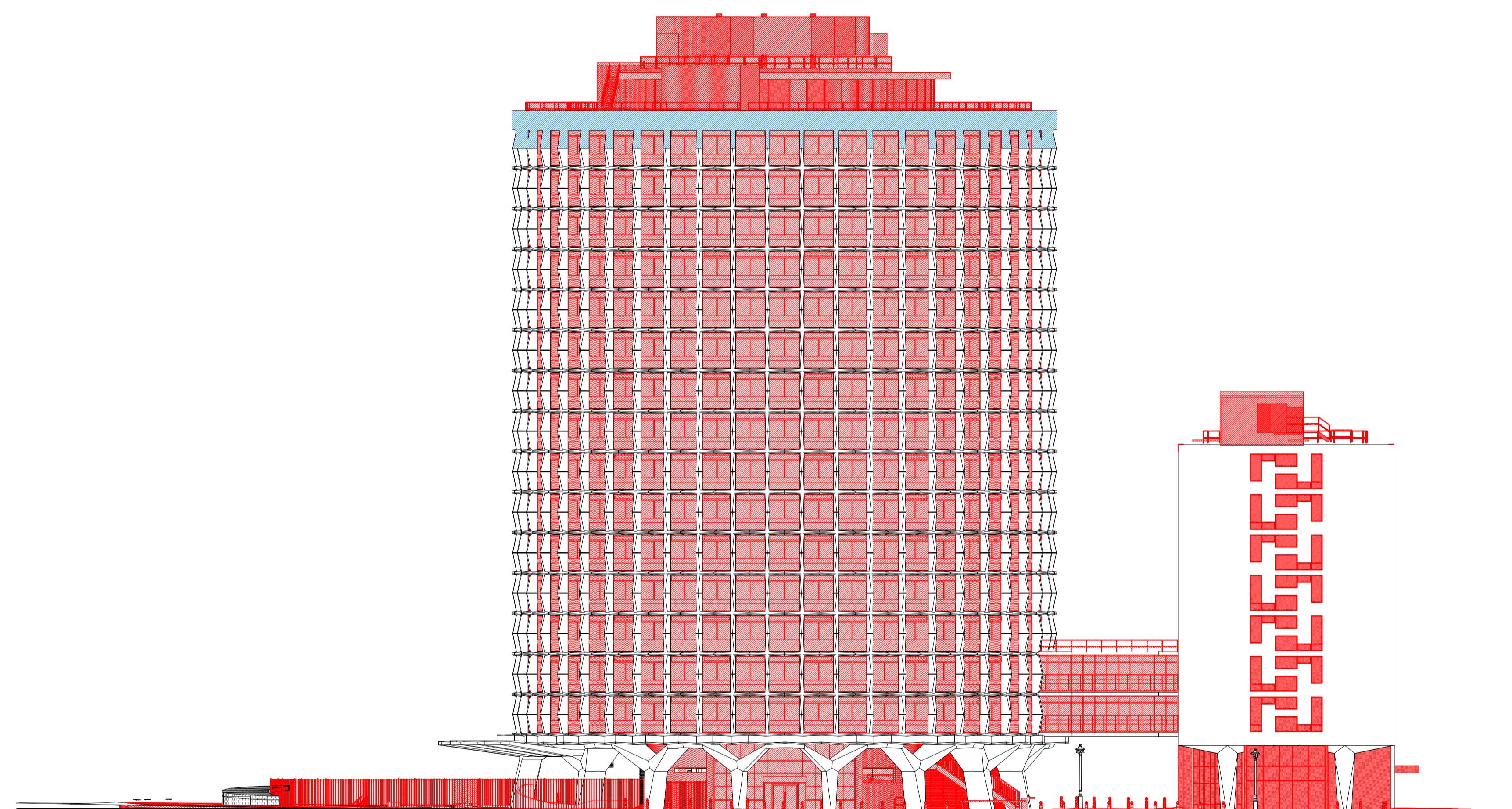
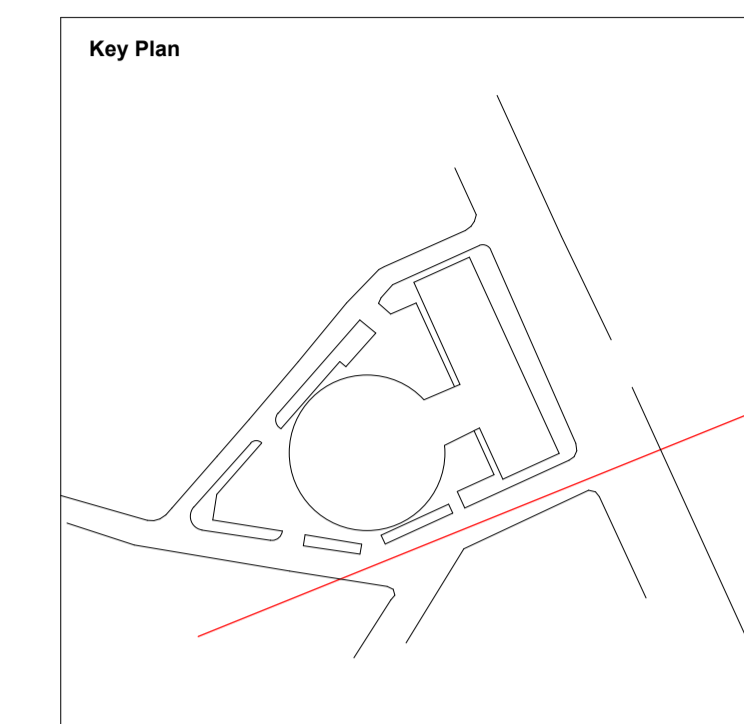


Do not scale from this drawing. All dimensions to be checked on site. All omissions and discrepancies to be reported to the Architect immediately

This work is copyright and shall not be reproduced or used for any other purpose without the written permission of Squire and Partners.



■ Demolished Structural Elements
Refer to structural engineers' drawings.

■ Fabric to be demolished

* Typical floor demolition is windows only
* All floor finishes and raised floor to be removed.

■ Existing pre-cast concrete panels to be retained and reused for the new level 17 cap. Refer to Structural Engineer's drawings.

Description	Date	Chk	Rev
Non-Material Amendment Issue	09/02/22	SQP	D
Pre-Application Advice	08/07/20	SQP	C
Planning Substitution	20/09/19	SQP	B
Planning Submission	24/05/19	SQP	A

SQUIRE & PARTNERS

Squire and Partners LLP
The Department Store
248 Ferndale Road, London SW9 8FR
T: 020 7278 5555

info@squireandpartners.com
www.squireandpartners.com

Project

Space House
London
WC2

Title

South Elevation
Demolition

Status

Planning Submission

Date	Scale @ ISO A1	Job Number
24/05/19	1 : 250	18077

Drawing Number	Revision
18077-SQP-01-ZZ-DE-A-PL01300	D

Scale 1:250
0 2.5 5 7.5 10 12.5