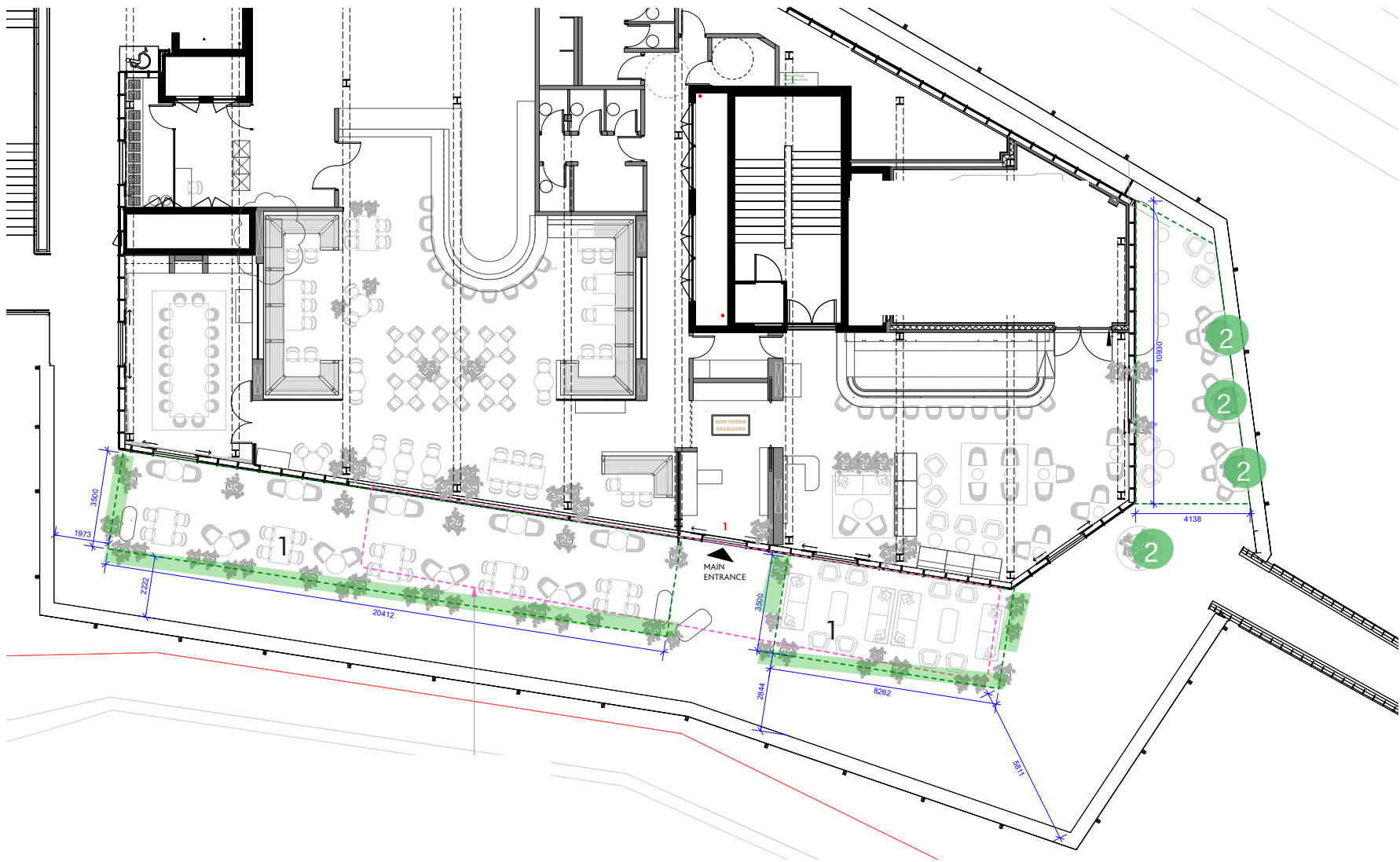


3.3 PROPOSAL FOR BIODIVERSITY

UNIT A1



2 - Larger fixed planters with integrated counter



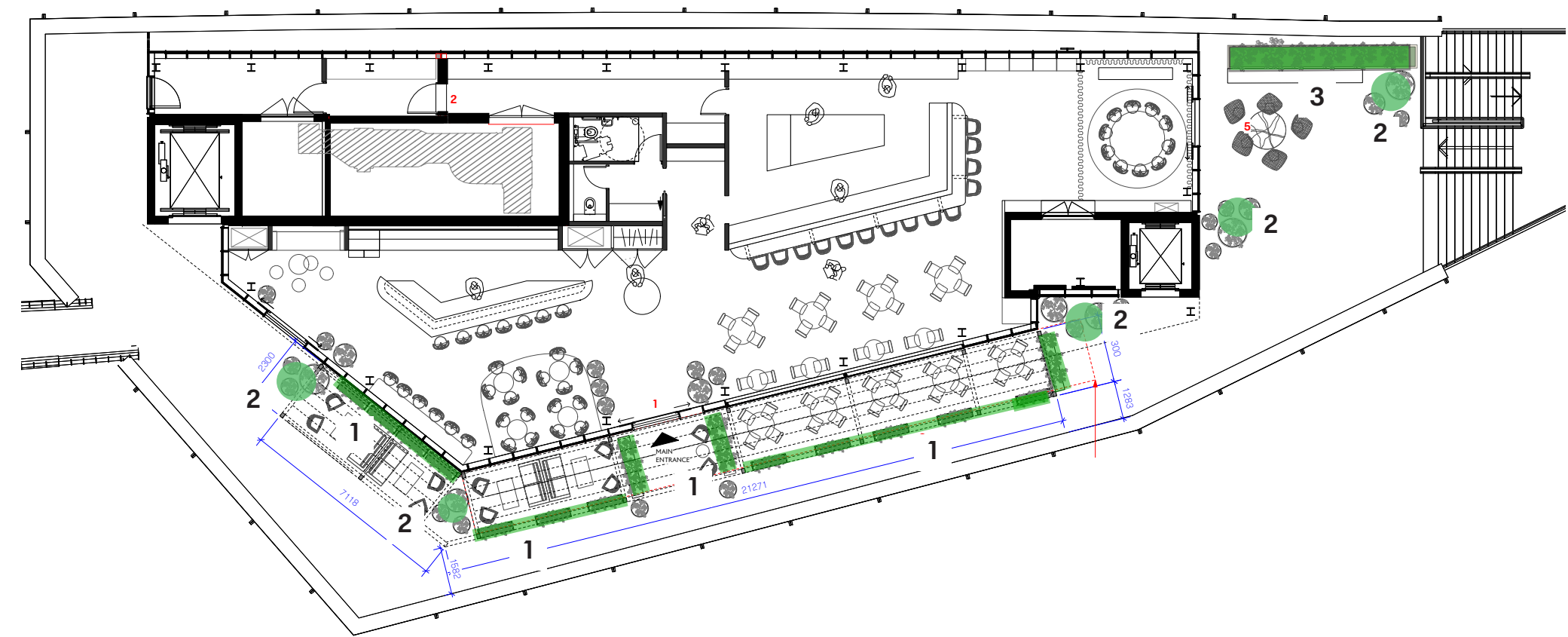
1 - Smaller loose planters dotted around the terrace area

A wide range of plants and flowers will be planted in the pots and planters, including grasses, climbers, small trees and flowers. This will provide a sensory experience for the public and visitors as well as helping to protect the exposed rooftop from adverse weather. Details of planting will be re-discharged under condition 31.



3.3 PROPOSAL FOR BIODIVERSITY

UNIT A2



Indicative image of big size terrace pots

Details of planting will be re-discharged under condition 31.



Indicative image of loose planters



Existing planting from benches to be replanted in new planters where possible



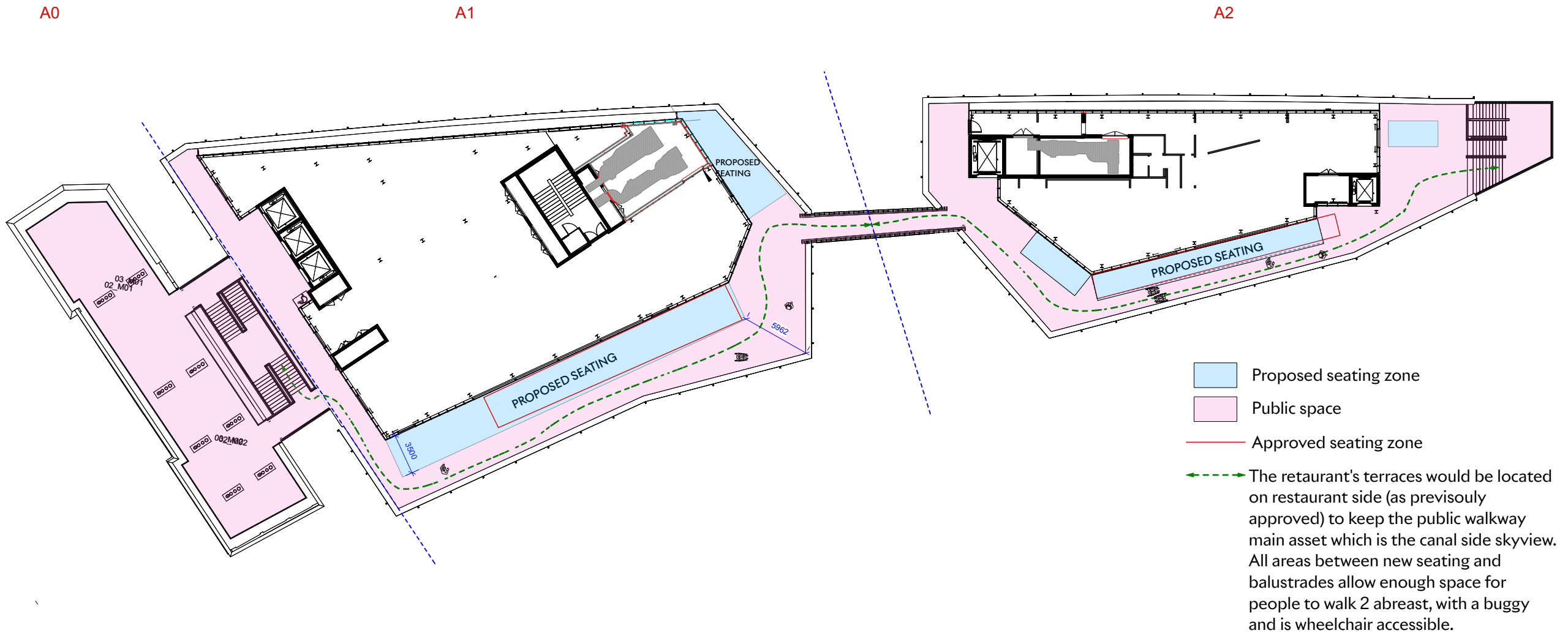


# Design & Access Statement

### 3.4 SEATING AREA AND PUBLIC SPACE

UNIT A1	Existing	Proposed	Uplift (+/-)
Area of seating	73 sqm	138 sqm	+ 89%
Area of public space	331 sqm	266 sqm	- 19.6%
Total	404 sqm	404 sqm	/

UNIT A2	Existing	Proposed	Uplift (+/-)
Area of seating	45 sqm	76 sqm	+ 68.9%
Area of public space	227 sqm	194 sqm	- 14.5%
Total	272 sqm	272 sqm	/



At paragraph 6.105 of the Officer's Report it notes that there is "a total public realm of 4,909sqm across the site (open spaces + terrace + routes)."

The terrace NMA proposals will result in a loss of 98 sqm of public space, this therefore, equates to the loss of under 2% of the total public realm of the masterplan.

4. CONCLUSION

The scheme at Hawley Wharf has been designed to respect the existing fabric and qualities of the site whilst keeping in consideration to the views and use of the rooftop.

The proposal seeks to invigorate the site and provide a high quality external space that is adaptable to the climate, and Covid pressure.

This proposal is about enlivening this part of the scheme and providing activation to draw more people up to enjoy the panoramic London views from the public space and to access one of the restaurant units at the site

We hope you have enjoyed reading our proposal for this project and we look forward to working together to bring this project to life.

Please read this Design & Access Statement alongside other documents.

LONDON

108 Palace Gardens Terrace  
London W8 4RT  
+44 (0)20 7221 1237

NEW YORK

150 West 25th Street  
Suite 901, New York 10001  
+1 (929) 343 5552

CONTACT US

[michaelisboyd.com](http://michaelisboyd.com)  
[@michaelisboyd](mailto:@michaelisboyd)  
[hello@michaelisboyd.com](mailto:hello@michaelisboyd.com)