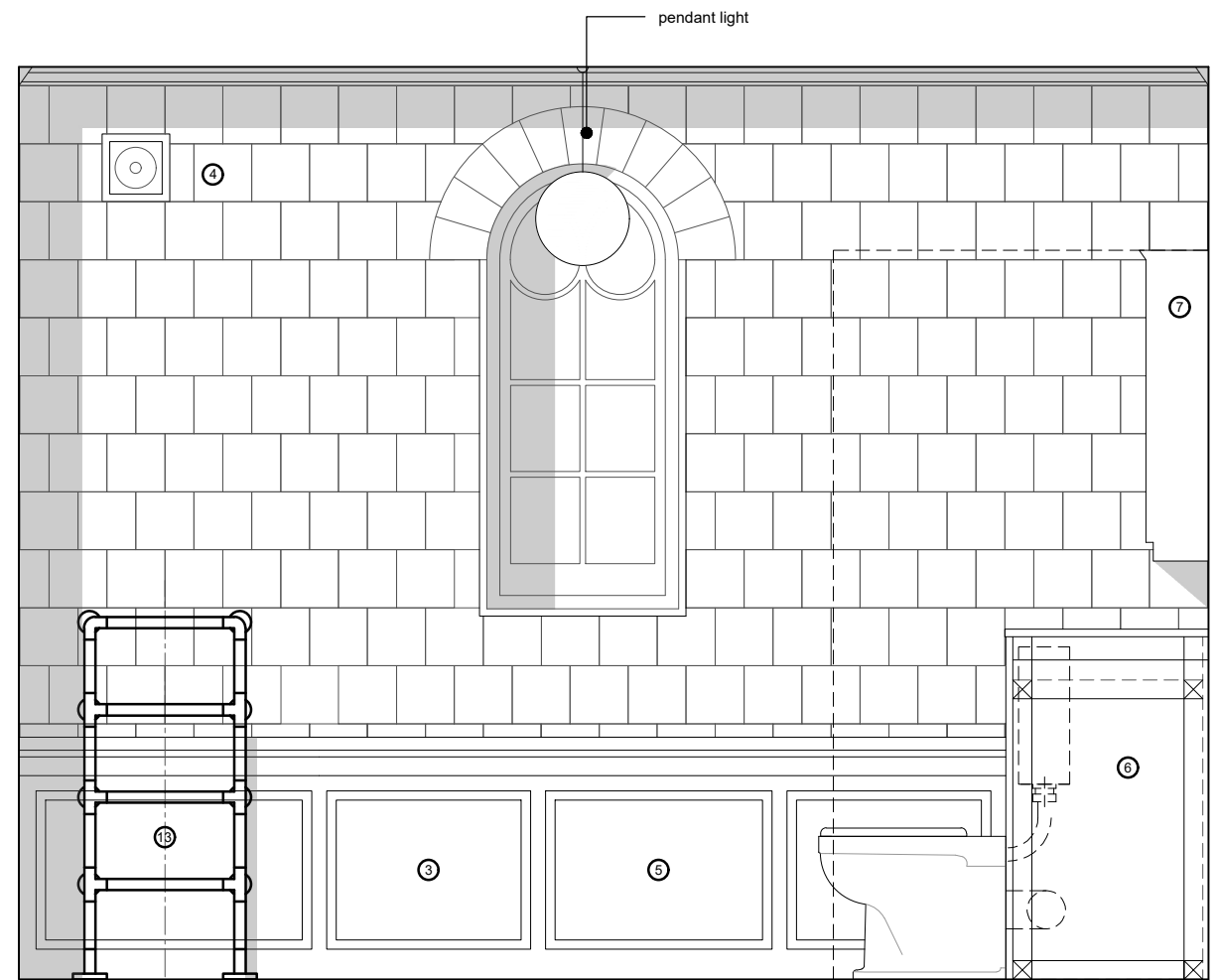


elevation 1

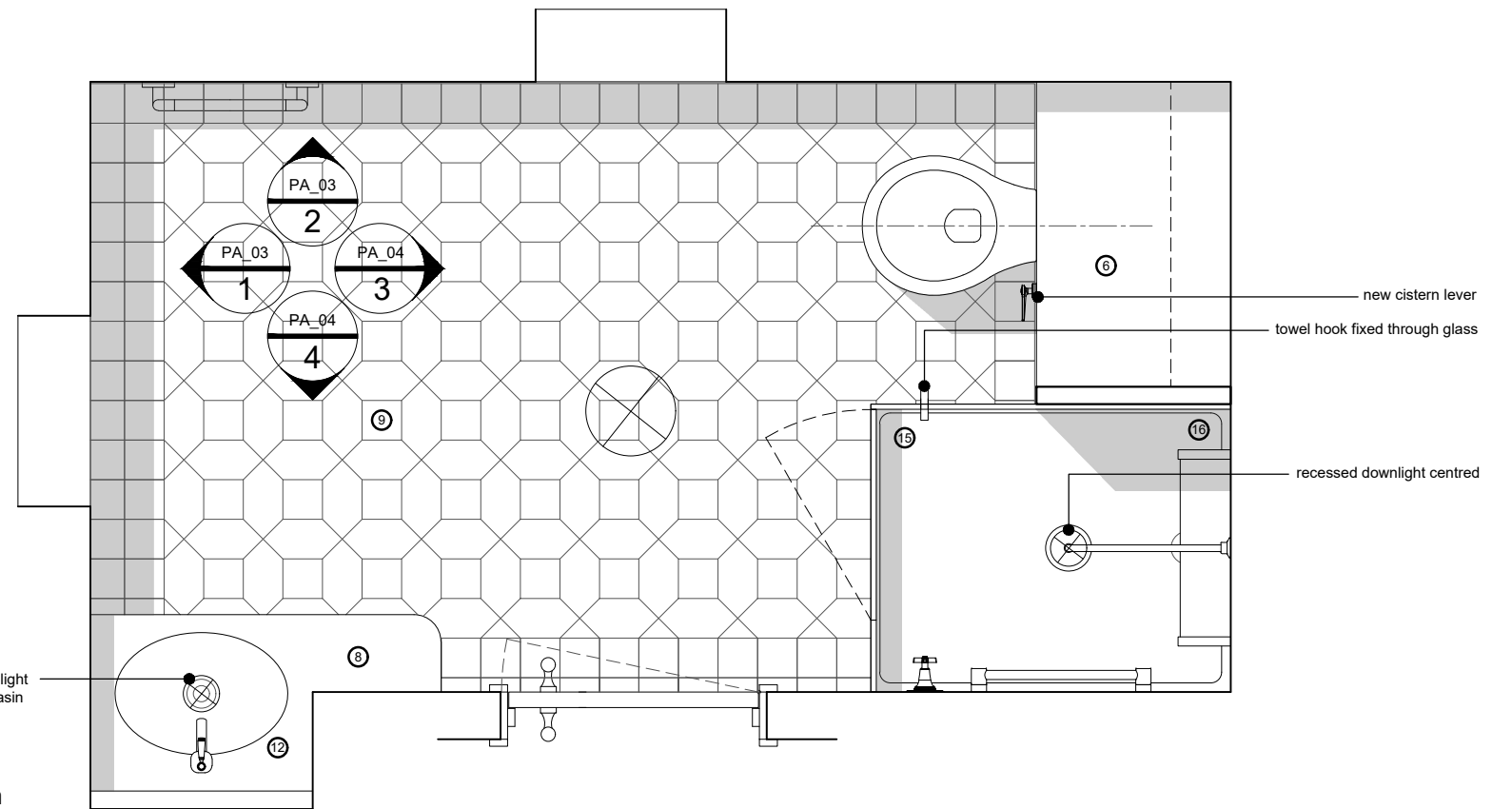
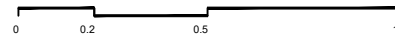


elevation 2

Key

- ① white glazed tile - retained and repaired
- ② niche with basin and cupboards
- ③ extend timber wainscoting to match existing
- ④ new mechanical extract
- ⑤ refinish lacquered timber wainscoting
- ⑥ retain existing WC and cistern cabinet
- ⑦ retain mirror-fronted cabinet
- ⑧ reuse and adapt marble top and basin
- ⑨ extend floor tiles to match existing
- ⑩ new vanity unit cupboard
- ⑪ new mirrored cupboard
- ⑫ new taps and shower fittings
- ⑬ new heated towel rail
- ⑭ flush/low-profile shower tray
- ⑮ glass shower enclosure
- ⑯ back-painted glass wall lining

Proposed Bathroom Plan and Elevations - Sheet 1  
1:10 @A1 / 1:20 @A3



bathroom plan