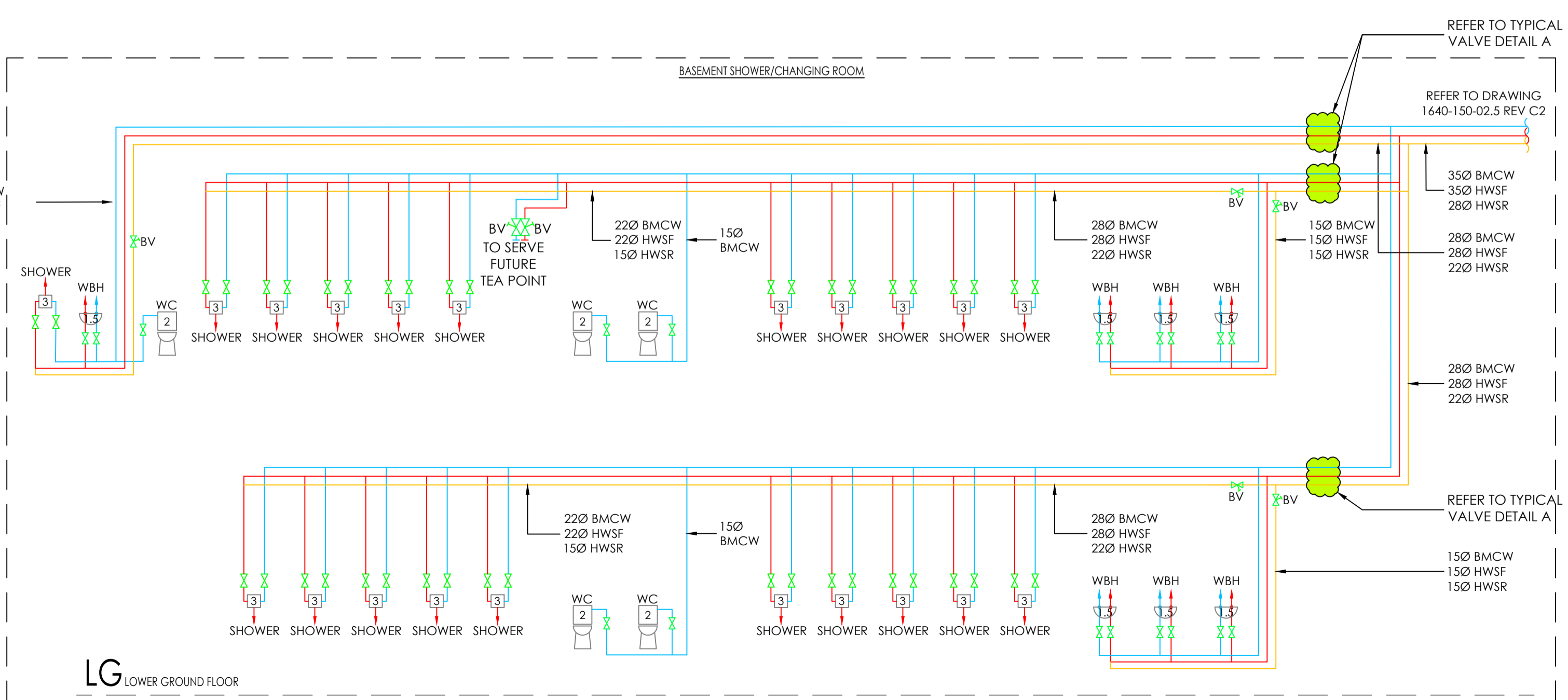
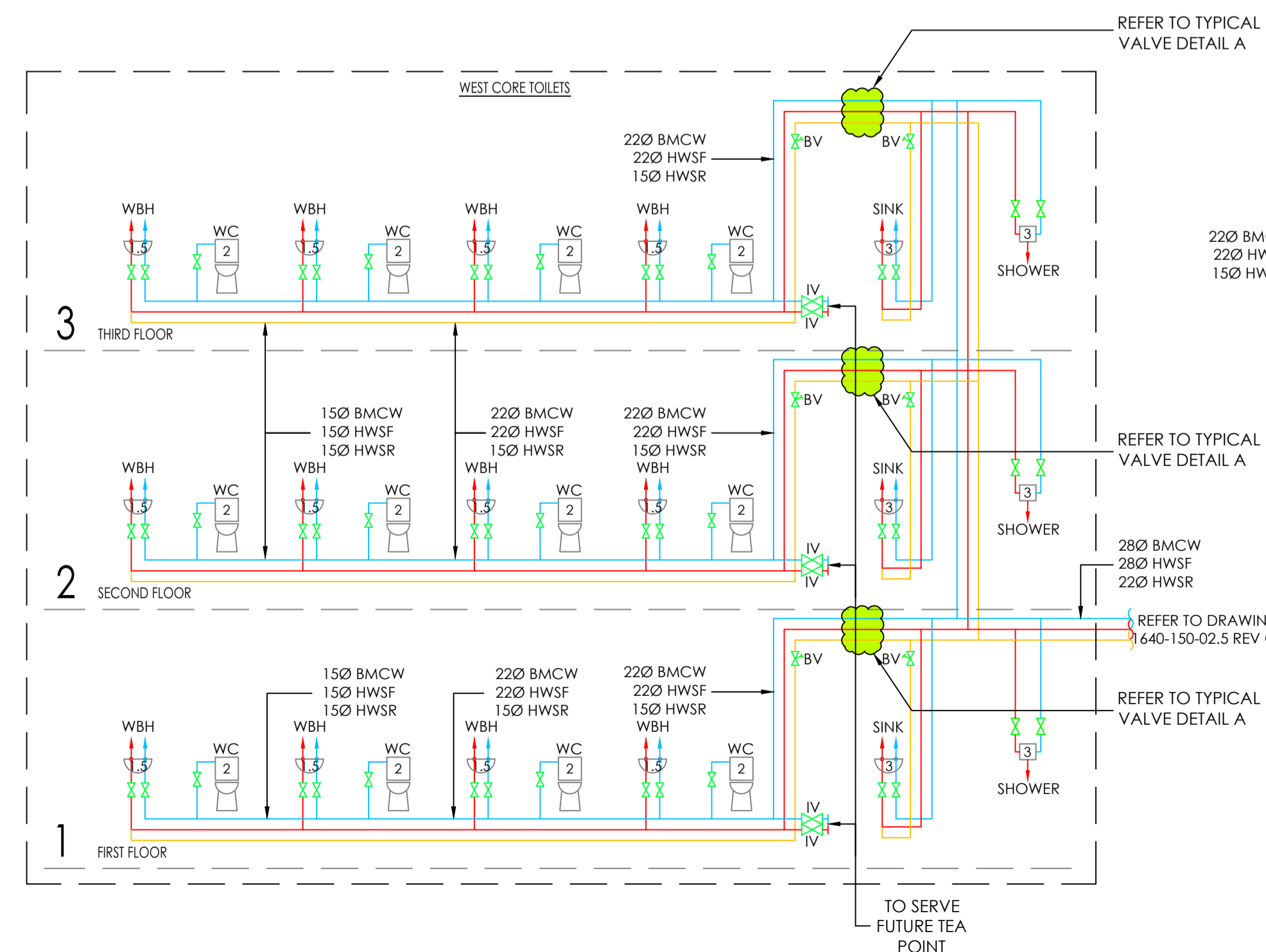
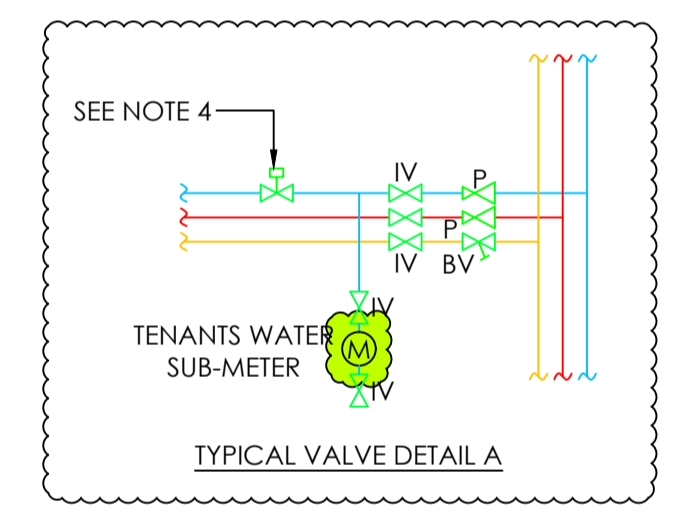
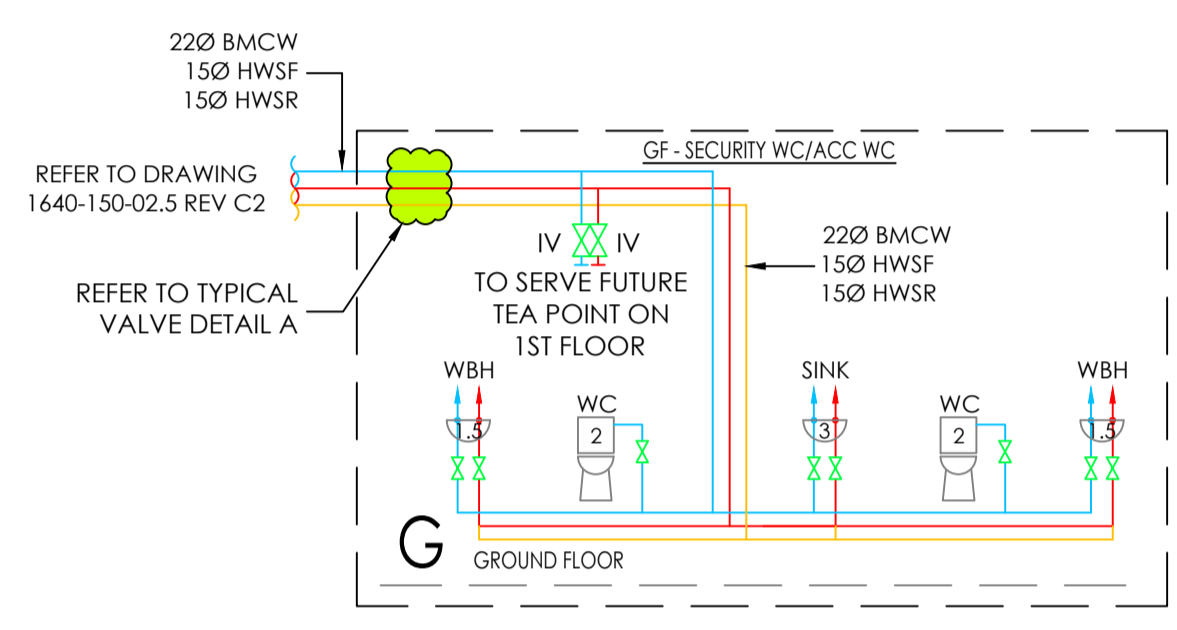


- KEY**
- PUMP
 - DOUBLE CHECK VALVE
 - EXPANSION VESSEL
 - SOLENOID VALVE CONTROL
 - BALANCING VALVE
 - PRESSURE REDUCING VALVE
- BMCW = BOOSTED MAINS COLD WATER
 BDW = BOOSTED DRINKING WATER
 HWSF = HOT WATER SERVICE FLOW
 HWSR = HOT WATER SERVICE RETURN
 NC = NORMALLY CLOSED
 NO = NORMALLY OPEN
- NOTES:**
- ANTI-SHOCK/ANTI-VACUUM VALVES TO BE FITTED TO THE TOP OF EACH MAIN RISER PIPE
 - A BREEAM COMPLIANCE WATER MONITOR - LEAK DETECTION SYSTEM TO BE PROVIDED. REFER TO SPECIFICATION FOR DETAILS.
 - WATER SUB-METER TO BE INSTALLED ON EACH TENANTS CONNECTION AS SHOWN.
 - WATER SUPPLY SHUT-OFF VALVES TO BE PROVIDED ON EACH TOILET BMCW SUPPLY LINKED TO INFRA RED BMCW SUPPLY DETECTOR IN CEILING. REFER SPECIFICATION FOR DETAILS.
 - ALL ROOF TERRACE BIB TAPS IN LOCKABLE BOXES TO BE COMPLETE WITH HOLE UNION TAP, DOUBLE CHECK VALVE, PRESSURE REDUCING VALVE AND SERVICE VALVE C/W PIPE INTERRUPTER AND HOSE UNION CONNECTOR AT THE TAP.



C5	CONSTRUCTION ISSUE - METER POSITION HIGHLIGHTED	PTK	AUG 2020
C4	CONSTRUCTION ISSUE - NOTES ADDED TO ALIGN WITH SPECIFICATION	PTK	JULY 2020
C3	CONSTRUCTION ISSUE - VALVE LOCATIONS MADE CLEAR	PTK	NOV 2019
C2	CONSTRUCTION ISSUE	PTK	JAN 2019
C1	CONSTRUCTION ISSUE	PTK	DEC 2018
T3	TENDER ISSUE - AMENDED TO SUIT NEW ARCHITECTS LAYOUTS	PTK	JULY 2018
T2	STAGE 4 DESIGN STATUS ISSUED FOR STAGE 2 TENDER	PTK	APR 2018
T1	TENDER ISSUE	PTK	JAN 2018

Revisions

Revisions	Description	Ref	Eng	Date
C5	CONSTRUCTION ISSUE - METER POSITION HIGHLIGHTED	PTK	AUG 2020	
C4	CONSTRUCTION ISSUE - NOTES ADDED TO ALIGN WITH SPECIFICATION	PTK	JULY 2020	
C3	CONSTRUCTION ISSUE - VALVE LOCATIONS MADE CLEAR	PTK	NOV 2019	
C2	CONSTRUCTION ISSUE	PTK	JAN 2019	
C1	CONSTRUCTION ISSUE	PTK	DEC 2018	
T3	TENDER ISSUE - AMENDED TO SUIT NEW ARCHITECTS LAYOUTS	PTK	JULY 2018	
T2	STAGE 4 DESIGN STATUS ISSUED FOR STAGE 2 TENDER	PTK	APR 2018	
T1	TENDER ISSUE	PTK	JAN 2018	

Client LAZARI INVESTMENTS LIMITED

Project Title STEPHENSON HOUSE LONDON

Drawing Title WATER SERVICES SCHEMATIC - OFFICE AREA SHEET 1 OF 2

In Association with MARKS BARFIELD

Drawn by TT **Scales** NTS
Checked by PK **(work to figured dimensions)**
 Date: JAN 2018

DRG No. 1640-150-02A **Rev. C5**



UNIT 5 HOWARTH COURT, GATEWAY CRESCENT, OLDHAM BROADWAY BUSINESS PARK, CHADDERTON, OL9 9XB
 Tel: 0161 681 7070
 Email: mail@glpartnership.co.uk