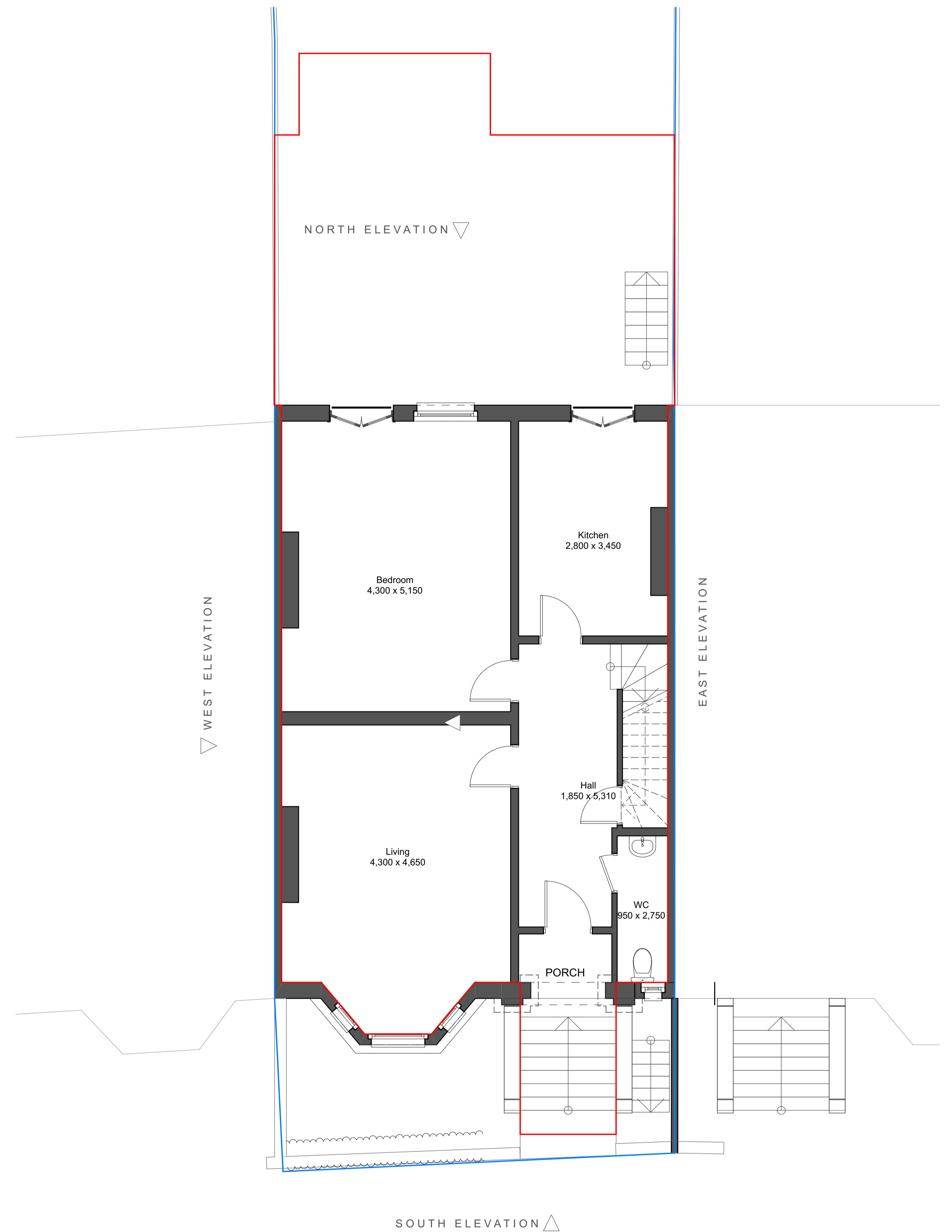


EXISTING LOWER 1:50



EXISTING GROUND 1:50

Total of 7 cycle storage spaces  
 Communal bin storage;  
 120 litres of bin, box or sack volume for general waste or 'refuse' (4 x 120 = 480 litres)  
 140 litres of mixed dry recycling (4 x 140 = 560 litres)  
 1 no. 660 litre eurobin for recycling and 1 no. 660 litre eurobin for refuse are provided in the front area

