

NOTES

MATERIALS KEY

- 1 RED FACING BRICKWORK
2 PAINTED TIMBER BOARDING
3 TIMBER COLUMNS
4 LEAD
5 METAL FRAME DOUBLE GLAZED WINDOW/ DOOR

LH	FOR PLANNING	22/01/2022	PO
CHECK	REVISION NOTES	DATE	REV

28 REDINGTON ROAD, LONDON NW3 7RB

PROPOSED
SOUTH-WEST ELEVATION

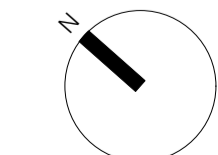
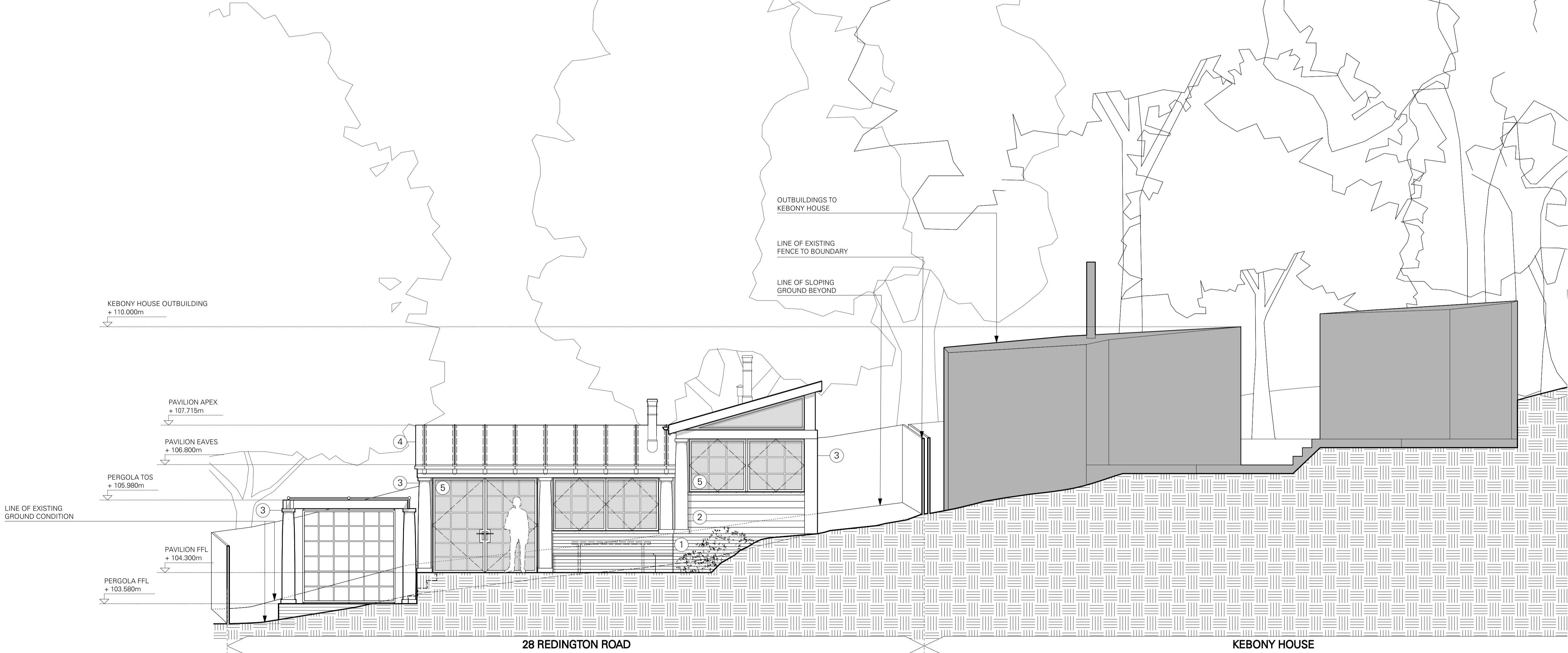
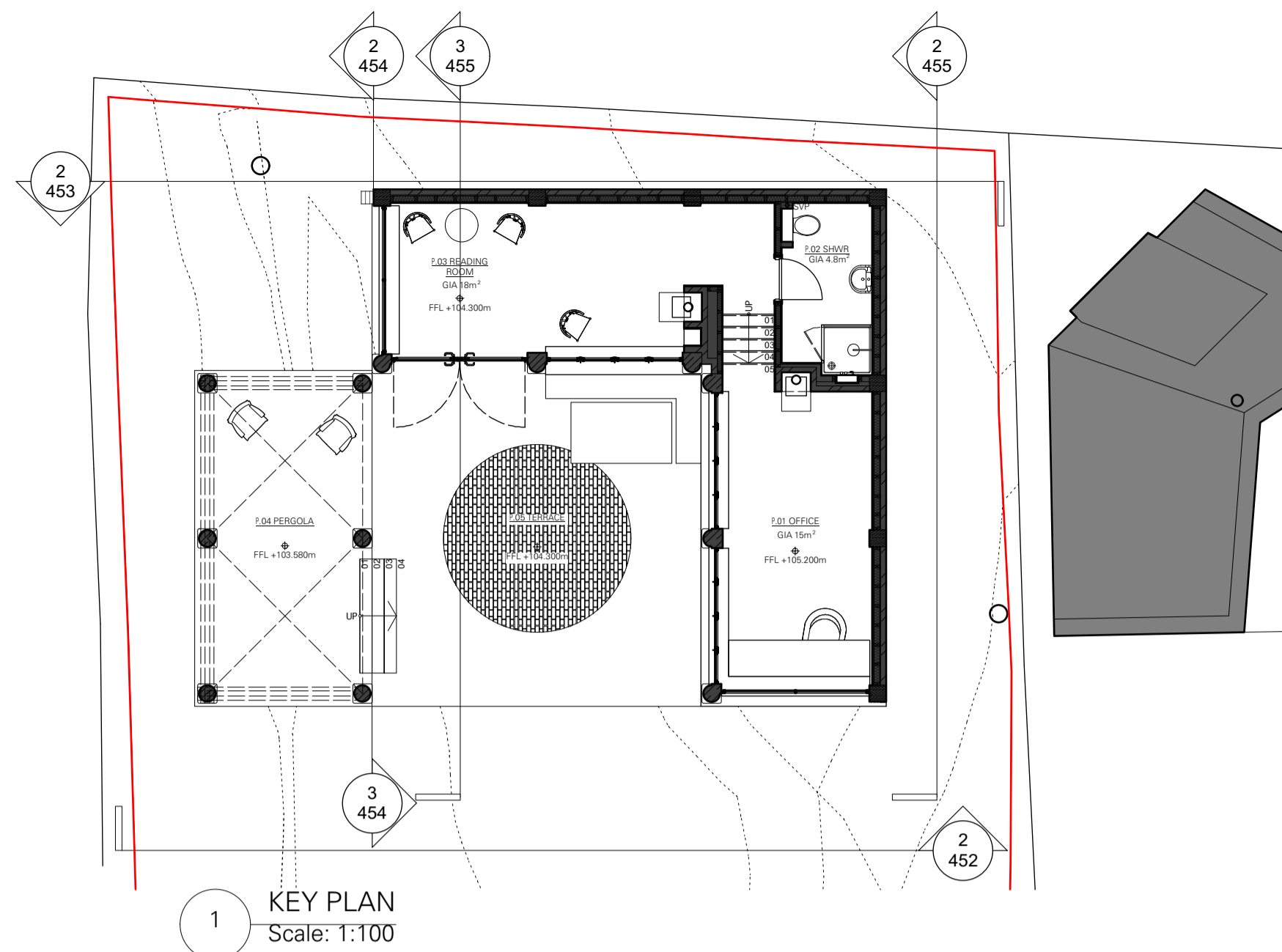
FOR PLANNING

DRAWING STATUS

350	1:50	452	PO
JOB NO.	SCALE (AS SHOWN)	DRAWING NO.	REV

TC
A

Thomas Croft Architects
Studio 117
Great Western Studios
65 Alfred Road
London, W2 5EU
United Kingdom
+44 (0)20 8962 0066
email@thomascroft.com
www.thomascroft.com



SCALE 1:50 @ A1
0 1 2 3 4 5