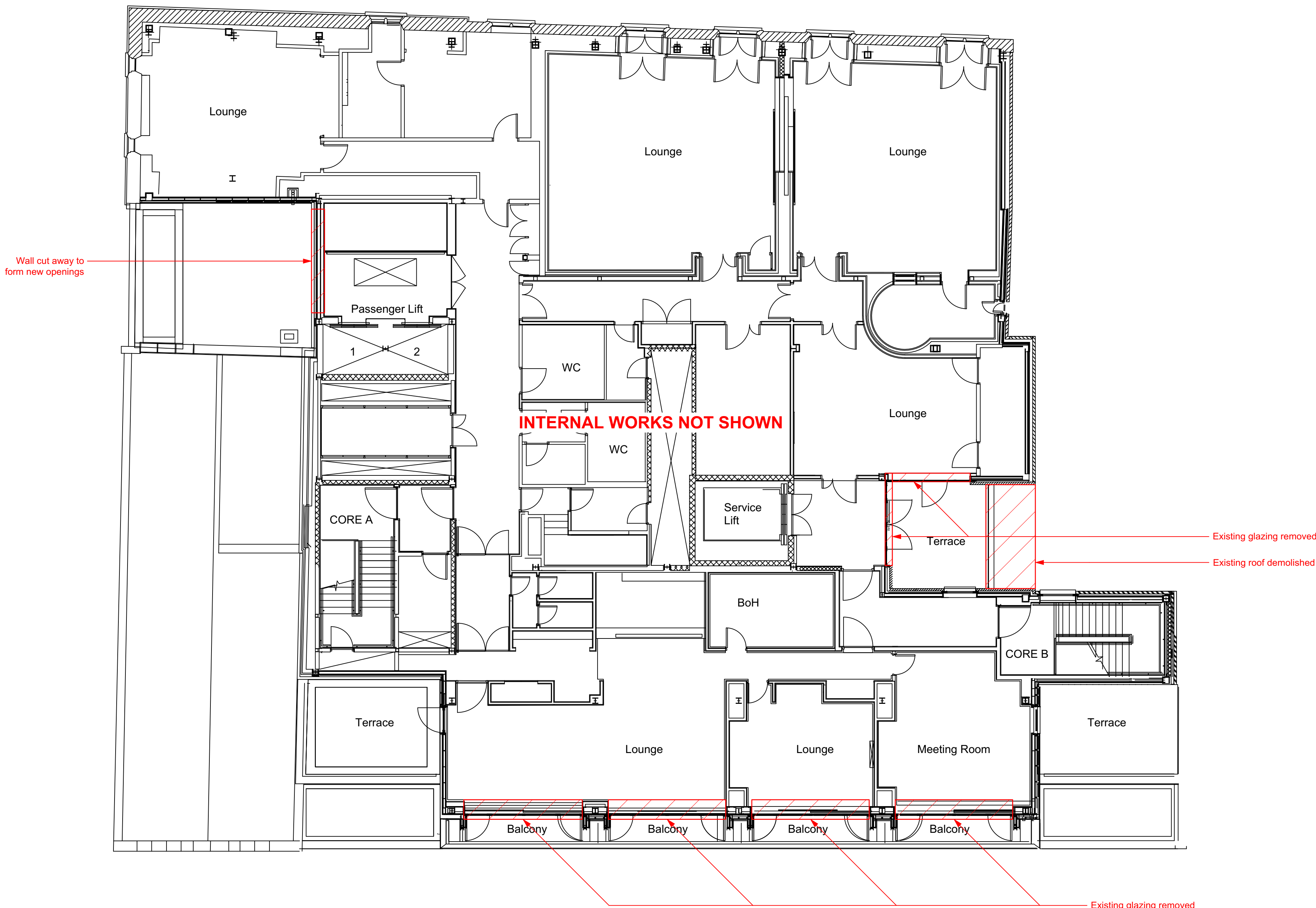


Short's Gardens

Endell Street



Betterton Street

Fourth Floor Plan - Demolition  
Scale: 1:100



GENERAL NOTES.

© Buckley Gray Yeoman Limited

All dimensions to be checked on site prior to commencement of any works, and/or preparation of any shop drawings.

Sizes of and dimensions to any structural elements are indicative only. See structural engineers drawings for actual sizes / dimensions.

Sizes of and dimensions to any service elements are indicative only. See service engineers drawings for actual sizes and dimensions.

This drawing to be read in conjunction with all other Architect's drawings, specifications and other Consultants' information.

All proprietary systems shown on this drawing are to be installed strictly in accordance with the Manufacturers/Suppliers recommended details.

Any discrepancies between information shown on this drawing and any other contract information or manufacturers/suppliers recommendations is to be brought to the attention of the Architect

DO NOT SCALE FROM THIS DRAWING.

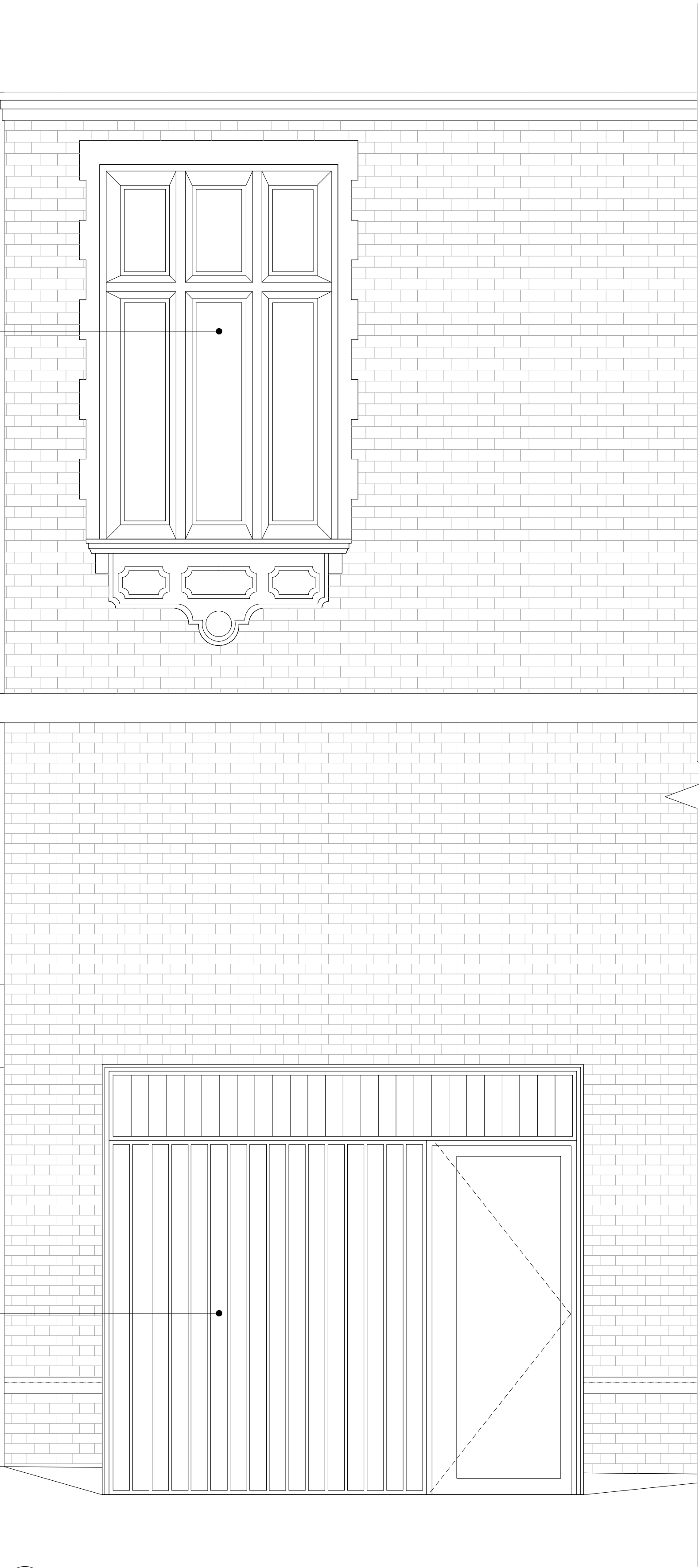
NOTES.

PL02 04/02/22	Planning Amendments	WQ
PL01 20/10/21	Planning Submission	WQ
REV. DATE	NOTE	DRAWN

<b>BGY</b> BUCKLEY GRAY YEOMAN + 44 20 7033 9913 BGY.CO.UK		
CLIENT PATRIZIA		
PROJECT 24 Endell Street		
DRAWING Fourth Floor Plan Demolition		
SCALE 1:100 @ A1 (1:200 @ A3)	DATE Oct. 2021	
STATUS PLANNING	APPROVED RP	
DWG No. 1183_PL-DM-04	REVISION PL02	

Existing windows retained and made good

New coloured metal exit gate to service yard with designated cyclist / pedestrian 'bypass' door. Signage, lighting, intercom panel and CCTV all to be integrated at entrance.



01 Short's Gardens Cyclist Entrance / Service Yard Exit Bay Study  
Scale: 1:25

Existing windows retained and made good

Existing windows retained and made good

Tapered reconstituted stone frame to window

Thin metal mullion and transom

Tapered reconstituted stone mullion

Fixed glazing

Reconstituted stone sill to window

02 Short's Gardens Proposed Window Bay Study  
Scale: 1:25

#### GENERAL NOTES.

© Buckley Gray Yeoman Limited

All dimensions to be checked on site prior to commencement of any works, and/or preparation of any shop drawings.

Sizes of and dimensions to any structural elements are indicative only. See structural engineers drawings for actual sizes / dimensions.

Sizes of and dimensions to any service elements are indicative only. See service engineers drawings for actual sizes and dimensions.

This drawing to be read in conjunction with all other Architect's drawings, specifications and other Consultants' information.

All proprietary systems shown on this drawing are to be installed strictly in accordance with the Manufacturers/Suppliers recommended details.

Any discrepancies between information shown on this drawing and any other contract information or manufacturers/suppliers recommendations is to be brought to the attention of the Architect

DO NOT SCALE FROM THIS DRAWING.

#### NOTES.

#### Elevation Key



PL02 04/02/22	Planning Amendments	WQ
PL01 20/10/21	Planning Submission	WQ
REV. DATE	NOTE	DRAWN

# BGY

BUCKLEY GRAY YEOMAN  
+ 44 20 7033 9913  
BGY.CO.UK

CLIENT  
**PATRIZIA**

PROJECT  
**24 Endell Street**

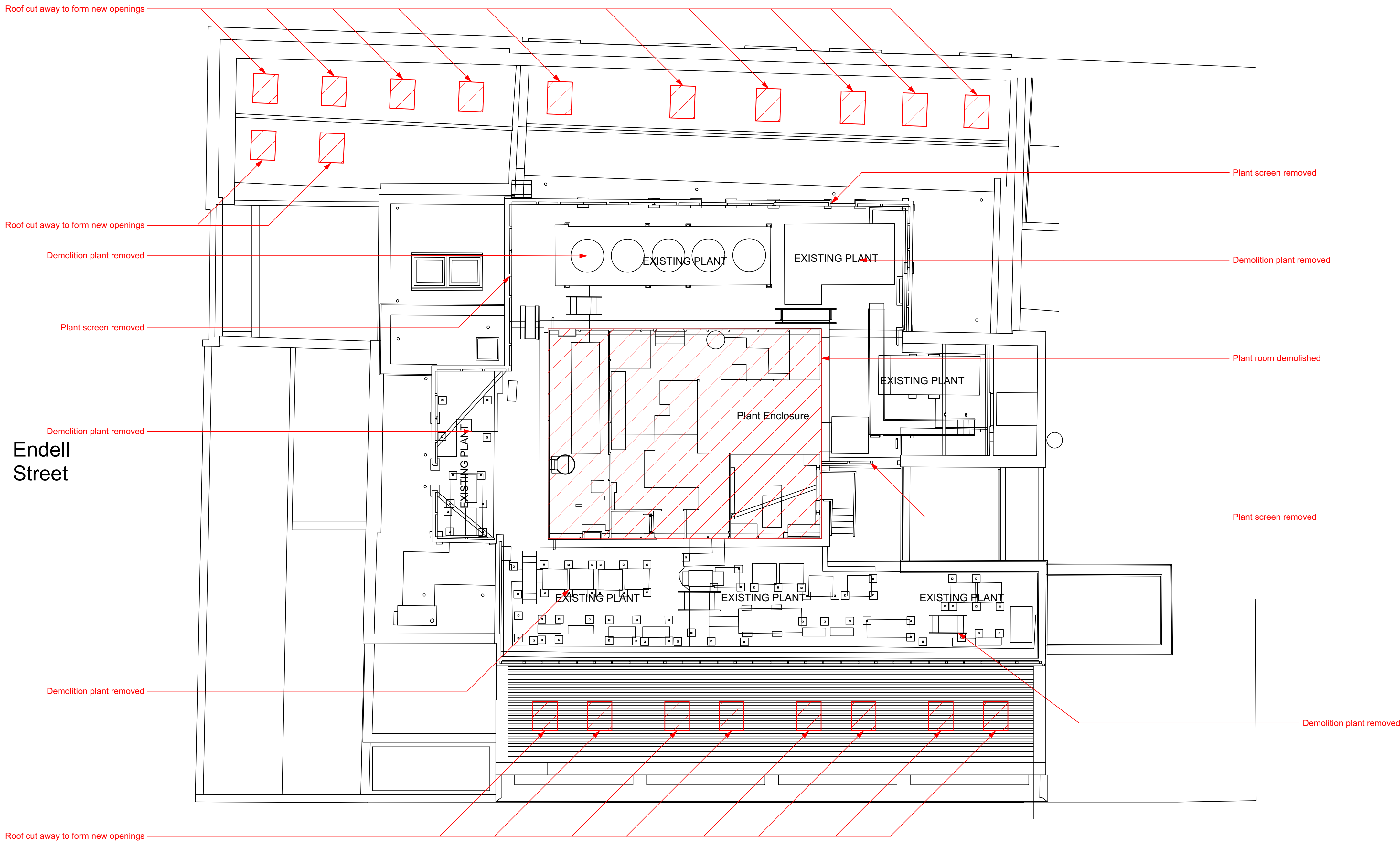
DRAWING  
**Bay Study  
Proposed North Elevation**

SCALE	DATE
<b>1:25 @ A1 (1:50 @ A3)</b>	<b>Oct. 2021</b>

STATUS	APPROVED
<b>PLANNING</b>	<b>RP</b>

DWG No.	REVISION
<b>1183_FA-01</b>	<b>PL02</b>

Short's Gardens



Endell Street

Betterton Street

GENERAL NOTES.

© Buckley Gray Yeoman Limited

All dimensions to be checked on site prior to commencement of any works, and/or preparation of any shop drawings.

Sizes of and dimensions to any structural elements are indicative only. See structural engineers drawings for actual sizes / dimensions.

Sizes of and dimensions to any service elements are indicative only. See service engineers drawings for actual sizes and dimensions.

This drawing to be read in conjunction with all other Architect's drawings, specifications and other Consultants' information.

All proprietary systems shown on this drawing are to be installed strictly in accordance with the Manufacturers/Suppliers recommended details.

Any discrepancies between information shown on this drawing and any other contract information or manufacturers/suppliers recommendations is to be brought to the attention of the Architect

DO NOT SCALE FROM THIS DRAWING.

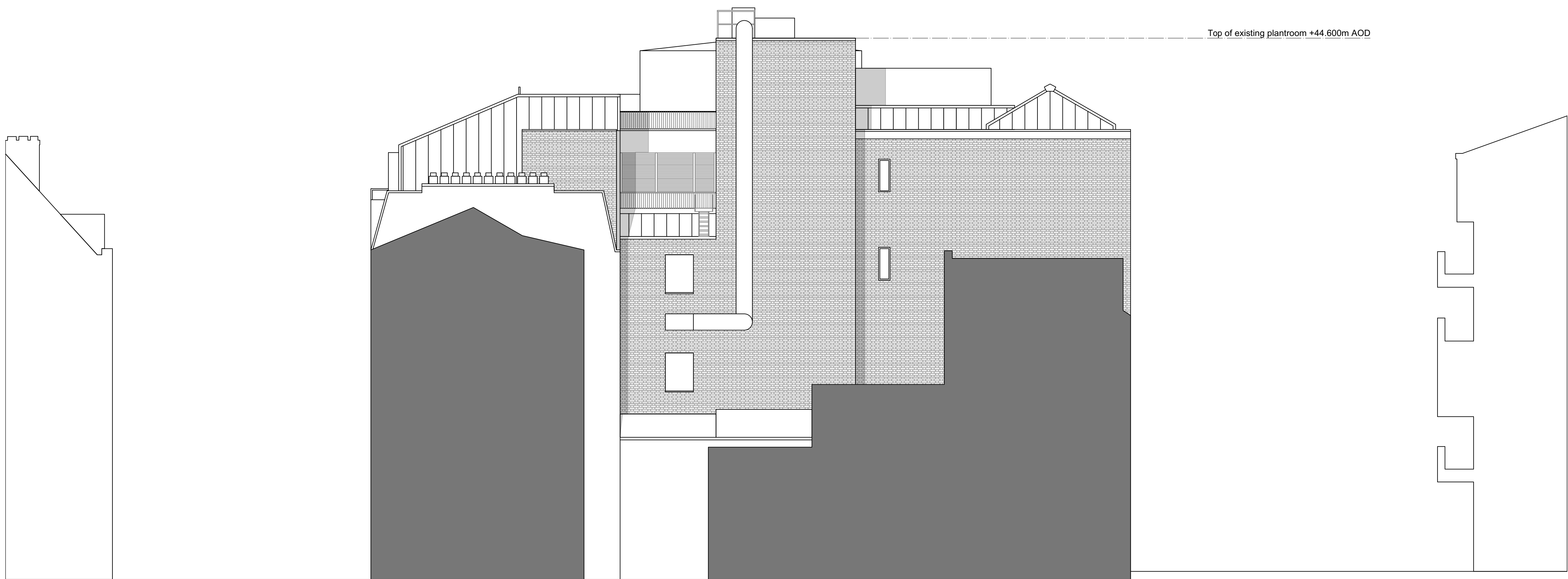
NOTES.

PL02 04/02/22	Planning Amendments	WQ
PL01 20/10/21	Planning Submission	WQ
REV. DATE	NOTE	DRAWN

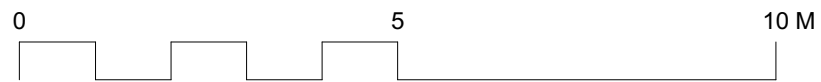
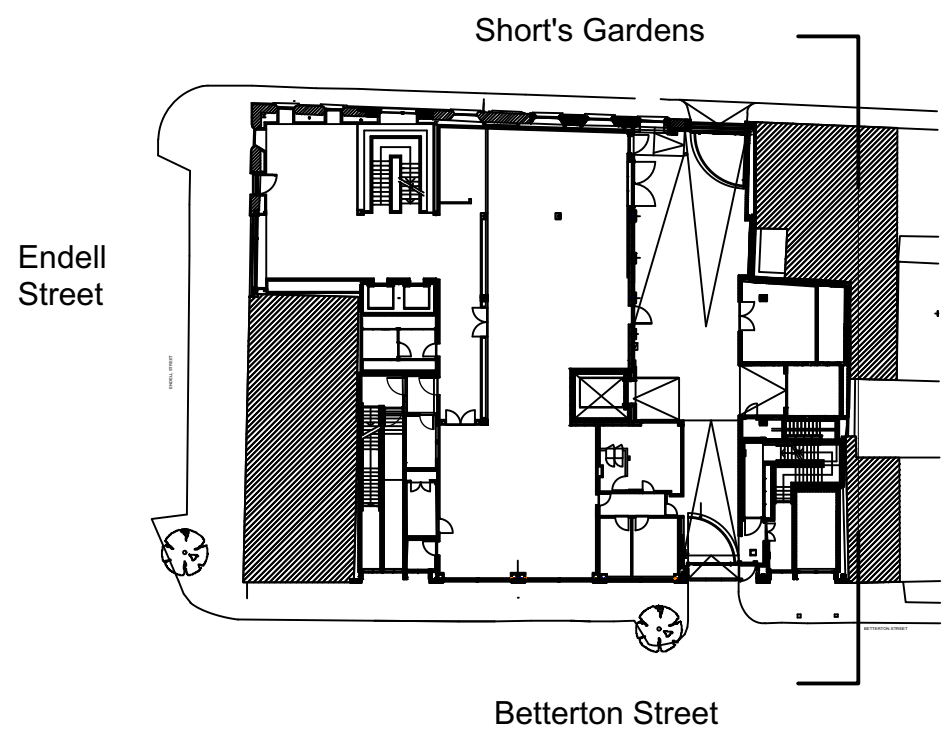
**BGY**  
BUCKLEY GRAY YEOMAN  
+ 44 20 7033 9913  
BGY.CO.UK

CLIENT PATRIZIA	
PROJECT 24 Endell Street	
DRAWING Fifth Floor Plant / Roof Plan Demolition	
SCALE 1:100 @ A1 (1:200 @ A3)	DATE Oct. 2021
STATUS PLANNING	APPROVED RP
DWG No. 1183_PL-DM-05	REVISION PL02





Existing East Elevation  
Scale: 1:100



GENERAL NOTES.

© Buckley Gray Yeoman Limited

All dimensions to be checked on site prior to commencement of any works, and/or preparation of any shop drawings.

Sizes of and dimensions to any structural elements are indicative only. See structural engineers drawings for actual sizes / dimensions.

Sizes of and dimensions to any service elements are indicative only. See service engineers drawings for actual sizes and dimensions.

This drawing to be read in conjunction with all other Architect's drawings, specifications and other Consultants' information.

All proprietary systems shown on this drawing are to be installed strictly in accordance with the Manufacturers/Suppliers recommended details.

Any discrepancies between information shown on this drawing and any other contract information or manufacturers/suppliers recommendations is to be brought to the attention of the Architect

DO NOT SCALE FROM THIS DRAWING.

NOTES.

PL01	04/02/22	Planning Amendments	WQ
REV.	DATE	NOTE	DRAWN

**BGY**  
BUCKLEY GRAY YEOMAN  
+ 44 20 7033 9913  
BGY.CO.UK

CLIENT  
**PATRIZIA**

PROJECT  
**24 Endell Street**

DRAWING  
**Existing East Elevation**

SCALE	DATE
<b>1:100 @ A1 (1:200 @ A3)</b>	<b>Feb. 2022</b>

STATUS	APPROVED
<b>PLANNING</b>	<b>RP</b>

DWG No.	REVISION
<b>1183_PL-EE-04</b>	<b>PL01</b>



Fourth Floor Plan - Proposed  
Scale: 1:100



GENERAL NOTES.

© Buckley Gray Yeoman Limited

All dimensions to be checked on site prior to commencement of any works, and/or preparation of any shop drawings.

Sizes of and dimensions to any structural elements are indicative only. See structural engineers drawings for actual sizes / dimensions.

Sizes of and dimensions to any service elements are indicative only. See service engineers drawings for actual sizes and dimensions.

This drawing to be read in conjunction with all other Architect's drawings, specifications and other Consultants' information.

All proprietary systems shown on this drawing are to be installed strictly in accordance with the Manufacturers/Suppliers recommended details.

Any discrepancies between information shown on this drawing and any other contract information or manufacturers/suppliers recommendations is to be brought to the attention of the Architect

DO NOT SCALE FROM THIS DRAWING.

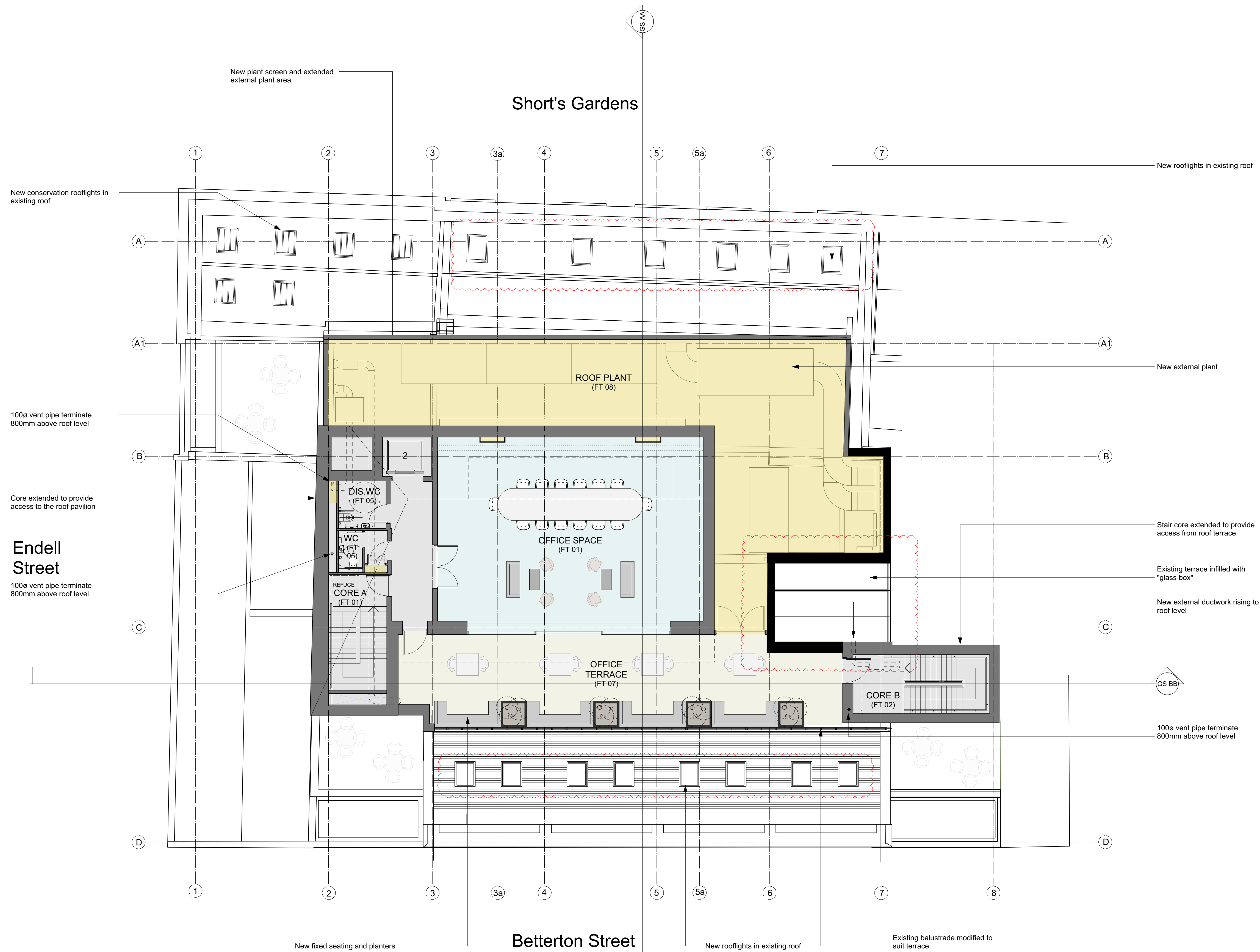
NOTES.

Key			
	Office Reception		Service Yard
	Flexible Ancillary Space to Reception		Plant/Riser
	Office		Out of Scope
	Studio Reception		Services / EOJ
	Studio		Terrace
	Existing Retained Wall		New Wall

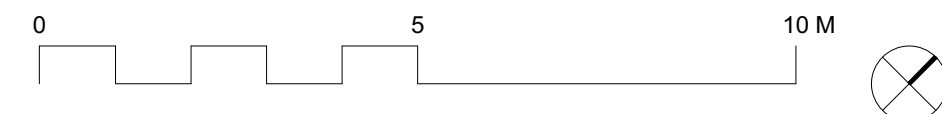
PL02 04/02/22	Planning Amendments	WQ
PL01 20/10/21	Planning Submission	WQ
REV. DATE	NOTE	DRAWN

**BGY**  
BUCKLEY GRAY YEOMAN  
+ 44 20 7033 9913  
BGY.CO.UK

CLIENT	<b>PATRIZIA</b>	
PROJECT	<b>24 Endell Street</b>	
DRAWING	<b>Fourth Floor Plan Proposed</b>	
SCALE	DATE	
<b>1:100 @ A1</b>	<b>Oct. 2021</b>	
<b>(1:200 @ A3)</b>		
STATUS	APPROVED	
<b>PLANNING</b>	<b>RP</b>	
DWG No.	REVISION	
<b>1183_PL-GA-04</b>	<b>PL02</b>	



Fifth Floor Plan - Proposed  
Scale: 1:100



GENERAL NOTES.

© Buckley Gray Yeoman Limited

All dimensions to be checked on site prior to commencement of any works, and/or preparation of any shop drawings.

Sizes of and dimensions to any structural elements are indicative only. See structural engineers drawings for actual sizes / dimensions.

Sizes of and dimensions to any service elements are indicative only. See service engineers drawings for actual sizes and dimensions.

This drawing to be read in conjunction with all other Architect's drawings, specifications and other Consultants' information.

All proprietary systems shown on this drawing are to be installed strictly in accordance with the Manufacturers/Suppliers recommended details.

Any discrepancies between information shown on this drawing and any other contract information or manufacturers/suppliers recommendations is to be brought to the attention of the Architect

DO NOT SCALE FROM THIS DRAWING.

NOTES.

Key			
	Office Reception		Service Yard
	Flexible Ancillary Space to Reception		Plant/Riser
	Office		Out of Scope
	Studio Reception		Services / EOJ
	Studio		Terrace
	Existing Retained Wall		New Wall

PL02 04/02/22	Planning Amendments	WQ
PL01 20/10/21	Planning Submission	WQ
REV. DATE	NOTE	DRAWN

**BGY**  
BUCKLEY GRAY YEOMAN  
+ 44 20 7033 9913  
BGY.CO.UK

CLIENT	<b>PATRIZIA</b>	
PROJECT	<b>24 Endell Street</b>	
DRAWING	<b>Fifth Level Plan Proposed</b>	
SCALE	DATE	
<b>1:100 @ A1</b> <b>(1:200 @ A3)</b>	<b>Oct. 2021</b>	
STATUS	APPROVED	
<b>PLANNING</b>	<b>RP</b>	
DWG No.	REVISION	
<b>1183_PL-GA-05</b>	<b>PL02</b>	



GENERAL NOTES.

© Buckley Gray Yeoman Limited

All dimensions to be checked on site prior to commencement of any works, and/or preparation of any shop drawings.

Sizes of and dimensions to any structural elements are indicative only. See structural engineers drawings for actual sizes / dimensions.

Sizes of and dimensions to any service elements are indicative only. See service engineers drawings for actual sizes and dimensions.

This drawing to be read in conjunction with all other Architect's drawings, specifications and other Consultants' information.

All proprietary systems shown on this drawing are to be installed strictly in accordance with the Manufacturers/Suppliers recommended details.

Any discrepancies between information shown on this drawing and any other contract information or manufacturers/suppliers recommendations is to be brought to the attention of the Architect

DO NOT SCALE FROM THIS DRAWING.

NOTES.

Key	
	Office Reception
	Flexible Ancillary Space to Reception
	Office
	Studio Reception
	Studio
	Existing Retained Wall
	Service Yard
	Plant/Riser
	Out of Scope
	Services / EOJ
	Terrace
	New Wall

PL02 04/02/22	Planning Amendments	WQ
PL01 20/10/21	Planning Submission	WQ
REV. DATE	NOTE	DRAWN

**BGY**  
BUCKLEY GRAY YEOMAN  
+ 44 20 7033 9913  
BGY.CO.UK

CLIENT  
**PATRIZIA**

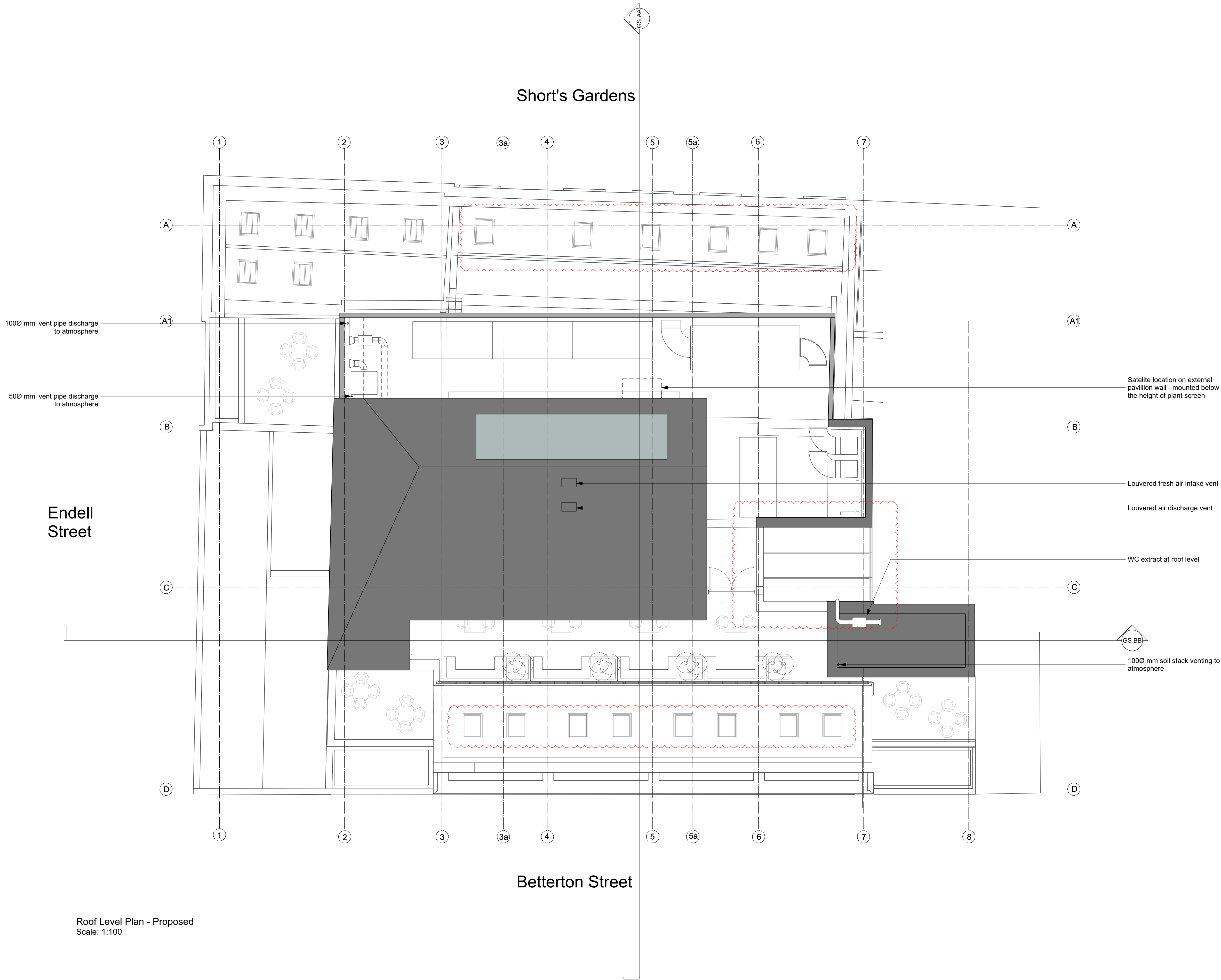
PROJECT  
**24 Endell Street**

DRAWING  
**Roof Level Plan Proposed**

SCALE <b>1:100 @ A1 (1:200 @ A3)</b>	DATE <b>Oct. 2021</b>
---	--------------------------

STATUS <b>PLANNING</b>	APPROVED <b>RP</b>
---------------------------	-----------------------

DWG No. <b>1183_PL-GA-RF</b>	REVISION <b>PL02</b>
---------------------------------	-------------------------



Roof Level Plan - Proposed  
Scale: 1:100



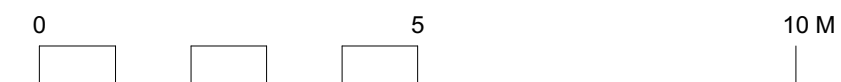
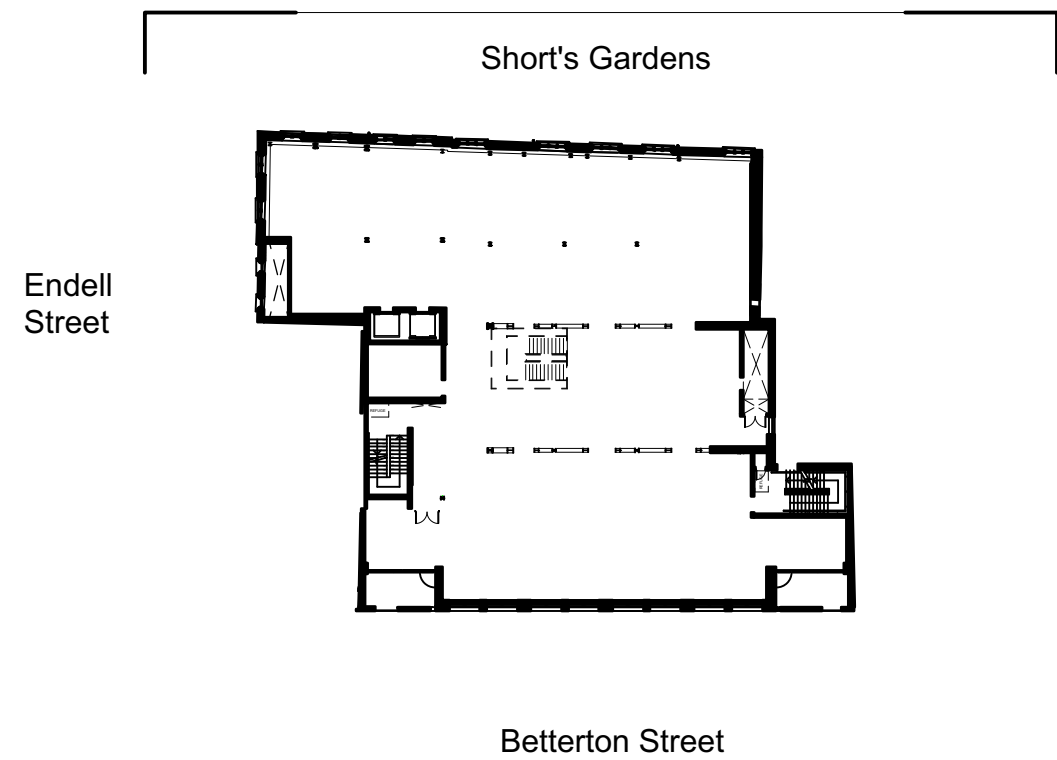


56 Short's Gardens

24 Endell Street

Endell Street

Proposed North Elevation  
Scale: 1:100



GENERAL NOTES.

© Buckley Gray Yeoman Limited

All dimensions to be checked on site prior to commencement of any works, and/or preparation of any shop drawings.

Sizes of and dimensions to any structural elements are indicative only. See structural engineers drawings for actual sizes / dimensions.

Sizes of and dimensions to any service elements are indicative only. See service engineers drawings for actual sizes and dimensions.

This drawing to be read in conjunction with all other Architect's drawings, specifications and other Consultants' information.

All proprietary systems shown on this drawing are to be installed strictly in accordance with the Manufacturers/Suppliers recommended details.

Any discrepancies between information shown on this drawing and any other contract information or manufacturers/suppliers recommendations is to be brought to the attention of the Architect

DO NOT SCALE FROM THIS DRAWING.

NOTES.

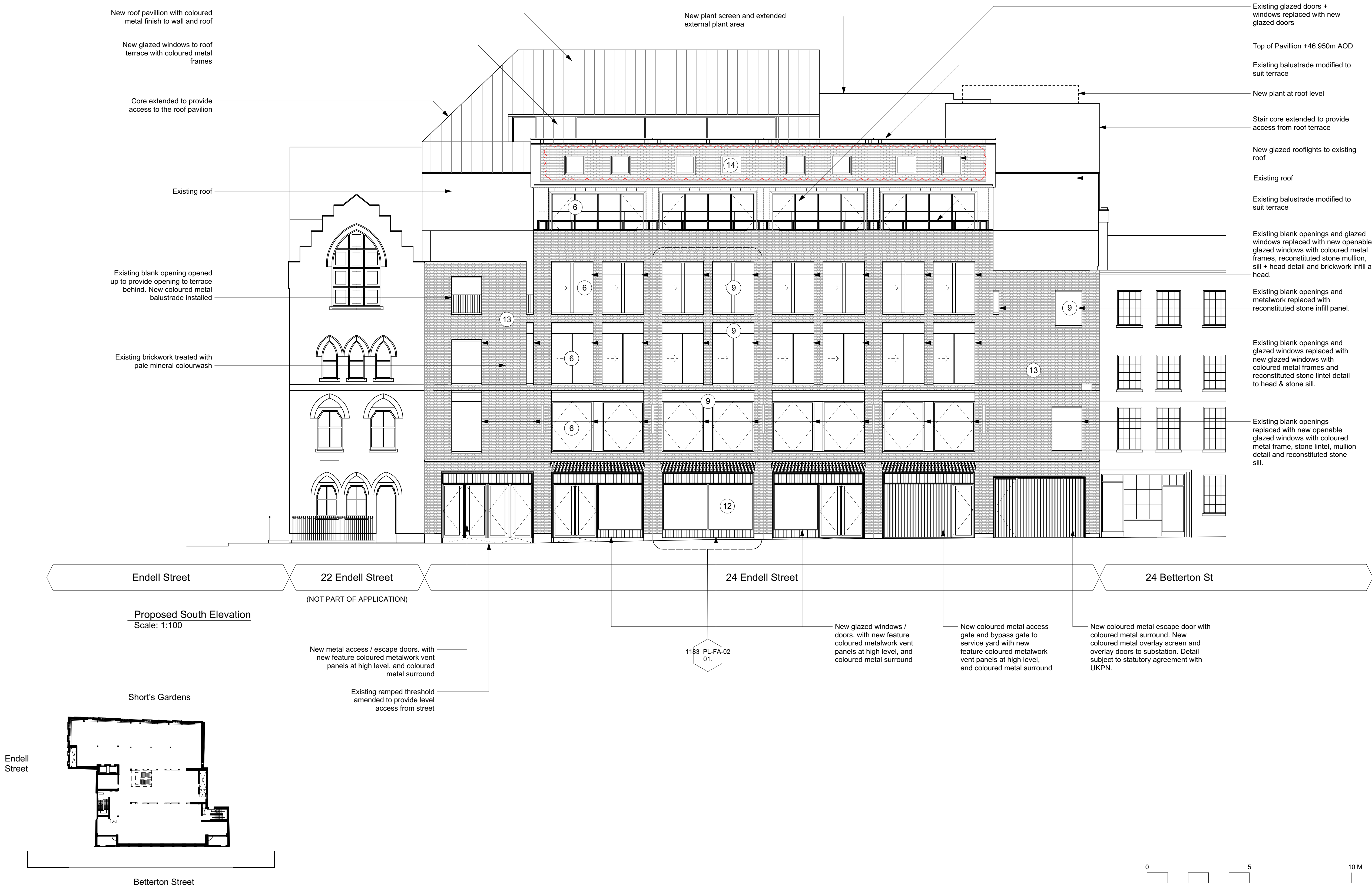
- Material Key**
- 1 Existing brickwork
  - 2 Existing windows with stone surrounds
  - 3 Existing render
  - 4 Existing metal cladding
  - 5 New metal cladding
  - 6 New glazed door/window with metal coloured frame
  - 7 Coloured metal panel
  - 8 Coloured metal gates
  - 9 New reconstituted stone
  - 10 Metal louvered plant screen
  - 11 New glazed conservation rooflights
  - 12 New glazed windows / doors. with new feature coloured metalwork vent panels at high level, and coloured metal surround
  - 13 Existing brickwork treated with pale mineral colourwash
  - 14 New glazed rooflights

PL02 04/02/22	Planning Amendments	WQ
PL01 20/10/21	Planning Submission	WQ
REV. DATE	NOTE	DRAWN

**BGY**  
BUCKLEY GRAY YEOMAN  
+ 44 20 7033 9913  
BGY.CO.UK

CLIENT <b>PATRIZIA</b>	
PROJECT <b>24 Endell Street</b>	
DRAWING <b>Proposed North Elevation</b>	
SCALE <b>1:100 @ A1 (1:200 @ A3)</b>	DATE <b>Oct. 2021</b>
STATUS <b>PLANNING</b>	APPROVED <b>RP</b>
DWG No. <b>1183_PL-GE-01</b>	REVISION <b>PL02</b>





GENERAL NOTES.

© Buckley Gray Yeoman Limited

All dimensions to be checked on site prior to commencement of any works, and/or preparation of any shop drawings.

Sizes of and dimensions to any structural elements are indicative only. See structural engineers drawings for actual sizes / dimensions.

Sizes of and dimensions to any service elements are indicative only. See service engineers drawings for actual sizes and dimensions.

This drawing to be read in conjunction with all other Architect's drawings, specifications and other Consultants' information.

All proprietary systems shown on this drawing are to be installed strictly in accordance with the Manufacturers/Suppliers recommended details.

Any discrepancies between information shown on this drawing and any other contract information or manufacturers/suppliers recommendations is to be brought to the attention of the Architect

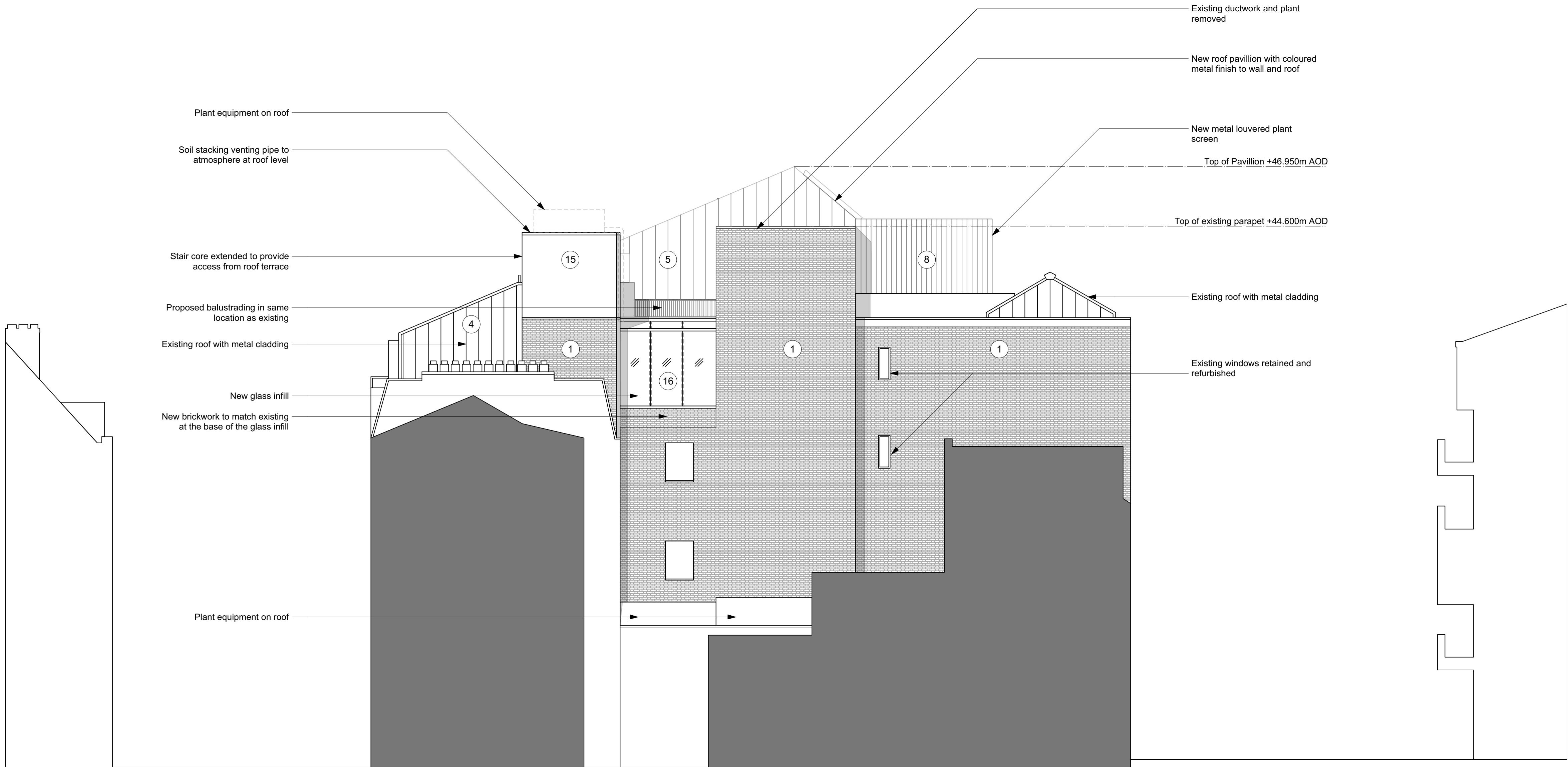
DO NOT SCALE FROM THIS DRAWING.

- NOTES.
- Material Key**
- 1 Existing brickwork
  - 2 Existing windows with stone surrounds
  - 3 Existing render
  - 4 Existing metal cladding
  - 5 New metal cladding
  - 6 New glazed door/window with metal coloured frame
  - 7 Coloured metal panel
  - 8 Coloured metal gates
  - 9 New reconstituted stone
  - 10 Metal louvered plant screen
  - 11 New glazed conservation rooflights
  - 12 New glazed windows / doors, with new feature coloured metalwork vent panels at high level, and coloured metal surround
  - 13 Existing brickwork treated with pale mineral colourwash
  - 14 New glazed rooflights

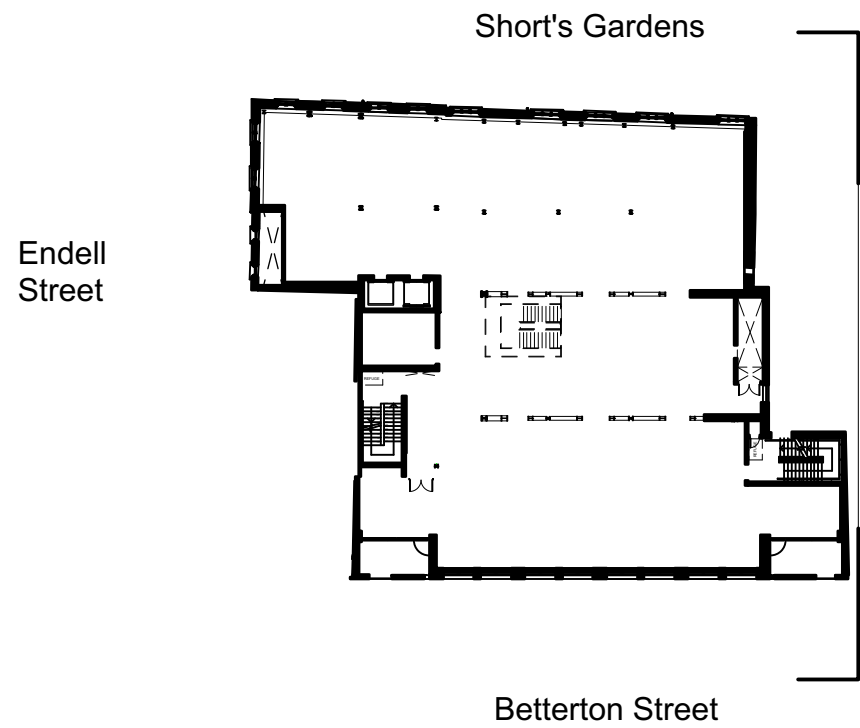
PL02 04/02/22	Planning Amendments	WQ
PL01 20/10/21	Planning Submission	WQ
REV. DATE	NOTE	DRAWN

**BGY**  
BUCKLEY GRAY YEOMAN  
+ 44 20 7033 9913  
BGY.CO.UK

CLIENT <b>PATRIZIA</b>	
PROJECT <b>24 Endell Street</b>	
DRAWING <b>Proposed South Elevation</b>	
SCALE <b>1:100 @ A1 (1:200 @ A3)</b>	DATE <b>Oct. 2021</b>
STATUS <b>PLANNING</b>	APPROVED <b>RP</b>
DWG No. <b>1183_PL-GE-02</b>	REVISION <b>PL02</b>

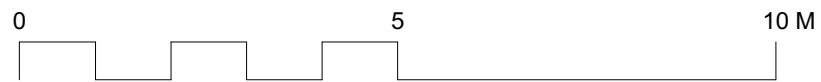


Proposed East Elevation  
Scale: 1:100



24 Endell Street

Betterton St 24 Betterton St 56 Short's Gardens Short's Gardens



GENERAL NOTES.

© Buckley Gray Yeoman Limited

All dimensions to be checked on site prior to commencement of any works, and/or preparation of any shop drawings.

Sizes of and dimensions to any structural elements are indicative only. See structural engineers drawings for actual sizes / dimensions.

Sizes of and dimensions to any service elements are indicative only. See service engineers drawings for actual sizes and dimensions.

This drawing to be read in conjunction with all other Architect's drawings, specifications and other Consultants' information.

All proprietary systems shown on this drawing are to be installed strictly in accordance with the Manufacturers/Suppliers recommended details.

Any discrepancies between information shown on this drawing and any other contract information or manufacturers/suppliers recommendations is to be brought to the attention of the Architect

DO NOT SCALE FROM THIS DRAWING.

- NOTES.
- Material Key**
- 1 Existing brickwork
  - 2 Existing windows with stone surrounds
  - 3 Existing render
  - 4 Existing metal cladding
  - 5 New metal cladding
  - 6 New glazed door/window with metal coloured frame
  - 7 Coloured metal panel
  - 8 Coloured metal gates
  - 9 New reconstituted stone
  - 10 Metal louvered plant screen
  - 11 New glazed conservation rooflights
  - 12 New glazed windows / doors. with new feature coloured metalwork vent panels at high level, and coloured metal surround
  - 15 New rendered extrenal wall
  - 16 New structural glazing

PL01	04/02/22	Planning Amendments	WQ
REV.	DATE	NOTE	DRAWN

**BGY**  
BUCKLEY GRAY YEOMAN  
+ 44 20 7033 9913  
BGY.CO.UK

CLIENT <b>PATRIZIA</b>	
PROJECT <b>24 Endell Street</b>	
DRAWING <b>Proposed East Elevation</b>	
SCALE <b>1:100 @ A1 (1:200 @ A3)</b>	DATE <b>Oct. 2021</b>
STATUS <b>PLANNING</b>	APPROVED <b>RP</b>
DWG No. <b>1183_PL-GE-04</b>	REVISION <b>PL01</b>