

Planning conditions

RAGLAN HOUSE,
1 RAGLAN STREET, LONDON, NW5 3DB

Gunn job No. 692A
Client: Mead Building Contractors

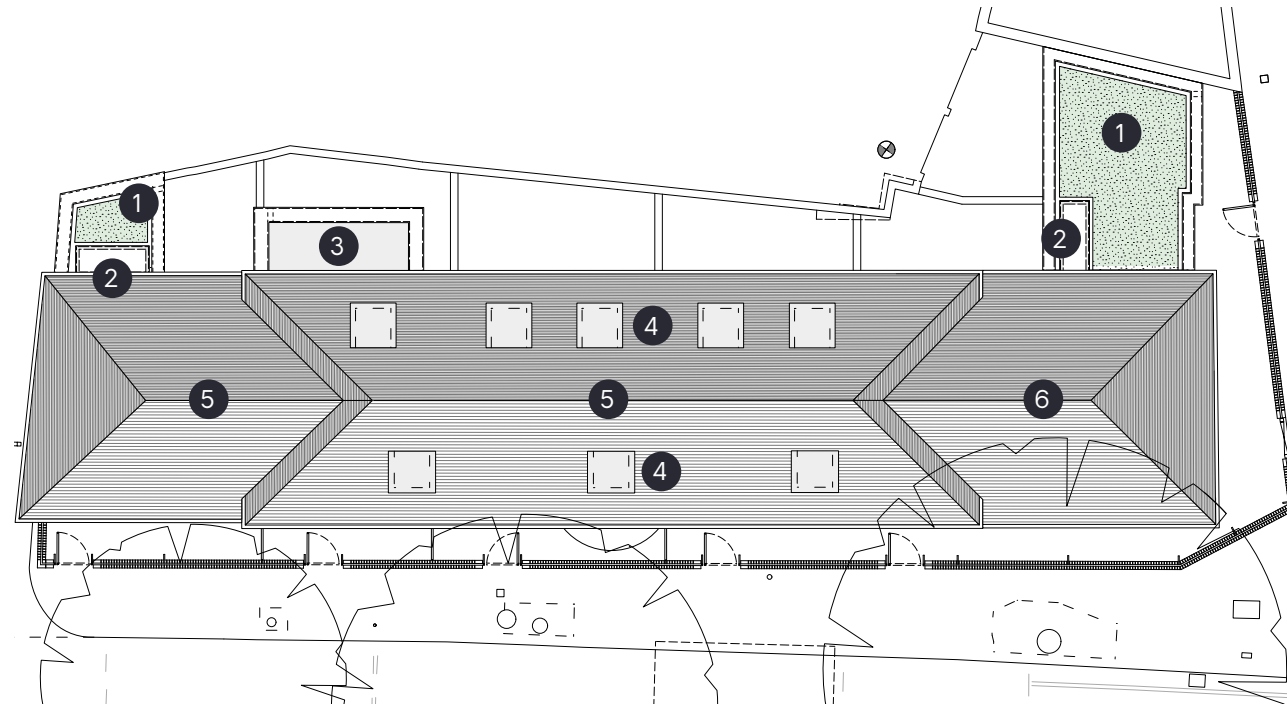
Doc Ref. 692A.SD.005
Revision A

Planning Condition 2019/4825/P_Discharge Document

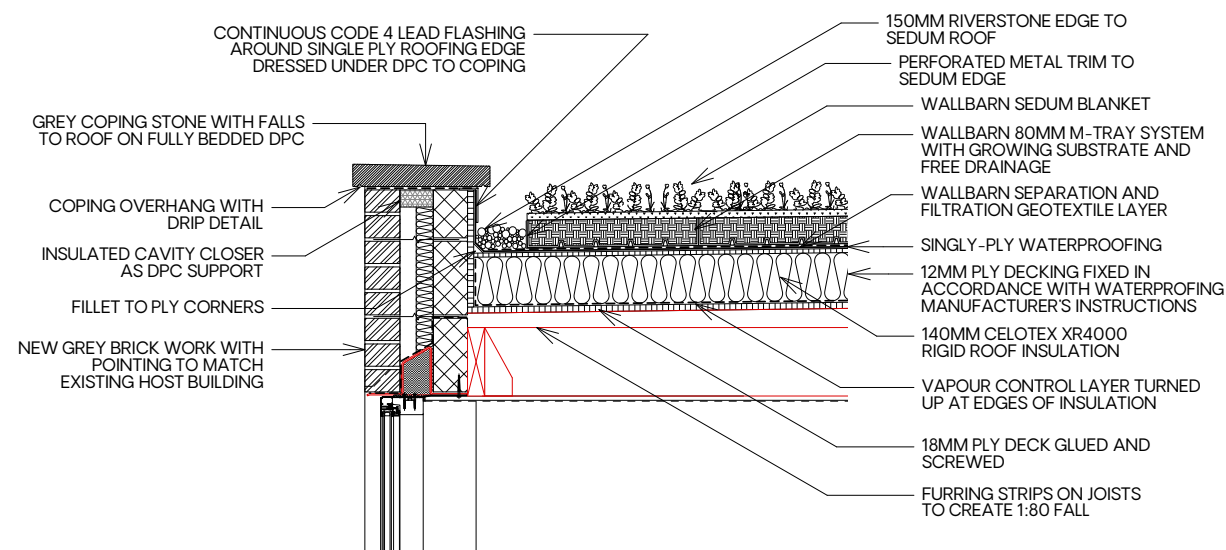
5. Before the relevant part of the work is begun , full details in respect of the living roof in the area indicated on the approved roof plan shall be submitted to and approved by the local planning authority.
The details shall include:
i.a detailed scheme of maintenance
ii.sections at a scale of 1:20 with manufacturers details demonstrating the construction and materials used
iii.full details of planting species and density

Planning condition 5	Raglan House	2
----------------------	--------------	---

GUNN



ROOF PLAN (NTS)



TYPICAL SEDUM ROOF SECTION DETAIL @ 1:20

ROOF FINISH LOCATIONS

Sedum locations as per planning approval ref: 2019/4824/P

1. Sedum Green Roof with Pebble Perimeter.
2. Roof light within Sedum roof.
3. Non-sedum flat roof (not overlooked).
4. Lead-clad dormers.
5. Existing tiled roof.
6. New tiled roof to match existing.

SEDUM SUPPLIER INFORMATION

WALLBARN GREEN ROOFS

Unit 16

Capital Business Centre,

22 Carlton Road,

South Croydon, CR2 0BS

WALLBARN.COM

+44 (0)208 916 2222



GUNN

SEDUM SPECIES

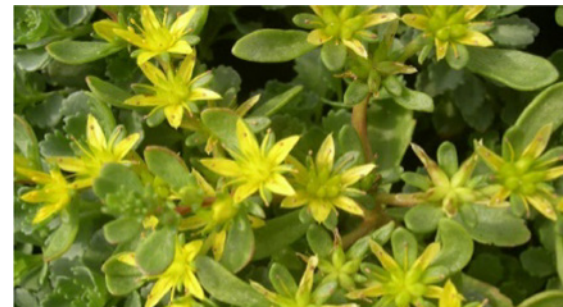
Standard sedum species used for M-Tray® modular green roof units. All sedum species will create a comprehensive layer over green cover all year round with flowers appearing at different intervals throughout the spring and summer.

**Aluminium retention trim and
Riverstone Pebble border to
sedum and roof light perimeters**



1. Sedum Selskianum 'Goldilocks'

Flowering period: August–September
Height Approx: 20cm



2. Sedum Hybridum 'Czar's Gold'

Flowering period: May–August
Height Approx: 15cm



3. Sedum Momentum

Flowering period: June–August
Height Approx: 20cm



4. Sedum Pulchellum

Flowering period: May–July
Height Approx: 10cm



5. Sedum Ellacombianum

Flowering period: June–August
Height Approx: 10cm



6. Sedum Montanum ssp Orientale

Flowering period: June–August
Height Approx: 20cm



7. Sedum Acre

Flowering period: June–August
Height Approx: 20cm



8. Sedum Album

Flowering period: June–August
Height Approx: 10cm



9. Sedum Sexangulare

Flowering period: July–August
Height Approx: 8cm



10. Sedum Spurium var. Coccineum

Flowering period: July–September
Height Approx: 15cm



11. Sedum Floriferum

Flowering period: July–August
Height Approx: 10cm



12. Sedum Reflexum

Flowering period: June–August
Height Approx: 30cm

GUNN

CARE & MAINTENANCE



Recommendations from Wallbarn Literature

Sedum requires less maintenance than other types of green roof but periodic attention to soil moisture and feed levels as well as the removal of weeds is still recommended to maintain healthy vegetation. We recommend carrying out maintenance on your green roof at regular intervals, especially in the Spring and Autumn including:

- Removing weeds by hand.
- Clearing debris from drainage outlets.
- Applying Wallbarn slow-release granular fertiliser.

Sedum is unique in that its metabolism works in reverse to most other plants. For example, it closes its stamen during the day which makes it more efficient at conserving water.

- Sedum leaves naturally change colour throughout the year. They may take on a russet colour during droughts, strong winds and frosts. This is normal and they will revert to their green hues over time.
- Some sedum species keep their leaf structure all year round and some 'die back'. Their appearance throughout the year depends on the type of species they are.
- If stems and leaves start to 'shivel' back, this is usually due to a lack of water.
- Irrigate and monitor moisture levels for several weeks until sedum recovers.

GUNN

020 7377 5458
gunn-associates.com