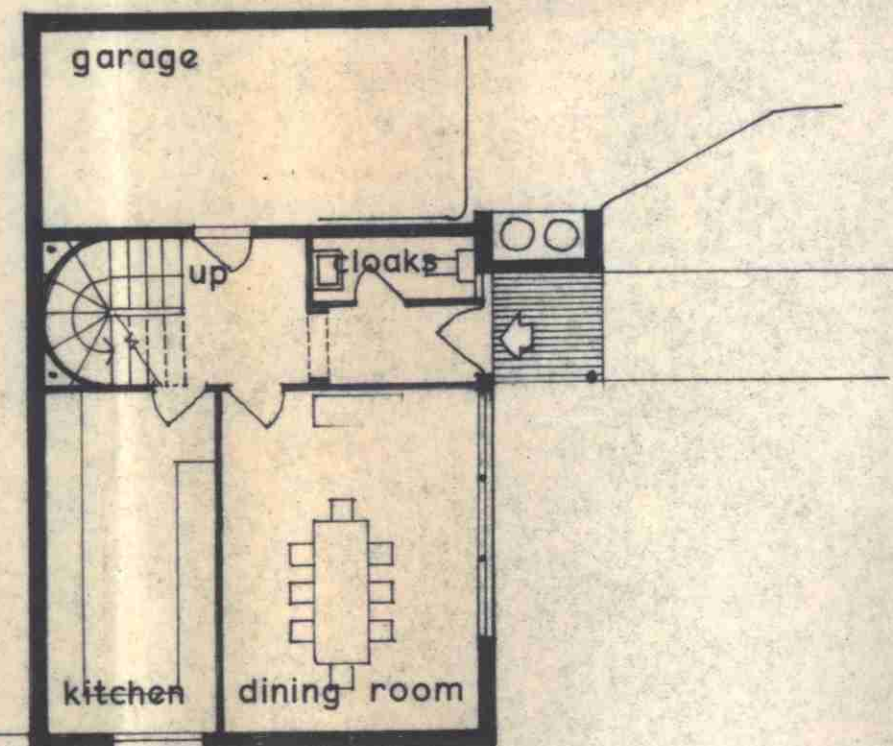
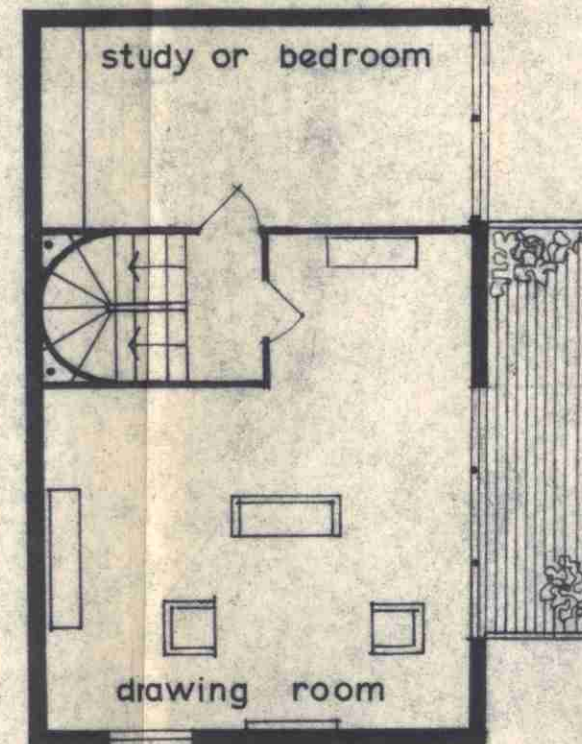


TYPE A

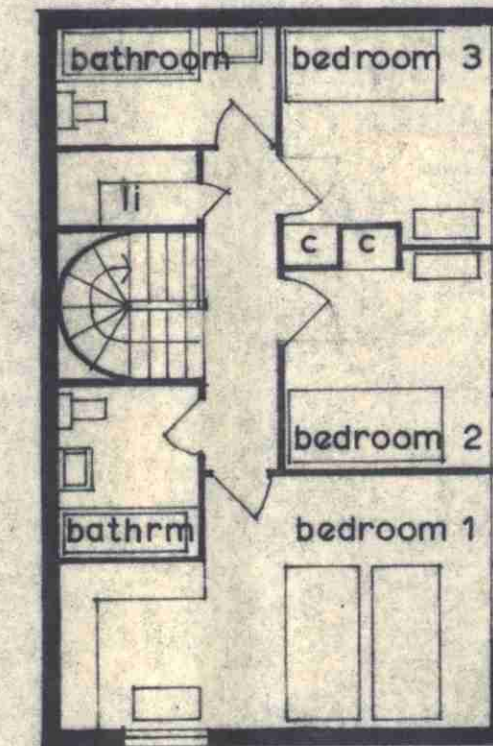
DRAWING ROOM	304 sq. ft.
DINING ROOM	154 sq. ft.
STUDY or extra bedroom	148 sq. ft.
BEDROOM 1	174 sq. ft.
BEDROOM 2	80 sq. ft.
BEDROOM 3	80 sq. ft.
TOTAL	1566 sq. ft.



GROUND FLOOR



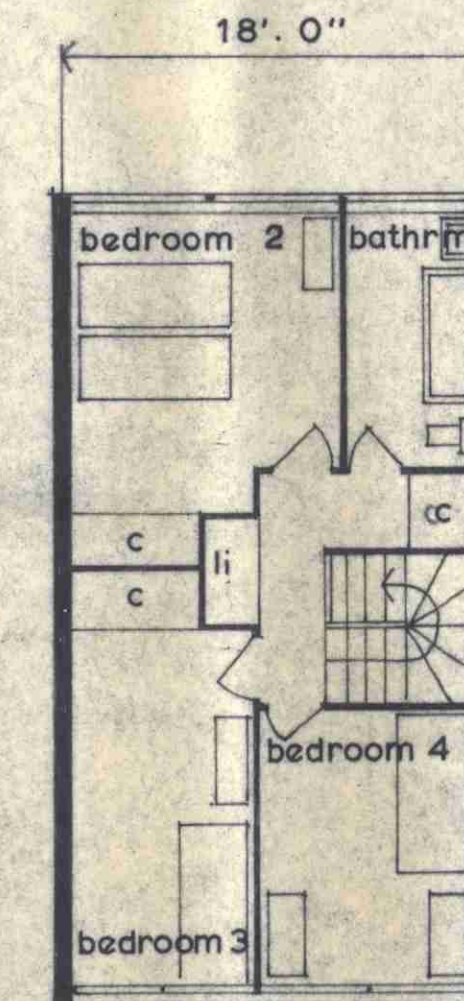
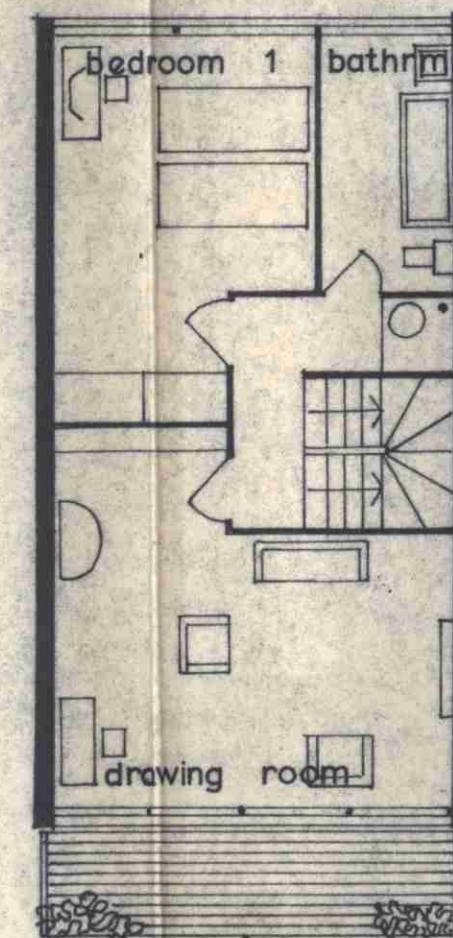
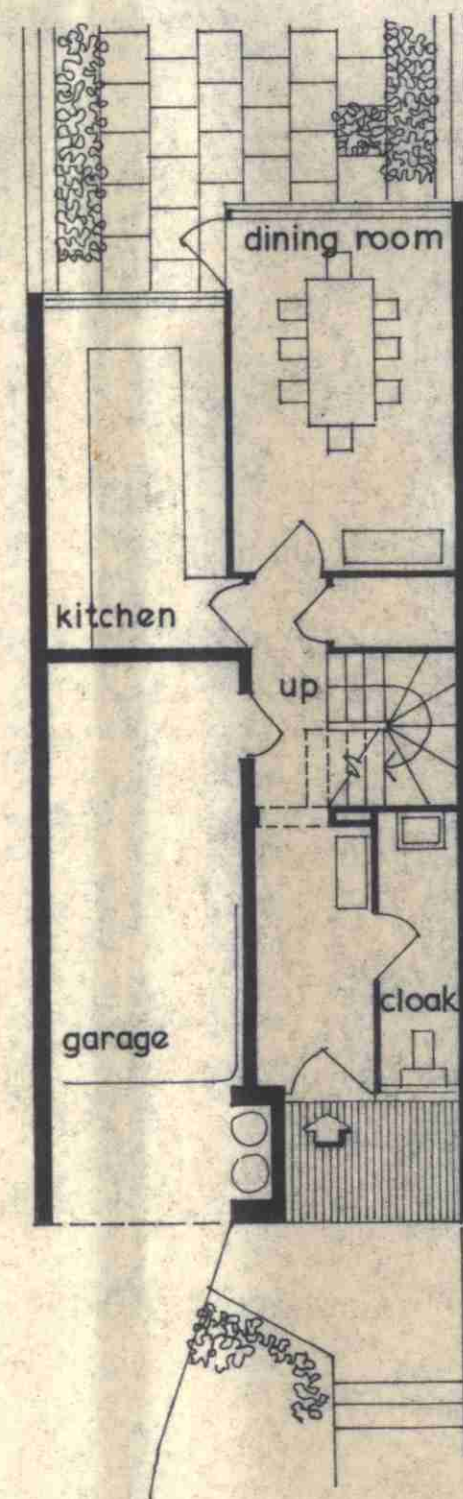
FIRST FLOOR



SECOND FLOOR

TYPE B

DRAWING ROOM	204 sq. ft.
DINING ROOM	135 sq. ft.
BEDROOM 1	161 sq. ft.
BEDROOM 2	145 sq. ft.
BEDROOM 3	120 sq. ft.
BEDROOM 4	99 sq. ft.
TOTAL	1685 sq. ft.



AMENDMENTS

**Louis de Soissons, Peacock
Hodges, Robertson & Fraser**

LONDON EXETER & WELWYN GARDEN CITY

Drawn Checked :

PLANS

52 ETON AVENUE

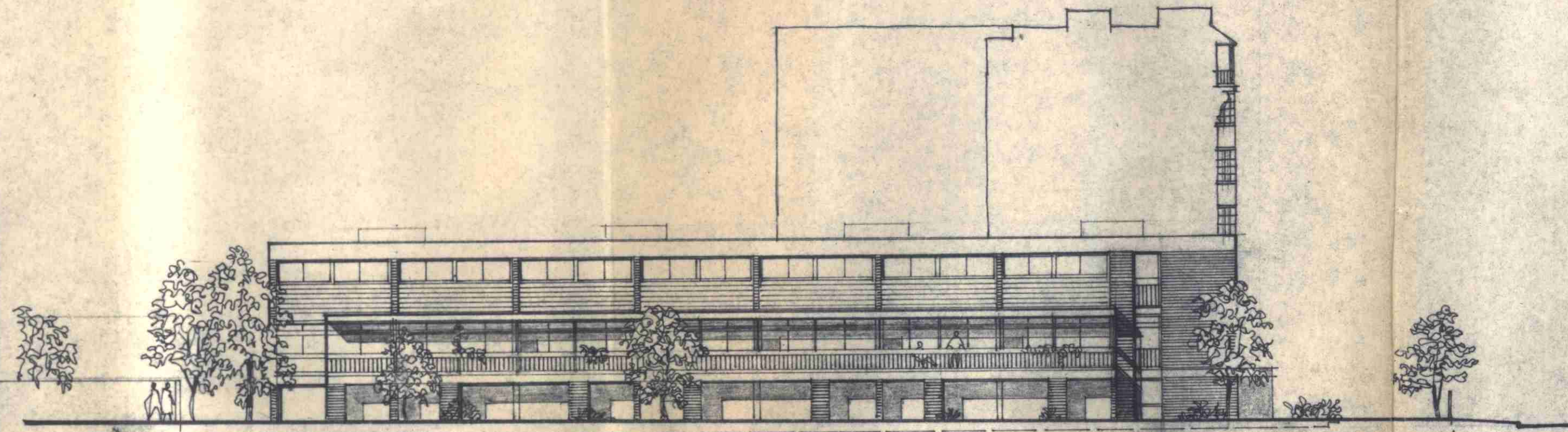
Drawing No :

23 | P 16

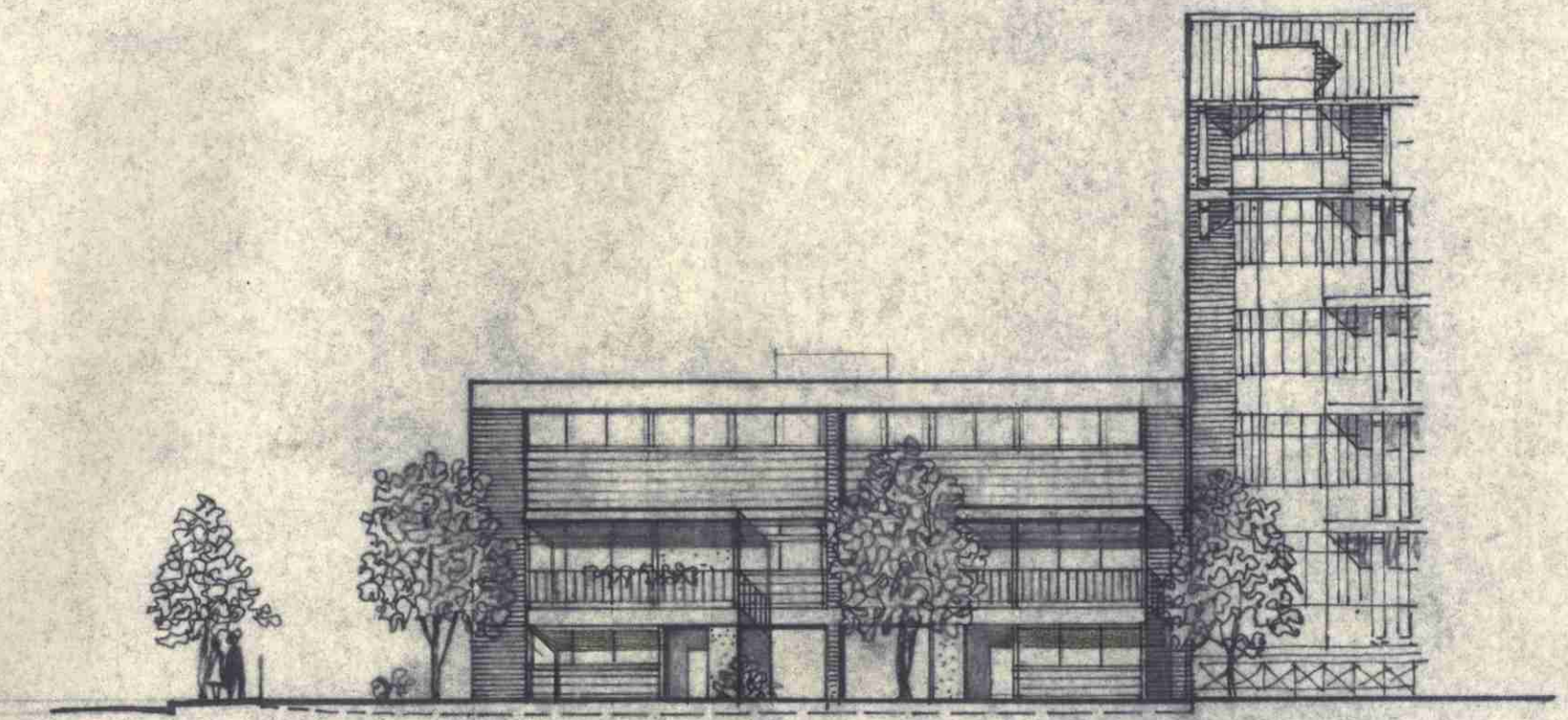
Scale: 1/8" = 1', 0"

Date: JULY 1962

ARCHITECT L.C.C.
No. 10623

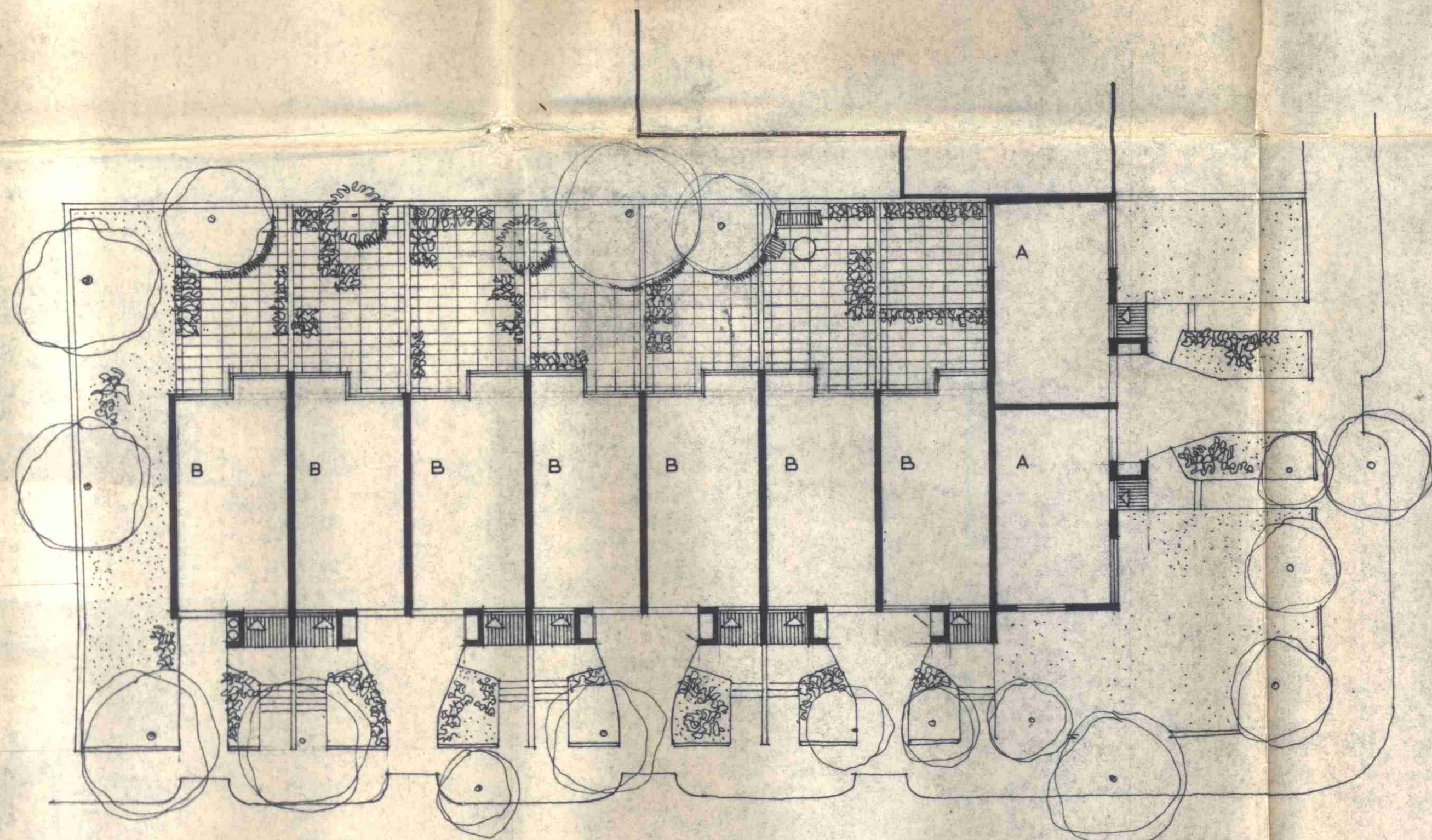


ELEVATION TO CROSSFIELD ROAD

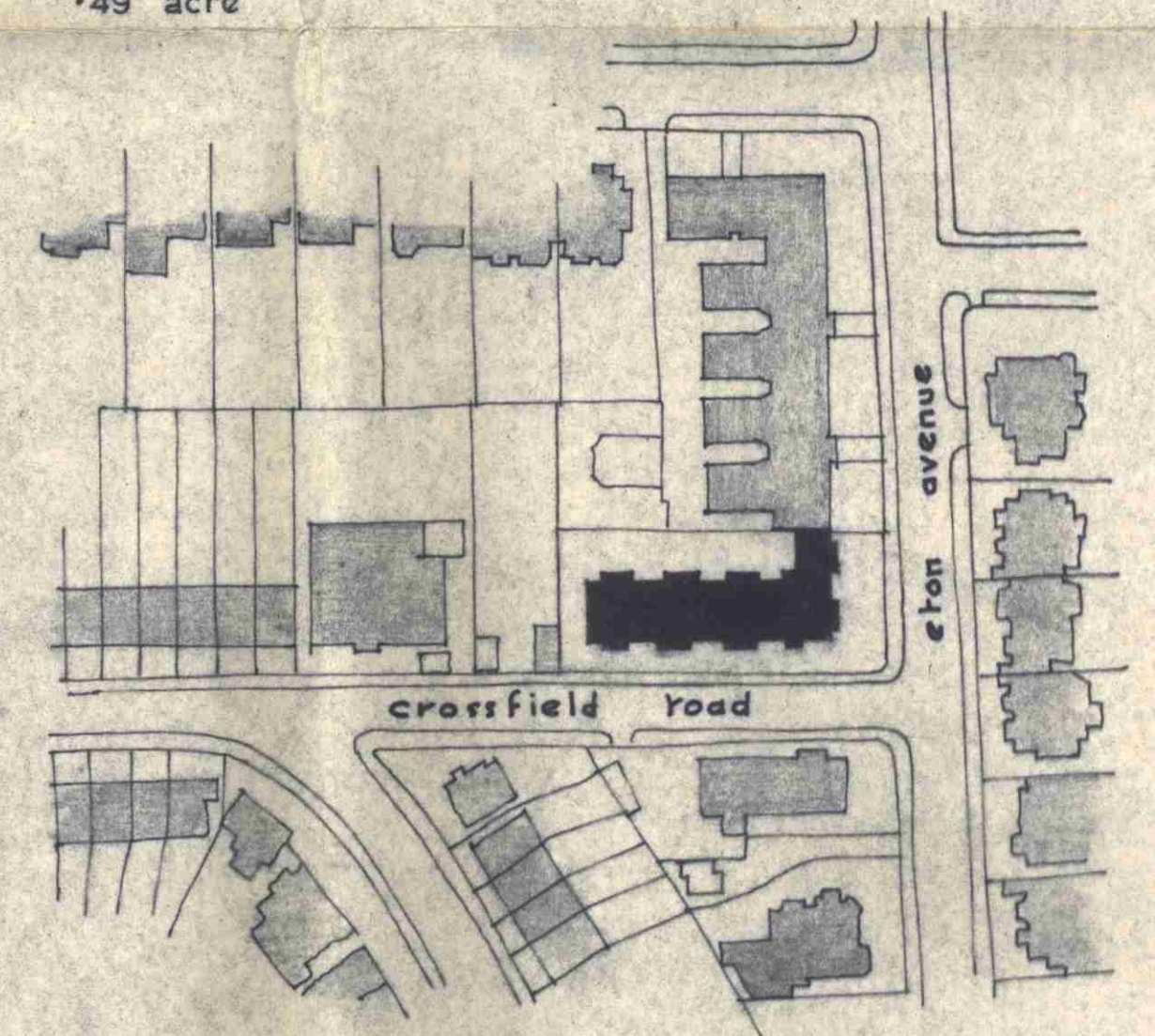


ELEVATION TO ETON AVENUE

GROSS AREA OF SITE .49 acre



PLAN AT GROUND LEVEL



LOCATION PLAN scale 1:1250

10623
15 JUL 1962
REF TO ACKD.

**Louis de Soissons, Peacock
Hodges, Robertson & Fraser**
LONDON EXETER & WELWYN GARDEN CITY

LAYOUT & ELEVATIONS

Drawing No:

23 | P 17

Drawn Checked :

52, ETON AVENUE

Scale: 1/16" = 1', 0"

Date: JULY 1962

AMENDMENTS

B