

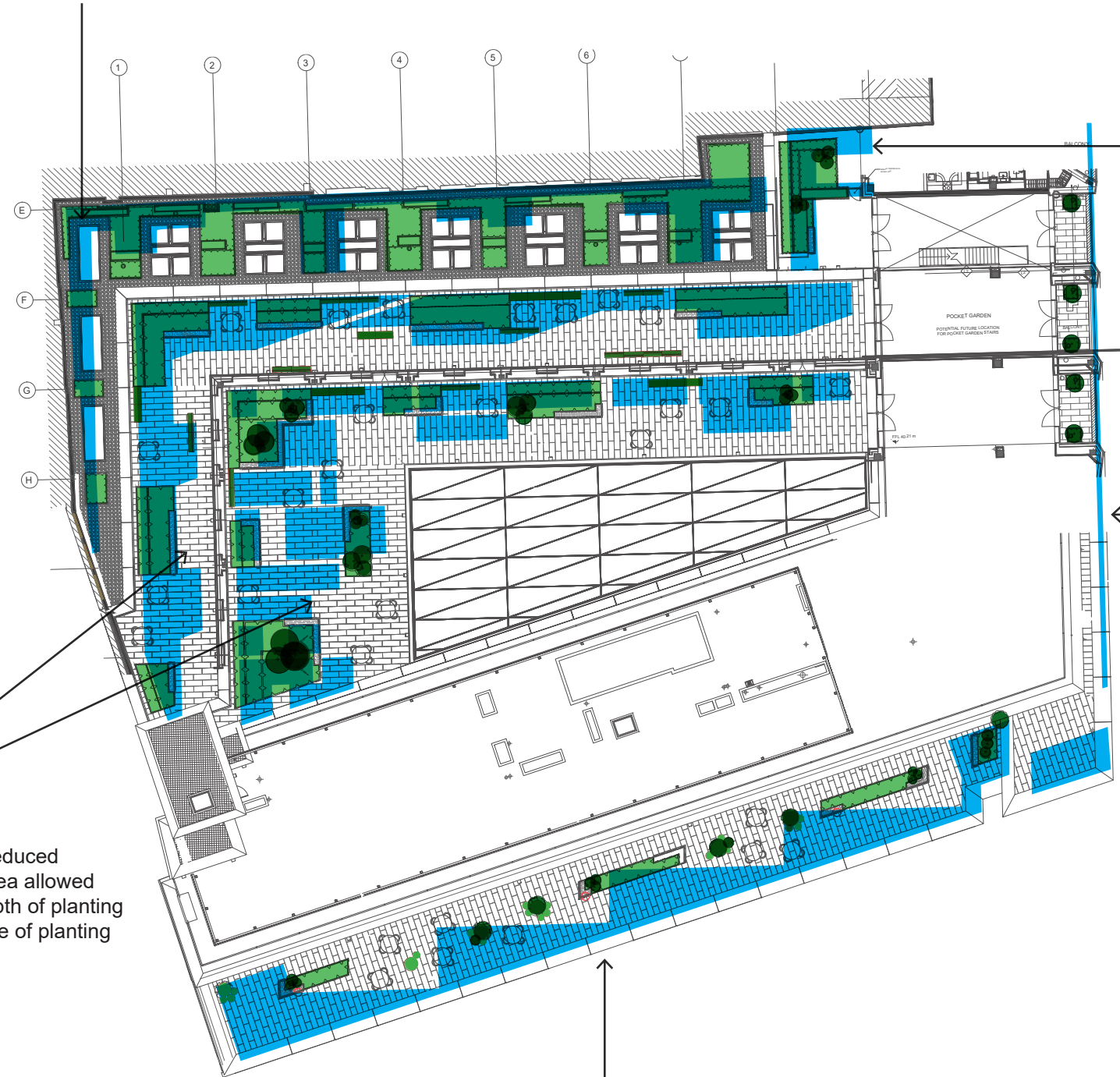
The Lantern / Stephenson House

Roof Terrace Design Development

KEY

- Planting proposals 2017 application
- Planting proposals 2022

Level 1
 Roof lights changed in position and size, terrace no longer accessible for amenity use. Areas of synthetic turf replaced with planting resulting in no change in overall area of planting. Biodiversity panels added



Level 2
 Technical issues due to drainage, balustrade and paving / insulation design as well as development of glazing and access information led to changes in layout. Synthetic turf omitted.

Level 7
 Green roof strip omitted as technically unachievable once all the technical constraints had been understood.

Level 7
 Loading constraints as well as the position and height of the balustrade meant the area of planting to the amenity terrace to the 7th floor would be reduced significantly. As such the planting was omitted entirely

Levels 3 & 4
 Loading and technical issues reduced footprint of planters. Smaller area allowed localised areas with greater depth of planting substrate to support wider range of planting types.

Level 6
 Planting pulled away from terrace edge due to balustrade design. Planters located at centre of roof to suit loading and paving / insulation design constraints.

The Lantern - Roof Terraces

Planning
 January 2022

