

## 4.4 Residential typologies

The majority of the Character Study area has been developed with homes. The character of these homes and the neighbourhoods within which they are located varies considerably. This character is immediately experienced when walking or cycling through an area and is derived from both the building typology and how this is combined and arranged.

This is hugely influenced by the period within which the buildings originate. In parts of the Borough there are extensive areas where connected streets are lined with Victorian houses; elsewhere post-war flatted estates are more prevalent.

Through history the development form has changed and the character typologies identified reflect this. Twelve residential character typologies are identified. Four are composed of Victorian buildings, two derive from the first half of the 20th Century, two to the post-war period and two to latter part of the 20th century. One recognises areas where a mix of residential building types from different periods are found.

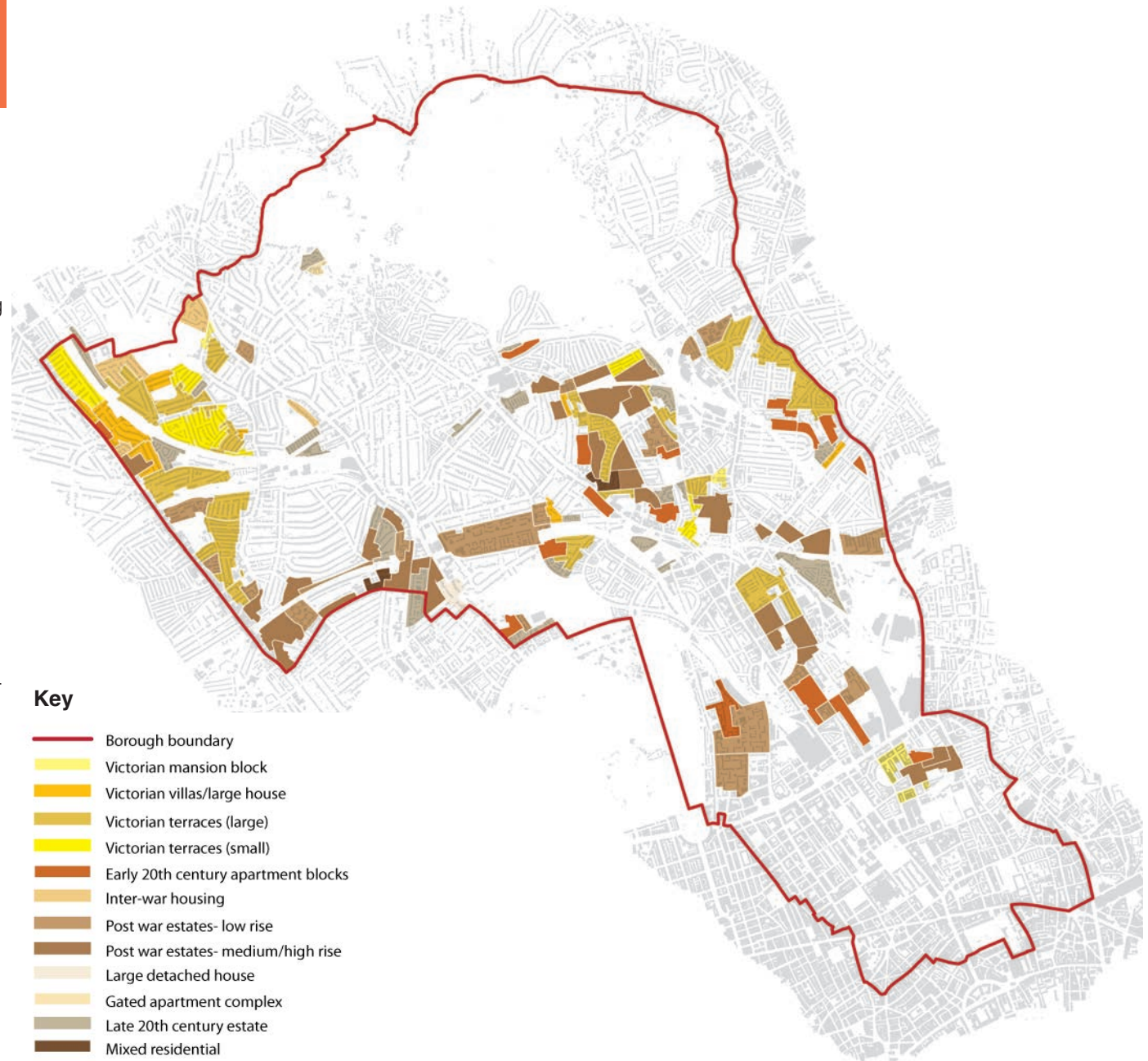


Figure 4.4: Residential character typologies