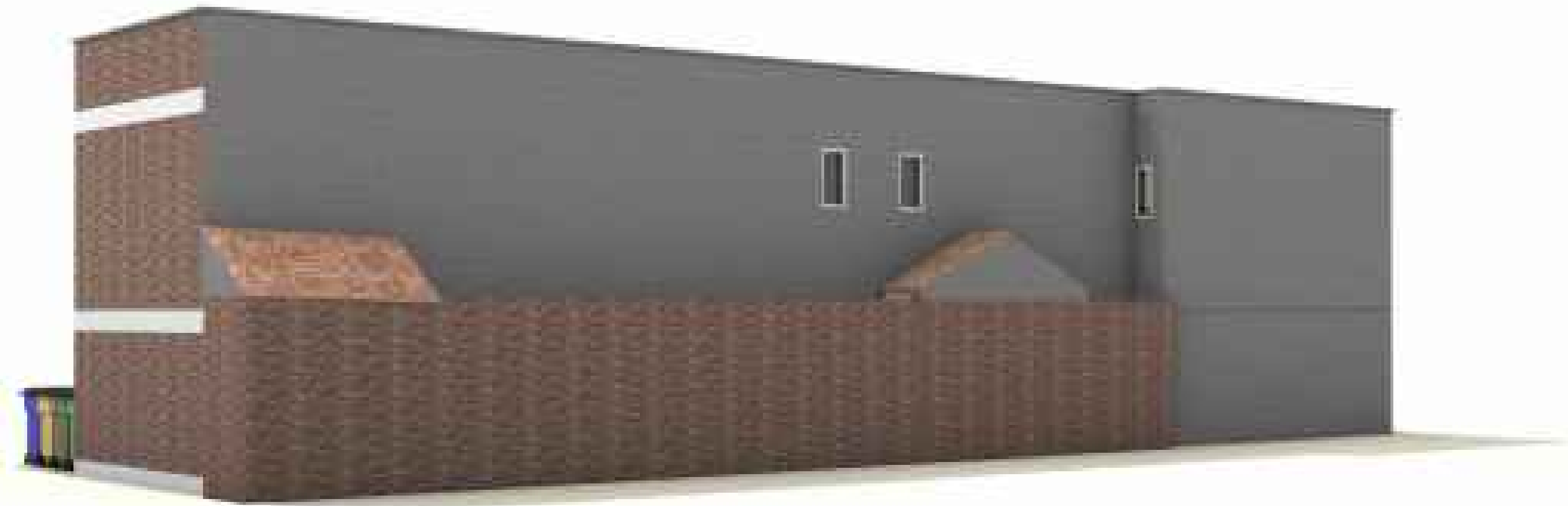


Existing Rear & Side Elevation to be only Restored



Proposed Rear Elevation - North West

Registered as an Architect under the Architect Act 1997



Company n. 11868709 & its office registered in England & Wales

Don't scale for building control or construction purpose, may be scaled for planning purpose. Any variation or supplementary drawings are to be approved by the Architect. Ownership & Copyright of the drawings belongs to ASP Architects London Ltd

Annotations:

- 1- The scope of the drawings is for planning permission and not for construction drawings.
- 2- External Windows & Doors only to be Removed & Replaced with new frame
- 3- Rear & Side elevation will remain the same only with restoration of the whole existing degrading on facade
- 4- Any discrepancy the drawings are prevailed

Issue for Planning Permission	21/01/2022	0
-------------------------------	------------	---

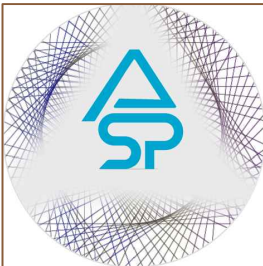
Description	Date	Rev.
-------------	------	------

CLIENT

Newmake Properties Ltd
245 Whitton Avenue East
Greenford, UB6 0QQ

LOCAL AUTHORITY

Camden Council



ASP ARCHITECTS LONDON LTD

Alshajrawi Sami Projects
3 Russell Road, Flat n.2
LONDON W14 8JA - ENGLAND
E-Mail: info@asparchitects.co.uk
www.asparchitects.co.uk
Tel. N.: +44 02030341350

PROJECT:

Change of Use From E to C3
1-6 Speedy Place, London WC1H 8BU

TITLE:

Demolition/Removal & New Build
Rear Elevation - North West

Drawn By Sami A.	Checked By ASP	Approved By A.A.
---------------------	-------------------	---------------------

Scale 1/4" (1:40) @A1	Date 21/01/2022
--------------------------	--------------------

Project Code ASP-21105	Drawing No. P251	Revision 0
---------------------------	---------------------	---------------