

Registered as an Architect under the Architect Act 1997



Company n. 11868709 & its office registered in England & Wales

Don't scale for building control or construction purpose, may be scaled for planning purpose. Any variation or supplementary drawings are to be approved by the Architect. Ownership & Copyright of the drawings belongs to ASP Architects London Ltd

Issue for Planning Permission	21/01/2022	0
-------------------------------	------------	---

Description	Date	Rev.
-------------	------	------

CLIENT
Newmake Properties Ltd
 245 Whitton Avenue East
 Greenford, UB6 0QQ

LOCAL AUTHORITY
Camden Council



ASP ARCHITECTS LONDON LTD
 Alshajrawi Sami Projects
 3 Russell Road, Flat n.2
 LONDON W14 8JA - ENGLAND
 E-Mail: info@asparchitects.co.uk
 www.asparchitects.co.uk
 Tel. N.: +44 02030341350

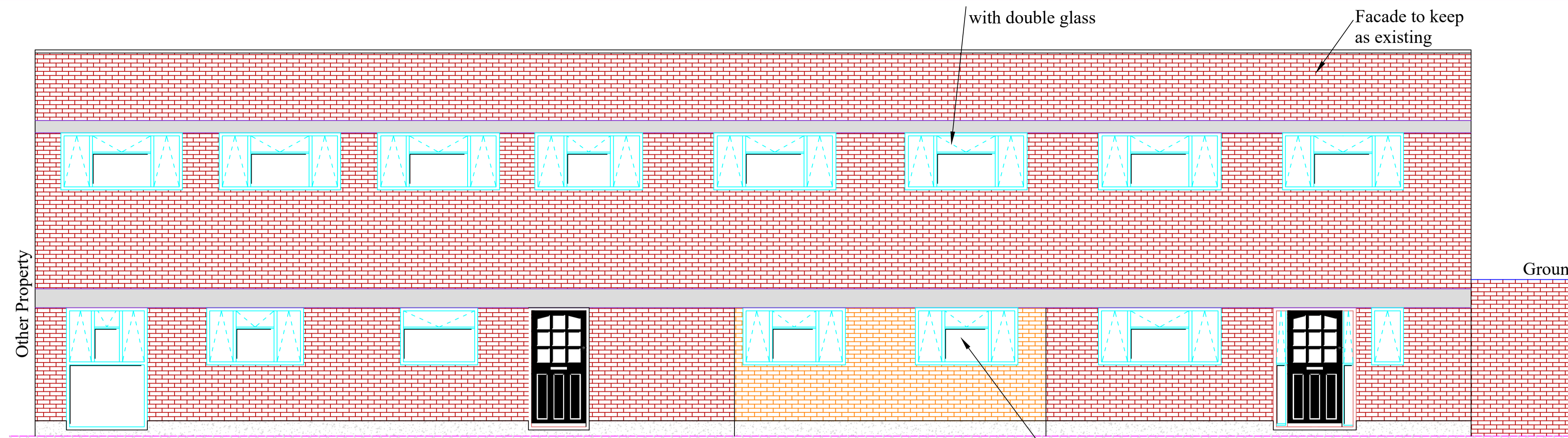
PROJECT:
Change of Use From E to C3
 1-6 Speedy Place, London WC1H 8BU

TITLE:
Proposed Elevations
North-South / East & West South

Drawn By Sami A.	Checked By ASP	Approved By A.A.
---------------------	-------------------	---------------------

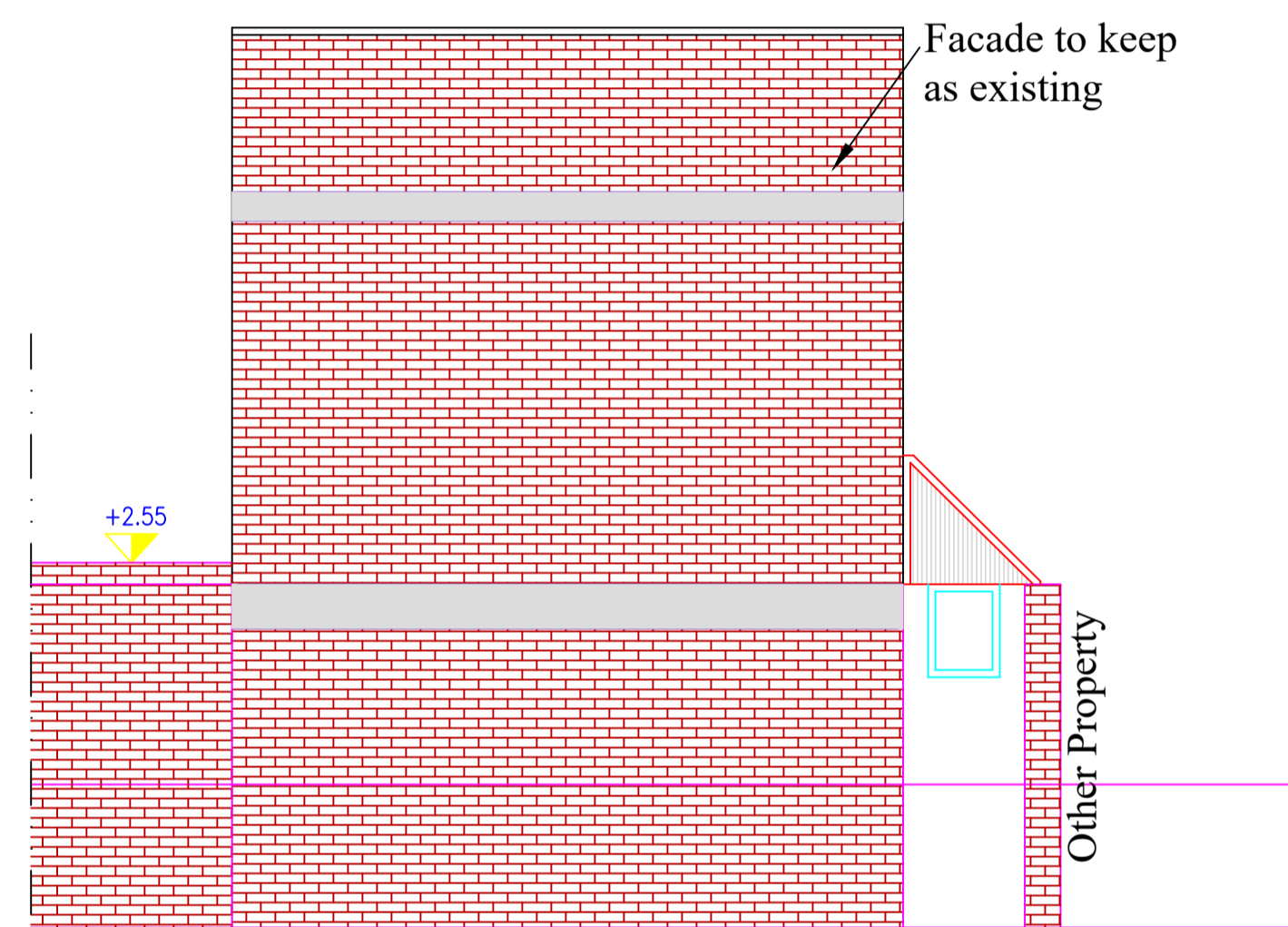
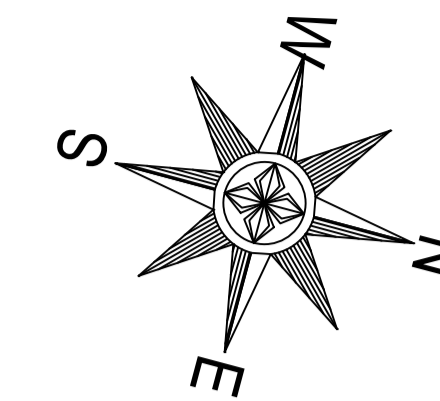
Scale 1/4" (1:40) @A1	Date 21/01/2022
--------------------------	--------------------

Project Code ASP-21105	Drawing No. P210	Revision 0
---------------------------	---------------------	---------------

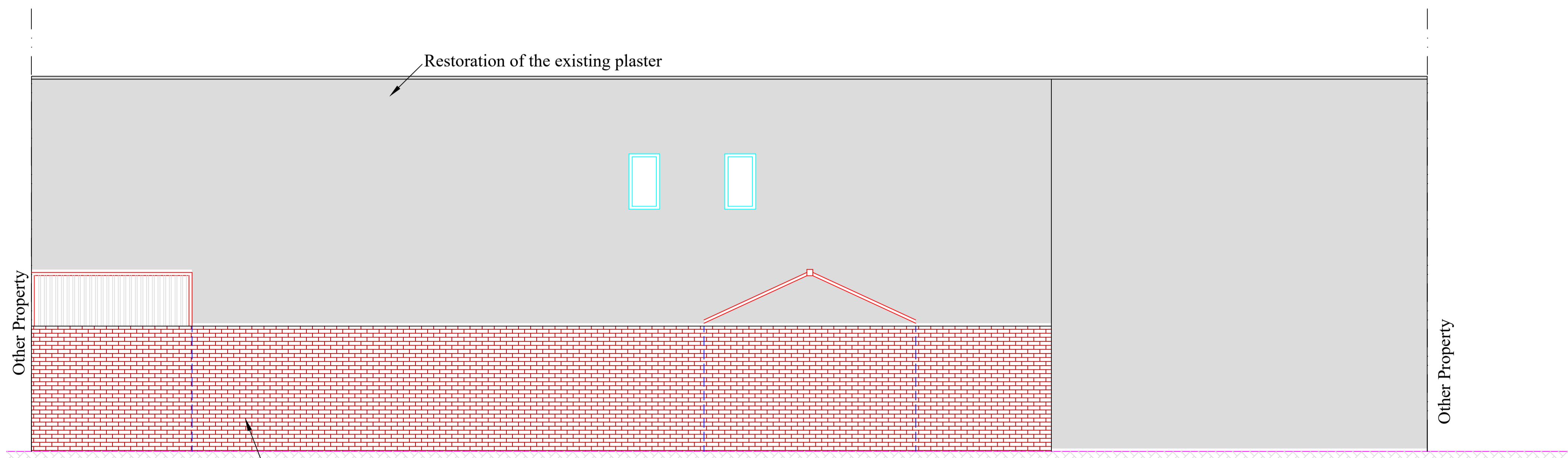
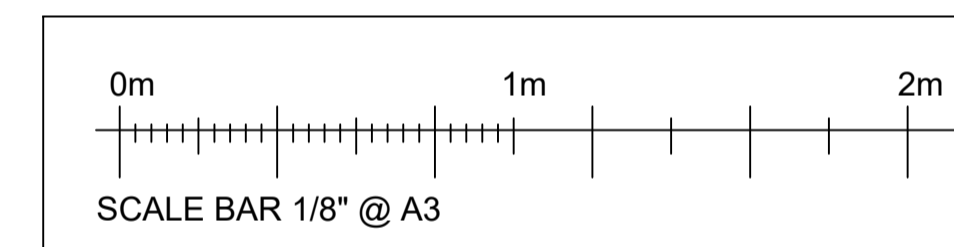


Elevation South - East

New Proposal Opening Window



Elevation North - East



Elevation South - East