

Rev Date Revision By Chk

Notes

- For Health & Safety related information please refer to the Rolling Designers Risk Register. Where relevant, elements identified on this register are highlighted within the model and on the drawings with the following logo.
- DO NOT SCALE FROM DRAWING;
- Drawing to be printed in colour;
- All information contained in this drawing (including digital data) should be checked and verified prior to any fabrication or construction. Any inconsistencies or omissions should be reported to Bennetts Associates;
- Unless otherwise stated, all grids or co-ordinates are based on the Ordnance Survey National Grid via GRS Observations;
- Unless otherwise stated, all spot heights and levels are expressed as AOD for "above ordnance datum" based on the Ordnance Survey ODN (Ordnance Datum Newlyn).

Bennetts Associates Architects make no warranties, express or implied, with respect to the reuse of the data provided hereafter, regardless of its format or the means of its transmission.
 All existing survey data is based on, or reference from, 3rd Party information.
 Unless otherwise stated, all structural, mechanical, electrical information is based on, or reference from, 3rd Party data.

© Crown Copyright 2016. All Rights Reserved.
 Ordnance Survey License 123456

BENNETTS ASSOCIATES

1 Rawstone Place, London EC1V 7NL
 T +44(0)207 5203300 • www.bennettsassociates.com
 E mail@bennettsassociates.com

For Bennetts Associates' electronic information issue disclaimer -
 www.bennettsassociates.com/informationandisclaimer/

Project
Tribeca - The Apex
 REEF

Drawing Title
Roof Plan
 Bird and bat box locations

Drawing Number
TBA_1A-BAA-Z1-XX-SK-A-00258_01

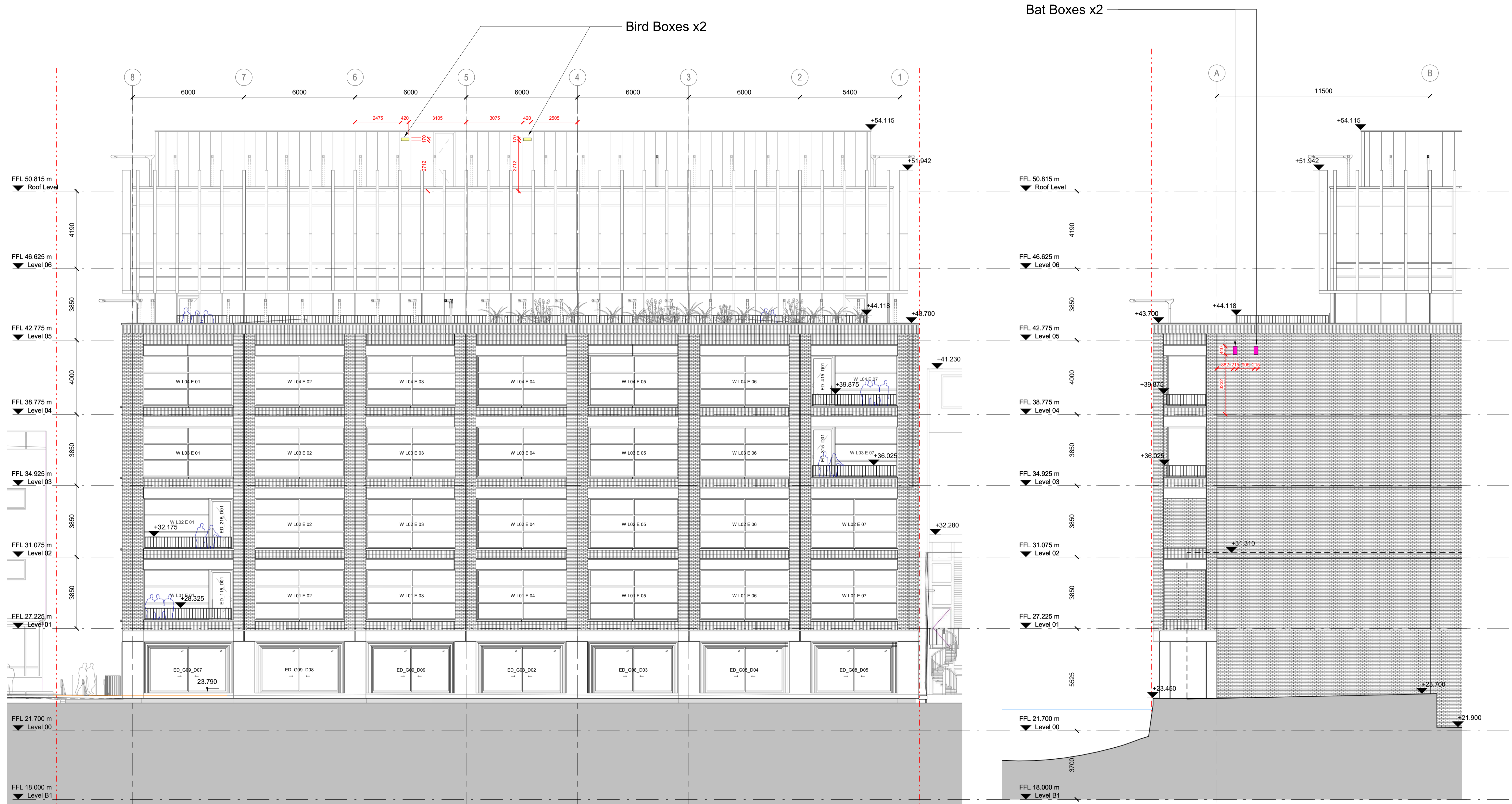
Revision/Suitability

Scale @ A3 Scale @ A1
 1 : 100

Revision Date
 YY MM DD

Project No. TBA_1A

Revision Date
 YY MM DD



Rev	Date	Revision	By	Chk	Notes
					<p>For Health & Safety related information please refer to the Rolling Designers Risk Register. Where relevant, elements identified on this register are highlighted within the model and on the drawings with the following logo.</p> <ul style="list-style-type: none"> - DO NOT SCALE FROM DRAWING; - Drawing to be printed in colour; - All information contained in this drawing (including digital data) should be checked and verified prior to any fabrication or construction. Any inconsistencies or omissions should be reported to Bennetts Associates; - Unless otherwise stated, all grids or co-ordinates are based on the Ordnance Survey National Grid via GRS Observations; - Unless otherwise stated, all spot heights and levels are expressed as AOD for "above ordnance datum" based on the Ordnance Survey ODN (Ordnance Datum Newlyn). <p>Bennetts Associates Architects make no warranties, express or implied, with respect to the result of the data provided hereafter, regardless of its format or the means of its transmission.</p> <p>All existing survey data is based on, or reference from, 3rd Party information. Unless otherwise stated, all structural, mechanical, electrical information is based on, or reference from, 3rd Party data.</p> <p>© Crown Copyright 2016. All Rights Reserved. Ordnance Survey License 123456</p>

BENNETTS ASSOCIATES

1 Rawstone Place, London EC1V 7NL
 T +44 (0)207 5203300 • www.bennettsassociates.com
 E mail@bennettsassociates.com

For Bennetts Associates' electronic information issue disclaimer - www.bennettsassociates.com/informationanddisclaimer/

Project
Tribeca - The Apex
REEF

Drawing Title
Bird and bat box locations

Drawing Number
TBA_1A-BAA-Z1-XX-SK-A-00258_02

Revision/Suitability
Revision Date
YY MM DD

Scale @ A3
Scale @ A1
1 : 100

Project No. TBA_1A