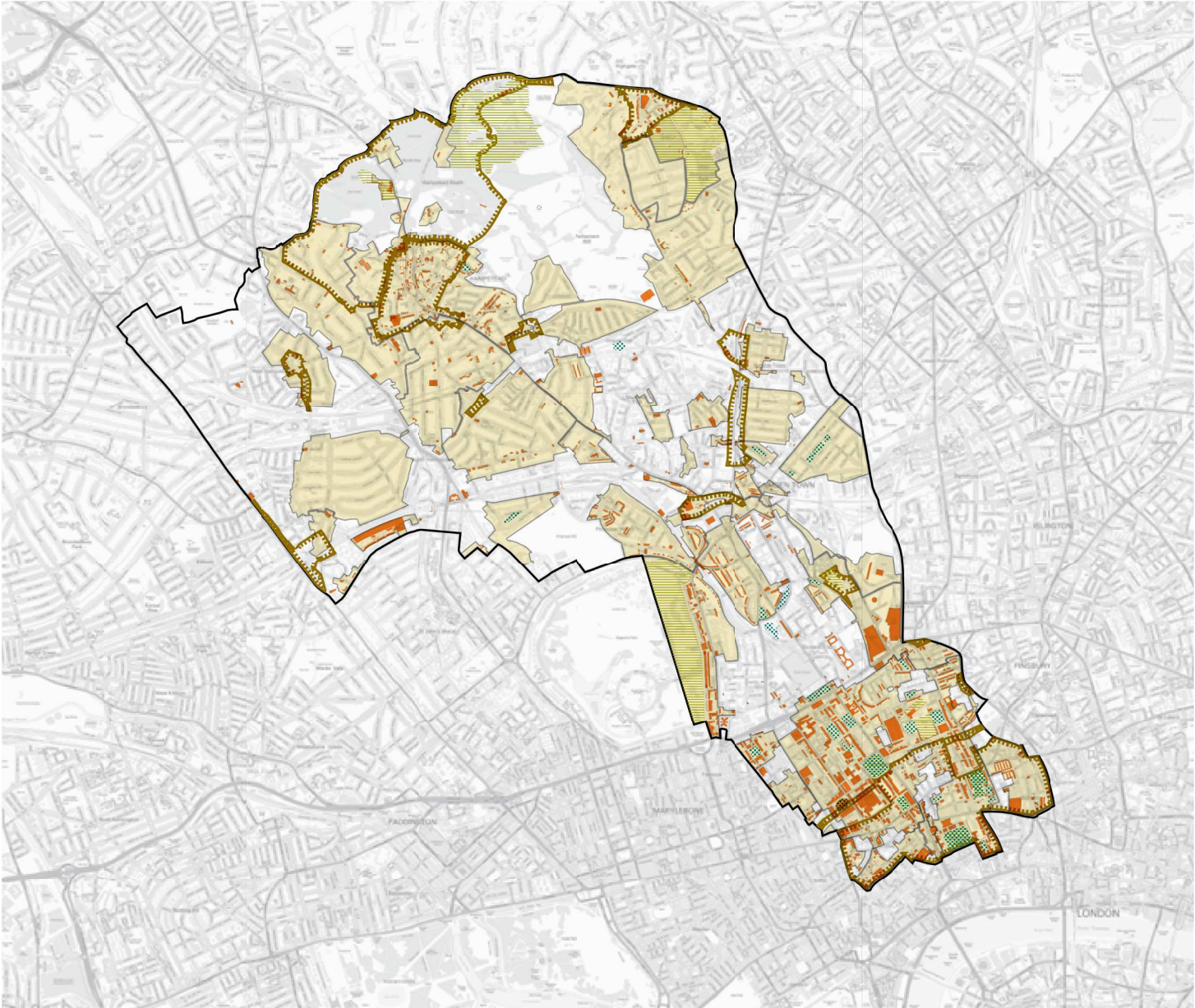


Heritage

Camden's heritage

- 7.39 Camden has a rich architectural heritage with many special places and buildings from throughout Camden's history (see "Map 4: Heritage and Archaeological Sites" on page 210). 39 areas, covering much of the borough, are designated as conservation areas, recognising their special architectural or historic interest and their character and appearance. We have prepared conservation area statements, appraisals and management strategies that provide further guidance on the character of these areas. We will take these documents into account as material considerations when we assess applications for planning permission in these areas.
- 7.40 Over 5,600 buildings and structures in Camden are nationally listed for their special historical or architectural interest and 53 of the borough's squares are protected by the London Squares Preservation Act 1931. In addition, 14 open spaces in Camden are on Historic England's Register of Parks and Gardens. The Council also maintains a local list of over 400 non-designated heritage assets. Camden also has a generally well-preserved archaeological heritage, with 13 identified archaeological priority areas, although this can be vulnerable to development and changes in land use.
- 7.41 The Council places great importance on preserving the historic environment. Under the Planning (Listed Buildings and Conservation Areas) Act the Council has a responsibility to have special regard to preserving listed buildings and must pay special attention to preserving or enhancing the character or appearance of conservation areas. The National Planning Policy Framework states that in decision making local authorities should give great weight to conservation of designated heritage assets in a manner appropriate to their significance. The Council expects that development not only conserves, but also takes opportunities to enhance, or better reveal the significance of heritage assets and their settings.

Map 4: Heritage and Archaeological Sites



- Conservation area
- Listed building
- Archaeological priority area
- London Squares
- Gardens and Squares of Historic Interest
- Borough boundary

Policy D2 Heritage

The Council will preserve and, where appropriate, enhance Camden's rich and diverse heritage assets and their settings, including conservation areas, listed buildings, archaeological remains, scheduled ancient monuments and historic parks and gardens and locally listed heritage assets.

Designated heritage assets

Designated heritage assets include conservation areas and listed buildings. The Council will not permit the loss of or substantial harm to a designated heritage asset, including conservation areas and Listed Buildings, unless it can be demonstrated that the substantial harm or loss is necessary to achieve substantial public benefits that outweigh that harm or loss, or all of the following apply:

- a. the nature of the heritage asset prevents all reasonable uses of the site;
- b. no viable use of the heritage asset itself can be found in the medium term through appropriate marketing that will enable its conservation;
- c. conservation by grant-funding or some form of charitable or public ownership is demonstrably not possible; and
- d. the harm or loss is outweighed by the benefit of bringing the site back into use.

The Council will not permit development that results in harm that is less than substantial to the significance of a designated heritage asset unless the public benefits of the proposal convincingly outweigh that harm.

Conservation areas

Conservation areas are designated heritage assets and this section should be read in conjunction with the section above headed 'designated heritage assets'. In order to maintain the character of Camden's conservation areas, the Council will take account of conservation area statements, appraisals and management strategies when assessing applications within conservation areas.

The Council will:

- e. require that development within conservation areas preserves or, where possible, enhances the character or appearance of the area;
- f. resist the total or substantial demolition of an unlisted building that makes a positive contribution to the character or appearance of a conservation area;
- g. resist development outside of a conservation area that causes harm to the character or appearance of that conservation area; and
- h. preserve trees and garden spaces which contribute to the character and appearance of a conservation area or which provide a setting for Camden's architectural heritage.

Listed Buildings

Listed buildings are designated heritage assets and this section should be read in conjunction with the section above headed 'designated heritage assets'. To preserve or enhance the borough's listed buildings, the Council will:

- i. resist the total or substantial demolition of a listed building;
- j. resist proposals for a change of use or alterations and extensions to a listed building where this would cause harm to the special architectural and historic interest of the building; and
- k. resist development that would cause harm to significance of a listed building through an effect on its setting.

Archaeology

The Council will protect remains of archaeological importance by ensuring acceptable measures are taken proportionate to the significance of the heritage asset to preserve them and their setting, including physical preservation, where appropriate.

Other heritage assets and non-designated heritage assets

The Council will seek to protect other heritage assets including non-designated heritage assets (including those on and off the local list), Registered Parks and Gardens and London Squares.

The effect of a proposal on the significance of a non-designated heritage asset will be weighed against the public benefits of the proposal, balancing the scale of any harm or loss and the significance of the heritage asset.

Enhancing the historic environment

7.42

The Council has a proactive approach to conserving heritage assets. In addition to the application of Local Plan policies the Council protects the historic environment through the following areas of work:

- Conservation Area Management Strategies: The Council works with the Conservation Area Advisory Committees to update and support the implementation of the strategies.
- Heritage at Risk: The Council identifies buildings and structures at risk and proactively seeks to conserve and where required put them back into viable use, including identifying sources of funding.
- Local list of undesignated heritage assets: The Council introduced the local list in 2015 and it will be updated annually.
- Guidance: The Council has adopted detailed guidance for the preservation of heritage assets in the supplementary planning document Camden Planning Guidance on design, and Retrofitting Planning Guidance (for sustainability measures in historic buildings). The Council updates planning guidance as required.
- Area based work: Conservation and enhancement of the historic environment is a key objective of area action plans and the Site Allocations.

The Fitzrovia Area Action Plan for example sets principles for developing key sites which retain and enhance the setting of listed buildings.

- 7.43 The Council recognises that development can make a positive contribution to, or better reveal the significance of, heritage assets and will encourage this where appropriate. Responding appropriately to the significance of heritage assets and its setting can greatly enhance development schemes (for example, King's Cross Central).

Designated heritage assets

- 7.44 Designated heritage assets include listed buildings and structures, registered parks and gardens and conservation areas. The Council will apply the policies above and will not permit harm to a designated heritage asset unless the public benefits of the proposal outweigh the harm. Further guidance on public benefits is set out in National Planning Practice Guidance (Paragraph: 020 Reference ID: 18a-020-20140306). Any harm to or loss of a designated heritage asset will require clear and convincing justification which must be provided by the applicant to the Council. In decision making the Council will take into consideration the scale of the harm and the significance of the asset.
- 7.45 In accordance with the National Planning Policy Framework the Council will only permit development resulting in substantial harm to or loss to a grade II listed building, park or garden in exceptional circumstances and will only permit development resulting in substantial harm to or loss to a grade I and II* listed building, grade I and II* registered park or garden in wholly exceptional circumstances.

Conservation areas

- 7.46 In order to preserve or enhance important elements of local character, we need to recognise and understand the factors that create that character. The Council has prepared a series of conservation area statements, appraisals and management plans that assess and analyse the character and appearance of each of our conservation areas and set out how we consider they can be preserved or enhanced. We will take these into account when assessing planning applications for development in conservation areas. We will seek to manage change in a way that retains the distinctive characters of our conservation areas and will expect new development to contribute positively to this. The Council will therefore only grant planning permission for development in Camden's conservation areas that preserves or enhances the special character or appearance of the area.
- 7.47 The character of conservation areas derive from the combination of a number of factors, including scale, density, pattern of development, landscape, topography, open space, materials, architectural detailing and uses. These elements should be identified and responded to in the design of new development. Design and Access Statements should include an assessment of local context and character and set out how the development has been informed by it and responds to it.
- 7.48 Due to the largely dense urban nature of Camden, the character or appearance of our conservation areas can also be affected by development which is outside of conservation areas, but visible from within them. This includes high or bulky

buildings, which can have an impact on areas some distance away, as well as adjacent premises. The Council will therefore not permit development in locations outside conservation areas that it considers would cause harm to the character, appearance or setting of such an area.

Demolition in conservation areas

- 7.49 The Council has a general presumption in favour of retaining buildings that make a positive contribution to the character or appearance of a conservation area, whether they are listed or not, so as to preserve this character and appearance. The Council will resist the total or substantial demolition of buildings which make a positive contribution to a conservation area unless circumstances are shown that outweigh the case for retention. Applicants will be required to justify the demolition of a building that makes a positive contribution to a conservation area, having regard to the National Planning Policy Framework, Camden's conservation area statements, appraisals and management strategies and any other relevant supplementary guidance produced by the Council.
- 7.50 When considering applications for demolition, the Council will take account of group value, context and the setting of buildings, as well as their quality as individual structures and any contribution to the setting of listed buildings. Applications must clearly show which buildings or parts of buildings are to be demolished.
- 7.51 Applications for total or substantial demolition in conservation areas must demonstrate to the Council's satisfaction that effective measures will be taken during demolition and building works to ensure structural stability of retained parts and adjoining structures. Before planning permission for demolition is granted, the Council must be satisfied that there are acceptable detailed plans for the redevelopment.
- 7.52 In addition proposals for demolition and reconstruction should be justified in terms of the optimisation of resources and energy use in comparison with the existing building. Further details on this are in "Policy CC1 Climate change mitigation".

Use

- 7.53 Changes in patterns of use can also erode the character of an area. It is therefore important that, whenever possible, uses which contribute to the character of a conservation area are not displaced by redevelopment. Two uses of particular importance to the character of conservation areas are pubs and local shops, especially when they are in located in historic buildings. The Council will protect these uses as set out in "Policy C4 Public houses" and "Section 9 Town centres and shops".

Details

- 7.54 The character and appearance of a conservation area can be eroded through the loss of traditional architectural details such as historic windows and doors, characteristic rooftops, garden settings and boundary treatments. Where alterations are proposed they should be undertaken in a material of a similar appearance to the original. Traditional features should be retained or reinstated

where they have been lost, using examples on neighbouring houses and streets to inform the restoration. The Council will consider the introduction of Article 4 Directions to remove permitted development rights for the removal or alterations of traditional details where the character and appearance of a conservation area is considered to be under threat.

Landscape

- 7.55 The value of existing gardens, trees and landscape to the character of the borough is described in “Policy A2 Open space” and they make a particular contribution to conservation areas. Development will not be permitted which causes the loss of trees or garden space where this is important to the character and appearance of a conservation area.

Sustainable design and retrofitting

- 7.56 Historic buildings including those in conservation areas can be sensitively adapted to meet the needs of climate change and energy saving while preserving their special interest and ensuring their long-term survival. In assessing applications for retrofitting sustainability measures to historic buildings the Council will take into consideration the public benefits gained from the improved energy efficiency of these buildings, including reduction of fuel poverty. These considerations will be weighed up against the degree to which proposals will change the appearance of the building, taking into consideration the scale of harm to appearance and the significance of the building. Applicants are encouraged to follow the detailed advice in Camden’s Retrofitting Planning Guidance, the energy efficiency planning guidance for conservation areas and the Historic England website.

Listed buildings

- 7.57 Camden’s listed buildings and structures provide a rich and unique historic and architectural legacy. They make an important and valued contribution to the appearance of the borough and provide places to live and work in, well known visitor attractions and cherished local landmarks. We have a duty to preserve and maintain these for present and future generations.
- 7.58 The Council has a general presumption in favour of the preservation of listed buildings. Total demolition, substantial demolition and rebuilding behind the façade of a listed building will not normally be considered acceptable. The matters which will be taken into consideration in an application for the total or substantial demolition of a listed building are those set out in the National Planning Policy Framework.
- 7.59 In order to protect listed buildings, the Council will control external and internal works that affect their special architectural or historic interest. Consent is required for any alterations, including some repairs, which would affect the special interest of a listed building.
- 7.60 The setting of a listed building is of great importance and should not be harmed by unsympathetic neighbouring development. While the setting of a listed building may be limited to its immediate surroundings, it can often extend some distance from it. The value of a listed building can be greatly diminished if

unsympathetic development elsewhere harms its appearance or its harmonious relationship with its surroundings. Applicants will be expected to provide sufficient information about the proposed development and its relationship with its immediate setting, in the form of a design statement.

Access in listed buildings

- 7.61 Where listed buildings and their approaches are being altered, disabled access should be considered and incorporated. The Council will balance the requirement for access with the interests of conservation and preservation to achieve an accessible solution. We will expect design approaches to be fully informed by an audit of conservation constraints and access needs and to have considered all available options. The listed nature of a building does not preclude the development of inclusive design solutions and the Council expects sensitivity and creativity to be employed in achieving solutions that meet the needs of accessibility and conservation.

Sustainability measures in listed buildings

- 7.62 Proposals that reduce the energy consumption of listed buildings will be welcomed provided that they do not cause harm to the special architectural and historic interest of the building or group. Energy use can be reduced by means that do not harm the fabric or appearance of the building, for instance roof insulation, draught proofing, secondary glazing, more efficient boilers and heating and lighting systems and use of green energy sources. Depending on the form of the building, renewable energy technologies may also be installed, for instance solar water heating and photovoltaics.

Archaeology

- 7.63 Camden has a rich archaeological heritage which comprises of both above and below ground remains, in the form of individual finds, evidence of former settlements and standing structures. These remains are vulnerable to modern development and land use. There are currently 13 archaeological priority areas in the borough (see “Map 4: Heritage and Archaeological Sites”) although these are scheduled for review in 2017.
- 7.64 The archaeological priority areas provide a general guide to areas of archaeological remains, but do not indicate every find site in the borough. These are based on current knowledge and may be refined or altered as a result of future archaeological research or discoveries.
- 7.65 It is likely that archaeological remains will be found throughout the borough, both within and outside the archaeological priority areas. Many archaeological remains have yet to be discovered, so their extent and significance is not known. When researching the development potential of a site, developers should, in all cases, assess whether the site is known or is likely to contain archaeological remains. Where there is good reason to believe that there are remains of archaeological importance on a site, the Council will consider directing applicants to supply further details of proposed developments, including the results of archaeological desk-based assessment and field evaluation. Scheduled monument consent must be obtained before any alterations are made to scheduled ancient monuments. Camden has only one

scheduled ancient monument: Boadicea's Grave in Hampstead Heath.

- 7.66 If important archaeological remains are found, the Council will seek to resist development which adversely affects remains and to minimise the impact of development schemes by requiring either in situ preservation or a programme of excavation, recording, publication and archiving of remains. There will usually be a presumption in favour of in situ preservation of remains and, if important archaeological remains are found, measures should be adopted to allow the remains to be permanently preserved in situ. Where in situ preservation is not feasible, no development shall take place until satisfactory excavation and recording of the remains has been carried out on site and subsequent analysis, publication and archiving undertaken by an archaeological organisation approved by the Council.
- 7.67 The Council will consult with, and be guided by, Historic England and the Greater London Archaeology Advisory Service (GLAAS) on the archaeological implications of development proposals. The Greater London Historic Environment Record, maintained by Historic England, contains further information on archaeological sites in Camden. When considering schemes involving archaeological remains, the Council will also have regard to the National Planning Policy Framework.

Other heritage assets

- 7.68 In addition to conservation areas, listed buildings and archaeological remains, Camden contains 14 registered parks and gardens, as identified by Historic England. There are also 53 London squares in the borough protected by the London Squares Preservation Act 1931. The Council will encourage the management of registered parks and gardens and London squares to maintain, and where appropriate, enhance their value and protect their setting. The Council will consult with Historic England over proposals affecting these parks and gardens. We also encourage the restoration and management of registered parks and gardens and London squares to enhance their value.

Non designated heritage assets

- 7.69 The borough also has many attractive, historic, locally significant buildings and features which contribute to the distinctiveness of local areas, but which are not formally designated. The National Planning Policy Framework identifies these features as non-designated heritage assets. Non-designated heritage assets may either be identified as part of the planning process or on Camden's Local List. Camden's Local List identifies historic buildings and features that are valued by the local community and that help give Camden its distinctive identity but are not already designated in another way (for example a listed building). When planning permission is required for any proposal that directly or indirectly affects the significance of a non-designated heritage asset (either on the Local List or not) then the Council will treat the significance of that asset as a material consideration when determining the application. The Local List is available at www.camden.gov.uk/locallist.

Shopfronts

- 7.70 Shopfronts contribute greatly to the character of centres and their distinctiveness. Most of Camden's town and neighbourhood centres date back to the 19th Century and earlier, having developed from commercial activities that first took place within dwellings, although there are some significant 20th Century shopping parades.
- 7.71 Please refer to "Policy TC2 Camden's centres and other shopping areas" for policy on the design of new retail spaces.

Policy D3 Shopfronts

The Council will expect a high standard of design in new and altered shopfronts, canopies, blinds, security measures and other features.

When determining proposals for shopfront development the Council will consider:

- a. the design of the shopfront or feature, including its details and materials;
- b. the existing character, architectural and historic merit and design of the building and its shopfront;
- c. the relationship between the shopfront and the upper floors of the building and surrounding properties, including the relationship between the shopfront and any forecourt or lightwell;
- d. the general characteristics of shopfronts in the area;
- e. community safety and the contribution made by shopfronts to natural surveillance; and
- f. the degree of accessibility.

The Council will resist the removal of shop windows without a suitable replacement and will ensure that where shop, service, food, drink and entertainment uses are lost, a shop window and visual display is maintained.

Where an original shopfront of architectural or historic value survives, in whole or in substantial part, there will be a presumption in favour of its retention. Where a new shopfront forms part of a group where original shop fronts survive, its design should complement their quality and character.

Protecting existing shopfronts

- 7.72 Shopfronts form an essential part of the character and attractiveness of many areas in Camden, in particular its centres, and contribute to the creation of vibrant streets and public spaces. We will seek to protect existing shopfronts that make a significant contribution to the appearance and character of an area, for example through their architectural and historic merit. We will consider the need to keep the appearance of the shopfront, taking into account the quality of its design, its historic importance and its location. Good examples of shopfronts should be retained wherever possible.