



 1/7



COMMERCIAL

Canfield Place, Swiss Cottage, London, NW6

£2,000 pcm

£24,000 pa

MARKETED BY

Upad, Coventry

2 Park House, Coventry, CV1 2FL



Call agent: 03301 011911

[Request details](#)

Letting details

Let available date: **Now**

Deposit: **£6,000**

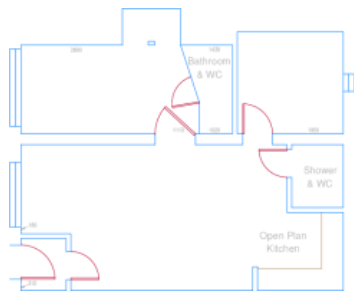
Let type: **Long term**

PROPERTY TYPE

 **Office**

SIZE

 **600 sq. ft.**
(56 sq. m.)



Key features

- Rent directly from Landlord
- No Fees
- Great Location, 1 minute walk from Finchley Road U

Property description

Property reference number **5730377**. To enquire about this property click the "Request Details" button

Self-Contained, Partly Fitted, Refurbished, Ground Floor Office Suite To Let

LOCATION

The property is located in a quiet Mews, situated immediately behind Finchley Road Underground Station (Jubilee and Metropolitan Line), providing rapid rail access to the West End and City. In addition, the property is well served by a number of bus routes which pass along Finchley Road and is within a few minutes' walk of the O2 Centre with its many restaurants, shopping, cinema and fitness facilities.

DESCRIPTION

The property is a self-contained ground floor office, with its own independent entrance from the street, comprising of a net internal floor area of 600 sq. ft. The offices have been redecorated and are divided to provide a large open plan area, together with two Directors offices/ meeting rooms, one of which is equipped with a private WC and shower. There is also a WC and shower in the main open plan area which also benefits from a fully fitted kitchenette.

SPECIFICATIONS

Substantially redecorated
 Central heating
 Kitchenette
 Private street entrance
 Spot lighting
 Wood flooring
 Independent WC's and shower facilities

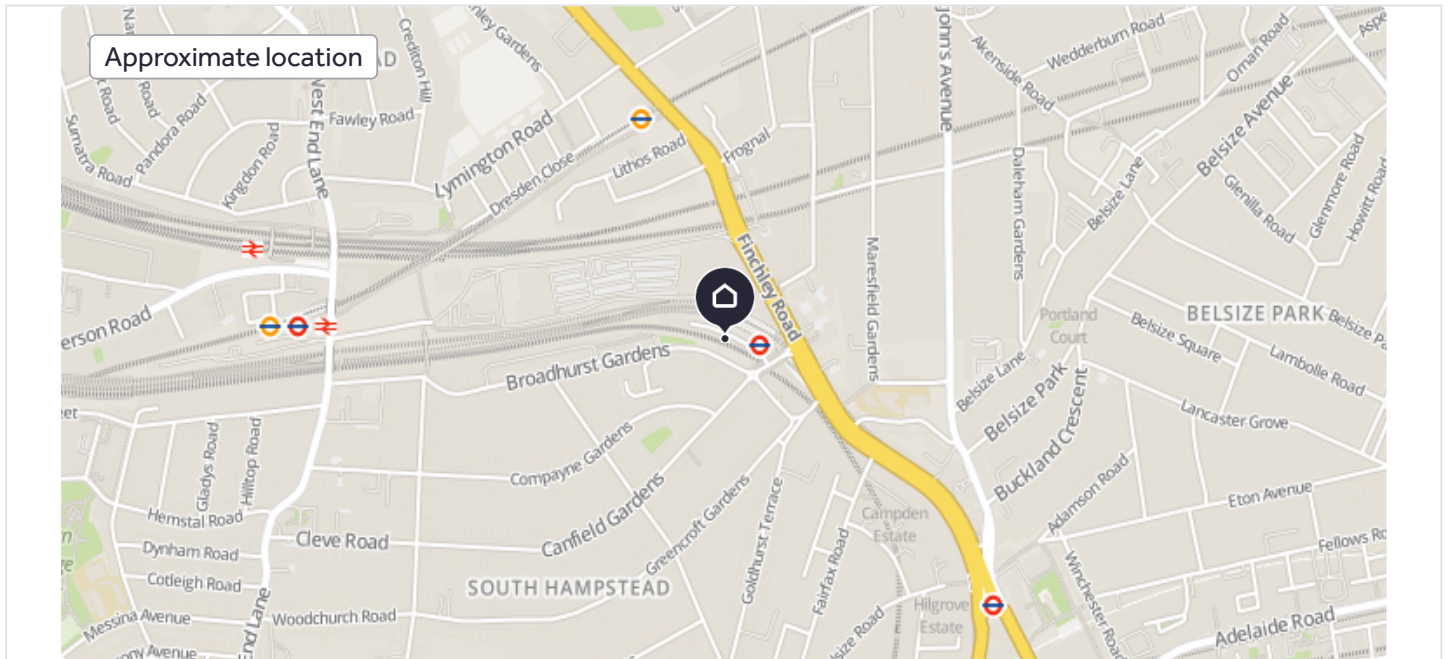
* Please quote ref. **5730377** when enquiring about this property.

Phone lines open
 Monday - Friday 9am to 6pm

Brochures

[Upad tenant guide](#)

Canfield Place, Swiss Cottage, London, NW6



About the agent

Upad, Coventry

2 Park House, Coventry, CV1 2FL



Upad began in 2007 and has grown into the UK's largest online lettings agency by offering a simpler, more cost-effective way to find tenants and let a property. This has proved equally popular among landlords who previously used a high street letting agent to find tenants as well as those who used classified channels. Last year, we helped rent over 10,000 properties; our biggest year so far.

[More properties from this agent](#)

Notes

 These notes are private, only you can see them.



Add your thoughts on this property...

Disclaimer - Property reference 5730377_70566. The information displayed about this property comprises a property advertisement. Rightmove.co.uk makes no warranty as to the accuracy or completeness of the advertisement or any linked or associated information, and Rightmove has no control over the content. This property advertisement does not constitute property particulars. The information is provided and maintained by **Upad, Coventry**. Please contact the selling agent or developer directly to obtain any information which may be available under the terms of The Energy Performance of Buildings (Certificates and Inspections) (England and Wales) Regulations 2007 or the Home Report if in relation to a residential property in Scotland.

Map data © [OpenStreetMap](#) contributors.