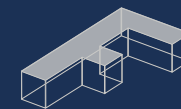


FINELINE BIFOLD DOOR



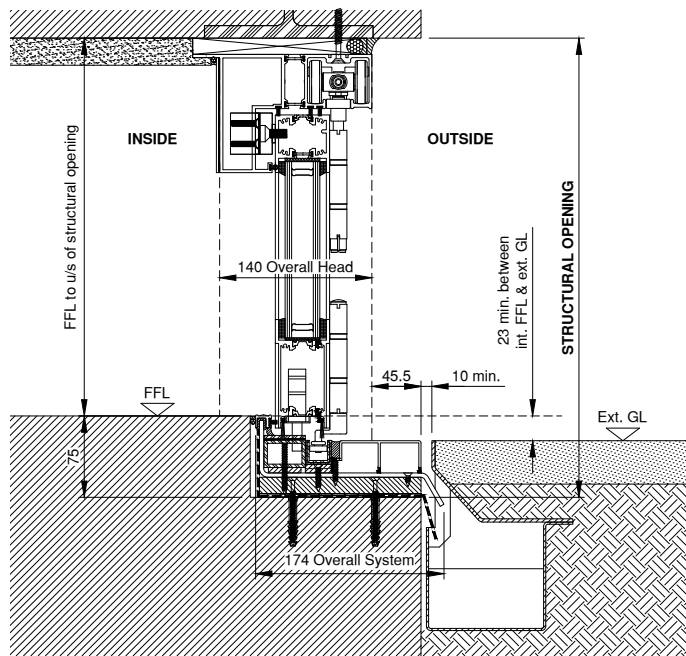
FINELINE

THE ARCHITECTS' CHOICE

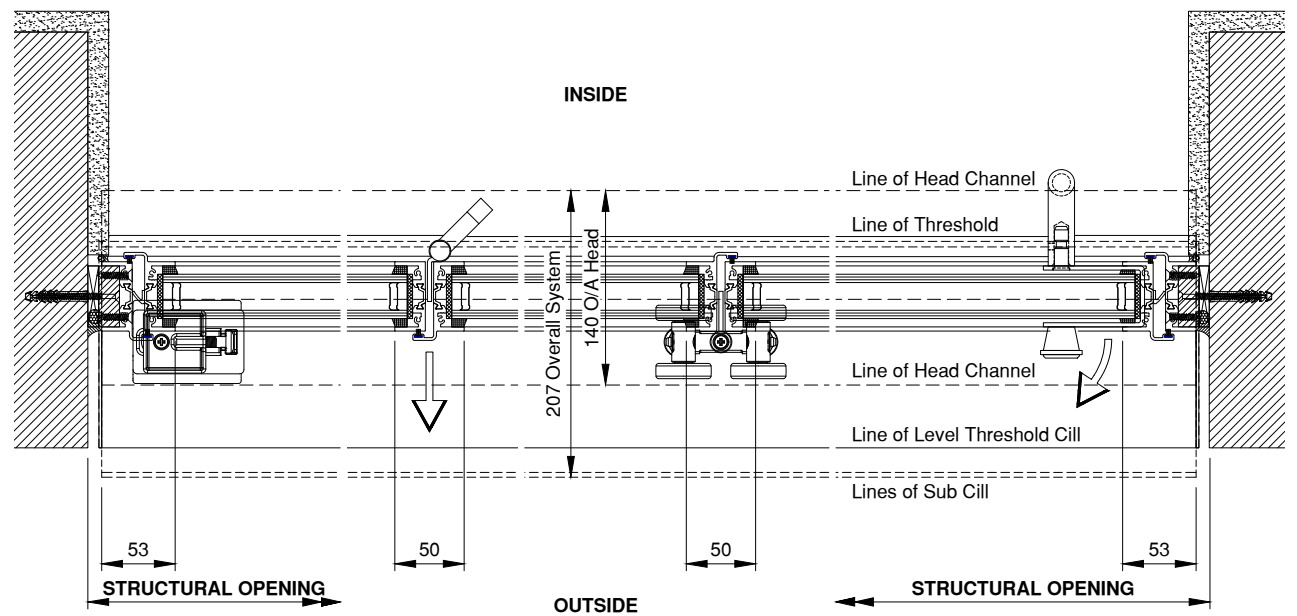


FINELINE BIFOLD DOOR SPECIFICATION

BIFOLD DOOR VERTICAL SECTION



BIFOLD DOOR HORIZONTAL SECTION



INNOVATION AND USPs

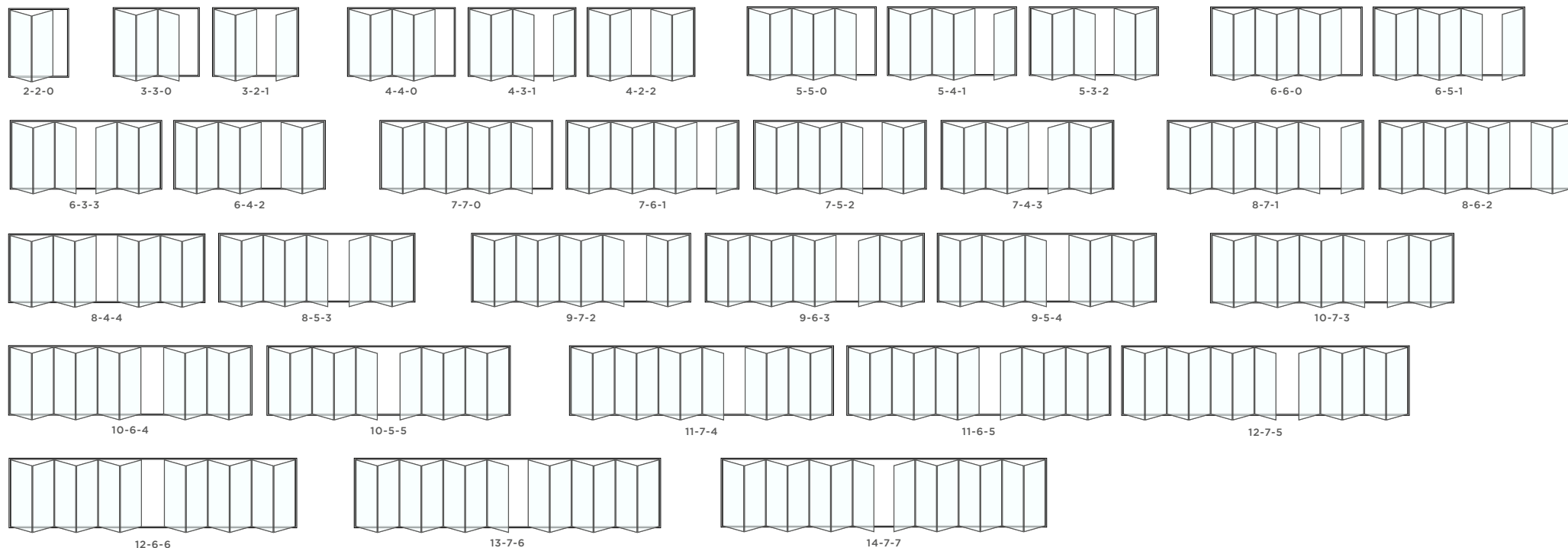
- The slimmest frame bifold door on the market
- 50mm visible width at vent/vent section
- Designed and manufactured by us in the UK
- Whole door U-values as low as 1.4W/m²K
- Fully thermally-broken
- Magnetic lock in head rail is concealed
- Up to 14 door leaves in one opening
- Low threshold
- Integrates with leading drainage systems
- Premium quality stainless steel rollers
- Smooth and reliable operation
- Rebated frame for added weather resistance
- Choice of handles

SPECIFICATION

- Premium quality stainless steel rollers for smooth and reliable operation
- Aluminium alloy specification 6060/6063 T6 complying with BS EN 755-9:2001
- Aluminium profiles manufactured to BS EN 150 9001/9002
- System fabricated to BS 4873
- Hermetically sealed double glazed units to BS 6262, BS EN 12600 and BS 5713
- Structurally calculated sealed units to Dow Corning 895
- Glass & frame designed to withstand wind loading in accordance with BS 63099 pt2:1995
- All glass toughened to BS EN 12150 where appropriate

CONFIGURATIONS

- Up to 14 door leaves
- Up to 7 doors in each direction
- Bespoke designs available
- Complementary fixed panels
- Complementary frameless glass corner solution



OPTIONS

- Toughened glass as standard
- Soft coat low E glass as standard
- Argon gas as standard
- Solar control glass optional
- Heat soak tested glass optional
- Low iron glass optional
- Laminated glass optional
- Choice of handles
- Wide choice of colours and finishes
- Marine grade coatings available
- Comprehensive range of other glass options

SECURITY

- Concealed electro-magnetic lock
- Key-lockable master door leaf
- Toughened glass as standard
- Locking at bottom rail
- Locking at head
- Option to lock inside and out

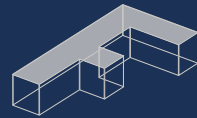
SIZES AND WEIGHTS

Maximum panel width	1100mm
Maximum height	2700mm
Maximum panel weight	100kg
Up to 7 doors in each direction	
Maximum opening width over 15m	

THERMAL PERFORMANCE

Fully thermally-broken system
 Whole door U-values as low as 1.4W/m²K
 Centre pane U-value as low as 1.0W/m²K
 Uf value 3.0W/m²K





FINELINE

THE ARCHITECTS' CHOICE

Call us: 01934 429 922

Email: enquiries@finelinealuminium.co.uk

www.finelinealuminium.co.uk