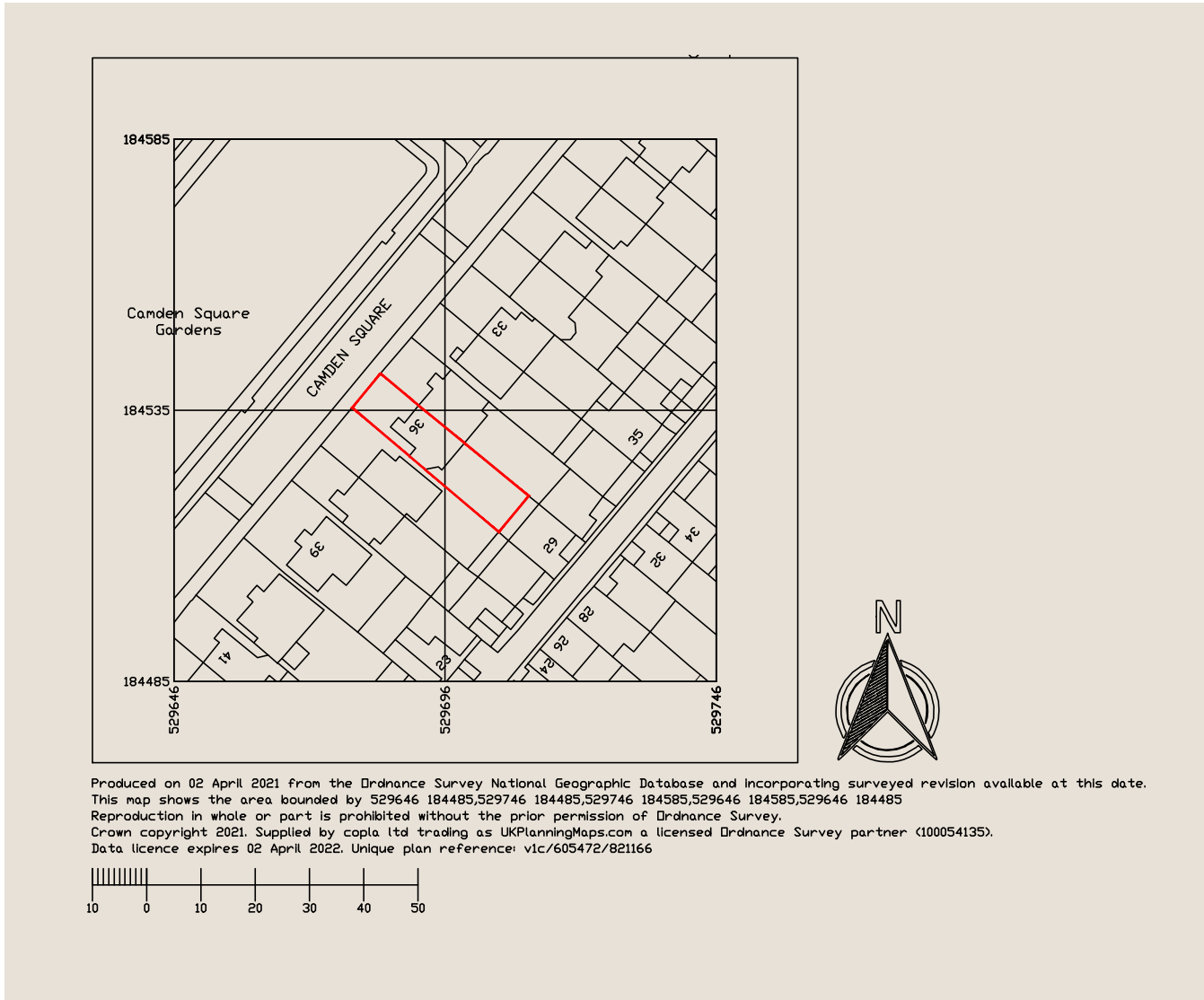


**36 Camden Square
NW1 9XA**

*Design and Access Statement
Upgrade and integration*



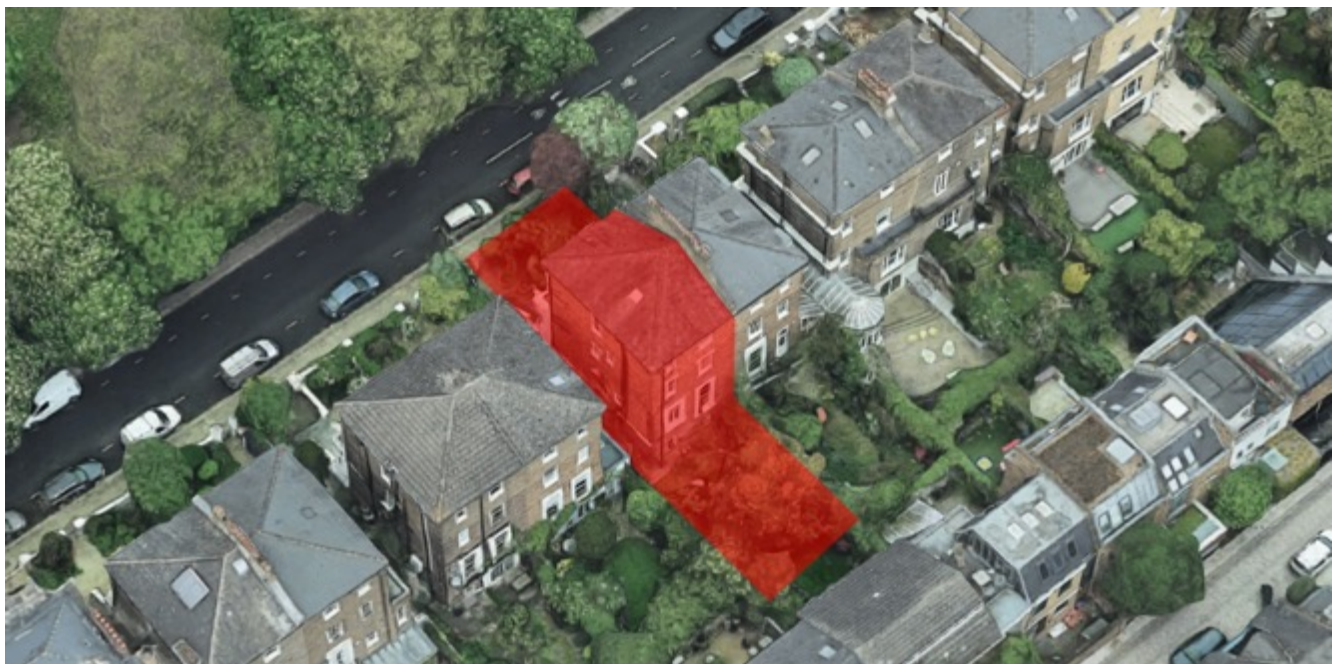
This document updates and integrates the previous Design and Access Statement. It has to be read along with the updated drawings that amend the planning submission for 36 Camden Square.

The side extension design has been renewed to balance the neighbouring building and to merge organically within the architectural language of the south-East side of Camden Square.

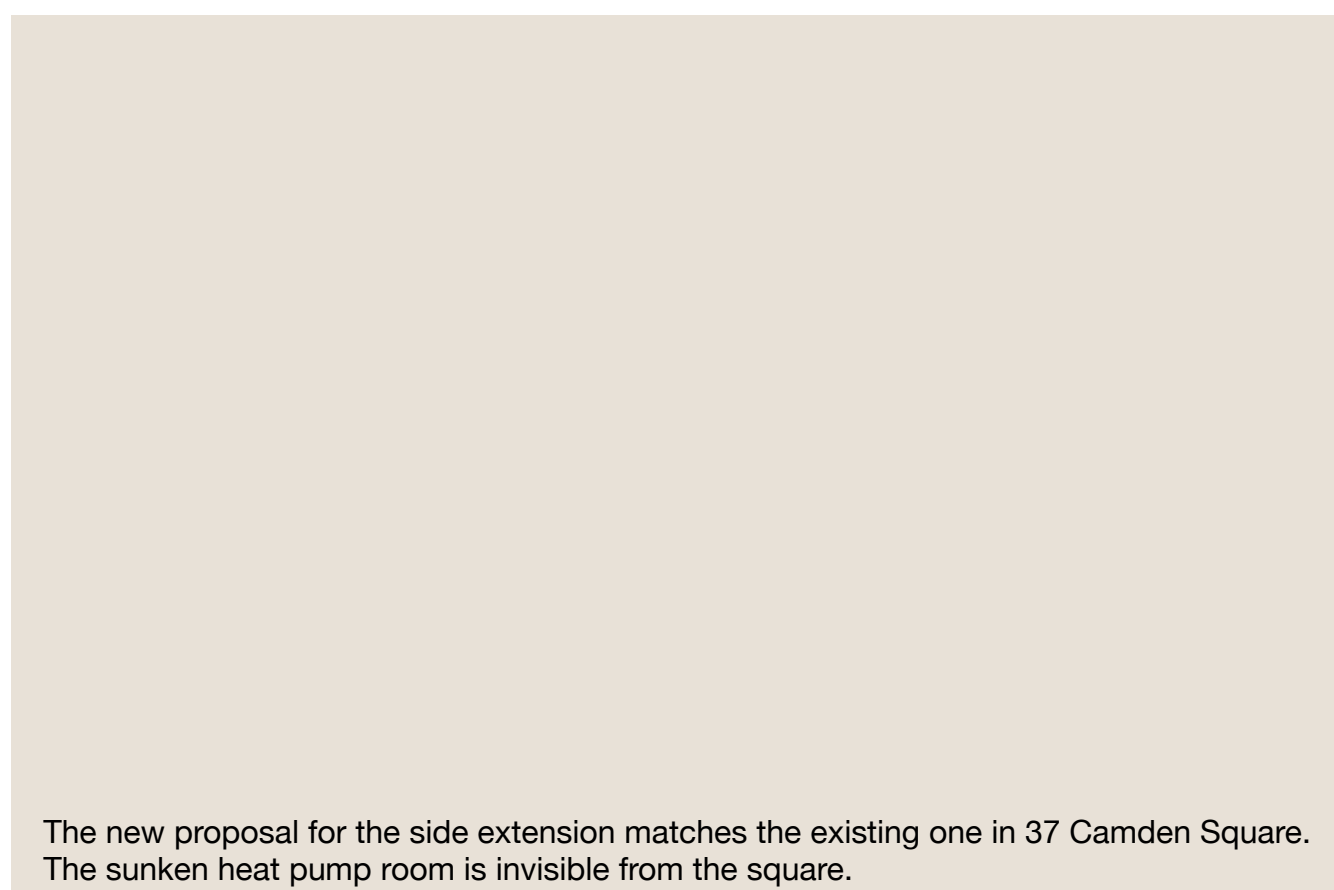
The new extension now coincides in depth and height with the existing one on the side, acting as its counterpart.

The second design update regards the relocation of the heat pump in the front garden. The service room will be sunk against the North-West retaining wall, and it will be covered by a green roof and wholly concealed from the square.

The room will be entirely soundproofed, not creating any nuisance for the neighbour.

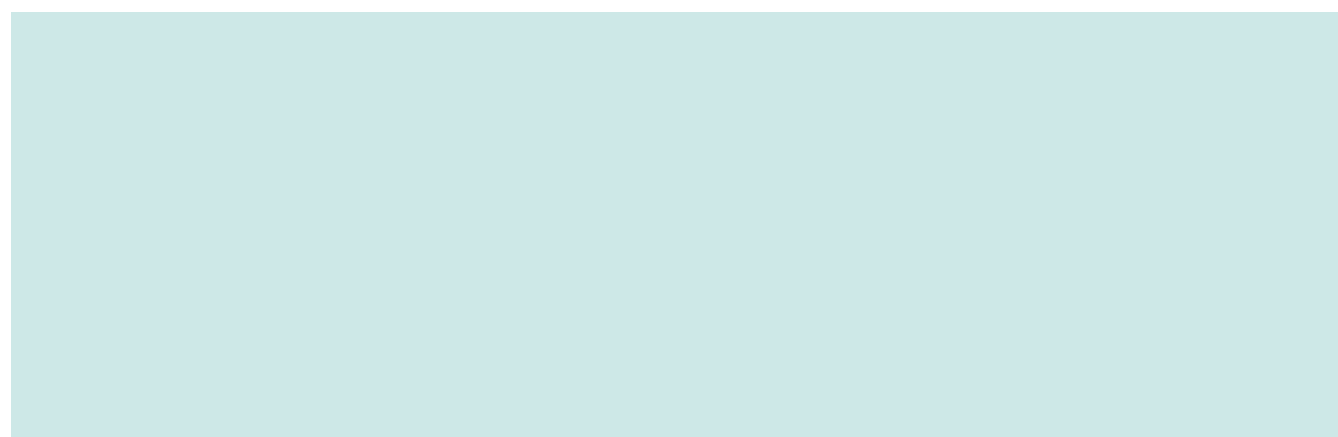






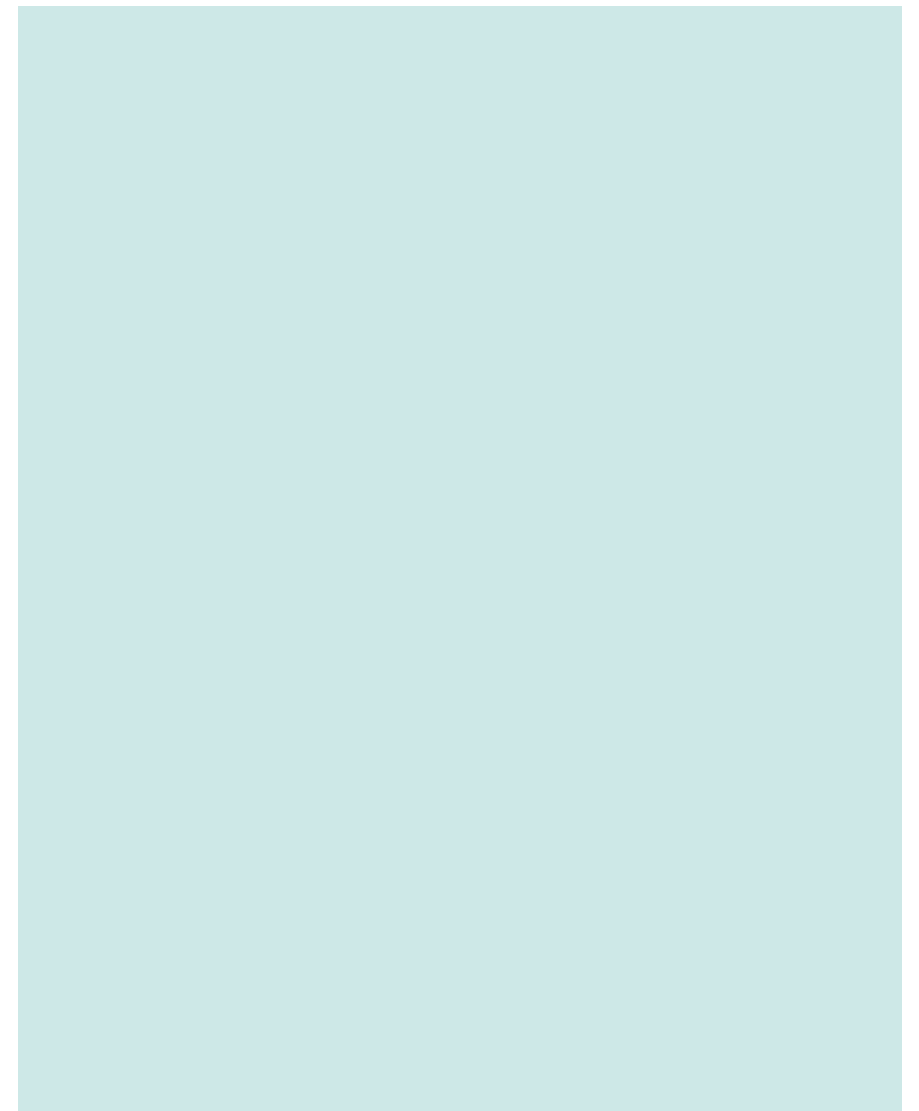
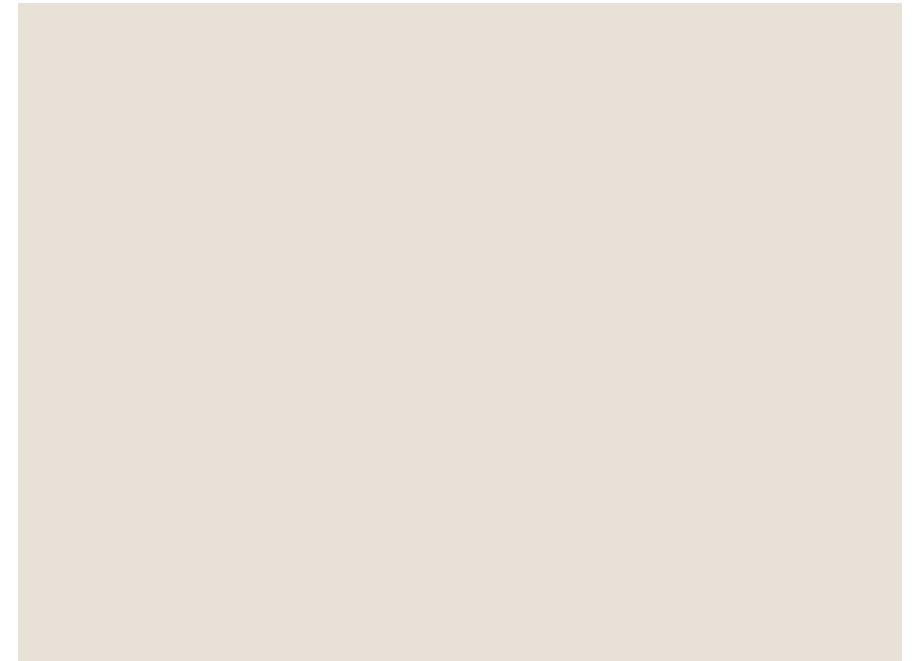
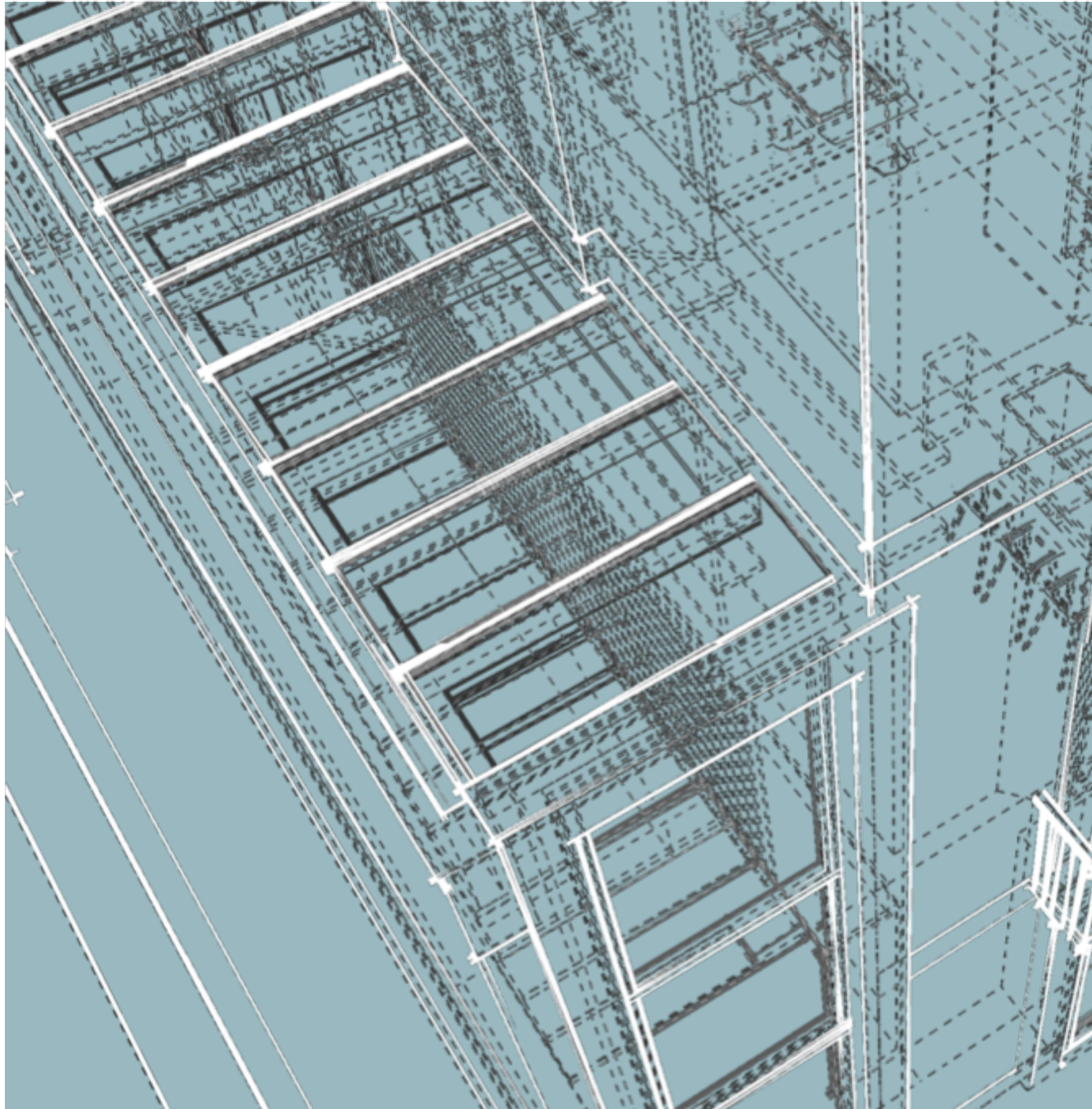
The new proposal for the side extension matches the existing one in 37 Camden Square. The sunken heat pump room is invisible from the square.





36 Camden Square NW1 9XA

Views from the square



36 Camden Square NW1 9XA