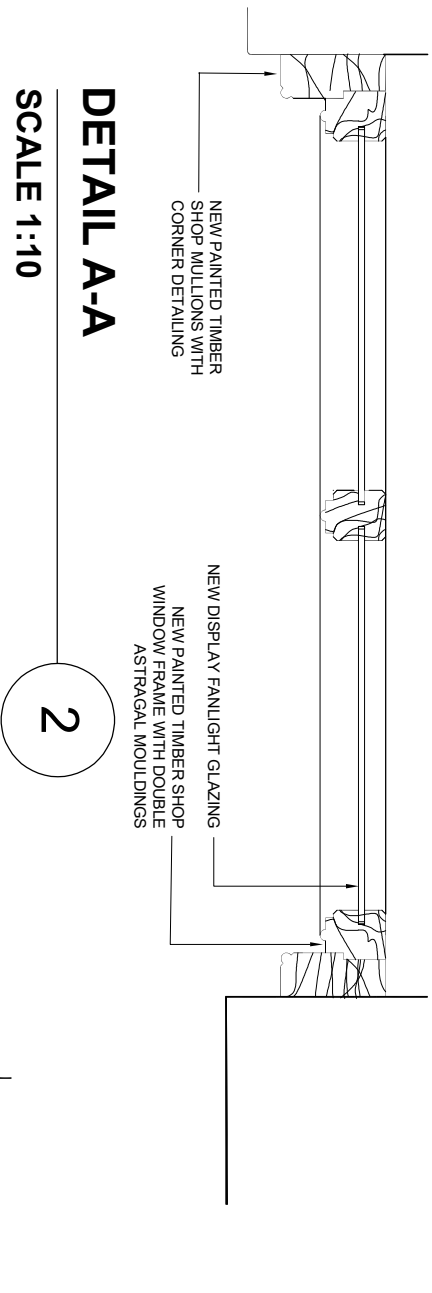
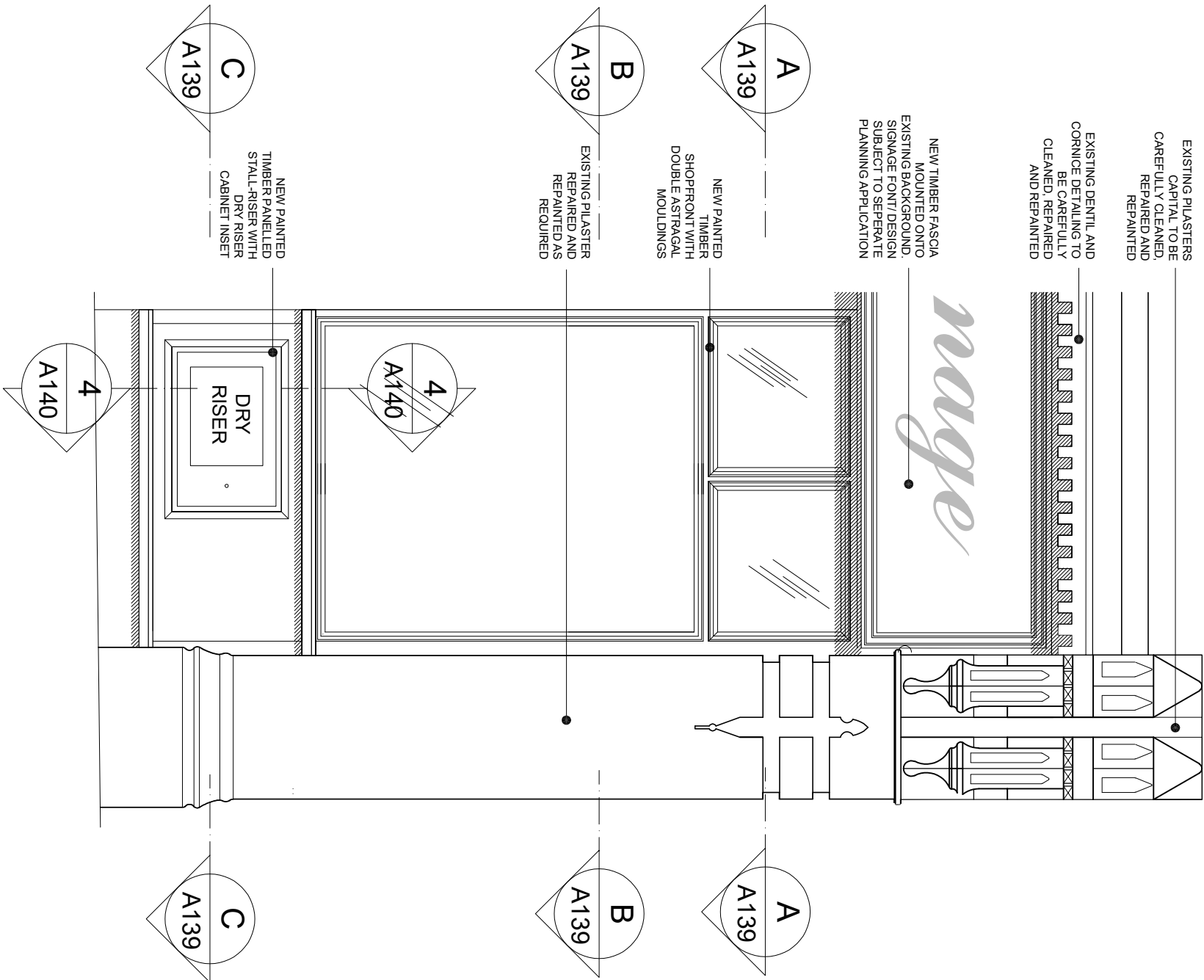
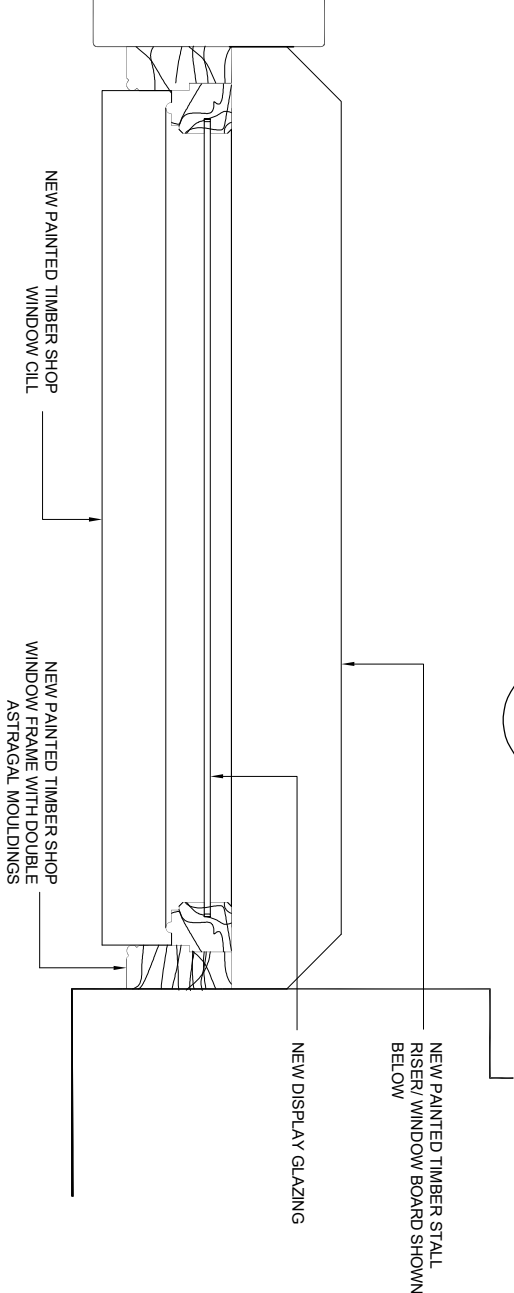


PLANNING REF 2016/6366/P CONDITION 4b - SHOPFRONT DETAILS



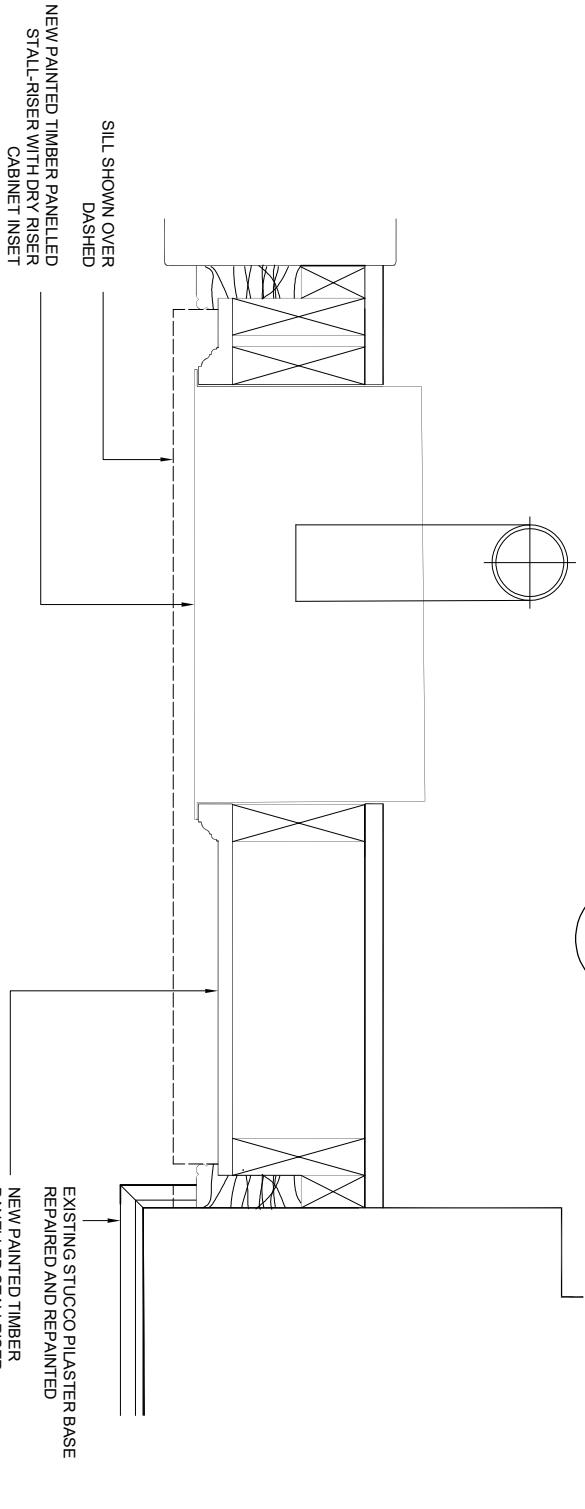
DETAIL A-A

SCALE 1:10



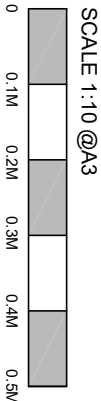
DETAIL B-B

SCALE 1:10



DETAIL C-C

SCALE 1:10



PART ELEVATION D

SCALE 1:20

1

CLIENT: WHITE LION ESTATES LTD.		PROJECT : 72-80 LEATHER LANE LONDON, EC1N 7TR		1. DO NOT SCALE THIS DRAWING 2. ALL DIMENSIONS ARE TO BE VERIFIED ON SITE BY THE CONTRACTOR AND REPORTED TO THE ARCHITECT BEFORE CONSTRUCTION 3. ANY DISCREPANCY FOUND BETWEEN THIS DRAWING AND ANY OTHER DOCUMENT MUST BE REPORTED IMMEDIATELY TO THE ARCHITECT 4. REMOVE THIS DRAWING FROM CURRENCY WHEN A REVISED DRAWING IS ISSUED 5. COPYRIGHT OF THIS DRAWING REMAINS WITH HODGES ARCHITECTS LTD
DRAWN BY : NH		CHECKED BY : SH		NO DATE REVISION
				DRAWING TITLE:
				CONDITION 4b SHOPFRONT DETAILS DETAIL SHEET 4
				SCALE: AS NOTED PROJ. NO: 011
				DATE: 20.01.22
				REV.:
				A3
				HODGES ARCHITECTS LTD
				TEL: 07932 376 008 EMAIL: nh@hodgesarchitects.co.uk