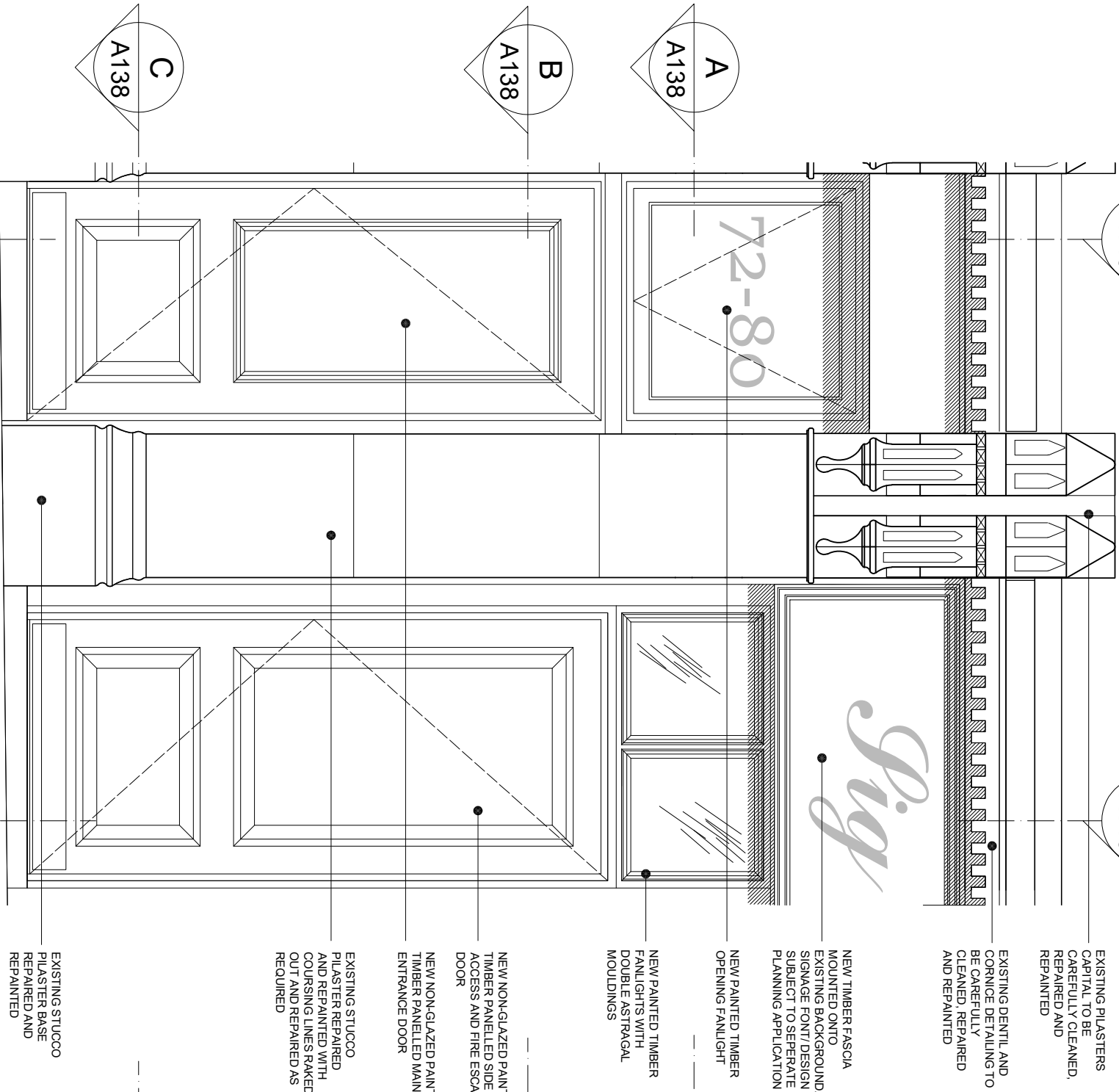


PLANNING REF 2016/6366/P CONDITION 4b - SHOPFRONT DETAILS



EXISTING PILASTERS
CAPITAL TO BE
CAREFULLY CLEANED,
REPAIRED AND
REPAIRED

EXISTING DENTIL AND
CORNICE DETAILING TO
BE CAREFULLY
CLEANED, REPAIRED
AND REPAIRED

NEW TIMBER FASCIA
MOUNTED ONTO
EXISTING BACKGROUND
SIGNAGE FONT/DESIGN
SUBJECT TO SEPERATE
PLANNING APPLICATION

NEW PAINTED TIMBER
OPENING FANLIGHT

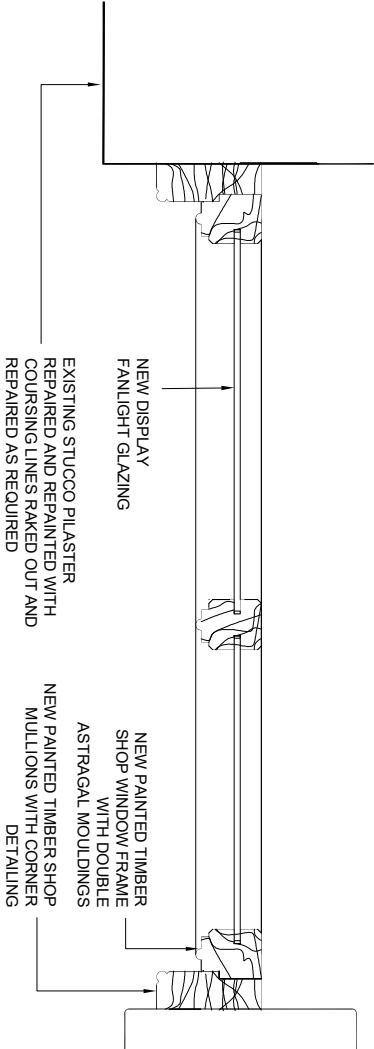
NEW PAINTED TIMBER
FANLIGHTS WITH
DOUBLE ASTRAGAL
MOULDINGS

NEW NON-GLAZED PAINTED
TIMBER PANELLED SIDE
ACCESS AND FIRE ESCAPE
DOOR

NEW NON-GLAZED PAINTED
TIMBER PANELLED MAIN
ENTRANCE DOOR

EXISTING STUCCO
PILASTER REPAIRED
AND REPAIRED WITH
COURSING LINES RAKED
OUT AND REPAIRED AS
REQUIRED

EXISTING STUCCO
PILASTER BASE
REPAIRED AND
REPAIRED

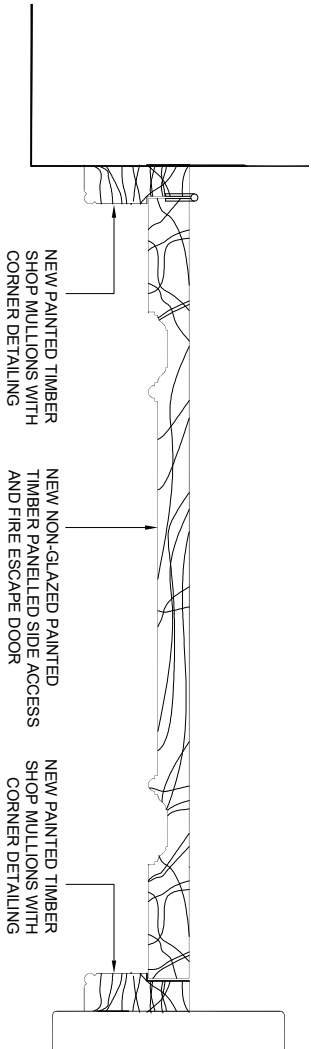


NEW DISPLAY
FANLIGHT GLAZING

EXISTING STUCCO PILASTER
REPAIRED AND REPAIRED WITH
COURSING LINES RAKED OUT AND
REPAIRED AS REQUIRED

NEW PAINTED TIMBER
SHOP WINDOW FRAME
WITH DOUBLE
ASTRAGAL MOULDINGS

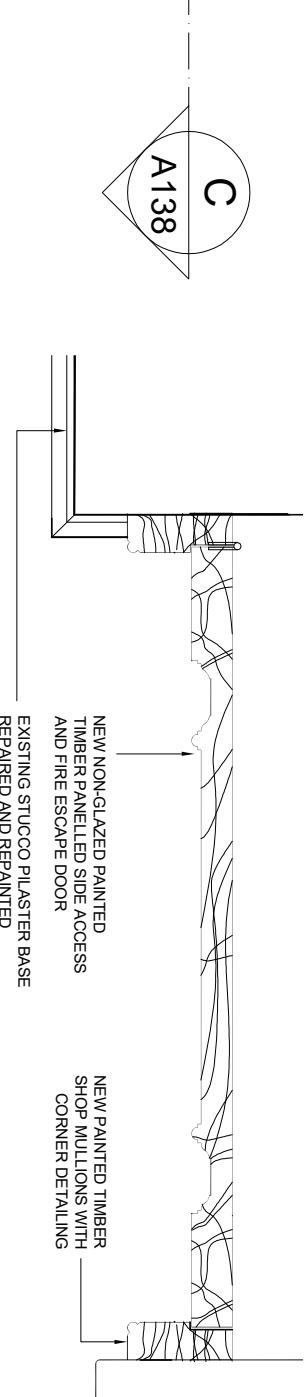
NEW PAINTED TIMBER SHOP
MULLIONS WITH CORNER
DETAILING



NEW PAINTED TIMBER
SHOP MULLIONS WITH
CORNER DETAILING

NEW NON-GLAZED PAINTED
TIMBER PANELLED SIDE ACCESS
AND FIRE ESCAPE DOOR

NEW PAINTED TIMBER
SHOP MULLIONS WITH
CORNER DETAILING



NEW NON-GLAZED PAINTED
TIMBER PANELLED SIDE ACCESS
AND FIRE ESCAPE DOOR

EXISTING STUCCO PILASTER BASE
REPAIRED AND REPAIRED

NEW PAINTED TIMBER
SHOP MULLIONS WITH
CORNER DETAILING

PART ELEVATION C

SCALE 1:20

3
A140

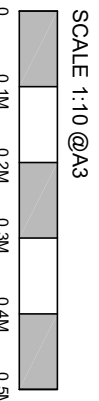
1

2
A140

DETAIL C-C

SCALE 1:10

4



DETAIL B-B

SCALE 1:10

3

DETAIL A-A

SCALE 1:10

2

CLIENT:

WHITE LION
ESTATES LTD.

PROJECT :

72-80 LEATHER LANE
LONDON, EC1N 7TR

DRAWN BY : NH

CHECKED BY : SH

- DO NOT SCALE THIS DRAWING
- ALL DIMENSIONS ARE TO BE VERIFIED ON SITE BY THE CONTRACTOR AND REPORTED TO THE ARCHITECT BEFORE CONSTRUCTION
- ANY DISCREPANCY FOUND BETWEEN THIS DRAWING AND ANY OTHER DOCUMENT MUST BE REPORTED IMMEDIATELY TO THE ARCHITECT
- REMOVE THIS DRAWING FROM CURRENCY WHEN A REVISED DRAWING IS ISSUED
- COPYRIGHT OF THIS DRAWING REMAINS WITH HODGES ARCHITECTS LTD

NO DATE REVISION

DRAWING TITLE:

CONDITION 4b
SHOPFRONT DETAILS
DETAIL SHEET 3

SCALE: AS NOTED DATE: 20.01.22

PROJ. NO: 011 DWG NO: A138

REV.:

A3

HA
HODGES ARCHITECTS LTD

TEL: 07932 376 008
EMAIL: nh@hodgesarchitects.co.uk